



Department
Of Correction

Arkansas Recidivism Study

Tiffanye Compton, Research and Planning Administrator
Brenda K Wilson, Administrative Analyst

2011

1. Overall Recidivism rate increased from 40.3% in 2007 to 44.9% in CY2008, a variance of 4.6 percentage points. This is due largely to the limit placed on how many times a TPV may be housed at the Omega Technical Violator Center (Table 1, pg 2).
2. At a three-year post release, 2008 recidivism rates increased from 7.5% the first six months to 44.9% in three years, a 37.4% overall increase (Table 1, pg. 2).
3. Recidivism rate, at 45.6% over three years for paroled inmates, was significantly higher in 2008 than that of discharged inmates at 15.9% (Table 2, pg. 3).
4. For 2008, Parole and Discharge return rates increased significantly throughout the three-year post return (Table 2, pg. 3).
5. Parole Violators with New Sentences, within a three-year post release, accounted for 61% of the recidivists and Parole Violators with Technical Violations accounted for 33%, while Discharges with New Sentences only accounted for 6%.
6. 2008 Recidivism rates for male offenders show a three-year post release return rate of 47% as compared to a return rate of 28.7% for females (Table 4, pg. 6).
7. An overall three-year post release for 2008 demonstrates that 47.4% of blacks and 44.6% of whites returned to prison. The recidivism rates for blacks and whites increased by 2.9 points and 6.6 points respectively from the previous year (Table 5, pg. 9).
8. For 2008 releases within a three-year post release and a return to prison, inmates within the age range of 25-34 for both males and females demonstrated the highest total return rates, with ages 35-44 coming in second (Table 6, pg. 10).

Public Services Division, Research and Planning, Arkansas Department of Correction
P.O. Box 8707, Pine Bluff, AR 71602, Telephone (870) 267-6335
Ray Hobbs, Director Dina Tyler, Asst. Director

Arkansas' Recidivism Study (Addendum)

The **2008** recidivism research is an addendum to the original **1997-1999** study produced in **2003** and to the addendums through **2007**, produced in prior years. This addendum was prepared by the Arkansas Department of Correction's Research and Planning Division. The addendum reviews the return rates of inmates released from custody in **2008**, as compared to prior years. The data for this research was obtained from the ADC electronic Offender Management Information System (eOMIS). If an individual was released **January 1, 2008**, through **December 31, 2008**, the data provided reflects returns for a full three-year post release. All charts and tables reflect a three-year post release review and are utilized strictly for clarity and ease to the reader.

The study is categorized into return rates of six months, one year, and three years, respectively. As with the **2007** addendum regarding a three-year post release of inmates produced in **2010**, the ADC Research and Planning Section will continue to study, track and update trends in release/return rates annually.

Overall Recidivism Rates

As demonstrated, Table 1 shows the overall ADC **2008** recidivism rates. The post-release period consists of six months, one year, and three years, from **1997** through **2008**. In **2008**, there were a total of **6,305** inmates released from ADC (refer to Table 1, year 2008). Within six months of release, **7.5%** returned to prison. Within one year of release, **20.2%** returned and within three years there was an overall rate of **44.9%** returned to prison. ADC has experienced a **46.1%** average return rate for inmates released from prison over the ten years studied.

**In all tables, the "number of releases" is the number of unduplicated releases in a given year used to generate recidivism rates. Table 1 does not specify the type of return. It demonstrates an overall return rate, regardless of reason.*

Table 1

Overall Recidivism Rates								
Release Year	Total Releases	% Returned 6 Months	# Returned 6 Months	% Returned 1 Year	# Returned 1 Year	% Returned 3 Years	# Returned 3 Years	Total % Returns
1999	5,330	15.6%	832	30.6%	1,629	51.4%	2,738	51.4%
2000	5,872	14.2%	834	29.0%	1,701	51.8%	3,040	51.8%
2001	5,962	15.9%	948	29.7%	1,771	51.4%	3,066	51.4%
2002	6,015	15.1%	911	28.5%	1,716	49.4%	2,969	49.4%
2003	6,135	12.9%	792	25.9%	1,586	47.4%	2,905	47.4%
2004	6,244	11.2%	698	22.1%	1,377	44.4%	2,772	44.4%
2005	5,657	7.4%	418	18.3%	1,036	41.4%	2,344	41.4%
2006	5,505	6.4%	355	17.1%	943	37.4%	2,060	37.4%
2007	5,783	6.2%	359	15.2%	881	40.3%	2,330	40.3%
2008	6,305	7.5%	475	20.2%	1,275	44.9%	2,831	44.9%
Averages	5,881	11.7%	662	24.0%	1,392	46.1%	2,706	46.1%

Recidivism Rates: Release Type

Table 2 demonstrates recidivism rate by type of release. ADC releases inmates by parole with supervision, which is granted by the Parole Board, or by discharge (max flat of sentence). In **2008**, there were **6,160** inmates released by regular parole and **145** inmates discharged. Results indicate that within six months of release in **2008**, **469** or **7.6%** of inmates released on parole had returned, while only **6** or **4.1%** of inmates discharged returned with a new sentence. Total returns of parole releases from ADC in **2008** show a **45.6%** return rate, while discharges reflect a **15.9%** return rate.

Table 2

Recidivism Rates By Type of Release								
Year	Type of Release	Total Releases	6 Mths Returns	% Returns	1 Year Returns	% Returns	3 Years Returns	% Returns
1999	Paroled - Regular	4,677	803	17.2%	1,557	33.3%	2,553	54.6%
	Discharge	643	28	4.4%	71	11.0%	184	28.6%
2000	Paroled - Regular	5,691	832	14.6%	1,691	29.7%	3,005	52.8%
	Discharge	181	2	1.1%	10	5.5%	35	19.3%
2001	Paroled - Regular	5,778	947	16.4%	1,762	30.5%	3,042	52.6%
	Discharge	184	1	0.5%	9	4.9%	24	13.0%
2002	Paroled - Regular	5,841	910	15.6%	1,707	29.2%	2,938	50.3%
	Discharge	174	1	0.6%	9	5.2%	31	17.8%
2003	Paroled - Regular	5,958	788	13.2%	1,577	26.5%	2,861	48.0%
	Discharge	177	4	2.3%	9	5.1%	43	24.3%
2004	Paroled - Regular	6,075	693	11.4%	1,368	22.5%	2,735	45.0%
	Discharge	169	5	3.0%	9	5.3%	37	21.9%
2005	Paroled - Regular	5,505	413	7.5%	1,025	18.6%	2,317	42.1%
	Discharge	152	5	3.3%	11	7.2%	27	17.8%
2006	Paroled - Regular	5,358	350	6.5%	931	17.4%	2,020	37.7%
	Discharge	147	5	3.4%	12	8.2%	40	27.2%
2007	Paroled - Regular	5,623	357	6.3%	872	15.5%	2,293	40.8%
	Discharge	160	2	1.3%	9	5.6%	37	23.1%
2008	Paroled - Regular	6,160	469	7.6%	1,262	20.5%	2,808	45.6%
	Discharge	145	6	4.1%	13	9.0%	23	15.9%
Total	Paroled - Regular	56,666	6,562	11.6%	13,752	24.3%	26,572	46.9%
	Total Discharged	2,132	59	2.8%	162	7.6%	481	22.6%

Recidivism Rates: (Return Types) Parolees and Discharges

Table 3 and Figures 3, 3-1, and 3-2 show inmates that return to prison for parole violations with a new sentence(s); or parole violators returning with a technical violation(s); and discharges (a reconvicted inmate) that returned to prison as a recommitment with a new sentence. Although the number of technical parole violators returned to ADC since the opening of the Omega Technical Parole Violator Center decreased, the number returned in **2008** more than doubled from **2007**. Even though a new conviction may also have a technical violation attached, the new conviction in most cases will supersede the technical violation making the new conviction the primary reason for return to prison.

Table 3

Recidivism Of Parolees And Discharges								
Year	Total Releases	Type of Return	6 Mths Returns	% Returns	1 Year Returns	% Returns	3 Years Returns	% Returns
1999	5,323	PV/New Sentence	217	4.1%	388	7.3%	616	11.6%
		PV/Technical	581	10.9%	1,156	21.7%	1,848	34.7%
		Discharge - Reconviction	30	0.6%	81	1.6%	309	5.9%
2000	5,872	PV/New Sentence	196	3.3%	424	7.2%	795	13.5%
		PV/Technical	633	10.8%	1,254	10.6%	2,078	14.0%
		Discharge - Reconviction	5	0.1%	23	0.4%	167	2.9%
2001	5,962	PV/New Sentence	283	4.7%	540	9.1%	913	15.3%
		PV/Technical	663	11.1%	1,211	20.3%	1,972	33.1%
		Discharge - Reconviction	2	0.0%	20	0.3%	181	3.0%
2002	6,015	PV/New Sentence	793	13.2%	1,516	25.2%	2,549	42.4%
		PV/Technical	113	1.9%	174	2.9%	215	3.6%
		Discharge - Reconviction	5	0.1%	26	0.4%	205	3.4%
2003	6,135	PV/New Sentence	785	12.8%	1,558	25.4%	2,668	43.5%
		Discharge - Reconviction	7	0.1%	28	0.5%	237	3.9%
2004	6,244	PV/New Sentence	686	11.0%	1,341	21.5%	2,535	40.6%
		Discharge - Reconviction	12	0.2%	36	0.6%	237	3.8%
2005	5,657	PV/New Sentence	407	7.2%	999	17.7%	2,120	37.5%
		Discharge - Reconviction	11	0.2%	37	0.7%	224	4.0%
2006	5,505	PV/New Sentence	346	6.3%	918	16.7%	1,868	33.9%
		Discharge - Reconviction	9	0.2%	25	.4%	192	3.5%
2007	5783	PV/New Sentence	352	6.1%	850	14.7%	1708	29.5%
		PV/Technical	1	0.0%	10	0.2%	454	7.9%
		Discharge - Reconviction	6	0.1%	21	0.4%	168	2.9%
2008	6305	PV/New Sentence	345	5.5%	818	13.0%	1,732	27.5%
		PV/Technical	122	1.9	427	6.8%	925	14.7%
		Discharge - Reconviction	8	0.1%	30	0.5%	174	2.8%

Fig 3-1

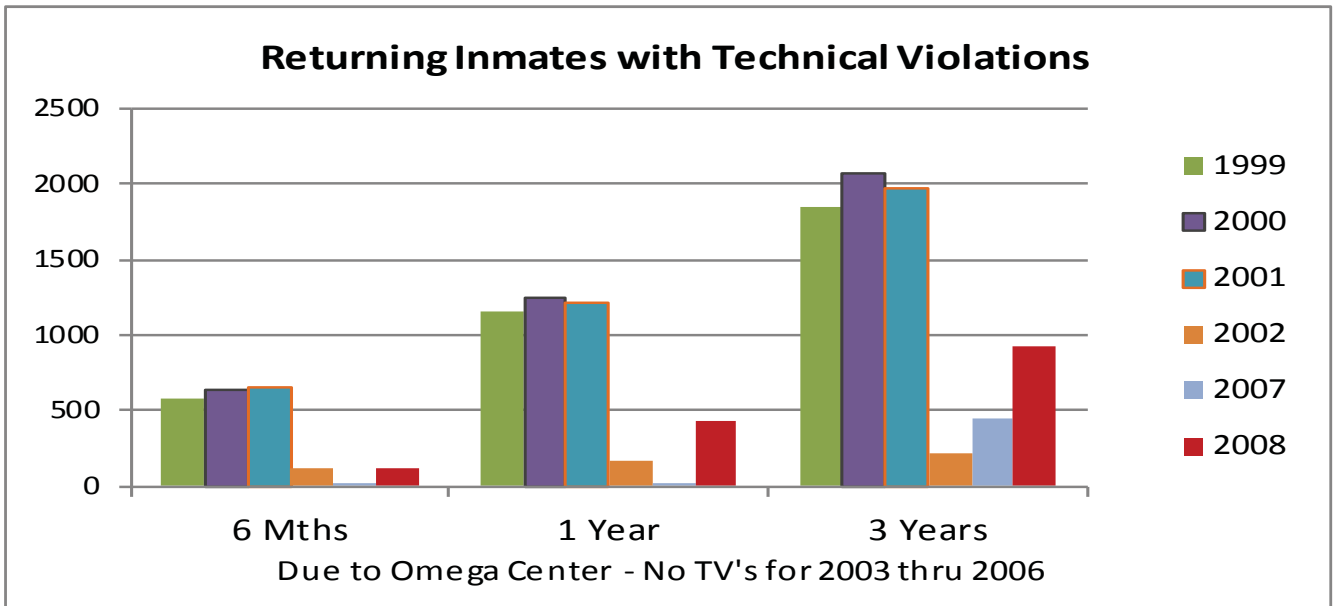


Fig 3-2

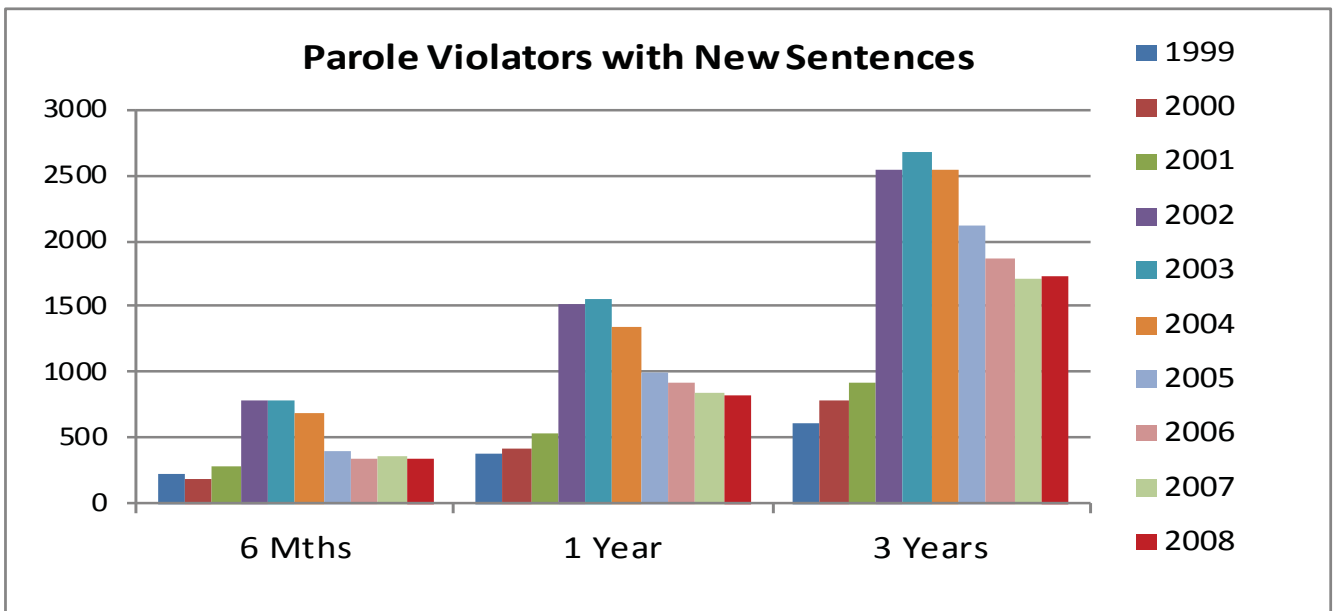
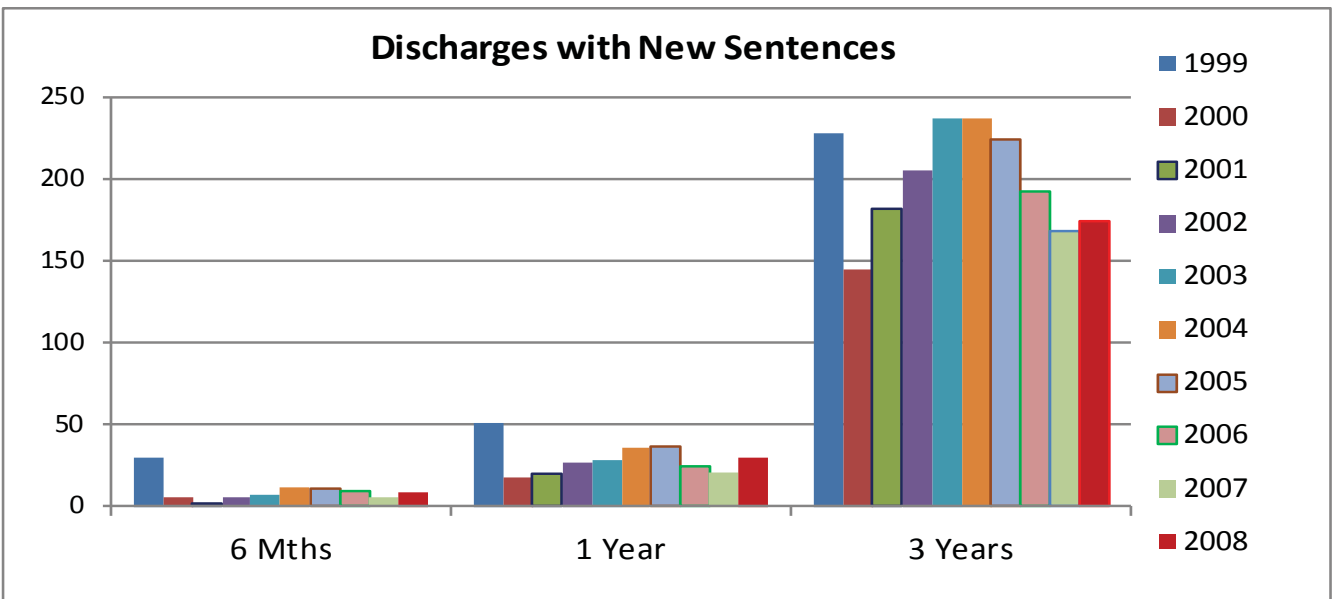


Fig 3-3



Recidivism Rates: Gender

Table 4 and Figures 4, 4-1, 4-2 exhibit recidivism rates by gender. In **2008**, males increased in return rates over the three-year post release time frame. From six months to one year, data demonstrated a fairly constant return rate for both males and females; however, by the end of the third year there was a significant increase in males returning to prison.

Table 4

Recidivism Rates By Gender									
Year	Gender	Total Releases	6 month Return	% Returns	1 Year Returns	% Returns	3 Years Returns	Total % Returns	Total Inmates Not Returning
1999	Female	545	58	10.6%	115	21.1%	206	37.8%	339
	Male	4,785	774	16.2%	1,514	31.6%	2,532	52.9%	2,253
2000	Female	652	75	11.5%	158	24.2%	264	40.5%	388
	Male	5,220	759	14.5%	1,543	29.6%	2,766	53.0%	2,454
2001	Female	625	81	13.0%	140	22.4%	260	41.6%	365
	Male	5,337	867	16.2%	1,631	30.6%	2,806	52.6%	2,531
2002	Female	594	67	11.3%	134	22.6%	242	40.7%	320
	Male	5,421	844	15.6%	1,582	29.2%	2,727	50.3%	2,426
2003	Female	616	54	8.8%	111	18.0%	215	34.9%	401
	Male	5,519	738	13.4%	1,475	26.7%	2,690	48.7%	2,829
2004	Female	551	31	5.6%	56	10.2%	139	25.2%	413
	Male	5,693	667	11.7%	1,321	23.2%	2,633	46.2%	3,060
2005	Female	534	15	2.8%	44	8.2%	123	23.0%	411
	Male	5,124	403	7.9%	992	19.4%	2,221	43.3%	2,903
2006	Female	614	18	2.9%	57	9.3%	137	22.3%	477
	Male	4,891	337	6.9%	886	18.1%	1,923	39.3%	2,968
2007	Female	675	21	3.1%	53	7.9%	158	23.4%	517
	Male	5,783	338	5.8%	828	14.3%	2,172	37.6%	3,611
2008	Female	735	27	3.7%	87	11.8%	211	28.7%	524
	Male	5,570	448	8.0%	1,188	21.3%	2,620	47.0%	2,950

Figure 4

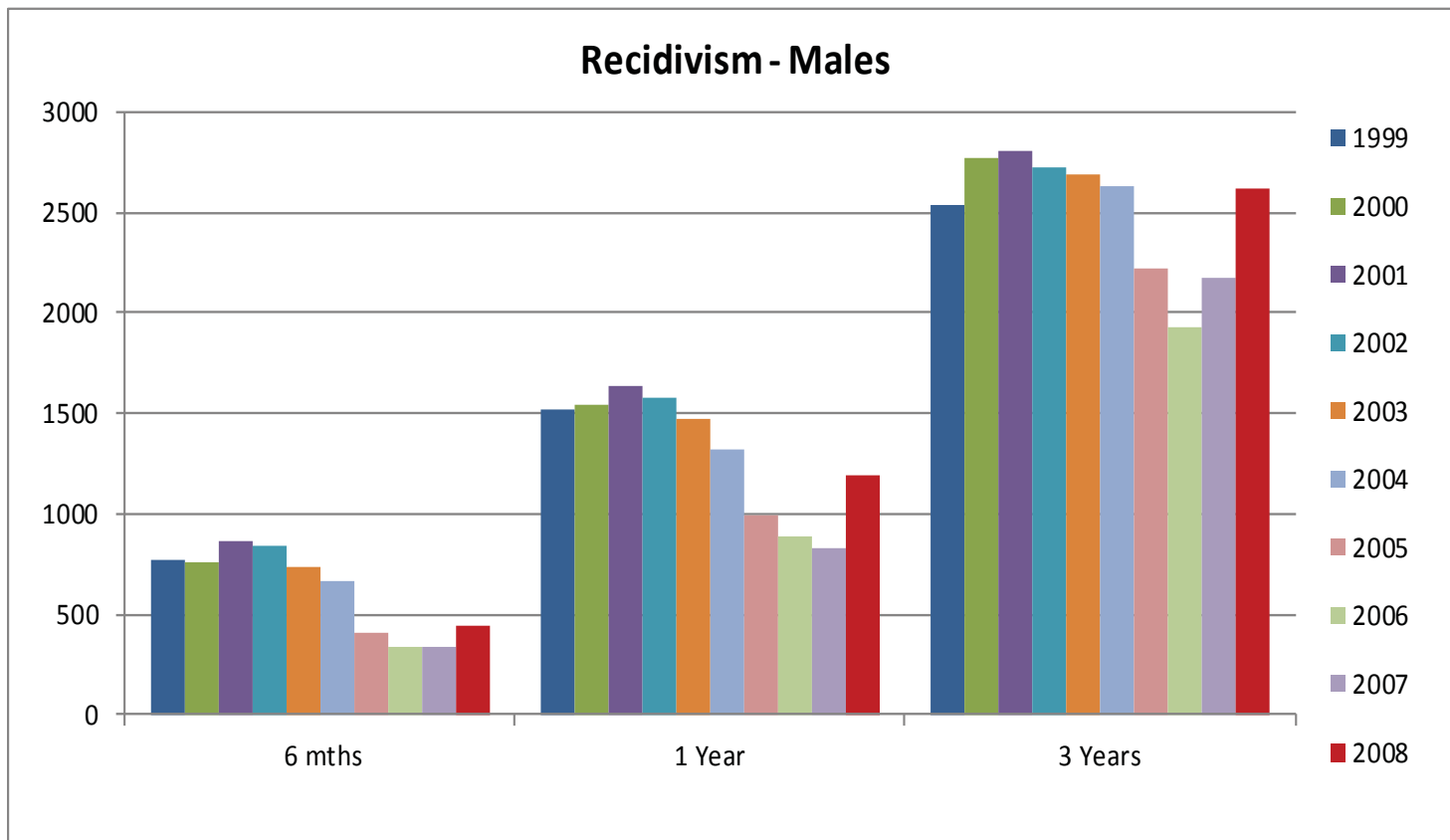


Figure 4 - 1

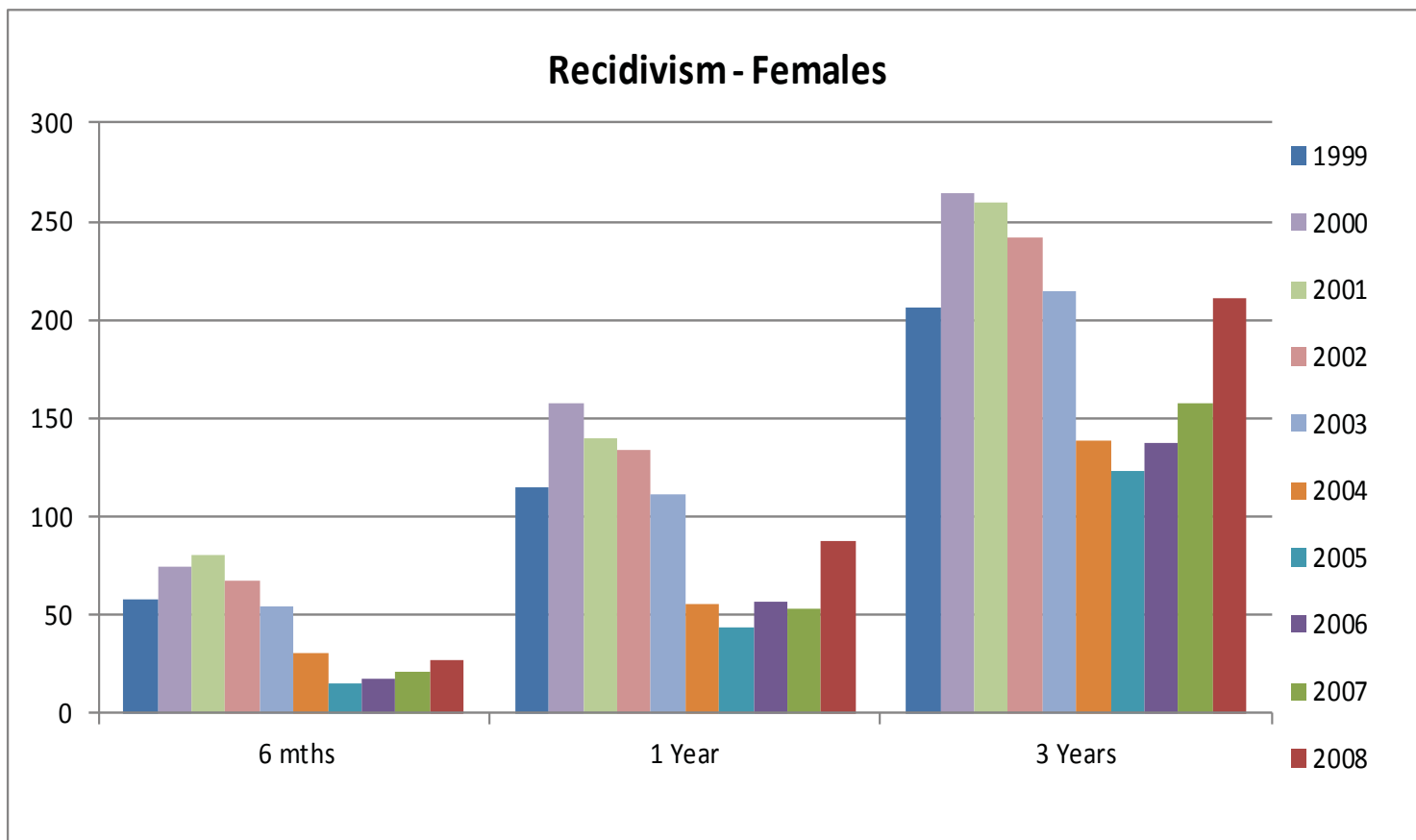
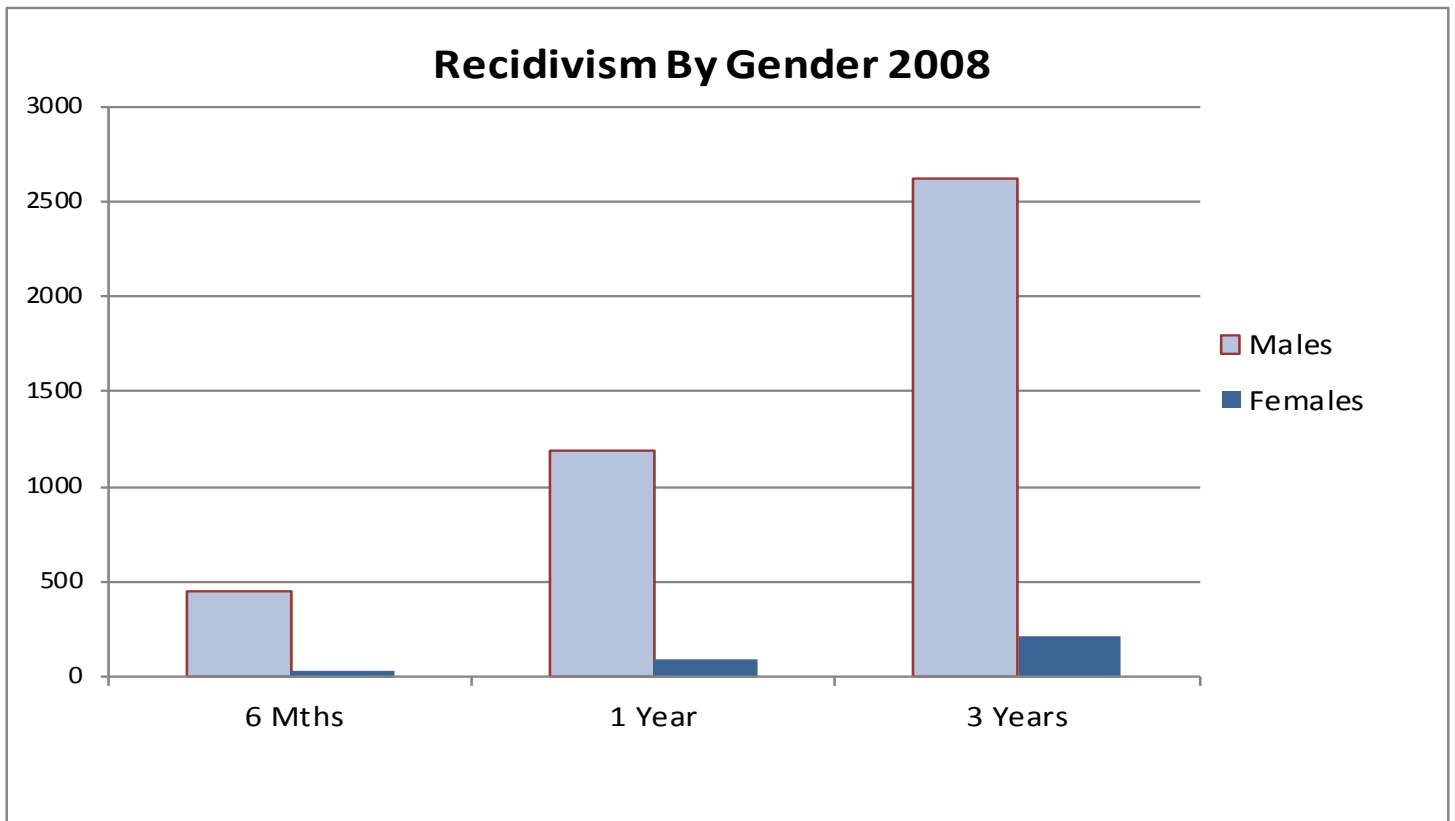


Figure 4 - 2



Recidivism Rates: Race

Figure 1. Recidivism rates were generated by race for 2008 and incorporated time frames of six months, one year, and three years. Recidivism rates were based on three areas of ethnic diversity. Within the ADC, the population primarily consists of Caucasian and African-American racial designations, while only a small percentage consists of Hispanic and Other. For this report, the category of Caucasian is denoted as White, the African-American category is denoted as Black, the Hispanic category consists of Cuban and Mexican racial designations and the Other category incorporates both Asian and Native American. The 2008 recidivism addendum study incorporates Caucasian, African-American, Hispanic, and Other racial designations to demonstrate recidivism rates by race as provided in Table 5. In 2008, 3,419 Caucasian inmates were released and within three years; 1,524 or 44.6% returned to prison, while 2,607 African-American inmates were released with 1,235 returning within three years. For 2008, African-American inmates have a higher recidivism rate (47.4% vs. 44.6%) than their Caucasian counterparts (see Table 5).

Table 5

Recidivism Rates By Race								
Year	Race	Total Releases	6 Month Returns	% Returns	1 Year Returns	% Returns	3 Years Returns	% Returns
1999	Black	2,541	414	16.3%	801	31.5%	1,362	53.6%
	Hispanic	19	2	10.5%	3	15.8%	5	26.3%
	Other	13	0	0.0%	2	15.4%	3	23.1%
	White	2,757	416	15.1%	822	29.8%	1,367	49.6%
2000	Black	2,756	401	14.6%	817	29.6%	1,512	54.9%
	Hispanic	66	6	9.1%	10	15.2%	16	24.2%
	Other	62	4	6.5%	5	8.1%	9	14.5%
	White	2,988	423	14.2%	869	29.1%	1,503	50.3%
2001	Black	2,718	463	17.0%	839	30.9%	1,476	54.3%
	Hispanic	64	3	4.7%	10	15.6%	18	28.1%
	Other	45	3	6.7%	4	8.9%	8	17.8%
	White	3,135	479	15.3%	918	29.3%	1,564	49.9%
2002	Black	2,618	408	15.6%	741	28.3%	1,335	51.0%
	Hispanic	75	5	6.7%	9	12.0%	13	17.3%
	Other	30	0	0.0%	3	10.0%	7	23.3%
	White	3,292	497	15.1%	962	29.2%	1,613	49.0%
2003	Black	2,768	321	11.6%	691	25.0%	1,349	48.7%
	Hispanic	50	4	8.0%	11	22.0%	20	40.0%
	Other	13	0	0.0%	1	7.7%	5	38.5%
	White	3,304	467	14.1%	883	26.7%	1,531	46.3%
2004	Black	2,711	255	9.4%	573	21.1%	1,260	46.5%
	Hispanic	64	10	15.6%	14	21.9%	24	37.5%
	Other	19	1	5.3%	4	21.1%	5	26.3%
	White	3,450	432	12.5%	786	22.8%	1,483	43.0%
2005	Black	2,285	167	7.3%	455	19.9%	1,064	46.6%
	Hispanic	70	6	8.6%	11	15.7%	22	31.4%
	Other	30	4	13.3%	7	23.3%	10	33.3%
	White	3,273	241	7.4%	563	17.2%	1,248	38.1%
2006	Black	2,304	144	6.3%	396	17.2%	925	40.1%
	Hispanic	115	10	8.7%	12	10.4%	29	25.2%
	Other	22	1	4.5%	2	9.1%	4	18.2%
	White	3,064	200	6.5%	533	17.4%	1,102	36.0%
2007	Black	2,374	159	6.7%	403	17.0%	1,057	44.5%
	Hispanic	155	12	7.7%	18	11.6%	34	21.9%
	Other	38	3	7.9%	7	18.4%	16	42.1%
	White	3,210	185	5.8%	453	14.1%	1,223	38%
2008	Black	2,607	200	7.7%	535	20.5%	1,235	47.4%
	Hispanic	247	11	4.5%	26	10.5%	53	21.5%
	Other	32	5	15.6%	12	37.5%	19	59.4%
	White	3,419	259	7.6%	702	20.5%	1,524	44.6%

Recidivism Rates: Age

Age shows to be significantly related to recidivism within the ADC. An inmate's age at his/her last admission was significantly related to return to custody (See Table 6). For both males and females, the age cohort of 25-34 at admissions is most likely to return to prison within three (3) years (See Figure 6).

Table 6

2008 Recidivism by Age (female)					
Gender	AGE	6 Months Returns	1 Year Returns	3 Years Returns	Total % Returns
Female	18 - 24	5	11	25	11.85%
	25 - 34	16	46	91	43.13%
	35 - 44	4	21	72	34.12%
	45 - 54	2	7	21	9.95%
	55 - 64	0	2	2	.95%
	Total		27	87	211

Table 6-1

2008 Recidivism by Age (male)					
Gender	AGE	6 Months Returns	1 Year Returns	3 Years Returns	Total % Returns
Male	<= 17	0	0	2	<0%
	18 - 24	92	231	515	20%
	25 - 34	206	515	1100	42%
	35 - 44	91	282	662	25%
	45 - 54	50	141	292	11%
	55 - 64	9	18	46	2%
	>= 65	0	1	3	<0%
	Total		448	1,188	2,620

Figure 6

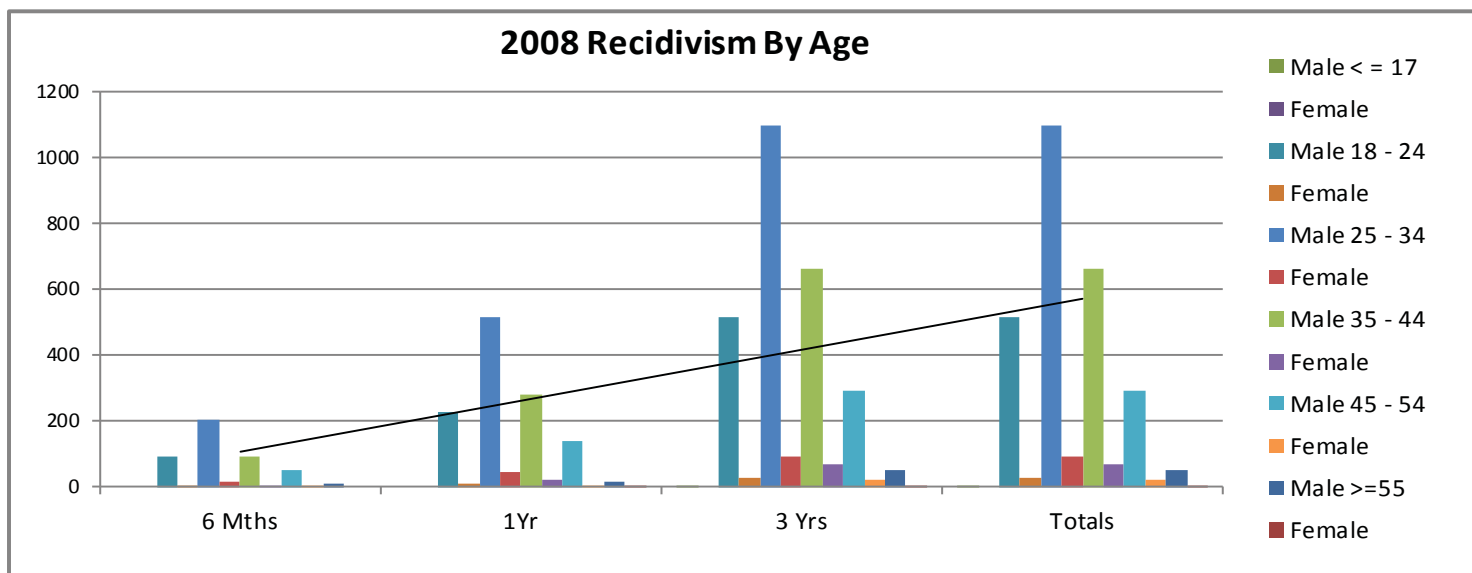


Table 7

Recidivism Rates By Offense Category			
Offense Category	No.Releases	Ret w/in 3 yrs	% Returned
0101 - Capital Murder	5	3	60.0%
0102 - Murder-1st Degree	37	15	40.5%
0103 - Murder-2nd Degree	65	30	46.2%
0104 - Manslaughter	78	20	25.6%
0105 - Negligent Homicide	23	7	30.4%
0201 - Kidnapping	45	22	48.9%
0202 - False Imprisonment-1st Degree	33	20	60.6%
0203 - Vehicular Piracy	1	1	100.0%
0204 - Permanent Detention	2	1	50.0%
0219 - Injury/Inter W/Gov. Property	1	1	100.0%
0301 - Robbery	417	224	53.7%
0302 - Aggravated Robbery	139	64	46.0%
0401 - Battery-1st Degree	128	53	41.4%
0402 - Battery-2nd Degree	329	183	55.6%
0403 - Aggravated Assault	210	113	53.8%
0404 - Terroristic Threatening	172	100	58.1%
0405 - Terroristic Act	28	15	53.6%
0406 - Agg. Assault On Corr. Employee	8	4	50.0%
0407 - Battery 3rd Deg. (Enhanced)	4	2	50.0%
0408 - Intro Cont Subs Body/Another	2	1	50.0%
0416 - Offense Com. Presence of Child	1	0	0.0%
0501 - Rape	68	15	22.1%
0502 - Carnal Abuse-1st Degree	6	2	33.3%
0503 - Carnal Abuse-2nd Degree	2	1	50.0%
0504 - Sexual Abuse-1st Degree	57	24	42.1%
0505 - Violation Of A Minor-2nd Dg	1	1	100.0%
0510 - Carnal Abuse-3rd Degree	11	4	36.4%
0513 - Sexual Assault	149	52	34.9%
0518 - Reg Sex offend near cert fac1	2	1	50.0%
0658 - Residential Burglary	568	351	61.8%
0659 - Commercial Burglary	265	164	61.9%
0701 - Incest	11	1	9.1%
0702 - Domestic Battering-1st Degree	14	7	50.0%
0703 - Domestic Battering-2nd Degree	42	14	33.3%
0704 - Agg. Aslt On Family/Household	19	13	68.4%
0705 - Non-Support	44	15	34.1%
0707 - Interference With Custody	2	0	0.0%
0708 - Domestic Battering-3rd Degree	73	29	39.7%
0801 - Endanger Welfare Minor-1st Dg	11	3	27.3%
0803 - Permit Child Abuse	3	0	0.0%

Table 7 -contd.

Recidivism Rates By Offense Category			
Offense Category	No.Releases	Ret w/in 3 yrs	% Returned
0804 - Engage Child In Sex Explct	1	0	0.0%
0805 - Trans, Distr.Mat. Deplctg Chil	3	2	66.7%
0809 - Solicit Money/Prop From Incomp	1	1	100.0%
0810 - Sexual Solicitation Of A Child	5	1	20.0%
0813 - Dist/Poss/View Sex Explicit	7	3	42.9%
0814 - Computer Child Pornography	10	2	20.0%
0828 - Expose Child to Chem Substance	7	2	28.6%
0830 - Sexual Indecency With A Child	31	16	51.6%
0901 - Abuse Of Adults	3	0	0.0%
1001 - Theft Of Property	661	332	50.2%
1002 - Theft Of Services	1	0	0.0%
1004 - Theft By Receiving	217	105	48.4%
1005 - Theft Of Leased Property	4	2	50.0%
1006 - Theft Of Public Benefits	5	2	40.0%
1046 - Internet Stalk.- Child Fel. C	19	2	10.5%
1101 - Forgery	221	99	44.8%
1102 - Defrauding Secured Creditors	1	0	0.0%
1104 - Fraudulent Use Of Credit Card	14	6	42.9%
1113 - Hot Check Violation	100	34	34.0%
1118 - Financial Identity Fraud	3	1	33.3%
1202 - Impair Oper. Of Vital Pub.Facil	2	1	50.0%
1203 - Arson	16	6	37.5%
1204 - Reckless Burning	1	1	100.0%
1205 - Criminal Mischief-1st Degree	29	15	51.7%
1207 - Criminal Mischief 2nd Degree	2	1	50.0%
1301 - Burglary	9	5	55.6%
1302 - Breaking And Entering	76	38	50.0%
1601 - Perjury	2	2	100.0%
1603 - Intimidating A Witness	2	1	50.0%
1604 - Tampering With Physical Evid.	12	5	41.7%
1612 - Retaliation Against Informant	2	1	50.0%
1702 - Hindering Apprehension Or Proc	11	5	45.5%
1705 - Escape-1st Degree	1	1	100.0%
1706 - Escape-2nd Degree	4	1	25.0%
1707 - Permitting Escape-1st Degree	1	0	0.0%
1711 - Furnishing Prohib. Articles	13	6	46.2%
1712 - Failure To Appear	81	31	38.3%
1713 - Fleeing	42	14	33.3%
1715 - Filing A False Report	1	0	0.0%
1720 - Fail To Register Child/Sex Off	32	7	21.9%

Table 7 -contd.

Recidivism Rates By Offense Category			
Offense Category	No.Releases	Ret w/in 3 yrs	% Returned
2201 - Fail. To Keep Records Dist Drg	80	31	38.8%
2202 - Advertise Drug Paraphernalia	475	161	33.9%
2203 - Manu/Delv/Poss Control Subs.	822	268	32.6%
2214 - Poss W/I To Manufacture	3	1	33.3%
2215 - Possession Of Ephedrine	3	0	0.0%
2301 - Viol Of Omb DWI Act 4th Offens	56	12	21.4%
2601 - Promoting Prostitution - 1st Deg	1	0	0.0%
2704 - Communicating False Alarm	1	0	0.0%
2707 - Stalking	3	1	33.3%
2901 - Poss. Firearm Certain Person	38	9	23.7%
2902 - Criminal Use Prohibited Weapon	2	1	50.0%
2907 - Poss. Of Firearm - School	1	0	0.0%
2910 - Poss. Firearm Incar. Person	1	1	100.0%
3001 - Criminal Attempt	43	10	23.3%
3003 - Criminal Conspiracy	36	8	22.2%
6501 - False Evid. Title Or Registra.	1	1	100.0%
6503 - Fail To Stop Acc. W/Inj/Death	4	0	0.0%
8001 - Discharge Firearm From Vehicle	2	0	0.0%
8002 - Engage In Viol Crim Group Act	2	0	0.0%
8004 - Simul. Poss Of Drugs/Firearm	2	0	0.0%

Recidivism Rates: Offense

Table 7 reflects the return rates as a result of the type of offense, for a select period of time. A variety of offenses were analyzed in order to understand the breadth and depth of recidivism rates by offense and the return to prison within a three-year time frame. For clarity, Table 7 denotes the offense category, the actual number of releases/returns for **2008**, and the actual numbers and percent of returns within three years for each category.