



Department  
Of Correction

# Arkansas Recidivism Study

George Brewer, Research and Planning Administrator  
Brenda K. Wilson, Management Project Analyst

2010

1. Overall Recidivism rate has increased from 37.4% in 2006 to 40.3% in 2007, a 2.9 variance (Table 1, pg. 2).
2. At a three-year post release, 2007 recidivism rates increased from 6.2% the first six months to 40.3% in three years, a 34.1% overall increase (Table 1, pg. 2).
3. Recidivism rates, over three years for paroled inmates at 40.8%, were moderately higher than that of discharged inmates at 23.1% in 2007 (Table 2, pg. 3).
4. For 2007, parole and discharge return rates increased significantly throughout the three-year post return (Table 2, pg. 3).
5. Parole Violators with New Sentences, within a three-year post release, accounted for 74% of the recidivists' and Parole Violators with Technical Violations accounted for 20% (Table 3, pg. 4).
6. 2007 recidivism rates, for male offenders, show a three-year post release return rate of 37.6% as compared to a return rate of 23.4% for females (Table 4, pg. 6).
7. An overall three-year post release for CY2007 demonstrates that 44.5% of blacks and 38% of whites return to prison. The recidivism rates, for blacks and whites, increased by 4.4% points and 2% points respectively, from the previous year (Table 5, pg. 9).
8. For 2007, releases within a three-year post release and a return to prison, inmates within the age range of 25-34 for both males and females, demonstrated the highest total return rates (Table 6, pg. 10).

## Arkansas' Recidivism Study (Addendum)

The 2007 recidivism research is an addendum to the original 1997-1999 study produced in 2003 and to the addendums through 2006, produced in prior years. This addendum was prepared by the Arkansas Department of Correction's Research and Planning Division. The addendum reviews the return rates of inmates released from custody in CY2007, as compared to prior years. The data for this research was obtained from the ADC electronic Offender Management Information System (eOMIS). If an individual was released **January 1, 2007** through **December 31, 2007**, the data provided reflects returns for a full three-year post release. All charts and tables reflect a three-year post release review and are utilized strictly for clarity and ease to the reader.

The study is categorized into return rates of six months, one year, and three years, respectively. As with the 2006 addendum regarding a three-year post release of inmates produced in 2009, the ADC Research and Planning Section will continue to study, track and update trends in release/return rates annually.

### Overall Recidivism Rates

As demonstrated, Table 1 shows the overall ADC 2007 recidivism rates. The post-release period consists of six months, one year, and three years, from 1997 through 2007. In 2007, there were a total of 5,783 inmates released from ADC (refer to Table 1, year 2006). Within six months of release, 6.2% returned to prison. Within one year of release, 15.2% returned and within three years there was an overall rate of 40.3% returned to prison. ADC has experienced an average of 46.7% average return rate for inmates released from prison, over the ten years studied.

*\*In all tables, the "number of releases" are the number of unduplicated releases in a given year used to generate recidivism rates. Table 1 does not specify the type of return. It demonstrates an overall return rate, regardless of reason.*

Table 1

<b>Overall Recidivism Rates</b>								
<b>Release Year</b>	<b>Total Releases</b>	<b>% Returned 6 Months</b>	<b># Returned 6 Months</b>	<b>% Returned 1 Year</b>	<b># Returned 1 Year</b>	<b>% Returned 3 Years</b>	<b># Returned 3 Years</b>	<b>Total % Returns</b>
1998	5,434	16.5%	898	31.2%	1,694	52.0%	2,825	52.0%
1999	5,330	15.6%	832	30.6%	1,629	51.4%	2,738	51.4%
2000	5,872	14.2%	834	29.0%	1,701	51.8%	3,040	51.8%
2001	5,962	15.9%	948	29.7%	1,771	51.4%	3,066	51.4%
2002	6,015	15.1%	911	28.5%	1,716	49.4%	2,969	49.4%
2003	6,135	12.9%	792	25.9%	1,586	47.4%	2,905	47.4%
2004	6,244	11.2%	698	22.1%	1,377	44.4%	2,772	44.4%
2005	5,657	7.4%	418	18.3%	1,036	41.4%	2,344	41.4%
2006	5,505	6.4%	355	17.1%	943	37.4%	2,060	37.4%
2007	5,783	6.2%	359	15.2%	881	40.3%	2,330	40.3%
<b>Averages</b>	<b>5,794</b>	<b>12.2%</b>	<b>705</b>	<b>24.8%</b>	<b>1,433</b>	<b>46.7%</b>	<b>2,705</b>	<b>46.7%</b>

## Recidivism Rates: Release Type

Table 2 demonstrates recidivism rate by type of release. ADC releases inmates by parole with supervision, which is granted by the Parole Board, or by discharge (max flat of sentence). In **2007**, there were **5,623** inmates released by regular parole and **160** inmates discharged. Results indicate that within six months of release in **2007**, **357** or **6.3%** of inmates released on parole had returned, while only **2** or **1.3%** of inmates discharged returned with a new sentence. Total returns of parole releases from ADC in **2007** show a **40.8%** return rate, while discharges reflect a **23.1%** return rate.

**Table 2**

<b>Recidivism Rates By Type of Release</b>								
<b>Year</b>	<b>Type of Release</b>	<b>Total Releases</b>	<b>6 Mths Returns</b>	<b>% Returns</b>	<b>1 Year Returns</b>	<b>% Returns</b>	<b>3 Years Returns</b>	<b>% Returns</b>
<b>1998</b>	<b>Paroled - Regular</b>	4,798	870	18.1%	1,557	32.5%	2,596	54.1%
	<b>Discharge</b>	624	27	4.3%	65	10.4%	156	25.0%
<b>1999</b>	<b>Paroled - Regular</b>	4,677	803	17.2%	1,557	33.3%	2,553	54.6%
	<b>Discharge</b>	643	28	4.4%	71	11.0%	184	28.6%
<b>2000</b>	<b>Paroled - Regular</b>	5,691	832	14.6%	1,691	29.7%	3,005	52.8%
	<b>Discharge</b>	181	2	1.1%	10	5.5%	35	19.3%
<b>2001</b>	<b>Paroled - Regular</b>	5,778	947	16.4%	1,762	30.5%	3,042	52.6%
	<b>Discharge</b>	184	1	0.5%	9	4.9%	24	13.0%
<b>2002</b>	<b>Paroled - Regular</b>	5,841	910	15.6%	1,707	29.2%	2,938	50.3%
	<b>Discharge</b>	174	1	0.6%	9	5.2%	31	17.8%
<b>2003</b>	<b>Paroled - Regular</b>	5,958	788	13.2%	1,577	26.5%	2,861	48.0%
	<b>Discharge</b>	177	4	2.3%	9	5.1%	43	24.3%
<b>2004</b>	<b>Paroled - Regular</b>	6,075	693	11.4%	1,368	22.5%	2,735	45.0%
	<b>Discharge</b>	169	5	3.0%	9	5.3%	37	21.9%
<b>2005</b>	<b>Paroled - Regular</b>	5,505	413	7.5%	1,025	18.6%	2,317	42.1%
	<b>Discharge</b>	152	5	3.3%	11	7.2%	27	17.8%
<b>2006</b>	<b>Paroled - Regular</b>	5,358	350	6.5%	931	17.4%	2,020	37.7%
	<b>Discharge</b>	147	5	3.4%	12	8.2%	40	27.2%
<b>2007</b>	<b>Paroled - Regular</b>	5,623	357	6.3%	872	15.5%	2,293	40.8%
	<b>Discharge</b>	160	2	1.3%	9	5.6%	37	23.1%
<b>Total</b>	<b>Paroled - Regular</b>	<b>49,346</b>	<b>6,175</b>	<b>12.5%</b>	<b>12,470</b>	<b>25.3%</b>	<b>23,499</b>	<b>47.6%</b>
	<b>Total Discharged</b>	<b>2,434</b>	<b>76</b>	<b>3.1%</b>	<b>205</b>	<b>8.4%</b>	<b>571</b>	<b>23.5%</b>

## Recidivism Rates: (Return Types) Parolees and Discharges

Table 3 and Figures 3, 3-1, and 3-2 show inmates that return to prison for parole violations with a new sentence(s); or parole violators returning with a technical violation(s); and discharges (a reconvicted inmate) that returned to prison as a recommitment with a new sentence. Since the opening of the Technical Parole Violator Program, a return to prison for a technical violation while on parole has vastly decreased the technical returns, while a parole violation with a new sentence causes the majority of returns. Even though a new conviction may also have a technical violation attached, the new conviction in most cases will supersede the technical violation making the new conviction the primary reason for return to prison. In **2007**, as reflected in Table 3 and Figure 3, within three years, **1,708** or **29.5%** of the releases return to prison as a result of a parole violation or new sentence and **168** or **2.9%** of these discharges, returned as a result of a new charge.

Table 3

Recidivism Of Parolees And Discharges								
Year	Total Releases	Type of Return	6 Mths Returns	% Returns	1 Year Returns	% Returns	3 Years Returns	% Returns
1998	5,434	PV/New Sentence	195	3.6%	378	7.0%	629	11.6%
		PV/Technical	674	12.4%	1,167	21.5%	1,854	34.1%
		Discharge - Reconviction	29	0.5%	79	1.4%	272	5.0%
1999	5,323	PV/New Sentence	217	4.1%	388	7.3%	616	11.6%
		PV/Technical	581	10.9%	1,156	21.7%	1,848	34.7%
		Discharge - Reconviction	30	0.6%	81	1.6%	309	5.9%
2000	5,872	PV/New Sentence	196	3.3%	424	7.2%	795	13.5%
		PV/Technical	633	10.8%	1,254	10.6%	2,078	14.0%
		Discharge - Reconviction	5	0.1%	23	0.4%	167	2.9%
2001	5,962	PV/New Sentence	283	4.7%	540	9.1%	913	15.3%
		PV/Technical	663	11.1%	1,211	20.3%	1,972	33.1%
		Discharge - Reconviction	2	0.0%	20	0.3%	181	3.0%
2002	6,015	PV/New Sentence	793	13.2%	1,516	25.2%	2,549	42.4%
		PV/Technical	113	1.9%	174	2.9%	215	3.6%
		Discharge - Reconviction	5	0.1%	26	0.4%	205	3.4%
2003	6,135	PV/New Sentence	785	12.8%	1,558	25.4%	2,668	43.5%
		Discharge - Reconviction	7	0.1%	28	0.5%	237	3.9%
2004	6,244	PV/New Sentence	686	11.0%	1,341	21.5%	2,535	40.6%
		Discharge - Reconviction	12	0.2%	36	0.6%	237	3.8%
2005	5,657	PV/New Sentence	407	7.2%	999	17.7%	2,120	37.5%
		Discharge - Reconviction	11	0.2%	37	0.7%	224	4.0%
2006	5,505	PV/New Sentence	346	6.3%	918	16.7%	1,868	33.9%
		Discharge - Reconviction	9	0.2%	25	.4%	192	3.5%
2007	5783	PV/New Sentence	352	6.1%	850	14.7%	1708	29.5%
		PV/Technical	1	0.0%	10	0.2%	454	7.9%
		Discharge - Reconviction	6	0.1%	21	0.4%	168	2.9%

Figure 3

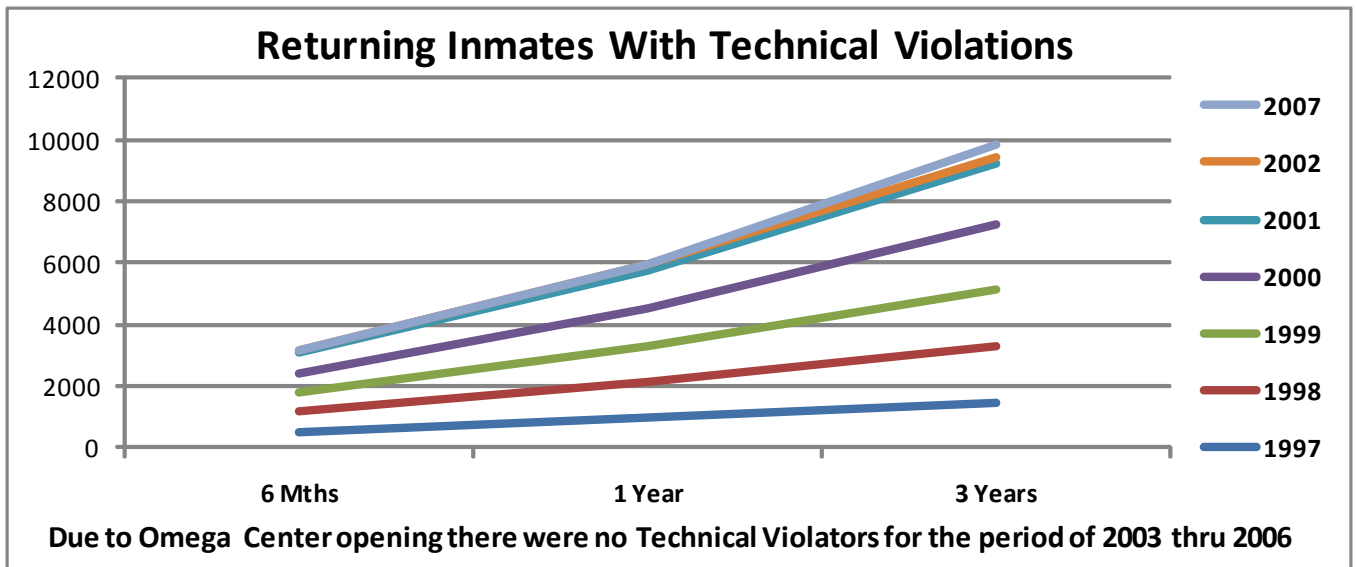


Figure 3-1

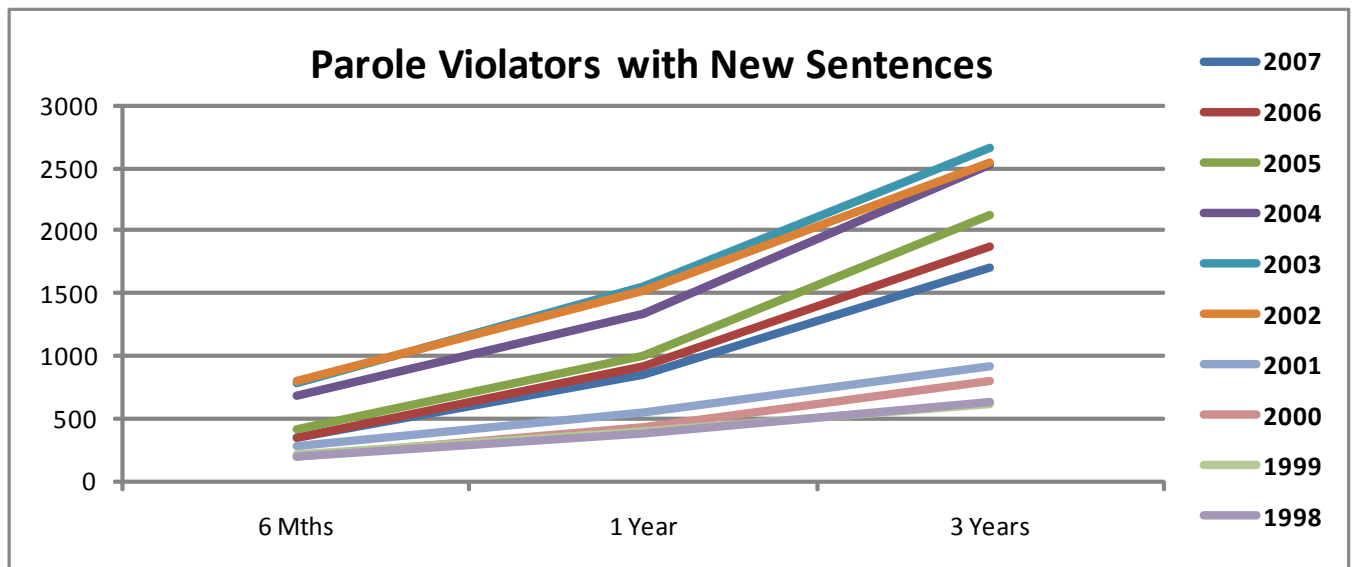
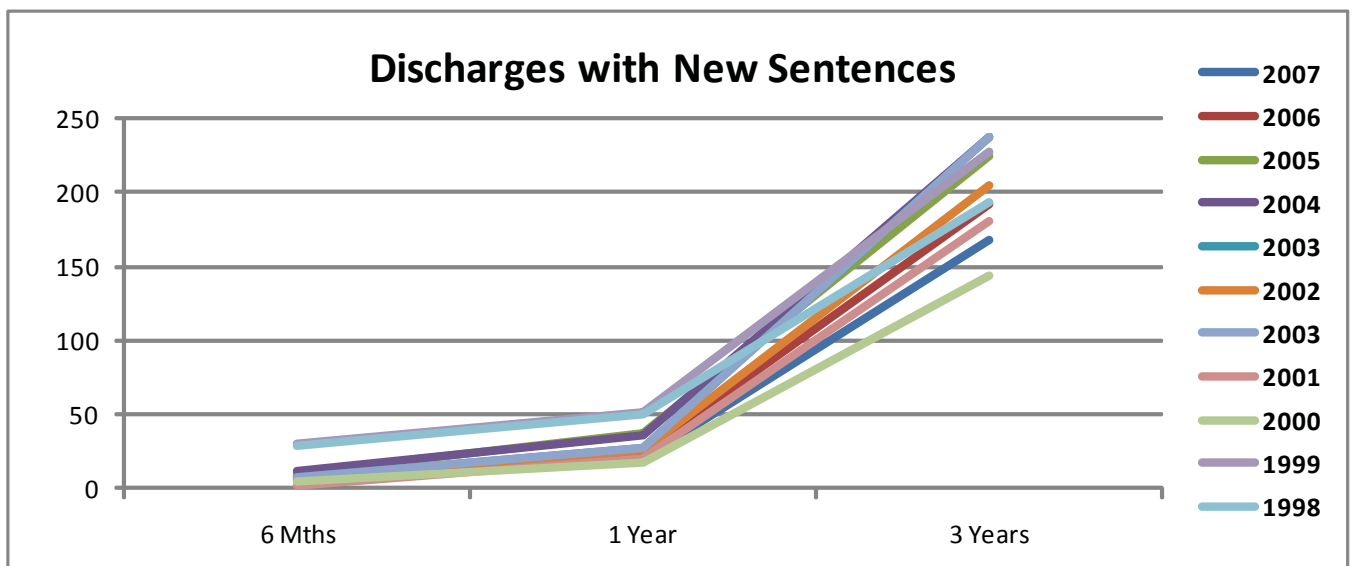


Figure 3-2



## Recidivism Rates: Gender

Table 4 and Figures 4, 4-1, 4-2 exhibit recidivism rates by gender. In **2007**, males increased in return rates over the three-year post release time frame. From six months to one year, data demonstrated a fairly constant return rate for both males and females; however, by the end of the third year there was a significant increase in males returning to prison. Within each consecutive year, the overall return rate for males increased from **1998** to **2001**, while **2002** to **2007** reflects a **12.7 %** decrease in overall recidivism rates.

Table 4

<b>Recidivism Rates By Gender</b>									
<b>Year</b>	<b>Gender</b>	<b>Total Releases</b>	<b>6 month Return</b>	<b>% Returns</b>	<b>1 Year Returns</b>	<b>% Returns</b>	<b>3 Years Returns</b>	<b>Total % Returns</b>	<b>Total Inmates Not Returning</b>
<b>1998</b>	<b>Female</b>	512	75	14.6%	123	24.0%	227	44.3%	285
	<b>Male</b>	4,922	823	16.7%	1,501	30.5%	2,528	51.4%	2,394
<b>1999</b>	<b>Female</b>	545	58	10.6%	115	21.1%	206	37.8%	339
	<b>Male</b>	4,785	774	16.2%	1,514	31.6%	2,532	52.9%	2,253
<b>2000</b>	<b>Female</b>	652	75	11.5%	158	24.2%	264	40.5%	388
	<b>Male</b>	5,220	759	14.5%	1,543	29.6%	2,766	53.0%	2,454
<b>2001</b>	<b>Female</b>	625	81	13.0%	140	22.4%	260	41.6%	365
	<b>Male</b>	5,337	867	16.2%	1,631	30.6%	2,806	52.6%	2,531
<b>2002</b>	<b>Female</b>	594	67	11.3%	134	22.6%	242	40.7%	320
	<b>Male</b>	5,421	844	15.6%	1,582	29.2%	2,727	50.3%	2,426
<b>2003</b>	<b>Female</b>	616	54	8.8%	111	18.0%	215	34.9%	401
	<b>Male</b>	5,519	738	13.4%	1,475	26.7%	2,690	48.7%	2,829
<b>2004</b>	<b>Female</b>	551	31	5.6%	56	10.2%	139	25.2%	413
	<b>Male</b>	5,693	667	11.7%	1,321	23.2%	2,633	46.2%	3,060
<b>2005</b>	<b>Female</b>	534	15	2.8%	44	8.2%	123	23.0%	411
	<b>Male</b>	5,124	403	7.9%	992	19.4%	2,221	43.3%	2,903
<b>2006</b>	<b>Female</b>	614	18	2.9%	57	9.3%	137	22.3%	477
	<b>Male</b>	4,891	337	6.9%	886	18.1%	1,923	39.3%	2,968
<b>2007</b>	<b>Female</b>	675	21	3.1%	53	7.9%	158	23.4%	517
	<b>Male</b>	5,783	338	5.8%	828	14.3%	2,172	37.6%	3,611

Figure 4

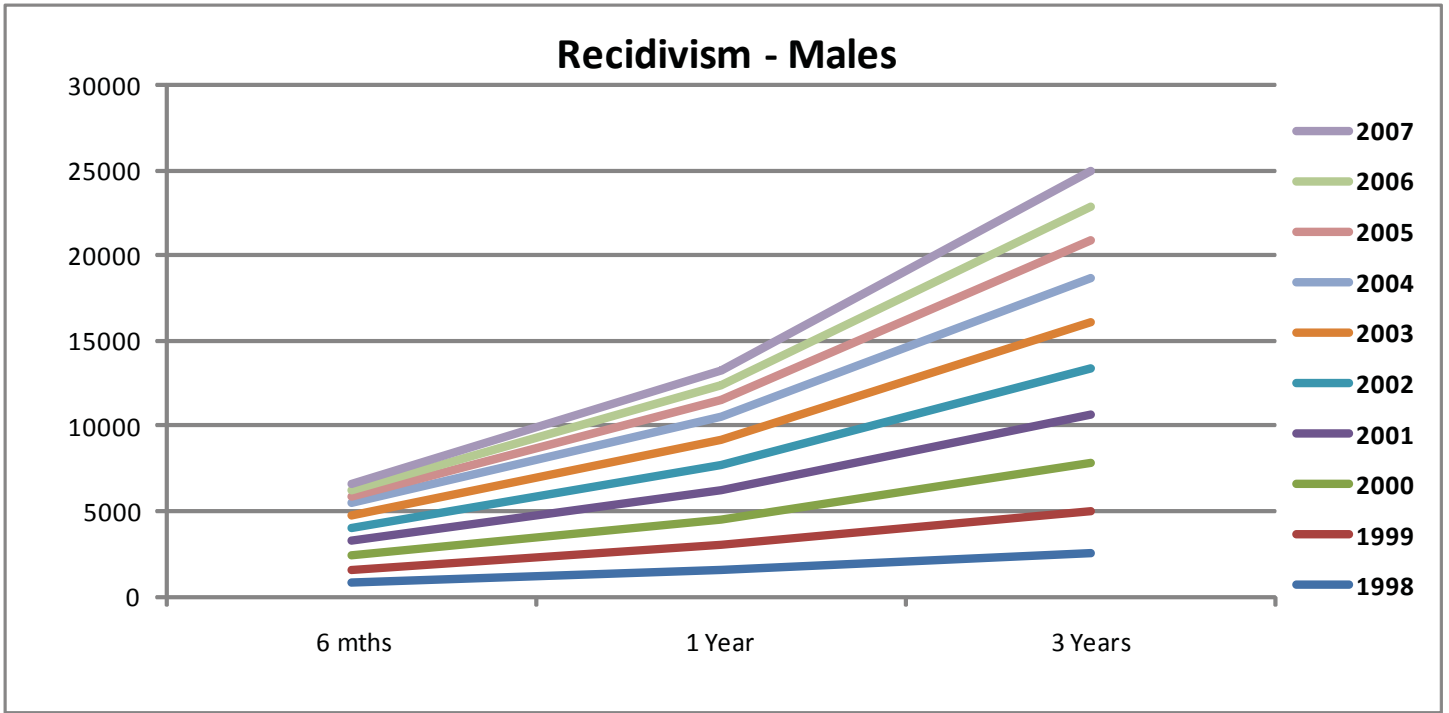


Figure 4-1

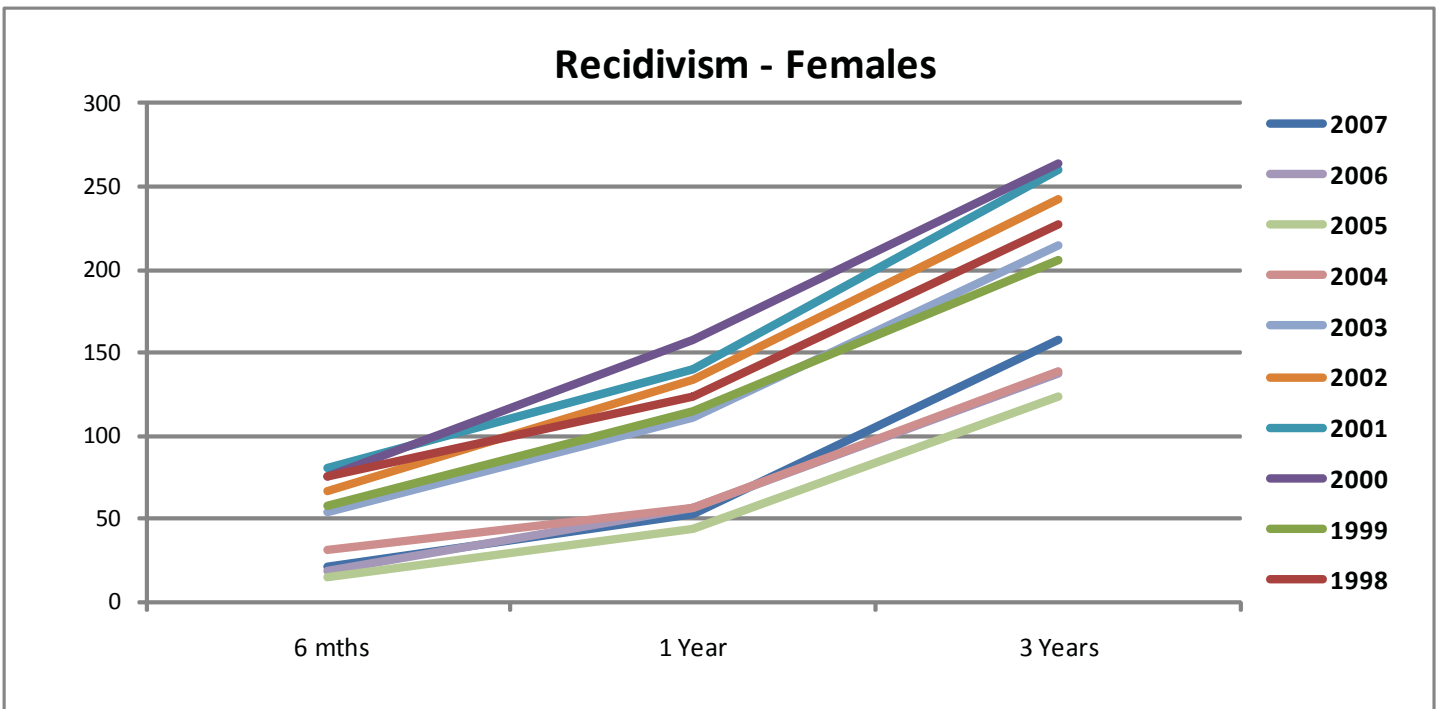
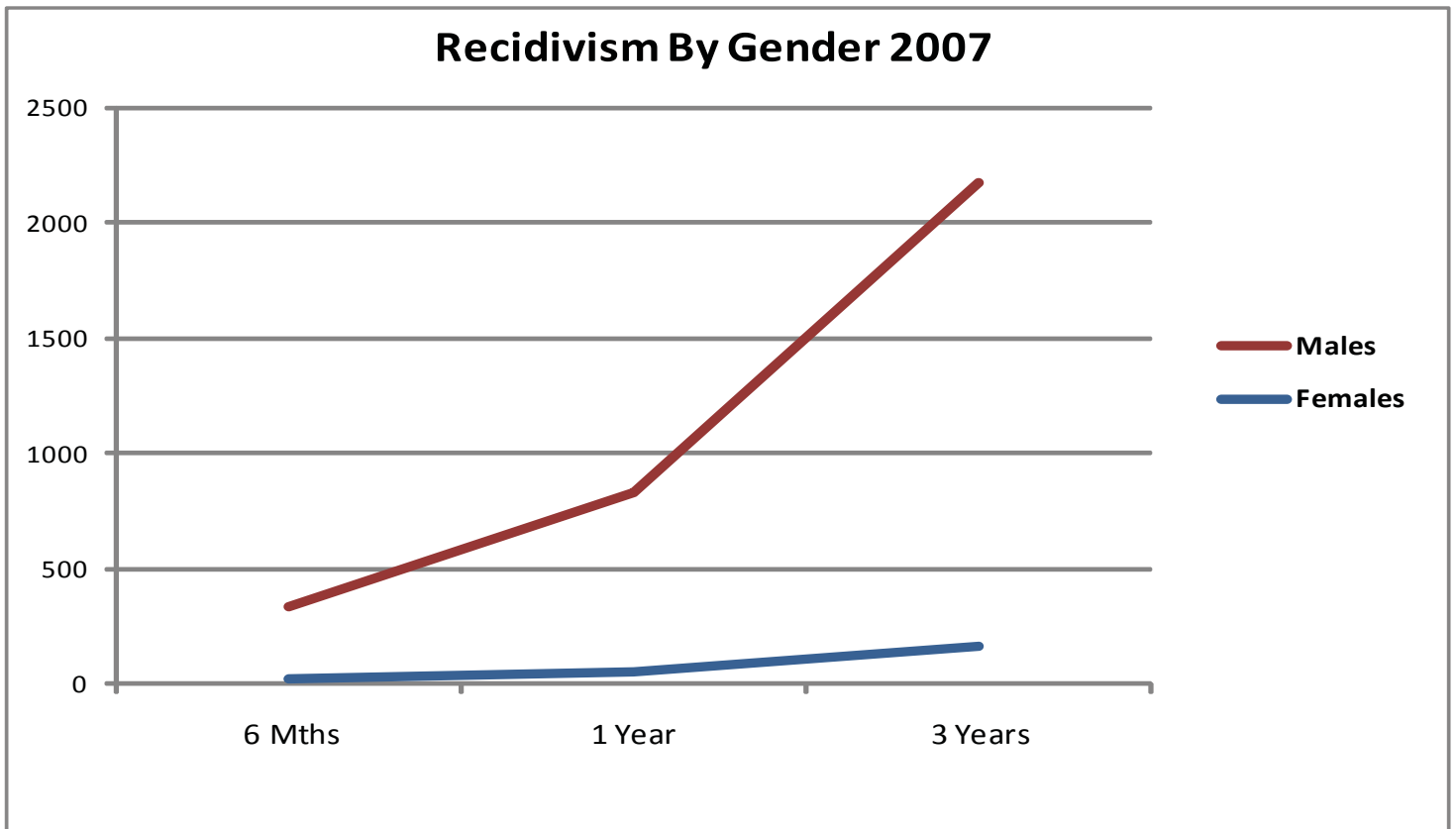


Figure 4-2



### Recidivism Rates: Race

Recidivism rates were generated by race for **CY2007**, and incorporated time frames of six months, one year, and three years. Recidivism rates were based on three areas of ethnic diversity. Within the ADC, the population primarily consists of Caucasian and African-American racial designations, while only a small percentage consists of Hispanic and Other. For this report, the category of Caucasian is denoted as White, the African-American category is denoted as Black, the Hispanic category consists of Cuban and Mexican racial designations and the Other category incorporates both Asian and Native American. The **2007** recidivism addendum study incorporates Caucasian, African-American, Hispanic, and Other racial designations to demonstrate recidivism rates by race as provided in Table 5. In **2007**, **3,210** Caucasian inmates were released. Within six months, **185** or **5.8%** returned to prison. Within one year, **453** or **14.1%** returned and within three years, **1,223** or **38.0%** returned to prison. For **CY2007**, African-American inmates have a higher recidivism rate (**44.5% vs. 40.1%**) than their Caucasian counterparts (see Table 5).



Table 5

Recidivism Rates By Race								
Year	Race	Total Releases	6 Month Returns	% Returns	1 Year Returns	% Returns	3 Years Returns	% Returns
1998	Black	2,685	481	17.9%	877	32.7%	1,463	54.5%
	Hispanic	25	5	20.0%	7	28.0%	8	32.0%
	Other	18	1	5.6%	4	22.2%	9	50.0%
	White	2,706	411	15.2%	737	27.2%	1,275	47.1%
1999	Black	2,541	414	16.3%	801	31.5%	1,362	53.6%
	Hispanic	19	2	10.5%	3	15.8%	5	26.3%
	Other	13	0	0.0%	2	15.4%	3	23.1%
	White	2,757	416	15.1%	822	29.8%	1,367	49.6%
2000	Black	2,756	401	14.6%	817	29.6%	1,512	54.9%
	Hispanic	66	6	9.1%	10	15.2%	16	24.2%
	Other	62	4	6.5%	5	8.1%	9	14.5%
	White	2,988	423	14.2%	869	29.1%	1,503	50.3%
2001	Black	2,718	463	17.0%	839	30.9%	1,476	54.3%
	Hispanic	64	3	4.7%	10	15.6%	18	28.1%
	Other	45	3	6.7%	4	8.9%	8	17.8%
	White	3,135	479	15.3%	918	29.3%	1,564	49.9%
2002	Black	2,618	408	15.6%	741	28.3%	1,335	51.0%
	Hispanic	75	5	6.7%	9	12.0%	13	17.3%
	Other	30	0	0.0%	3	10.0%	7	23.3%
	White	3,292	497	15.1%	962	29.2%	1,613	49.0%
2003	Black	2,768	321	11.6%	691	25.0%	1,349	48.7%
	Hispanic	50	4	8.0%	11	22.0%	20	40.0%
	Other	13	0	0.0%	1	7.7%	5	38.5%
	White	3,304	467	14.1%	883	26.7%	1,531	46.3%
2004	Black	2,711	255	9.4%	573	21.1%	1,260	46.5%
	Hispanic	64	10	15.6%	14	21.9%	24	37.5%
	Other	19	1	5.3%	4	21.1%	5	26.3%
	White	3,450	432	12.5%	786	22.8%	1,483	43.0%
2005	Black	2,285	167	7.3%	455	19.9%	1,064	46.6%
	Hispanic	70	6	8.6%	11	15.7%	22	31.4%
	Other	30	4	13.3%	7	23.3%	10	33.3%
	White	3,273	241	7.4%	563	17.2%	1,248	38.1%
2006	Black	2,304	144	6.3%	396	17.2%	925	40.1%
	Hispanic	115	10	8.7%	12	10.4%	29	25.2%
	Other	22	1	4.5%	2	9.1%	4	18.2%
	White	3,064	200	6.5%	533	17.4%	1,102	36.0%
2007	Black	2,374	159	6.7%	403	17.0%	1,057	44.5%
	Hispanic	155	12	7.7%	18	11.6%	34	21.9%
	Other	38	3	7.9%	7	18.4%	16	42.1%
	White	3,210	185	5.8%	453	14.1%	1,223	38%

## Recidivism Rates: Age

Age shows to be significantly related to recidivism within the ADC. An inmate's age at his/her last admission was significantly related to return to custody (See Table 6). For males, this was fairly evident when reviewing age cohorts of **25-34** as primary and **18-24** instead of **35-44** as reported last year, as secondary return age ranges. Females returning to prison also demonstrated increased returns in age ranges of **25-34** and **35-44** (See Figure 6).

Table 6

<b>2007 Recidivism by Age (female)</b>					
Gender	AGE	6 Months Returns	1 Year Returns	3 Years Returns	Total % Returns
Female	18 - 24	7	9	18	11.4%
	25 - 34	12	26	73	46.2%
	35 - 44	4	13	49	31.0%
	45 - 54	2	5	18	11.4%
	Total	21	53	158	100.0%

Table 6-1

<b>2007 Recidivism by Age (male)</b>					
Gender	AGE	6 Months Returns	1 Year Returns	3 Years Returns	Total % Returns
Male	<= 17	1	1	2	<0.1%
	18 - 24	76	179	445	20%
	25 - 34	141	329	869	40%
	35 - 44	75	200	571	26%
	45 - 54	42	108	253	12%
	55 - 64	3	11	31	1%
	>= 65	0	0	1	<0.1%
	Total	338	828	2,172	100.0%

Figure 6

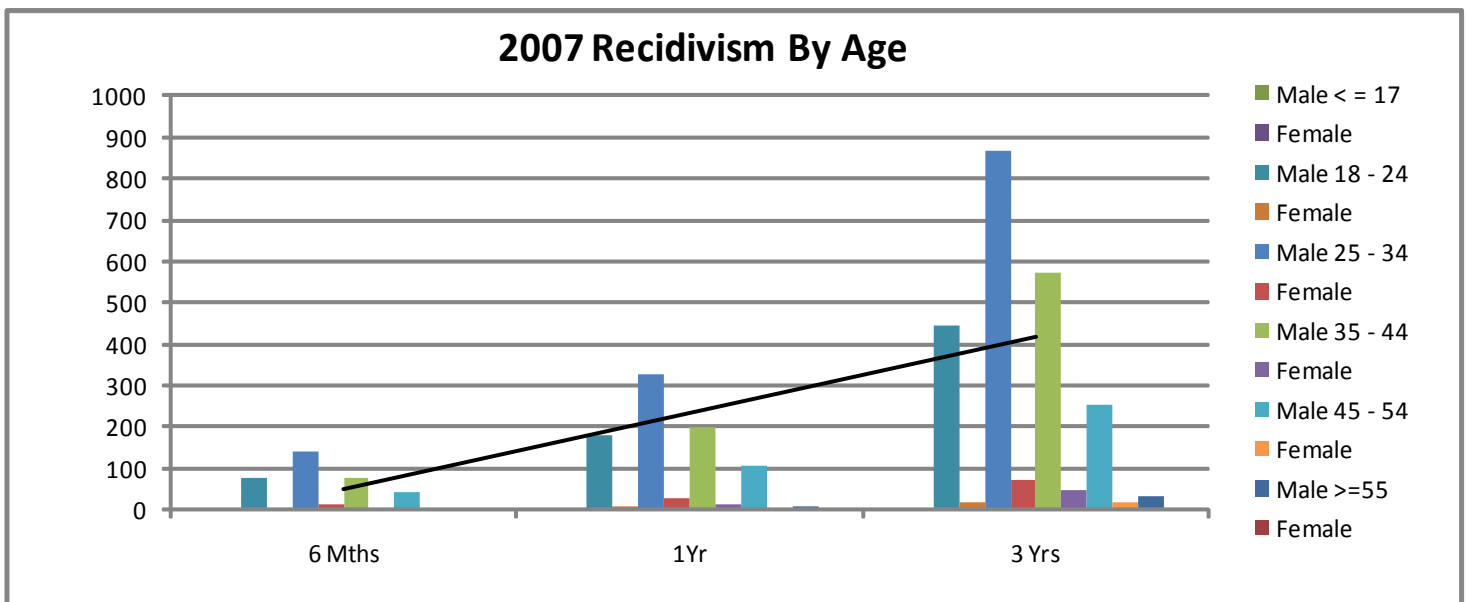


Table 7

<b>Recidivism Rates By Offense Category</b>			
<b>Offense Category</b>	<b>No.Releases</b>	<b>Ret w/in 3 yrs</b>	<b>% Returned</b>
0101 - Capital Murder	4	2	50.0%
0102 - Murder-1st Degree	51	17	33.3%
0103 - Murder-2nd Degree	40	9	22.5%
0104 - Manslaughter	36	10	27.8%
0105 - Negligent Homicide	10	4	40.0%
0201 - Kidnapping	40	20	50.0%
0202 - False Imprisonment-1st Degree	29	11	37.9%
0301 - Robbery	404	210	52.0%
0302 - Aggravated Robbery	160	59	36.9%
0401 - Battery-1st Degree	107	42	39.3%
0402 - Battery-2nd Degree	291	129	44.3%
0403 - Aggravated Assault	175	78	44.6%
0404 - Terroristic Threatening	133	60	45.1%
0405 - Terroristic Act	27	11	40.7%
0406 - Agg. Assault On Corr. Employee	2	1	50.0%
0408 - Intro Cont Subs Body/Another	1	0	0.0%
0501 - Rape	52	11	21.2%
0502 - Carnal Abuse-1st Degree	4	2	50.0%
0503 - Carnal Abuse-2nd Degree	1	1	100.0%
0504 - Sexual Abuse-1st Degree	76	32	42.1%
0505 - Violation Of A Minor-1st Dg	3	0	0.0%
0507 - Exposing One To HIV	1	0	0.0%
0510 - Carnal Abuse-3rd Degree	11	4	36.4%
0511 - Sexual Solicitation Of A Child	2	0	0.0%
0512 - Indecent Exposure	2	1	50.0%
0513 - Sexual Assault	110	37	33.6%
0518 - Reg Sex offend near cert fact	1	0	0.0%
0701 - Incest	15	4	26.7%
0702 - Domestic Battering-1st Degree	4	0	0.0%
0703 - Domestic Battering-2nd Degree	25	11	44.0%
0704 - Agg. Aslt On Family/Household	18	9	50.0%
0705 - Non-Support	47	18	38.3%
0707 - Interference With Custody	1	1	100.0%
0708 - Domestic Battering-3rd Degree	76	28	36.8%
0801 - Endanger Welfare Minor-1st Dg	9	0	0.0%
0804 - Engage Child In Sex Explot	1	1	100.0%
0805 - Trans, Distr.Mat. Deplctg Chil	2	0	0.0%
0810 - Sexual Solicitation Of A Child	9	1	11.1%
0813 - Dist/Poss/View Sex Explicit	4	1	25.0%
0814 - Computer Child Pornography	8	1	12.5%

Table 7 -contd.

<b>Recidivism Rates By Offense Category</b>			
<b>Offense Category</b>	<b>No.Releases</b>	<b>Ret w/in 3 yrs</b>	<b>% Returned</b>
0815 - Computer Exploitation of Child	1	0	0.0%
0828 - Expose Child to Chem Substance	4	1	25.0%
0830 - Sexual Indecency With A Child	13	9	69.2%
0901 - Abuse Of Adults	2	0	0.0%
1001 - Theft Of Property	1148	604	52.6%
1002 - Theft Of Services	2	1	50.0%
1004 - Theft By Receiving	251	114	45.4%
1005 - Theft Of Leased Property	4	1	25.0%
1006 - Theft Of Public Benefits	6	2	33.3%
1046 - Internet Stalk.- Child Fel. C	3	0	0.0%
1101 - Forgery	242	87	36.0%
1102 - Defrauding Secured Creditors	1	0	0.0%
1104 - Fraudulent Use Of Credit Card	21	5	23.8%
1113 - Hot Check Violation	105	31	29.5%
1118 - Financial Identity Fraud	6	1	16.7%
1203 - Arson	23	7	30.4%
1205 - Criminal Mischief-1st Degree	25	12	48.0%
1207 - Criminal Mischief 2nd Degree	3	1	33.3%
1301 - Burglary	19	9	47.4%
1302 - Breaking And Entering	91	43	47.3%
1303 - Residential Burglary	107	56	52.3%
1304 - Commercial Burglary	48	22	45.8%
1306 - Destroy/Take Cemetary Marker	1	0	0.0%
1604 - Tampering With Physical Evid.	4	3	75.0%
1612 - Retaliation Against Informant	2	1	50.0%
1702 - Hindering Apprehension Or Proc	7	0	0.0%
1705 - Escape-1st Degree	1	0	0.0%
1706 - Escape-2nd Degree	8	1	12.5%
1711 - Furnishing Prohib. Articles	16	2	12.5%
1712 - Failure To Appear	77	30	39.0%
1713 - Fleeing	25	11	44.0%
1715 - Filing A False Report	5	3	60.0%
1718 - Absconding	1	0	0.0%
1720 - Fail To Register Child/Sex Off	26	14	53.8%
2201 - Fail. To Keep Records Dist Drg	71	13	18.3%
2202 - Advertise Drug Paraphernalia	468	132	28.2%
2203 - Manu/Delv/Poss Control Subs.	782	237	30.3%
2214 - Poss W/I To Manufacture	3	2	66.7%
2215 - Possession Of Ephedrine	5	1	20.0%
2218 - Poss Anhyd Ammonia Unlaw/cont	3	1	33.3%

Table 7 -contd.

<b>Recidivism Rates By Offense Category</b>			
<b>Offense Category</b>	<b>No.Releases</b>	<b>Ret w/in 3 yrs</b>	<b>% Returned</b>
2300 - DWI Offenses	1	1	100.0%
2301 - Viol Of Omb DWI Act 4th Offens	37	7	18.9%
2707 - Stalking	1	1	100.0%
2901 - Poss. Firearm Certain Person	19	5	26.3%
2902 - Criminal Use Prohibited Weapon	4	2	50.0%
2904 - Criminal Poss. Of Explosives	1	1	100.0%
2907 - Poss. Of Firearm - School	1	0	0.0%
2912 - Possession Of Defaced Firearm	1	1	100.0%
3001 - Criminal Attempt	46	13	28.3%
3002 - Criminal Solicitation	2	0	0.0%
3003 - Criminal Conspiracy	34	11	32.4%
3513 - Unlawful use/access w/computer	1	1	100.0%
6503 - Fail To Stop Acc. W/Inj/Death	6	2	33.3%
8001 - Discharge Firearm From Vehicle	2	1	50.0%
8002 - Engage In Viol Crim Group Act	2	1	50.0%
8004 - Simul. Poss Of Drugs/Firearm	3	1	33.3%

### **Recidivism Rates: Offense**

Table 7 reflects the return rates as a result of the type of offense, for a select period of time. A variety of offenses were analyzed in order to understand the breadth and depth of recidivism rates by offense and the return to prison within a three-year time frame. For clarity, Table 7 denotes the offense category, the actual number of releases/returns for **2007**, and the actual numbers and percent of returns within three years for each category.