



Vision Statement: To be an honorable and professional organization through ethical and innovative leadership at all levels, providing cost efficient, superior correctional services that return productive people to the community.

Director's Message:

FY11 saw a great deal of effort by members of the various criminal justice disciplines and key legislators to come up with a plan to curb the growth rate of Arkansas' prison population. The Working Group on Sentencing and Corrections was assisted in this process by the PEW Center on the States and together released a consensus report in January 2011. Sentencing reform was introduced during the legislative session and culminated with the enactment of Act 570 of 2011. It has been projected that these sentencing reforms could save the state of Arkansas as much as \$875 in prison construction and operating costs over the next ten years. While it is anticipated that our in-house inmate population will continue to grow, the changes should result in a growth rate that is both more manageable and affordable. That being said, the state of Arkansas and specifically the Department of Correction will continue to rely on a professional and dedicated staff to carry out the agency's mission. As Director, I am proud to say that we have such a staff in place and our achievements to date reflect a readiness by ADC personnel to continue to move forward and provide the citizens of Arkansas with the best correctional system possible. It is on behalf of this staff that I extend our collective thank you for the support this agency has received from the Governor, the general Assembly and the Board of Corrections.

The Mission Statement of the Arkansas Department of Correction is to:

- Provide public safety by carrying out the mandates of the courts;
- Provide a safe, humane environment for staff and inmates;
- Provide programs to strengthen the work ethic;
- Provide opportunities for spiritual, mental, and physical growth.



Sincerely,

Ray Hobbs



Governor - Mike Beebe

annual report

Highlights fy 11

Island of Hope Chapel, Tucker Unit

On May 13, 2011, the Tucker Unit's Island of Hope Chapel celebrated a re-dedication. Warden Stephen Williams, former Chaplain John Hagan and current Chaplain Josh Mayfield welcomed guests from across the state to the newly-renovated worship center. The chapel, first dedicated in November 1969, received attention from the ground up. The structure was leveled and extensive work was done on the drainage system around the building. The chapel received a new roof, 2-by-6 boards in the cathedral ceiling, electrical wiring and a coat of paint. All the wood was sanded and re-stained; new carpet and tile were laid; new heating and air conditioning and security systems were installed and the grounds were landscaped. The project came in under its \$195,000 budget.



Disaster Response

ADC inmates, under the supervision of correctional officers, were busy in Spring 2011 assisting in the aftermath of extreme weather. Gov. Mike Beebe declared 57 of 75 Arkansas counties

disaster areas following weeks of tornadoes and floods in April, which left 21 people dead and many areas along the Mississippi Delta under



water. Several ADC units near Arkansas, White and Mississippi Rivers were affected by rising water, which covered roads, bridges and parking lots. The Tucker, East Arkansas and Delta Regional units used sandbags in preparation for rising waters. Sand was trucked to the Varner Unit, where hundreds of inmates filled bags for the U.S. Army Corps of Engineers. In addition to Varner, Mississippi County Work Release Center, North Central, Grimes, Delta and East Arkansas units also worked removing debris and filling and stacking sandbags in stricken areas.

GED Record

The Ouachita River Correctional Unit hosted Arkansas Correctional School graduation May 24, 2011. The school had a record-breaking 942 GED graduates for the 2010-2011 school year. This beats the previous record of 873 set during the 2007-2008 year. Graduation ceremonies marked the first time an ADC inmate has completed bachelor's degree requirements. Three associate's degrees were also awarded. Dr. Tom Kimbrell, Arkansas Commissioner of Education, was the graduation speaker. Approximately 400 graduates were in attendance at the ceremony.

Coretta Scott King Day

Inmates at the J. Aaron Hawkins Sr. Center for Women participated Feb. 15, 2011, in the first Coretta Scott King Day. The event was sponsored by the Arkansas Martin Luther King Jr. Commission in partnership with the ADC. The program included lunch provided by Red Lobster.



The goal of the program is to promote the King message of non-violent social change, taking responsibility for one's actions and being a better person. The program is for inmates who are within five years of parole.

Dr. Mary Parker

Dr. Mary Parker, vice chair of the Arkansas Board of Corrections, was presented with the 2011 Faculty Excellence Award from the University of Arkansas at Little Rock in recognition of her public service. She has been a corrections board member for 17 years. As institutional liaison to the ADC and Legislative Coordination Committee chair, Dr. Parker has authored bills in four legislative sessions, worked as an advocate and educated legislators on prison issues. Parker is a professor and chair of the UALR Criminal Justice Department.

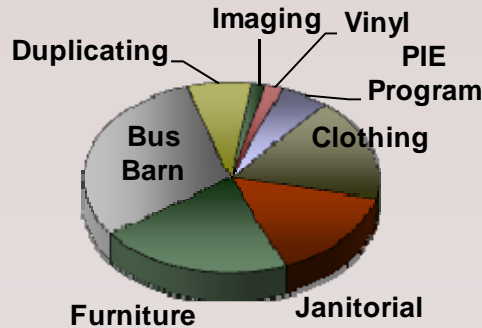


Budget fy 11

Construction Expenditures

Cummins Unit, Trusty Barracks	\$ 519,423
Cummins Unit, Conference Center	19,586
Cummins Unit, Fire House	67,297
Delta Unit, Office Storage	2,356
Diagnostic Unit, VUB	4,756
East AR Unit, Lethal Fence	247,278
East AR Unit, Biometric	6,195
McPherson Unit, Expansion	8,803,724
McPherson Unit, Fence	24,290
Newport, Dog Kennel	3,676
Newport, Equipment Shed	3,373
North Central, Expansion	1,711,938
ORCU, Special Needs Unit	2,508,135
ORCU, Fuel Station	15,798
RLW Unit, Courtroom Remodel	1,711
Tucker Unit, 10Bks Fem. Renovation	32,898
Tucker Unit, Fence	111,818
Tucker, Waste Water Treatment	3,156,562
Tucker Unit, Pods	30,475
Tucker Unit, Armory	1,234
Tucker Unit, Chapel Renovation	64,549
Tucker Max Unit, Chapel	8,584
Tucker/Cummins, Pod	12,269
Various Roof Repairs	186,921
Various Locks & Door Replacement	48,148
Various Energy Savings Projects	1,020,651
Varner Unit, Security Fence	2,744
Varner Unit, Training Center	19,586
Wrightsville Unit, Fence	2,809
Wrightsville Unit, Hawkins Fence	4,514
Total Expenditures	\$18,643,298

Industry Revenue



Clothing	\$1,304,443
Janitorial	1,162,344
Furniture	1,610,182
Bus Barn	2,267,416
Duplicating	539,993
Imaging	117,282
Vinyl	144,071
PIE Program	399,936
Total	\$7,545,667

Average Inmate Cost

	Per Day	Per Year
2000	39.35	14,362.75
2001	40.79	14,888.35
2002	42.59	16,100.15
2003	44.11	15,545.35
2004	47.32	17,271.80
2005	48.24	17,607.60
2006	52.12	19,023.80
2007	54.82	20,009.30
2008	57.13	20,852.45
2009	60.19	21,969.35
2010	60.03	21,910.95
2011	59.70	21,790.50

Care & Custody

Operating Expenditures	
2000	164,025,025
2001	175,717,556
2002	182,187,792
2003	185,682,413
2004	209,542,704
2005	215,042,365
2006	243,207,957
2007	253,342,707
2008	272,844,471
2009	280,135,153
2010	288,888,121
2011	303,606,007

Agriculture Programs

Unit	Acres	Program
Cummins	14,680	Crops, Garden, Livestock
Tucker	3,601	Row crops, Garden
Wrightsville	5,000	Livestock
East AR Reg.	2,500	Cotton, Wheat, Soybean
Ouachita	100	Garden, Livestock
Newport	129	Garden, Livestock
N. Central	93	Orchard, Garden, Livestock
Total Acreage	26,103	

Funding

General Revenue	\$ 304,606,007
Work Release	1,933,547
Agriculture	11,330,554
Industry	7,362,951
Total	\$ 325,520,525

Federal Grants Received

Residential Substance Abuse (07-1907R)	\$ 2,334
Residential Substance Abuse (09-190A08)	16,063
Residential Substance Abuse (09-190B09)	10,123
State Criminal Alien Asst. Program (SCAAP) 08	425,268
Bulletproof Vest Partnership Program (BVP)	6,803
ARRA Energy-Stimulus	3,014,180
FEMA	44,287
Total Received	\$ 3,519,058

Demographics fy 11

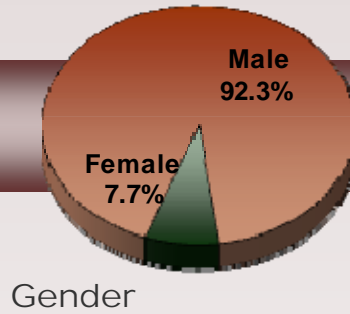
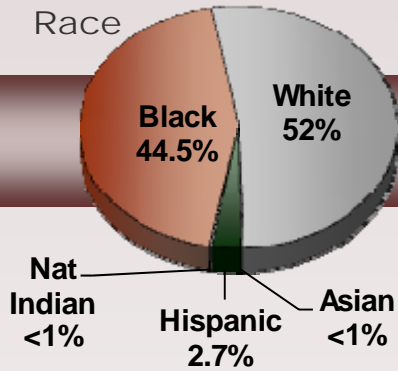
Top 10 Admission Offenses

Offense	Total	Avg Sentence
Controlled Substance	2,107	8y 7m 0d
Burglary	1,070	8y 8m 11d
Theft	746	6y 4m 24d
Assault & Battery	445	9y 2m 6d
Robbery	365	12y 2m 1d
Sexual Offenses	358	14y 8m 16d
Obstructing Gov. Oper.	318	5y 3m 18d
Forgery	242	4y 11m 11d
Offense Involving Family	213	5y 7m 16d
Weapons	201	7y 9m 5d

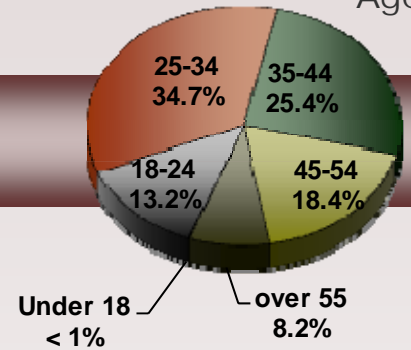
Top 10 Stock Population Offenses

Offense	Total	Avg Sentence
Controlled Substance	3,021	14y 9m 14d
Sexual Offenses	2,345	25y 4m 24d
Homicide	2,017	36y 6m 0d
Aggrav. Robbery	1,313	28y 6m 22d
Burglary	1,225	13y 6m 23d
Assault & Battery	740	17y 4m 17d
Robbery	704	17y 4m 17d
Theft	649	9y 10m 0d
Gang Related	428	23y 0m 13d
Obstruct. Gov Oper.	311	8y 2m 10d

Race

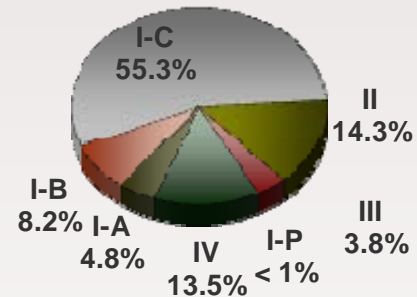


Age



FY11 Releases			Average Sentence Data				
	Male	Female	Total		Male	Female	Total
Asian	26	0	26	Sent.	6y 7m 11d	0	6y 7m 11d
				Stay	2y 7m 8d	0	2y 7m 8d
Black	2,640	174	2,814	Sent.	9y 5m 25d	7y 4m 23d	9y 4m 8d
				Stay	4y 7m 9d	2y 8m 15d	4y 5m 27d
Hispanic	190	19	209	Sent.	8y 2m 8d	6y 0m 0d	8y 0m 0d
				Stay	2y 7m 18d	1y 1m 22d	2y 6m 0d
NA Indian	12	3	15	Sent.	4y 8m 16d	6y 0m 0d	4y 11m 19d
				Stay	1y 10m 20d	2y 7m 2d	2y 0m 10d
Mexican	12	0	12	Sent.	9y 0m 15d	0	9y 0m 15d
				Stay	3y 6m 23d	0	3y 6m 23d
Other	4	0	4	Sent.	2y 4m 0d	0	2y 4m 0d
				Stay	1y 6m 0d	0	1y 6m 0d
Caucasian	3,343	562	3,905	Sent.	8y 2m 0d	6y 8m 25d	7y 11m 13d
				Stay	3y 9m 0d	2y 2m 20d	3y 6m 8d
Total	6,227	758	6,985	Sent.	8y 5m 13d	6y 9m 24d	8y 3m 10d
				Stay	3y 10m 0d	2y 2m 20d	3y 7m 27d

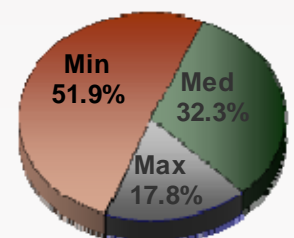
Good Time Class



Population - 6/30/2011

Custody - 14,193
Jurisdiction - 15,528
Average Daily - 16,057

Custody Class



Admissions fy 11

County	Males			Females		
	B	W		B	W	
Arkansas	40	15	0.8%	2	3	0.1%
Ashley	31	19	0.7%	1	3	0.1%
Baxter	0	6	0.1%	40	8	0.7%
Benton	22	61	1.1%	253	71	4.5%
Boone	1	66	0.9%	0	9	0.1%
Bradley	20	5	0.3%	0	0	0.0%
Calhoun	3	2	0.1%	0	0	0.0%
Carroll	6	30	0.5%	0	4	0.1%
Chicot	40	4	0.6%	1	0	0.0%
Clark	34	17	0.7%	1	1	0.0%
Clay	0	43	0.6%	0	4	0.1%
Cleburne	1	39	0.6%	0	8	0.1%
Cleveland	4	8	0.2%	0	0	0.0%
Columbia	31	4	0.5%	2	1	0.0%
Conway	11	18	0.4%	0	1	0.0%
Craighead	63	88	2.1%	4	11	0.2%
Crawford	15	148	2.2%	0	23	0.3%
Crittenden	178	63	3.3%	7	4	0.2%
Cross	10	18	0.4%	1	0	0.0%
Dallas	10	7	0.2%	3	1	0.1%
Desha	24	2	0.4%	0	1	0.0%
Drew	33	22	0.8%	2	7	0.1%
Faulkner	83	106	2.6%	3	8	0.2%
Franklin	2	39	0.6%	0	7	0.1%
Fulton	0	18	0.2%	0	2	0.0%
Garland	67	101	2.3%	8	18	0.4%
Grant	3	34	0.5%	0	6	0.1%
Greene	6	82	1.2%	0	13	0.2%
Hempstead	30	12	0.6%	1	3	0.1%
Hot Springs	29	54	1.1%	0	10	0.1%
Howard	30	20	0.7%	8	3	0.2%
Independence	9	64	1.0%	1	5	0.1%
Izard	0	11	0.2%	0	0	0.0%
Jackson	23	38	0.8%	1	7	0.1%
Jefferson	116	20	1.9%	7	5	0.2%
Johnson	5	59	0.9%	0	14	0.2%
Lafayette	20	8	0.4%	2	3	0.1%
Lawrence	1	42	0.6%	0	6	0.1%
Lee	1	16	0.2%	11	5	0.2%

County	Males			Females		
	B	W		B	W	
Lincoln	2	6	0.1%	0	0	0.0%
Little River	26	20	0.6%	0	7	0.1%
Logan	1	28	0.4%	0	6	0.1%
Lonoke	32	128	2.2%	1	23	0.3%
Madison	0	24	0.3%	0	1	0.0%
Marion	0	18	0.2%	0	1	0.0%
Miller	92	76	2.3%	8	11	0.3%
Mississippi	105	45	2.1%	5	3	0.1%
Monroe	19	14	0.5%	1	3	0.1%
Montgomery	0	6	0.1%	0	0	0.0%
Nevada	19	8	0.4%	0	1	0.0%
Newton	0	5	0.1%	0	3	0.0%
Ouachita	60	15	1.0%	0	2	0.0%
Perry	0	10	0.1%	0	0	0.0%
Phillips	25	11	0.5%	0	0	0.0%
Pike	1	17	0.2%	0	3	0.0%
Poinsett	9	26	0.5%	0	6	0.1%
Polk	0	18	0.2%	0	2	0.0%
Pope	39	114	2.1%	3	27	0.4%
Prairie	4	8	0.2%	0	2	0.0%
Pulaski	721	294	14.0%	41	42	1.1%
Randolph	2	37	0.5%	0	3	0.0%
St Francis	56	15	1.0%	0	2	0.0%
Saline	31	117	2.0%	2	14	0.2%
Scott	0	30	0.4%	0	1	0.0%
Searcy	0	9	0.1%	0	2	0.0%
Sebastian	149	395	7.5%	17	68	1.2%
Sevier	8	33	0.6%	1	18	0.3%
Sharp	0	14	0.2%	0	0	0.0%
Stone	0	28	0.4%	0	3	0.0%
Union	83	29	1.5%	4	0	0.1%
Van Buren	2	17	0.3%	0	6	0.1%
Washington	89	427	7.1%	7	72	1.1%
White	15	119	1.8%	3	20	0.3%
Woodruff	0	3	0.0%	0	0	0.0%
Yell	4	28	0.4%	0	0	0.0%
Inter. St. Comp.	0	0	0.0%	0	0	0.0%
Unknown	2	1	0.0%	0	0	0.0%

Males = 6,491 Females = 772 Total Intakes = 7,263

Average County Jail Backup - 1,613
Average County 309 Contract - 298

Directory fy 11

Ray Hobbs, Director (870) 267-6200
 Jada Lawrence, Assistant to the Director
 Jan Scussel, Staff Attorney
 Raymond Naylor, Administrator, Internal Affairs
 Mike Wynn, Internal Auditor

Institutions

Larry May, Chief Deputy Director (870) 267-6300
 Roy Agee, Administrator, Classification
 John Kleiner, Coordinator, Emergency Preparedness
 Lt. Troy Moore, Supervisor, K-9 Drug/Contraband
 Jerry Campbell, Administrator, Industry
 Mark McCown, Administrator, Agriculture

Grant Harris, Assistant Director (870) 267-6215
 Danny Hefflin, Coordinator, Transportation
 Sherry Glover, Coordinator, Drug Testing

Public Services Division

Dina Tyler, Assistant Director
 George Brewer, Administrator, Research and Planning
 Brenda Wilson, Analyst, Research and Planning
 Shea Wilson, Administrator, Communications
 Bill Watson, Public Affairs
 Bobby Smith, Coordinator, Policies
 Ida Works, Constituent Services
 Dennice Alexander, Administrator, Inmate Library
 Vacant, Coordinator, Volunteer Services

Health and Correctional Programs

Wendy Kelley, Deputy Director (870) 267-6360
 Rory Griffin, Administrator, Medical Services
 Bob Parker, Administrator, Mental Health Services
 Roger Cameron, Coordinator, Alcohol & Drug Treatment
 Mark Wheeler, Administrator, Religious Services
 Sheri Flynn, Administrator, Sex Offender Assessment
 Bernstein Farris, Coordinator, Pre-Release
 Tiffanye Compton, Coordinator, Inmate Grievance
 Sandra Kennedy, Coordinator, Accreditation

Institutional Operations

Marvin Evans, Deputy Director (870) 267-6303
 Bill Terry, Coordinator, Act 309 Program
 Mary Jones, Coordinator, Vocational Education

Administrative Services

Sheila Sharp, Deputy Director (870) 267-6240
 Stacia Wood-Lenderman, Administrator, Human Resources
 Kay Killen, Administrator, Warehouse Operations
 Mike Carraway, Administrator, Fiscal Affairs
 Jeff Jerry, Administrator, Accounting Control, Banking
 Rick Norton, Administrator, Accounting Operations
 Rhonda Westerman, Administrator, Information Systems
 Teresa Funderburg, Administrator, Procurement

Construction/Maintenance

Leon Starks, Assistant Director (870) 267-6625
 Chris Aschraft, Coordinator, Maintenance
 Robert Leggett, Coordinator, Construction
 Lynn Roberts, Coordinator, Construction/Maintenance

Correction School System

Charles Allen, Ph.D., Chief Adm. Officer (870) 267-6725
 8000 Correction Circle, Pine Bluff, AR 71603

Riverside Vo-Tech School
Joe Kelnhofer, Director (870) 267-6903
 8000 Correction Circle, Pine Bluff, AR 71603

AR Correctional School
Dubs Byers, Superintendent (870) 267-6736
 8000 Correction Circle, Pine Bluff, AR 71603

Facilities
 Benton Unit (501) 315-2252
Randy Watson, Warden
 6701 Hwy. 67, Benton, AR 72015-8488

Cummins Unit (870) 850-8899
Gaylon Lay, Warden
 P.O. Box 500, Grady, AR 71644-0500

Delta Regional Unit (870) 538-2000
Mark Cashion, Warden
 880 East Gaines, Dermott, AR 71638-9505

Diagnostic Unit (870) 267-6410
Kay Howell, Warden
 7500 Correction Circle, Pine Bluff, AR 71603-1498

East Arkansas Regional Unit (870) 295-4700
Danny Burl, Warden
 P.O. Box 180, Brickeys, AR 72320-0180

Grimes Unit (870) 523-8302
John Maples, Jr., Warden
 300 Corrections Drive, Newport, AR 72112-33493

J. Aaron Hawkins Sr. Center (501) 897-1195
Greg Harmon, Warden
 P.O. Box 1010, Wrightsville, AR 72183-1010

Randall L. Williams Correctional Facility (870) 267-6800
Kay Howell, Warden
 7206 West 7th Ave., Pine Bluff, AR 71603

Maximum Security Unit (501) 842-3800
Billy Straughn, Warden
 2501 State Farm Road, Tucker, AR 72168-8713

McPherson Unit (Women's Unit) (870) 523-2639
John Maples, Jr., Warden
 302 Corrections Drive, Newport, AR 72112-33493

Mississippi County Work Release (870) 658-2214
Joe Porchia, Supervisor
 P.O. Box 10, Luxora, AR 72358-0010

North Central Unit (870) 297-4311
David White, Warden
 #10 Prison Circle, Calico Rock, AR 72519-0300

Northwest AR Work Release Center (479) 756-2037
James Brooks, Supervisor
 200 East Price Ave., Springdale, AR 72764-1352

Ouachita River Correctional Unit (501) 467-3400
Dale Reed, Warden
 P.O. Box 1630, Malvern, AR 72104

Pine Bluff Unit (870) 267-6510
Kay Howell, Warden
 890 Freeline Dr., Pine Bluff, AR 71603 -1498

Texarkana Regional Correction Center (870) 779-3939
Larry Cauley, Supervisor
 305 East 5th Street, Texarkana, AR 75501

Tucker Unit (501) 842-2519
Stephen Williams, Warden
 P.O. Box 240, Tucker, AR 72168-0240

Varner/ Varner Supermax Unit (870) 575-1800
Jimmy Banks, Warden
 P.O. Box 600, Grady, AR 71644-0600

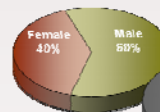
Wrightsville Unit (501) 897-5806
Greg Harmon, Warden
 P.O. Box 1000, Wrightsville, AR 72183-1000

Arkansas Board of Corrections
P.O. Box 20550
Pine Bluff, AR 71612
(870) 267- 6754

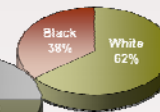
Benny Magness, Chair
Dr. Mary Parker, Vice-Chair
Janis Walmsley, Secretary
John Felts, Member
Drew Alan Baker, Member
Bobby Glover, Member
Tyrone Broomfield, Member
Mark Colbert, Compliance Attorney
Shari Gray, Admin. Assistant

Personnel

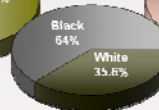
Gender



Females



Males



Personnel Ethnic Breakdown

	Male	Female	Total
White	1,546	597	2,143
Black	854	978	1,832
Hispanic	9	2	11
Others	5	1	6
Total	2,414	1,578	3,992

Administration Building/Central Office (870) 267-6999
 6814 Princeton Pike, Pine Bluff, AR 71602

Administrative Annex East Building (870) 850-8510
 2403 East Harding, Pine Bluff, AR 71601

See our website for additional information
<http://www.adc.arkansas.gov>