

2
0
1
0

Arkansas Recidivism Study

Tiffanye Compton, M. S., Research & Planning Administrator
Jacob Laan, M.S./Ph.D. Student/Research Analyst
Darrell McHenry, Administrative Analyst

2013

Highlights/Summary

1. Recidivism is the act of reengaging in criminal offending despite having been incarcerated. The Arkansas Department of Correction (ADC) Recidivism Study reviews all inmates released three years earlier (2010) to determine how many of them were re-incarcerated (as a Recidivist) within three years following their release. This current study shows that the ADC Overall Recidivism Rate increased from 41.6% of those released during CY2009 to 43.2% of those released during CY2010, an increase of 1.6 percentage points.
2. The return of those released in 2010 increased from 9.2% during the first six months of their release to 43.2% during three years of their release, a 34.0% overall increase (Table 1, pg. 2).
3. ADC Inmates are released either on parole or they have discharged (completed their entire sentence). The Recidivism Rate for inmates released on parole was 43.8% over three years (2010-2013) which is significantly higher than the 22.5% Recidivism Rate for inmates who discharged their sentence (Table 2, pg. 3).
4. Parole Violators with New Sentences within three-year post release account for 27.4% of the recidivists and Parole Violators with Technical Violations account for 15.3%, while Discharges with New Sentences only accounted for 0.5%.
5. 2010 Recidivism Rates for male offenders show a three-year return rate of 44.7% as compared to 31.1% for females (Table 4, pg. 6).
6. The 2010 Recidivism Rate demonstrates that 44.5% of whites and 43.3% of blacks returned to prison. The Recidivism Rates for whites and blacks increased by 2.5% points and 0.6% points respectively from the previous year (Table 5, pg. 9).
7. For 2010 releases within a three-year post release and a return to prison, both males and females within the cohort age range of 25-34 constituted the highest percentage of returns (Table 6 & 7 pgs. 9 & 10).
8. Recidivism rates are shown by offense category and crime within that category in (Table 8 on pages 11 & 12.)

Research and Planning, Arkansas Department of Correction
P. O. Box 8707, Pine Bluff, AR 71602, Telephone (870) 267-6335

Ray Hobbs, Director

Wendy Kelley, Chief Deputy Director



Arkansas' Recidivism Study (Addendum)

The **2010** Recidivism research is an addendum to the original **1997-1999** study produced in 2003 and to the addendums through **2009**, produced in prior years. This addendum was prepared by the Arkansas Department of Correction's Research and Planning Division. The addendum reviews the return rates of inmates released from custody in **CY2010**, as compared to prior years. The data for this research was obtained from the ADC electronic Offender Management Information System (eOMIS). If an individual was released **January 1, 2010 through December 31, 2010**, the data provided reflect returns for a full three-year post release. All charts and tables reflect a three-year post release review and are utilized strictly for clarity and ease to the reader.

The study is categorized into return rates of six (6) months, one (1) year, and three (3) years. As with the **2009** addendum regarding a three-year post release of inmates produced in **2012**, the ADC Research and Planning Section will continue to study, track and update trends in release/return annually.

Overall Recidivism Rates

As demonstrated, Table 1 shows the overall ADC **2010** recidivism rates. The post-release period consists of six months, one year and three years, from **2001** through **2010**. In **2010**, there was a total of **6,198** inmates released from ADC. Within six months of release, **9.2%** returned to prison. Within one year **19.5%** inmates returned and within three years **43.2%** had returned to prison. ADC's recidivism rate, averaged for the last ten years, is **44.2%**.

**In all tables, the "number of releases" is the number of unduplicated releases in a given year used to generate recidivism rates. Table 1 does not specify the type of return. It demonstrates an overall return rate, regardless of reason.*

Table 1

Overall Recidivism Rates								
Release	Total Number	% Returned	# Returned	% Returned	# Returned	% Returned	# Returned	Total %
Year	Releases	6 Months	6 Months	1 Year	1 Year	3 Years	3 Years	Returns
2001	5962	15.9%	948	29.7%	1771	51.4%	3066	51.4%
2002	6015	15.1%	911	28.5%	1716	49.4%	2969	49.4%
2003	6135	12.9%	792	25.9%	1586	47.4%	2905	47.4%
2004	6244	11.2%	698	22.1%	1377	44.4%	2772	44.4%
2005	5657	7.4%	418	18.3%	1036	41.4%	2344	41.4%
2006	5505	6.4%	355	17.1%	943	37.4%	2060	37.4%
2007	5783	6.2%	359	15.2%	881	40.3%	2330	40.3%
2008	6305	7.5%	475	20.2%	1275	44.9%	2831	44.9%
2009	6585	8.3%	547	20.4%	1343	41.6%	2742	41.6%
2010	6198	9.2%	572	19.5%	1213	43.2%	2680	43.3%
Ten Year-	6,039	10.7%	608	21.8%	1314	44.2%	2670	44.2%

Recidivism Rates: Release Type

Table 2 demonstrates recidivism rate by type of release. ADC releases inmates by parole with supervision, which is granted by the Parole Board, or by discharge (max flat of sentence). In **2010**, there were **6,047** released by regular parole and **151** inmates discharged. Results indicate that within six months of release in **2010**, **568** inmates or **9.4%** of the inmates released on parole had returned, while only **4** or **2.6%** of the inmates discharged returned with a new sentence. Total returns of parole releases from ADC in **2010** show a **43.8%** return rate, while discharges reflects a **22.5%** return rate within three-years.

Table 2

Recidivism Rates By Type of Release-2010								
Year	Type of Release	Total Releases	6 Mths Returns	% Returns	1 Year Returns	% Returns	3 Years Returns	% Returns
2001	Paroled - Regular	5,778	947	16.4%	1,762	30.5%	3,042	52.6%
	Discharge	184	1	0.5%	9	4.9%	24	13.0%
2002	Paroled - Regular	5,841	910	15.6%	1,707	29.2%	2,938	50.3%
	Discharge	174	1	0.6%	9	5.2%	31	17.8%
2003	Paroled - Regular	5,958	788	13.2%	1,577	26.5%	2,861	48.0%
	Discharge	177	4	2.3%	9	5.1%	43	24.3%
2004	Paroled - Regular	6,075	693	11.4%	1,368	22.5%	2,735	45.0%
	Discharge	169	5	3.0%	9	5.3%	37	21.9%
2005	Paroled - Regular	5,505	413	7.5%	1,025	18.6%	2,317	42.1%
	Discharge	152	5	3.3%	11	7.2%	27	17.8%
2006	Paroled - Regular	5,358	350	6.5%	931	17.4%	2,020	37.7%
	Discharge	147	5	3.4%	12	8.2%	40	27.2%
2007	Paroled - Regular	5,623	357	6.3%	872	15.5%	2,293	40.8%
	Discharge	160	2	1.3%	9	5.6%	37	23.1%
2008	Paroled - Regular	6,160	469	7.6%	1,262	20.5%	2,808	45.6%
	Discharge	145	6	4.1%	13	9.0%	23	15.9%
2009	Paroled - Regular	6,421	543	8.5%	1329	20.7%	2694	42.0%
	Discharge	164	4	2.4%	15	9.1%	34	20.7%
2010	Paroled- Regular	6,047	568	9.4%	1202	19.9%	2646	43.8%
	Discharge	151	4	2.6%	11	7.3%	34	22.5%
Total Paroled - Regular		58,766	6,038	10.3%	13,035	22.2%	26,354	44.8%
Total Discharged		1623	37	2.3%	107	6.6%	330	20.3%

Table 3.

Recidivism Of Parolees And Discharges-2010								
Year	Total	Type of	6 Mths	%	1 Year	%	3 Years	%
	Releases	Return	Returns	Returns	Returns	Returns	Returns	Returns
2001	5962	PV/New Sentence	283	4.7%	540	9.1%	913	15.3%
		PV/Technical	663	11.1%	1211	20.3%	1972	33.1%
		Discharge - Reconviction	2	0.0%	20	0.3%	181	3.0%
2002	6015	PV/New Sentence	793	13.2%	1516	25.2%	2549	42.4%
		PV/Technical	113	1.9%	174	2.9%	215	3.6%
		Discharge - Reconviction	5	0.1%	26	0.4%	205	3.4%
2003	6135	PV/New Sentence	785	12.8%	1558	25.4%	2668	43.5%
		Discharge - Reconviction	7	0.1%	28	0.5%	237	3.9%
2004	6244	PV/New Sentence	686	11.0%	1341	21.5%	2535	40.6%
		Discharge - Reconviction	12	0.2%	36	0.6%	237	3.8%
2005	5657	PV/New Sentence	407	7.2%	999	17.7%	2120	37.5%
		Discharge - Reconviction	11	0.2%	37	0.7%	224	4.0%
2006	5505	PV/New Sentence	346	6.3%	918	16.7%	1868	33.9%
		Discharge - Reconviction	9	0.2%	25	0.5%	192	3.5%
2007	5783	PV/New Sentence	352	6.1%	850	14.7%	1708	29.5%
		PV/Technical	1	0.0%	10	0.2%	454	7.9%
		Discharge - Reconviction	6	0.1%	21	0.4%	168	2.9%
2008	6305	PV/New Sentence	345	5.5%	818	13.0%	1732	27.5%
		PV/Technical	122	1.9%	427	6.8%	925	14.7%
		Discharge - Reconviction	8	0.1%	30	0.5%	174	2.8%
2009	6585	PV/New Sentence	403	6.1%	911	13.8%	1665	25.3%
		PV/Technical	138	2.1%	404	6.1%	916	13.9%
		Discharge - Reconviction	6	0.1%	28	0.4%	161	2.4%
2010	6198	PV/New Sentence	445	7.2%	835	13.5%	1700	27.4%
		PV/Technical	123	2.0%	367	5.9%	946	15.3%
		Discharge-Reconviction	4	0.1%	11	0.2%	34	0.5%

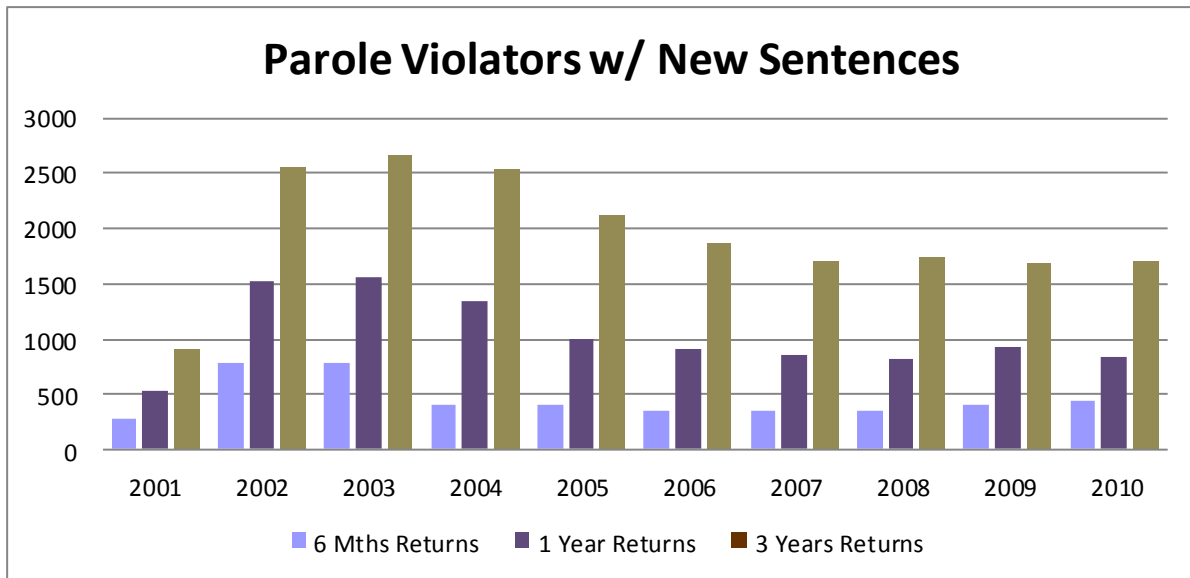
Recidivism Rates: (Return Types) Parolees and Discharges

Table 3 and Figures 3, 3-1 and 3-2 show inmates that return to prison for parole violations with a new sentence (s); or parole violators returning with a technical violation (s); and discharges (reconvicted inmates) that returned to prison as a new commitment with a new sentence. Although the number of technical violators returned to ADC has decreased since the opening in 2003 of the Omega Technical Parole Violators Center, the number returned in **2010** has increased from its lowest number in **2007**. Even though a new conviction might also have a technical violation attached, the new conviction on most cases will supersede the technical violation, making the new conviction the primary reason for returning to prison.

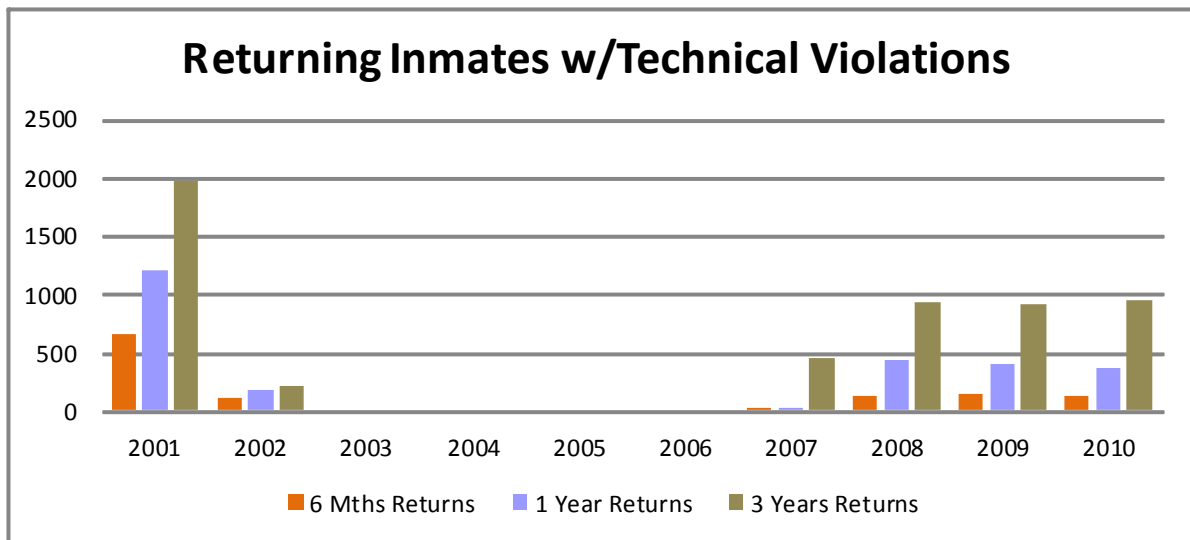
*Previously, Discharge-Reconviction was not specific to only include Discharge Inmates. CY2010 Releases only includes those Inmates who were specifically Discharged.



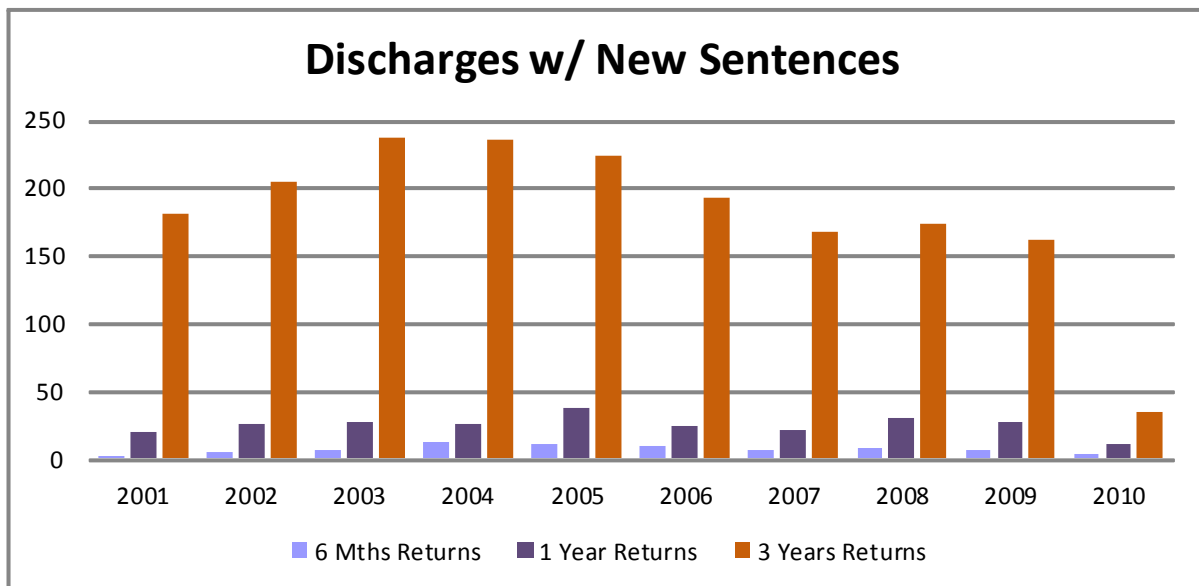
3. Fig. 1



3. Fig. 2



3. Fig. 3



Recidivism Rates: Gender

Table 4 , 4-1, 4-2 exhibits recidivism rates by gender. Across the years, male Inmates have a higher recidivism rate when compared to female Inmates. In **2010**, 44.7% of male Inmates released returned to the ADC versus 31.1% of the female Inmates released. From six months to one year, data demonstrated a constant return rate for both males and females; however, by the end of the third year there was a larger percentage of males returning to prison compared to females.

Table 4

Recidivism Rates By Gender									
Year	Gender	Total	6 month	Total %	1 Year	Total %	3 Years	Total %	Total Inmates
		Releases	Return	Returns	Returns	Returns	Returns	Returns	Not Returning
2001	Female	625	81	13.0%	140	22.4%	260	41.6%	365
	Male	5,337	867	16.2%	1,631	30.6%	2,806	52.6%	2,531
2002	Female	594	67	11.2%	134	22.6%	242	40.7%	320
	Male	5,421	844	15.6%	1,582	29.2%	2,727	50.3%	2,426
2003	Female	616	54	8.8%	111	18.0%	215	34.9%	401
	Male	5,519	738	13.4%	1,475	26.7%	2,690	48.7%	2,829
2004	Female	551	31	5.6%	56	10.2%	139	25.2%	413
	Male	5,693	667	11.8%	1,321	23.2%	2,633	46.2%	3,060
2005	Female	534	15	2.8%	44	8.2%	123	23.0%	411
	Male	5,124	403	7.9%	992	19.4%	2,221	43.3%	2,903
2006	Female	614	18	2.9%	57	9.3%	137	22.3%	477
	Male	4,891	337	6.9%	886	18.1%	1,923	39.3%	2,968
2007	Female	675	21	3.1%	53	7.9%	158	23.4%	517
	Male	5,783	338	5.8%	828	14.3%	2,172	37.6%	3,611
2008	Female	735	27	3.7%	87	11.8%	211	28.7%	524
	Male	5,570	448	5.0%	1,188	21.3%	2,620	47.0%	2,950
2009	Female	755	41	5.4%	99	13.1%	210	27.8%	545
	Male	5,830	506	8.7%	1245	21.4%	2533	43.4%	3297
2010	Female	687	32	4.7%	74	10.8%	214	31.1	473
	Male	5,511	540	9.8%	1139	20.7%	2,466	44.7	3,045

Figure 4

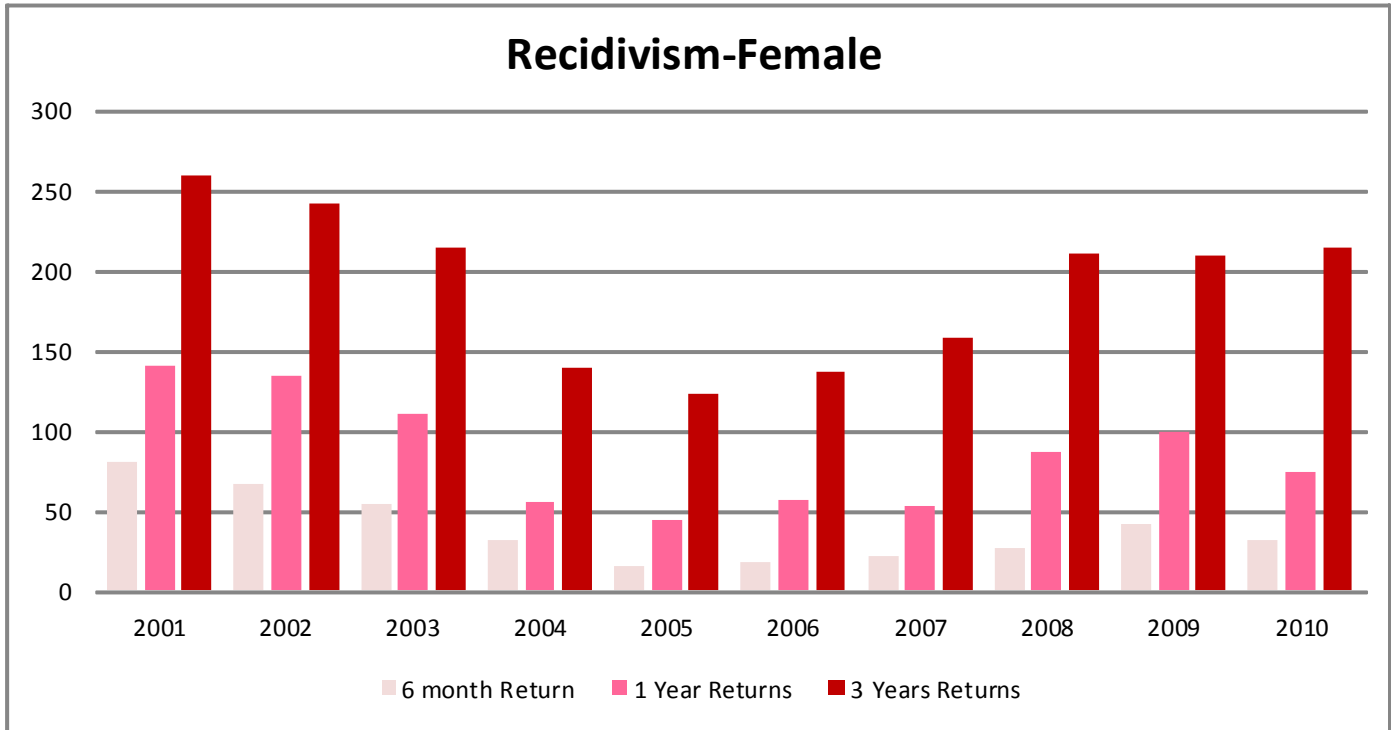


Figure 4.1

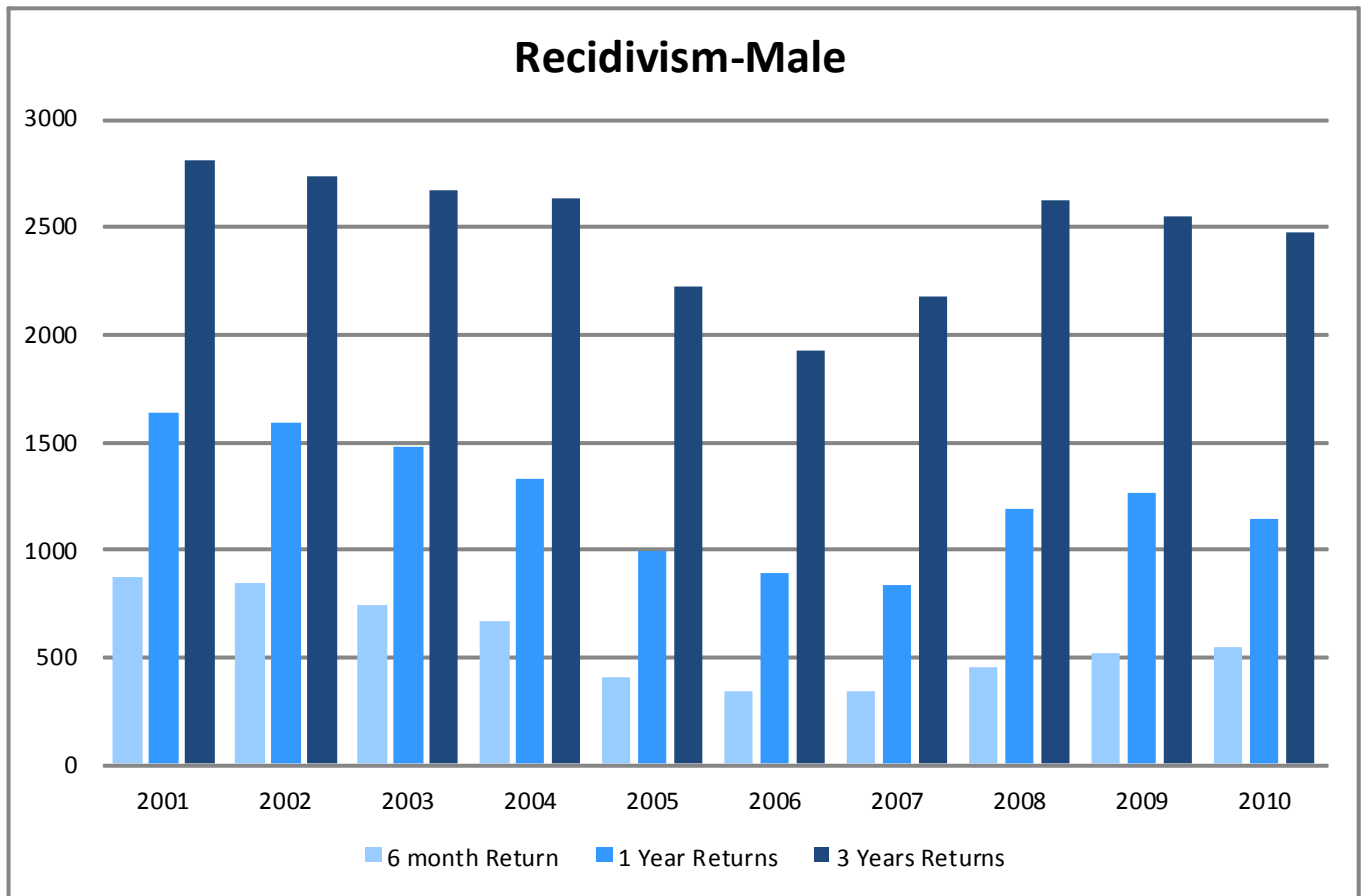


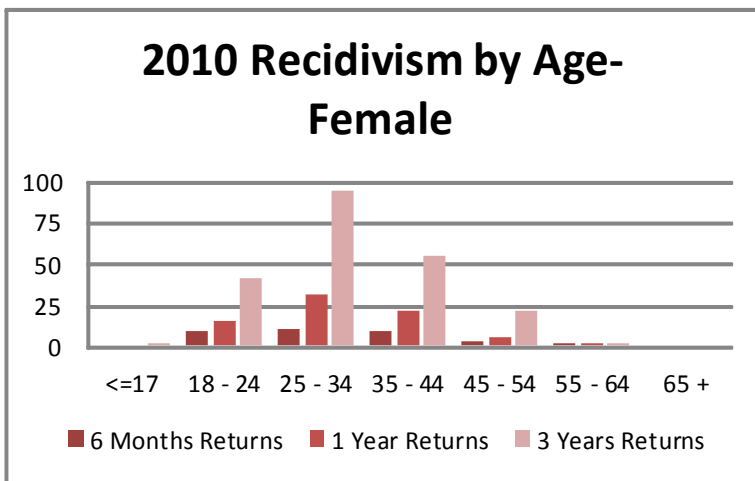
Table 5

2010 Recidivism Rates By Race								
Year	Race	Total Releases	6 Month Returns	% Returns	1 Year Returns	% Returns	3 Year Returns	% Returns
2001	Black	2,718	463	17.0%	839	30.9%	1,476	54.3%
	Hispanic	64	3	4.7%	10	15.6%	18	28.1%
	Other	45	3	6.7%	4	8.9%	8	17.8%
	White	3,135	479	15.3%	918	29.3%	1,564	49.9%
2002	Black	2,618	408	15.6%	741	28.3%	1,335	51.0%
	Hispanic	75	5	6.7%	9	12.0%	13	17.3%
	Other	30	0	0.0%	3	10.0%	7	23.3%
	White	3,292	497	15.1%	962	29.2%	1,613	49.0%
2003	Black	2,768	321	11.6%	691	25.0%	1,349	48.7%
	Hispanic	50	4	8.0%	11	22.0%	20	40.0%
	Other	13	0	0.0%	1	7.7%	5	38.5%
	White	3,304	467	14.1%	883	26.7%	1,531	46.3%
2004	Black	2,711	255	9.4%	573	21.1%	1,260	46.5%
	Hispanic	64	10	15.6%	14	21.9%	24	37.5%
	Other	19	1	5.3%	4	21.1%	5	26.3%
	White	3,450	432	12.5%	786	22.8%	1,483	43.0%
2005	Black	2,285	167	7.3%	455	19.9%	1,064	46.6%
	Hispanic	70	6	8.6%	11	15.7%	22	31.4%
	Other	30	4	13.3%	7	23.3%	10	33.3%
	White	3,273	241	7.4%	563	17.2%	1,248	38.1%
2006	Black	2,304	144	6.3%	396	17.2%	925	40.1%
	Hispanic	115	10	8.7%	12	10.4%	29	25.2%
	Other	22	1	4.5%	2	9.1%	4	18.2%
	White	3,064	200	6.5%	533	17.4%	1,102	36.0%
2007	Black	2,374	159	6.7%	403	17.0%	1,057	44.5%
	Hispanic	155	12	7.7%	18	11.6%	34	21.9%
	Other	38	3	7.9%	7	18.4%	16	42.1%
	White	3,216	185	5.8%	453	14.1%	1,223	38.0%
2008	Black	2,607	200	7.7%	535	20.5%	1,235	47.4%
	Hispanic	247	11	4.5%	26	10.5%	53	21.5%
	Other	32	5	15.6%	12	37.5%	19	59.4%
	White	3,419	259	7.6%	702	20.5%	1,524	44.6%
2009	Black	2,641	207	7.8%	509	19.3%	1128	42.7%
	Hispanic	213	15	7.0%	27	12.7%	41	19.2%
	Other	37	5	13.5%	12	32.4%	20	54.1%
	White	3694	319	8.6%	795	21.5%	1553	42.0%
2010	Black	2,540	205	8.1%	464	18.3%	1101	43.3%
	Hispanic	210	17	8.1%	29	13.8%	46	21.9%
	Other	46	5	10.7%	10	21.7%	20	43.5%
	White	3,402	345	10.1%	711	20.9%	1513	44.5%

Recidivism Rates: Race

In Table 5 Recidivism Rates were generated by race for **2010** and encompasses time frames of six months, one year and three-year post release. Recidivism rates were based on six racial groups. Within the ADC, the population primarily consists of Caucasian and African-American racial cohorts, while only a small percentage consists of Hispanic and other categories. For this report, the category of Caucasian is denoted as White; the African-American category is denoted as Black; the Hispanic Category consists of Cuban, Mexican and Hispanic racial designations; and the Other category incorporates both Asian and Native Americans. The **2010** Recidivism Study addendum incorporates Caucasian, African-American, Hispanic, and Other racial designations to demonstrate recidivism rates by race as provided in Table 5. In **2010**, **3,402** Caucasian inmates were released and within three years **1,513** or **44.5%** returned to prison, while **2,540** African-American inmates were released with **1,101** or **43.3%** returning to prison within three years. For **2010**, the Recidivism Rate for Caucasian inmates is marginally higher than for African-Americans (see Table 5).

Table 6



Recidivism Rate: Age

Age shows to be related to recidivism within the ADC. There was considerable variation between age groups among recidivists (see Tables 6, 6.1 & 7). For both males and females, the age cohort of 25-34 was the highest frequency age group among recidivists (See Table 7).



Table 6.1

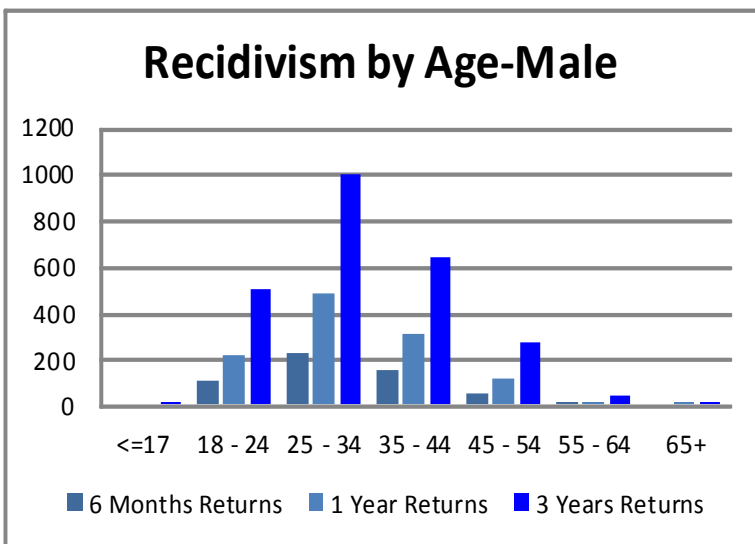


Table 7

Recidivism by Age (Female)							
Gender	AGE	Total Releases	6 Months	1 Year	3 Years	% of Total	% of Age Group
			Returns	Returns	Returns	Returns	Returned
Female	<=17	1	0	0	1	0.47%	100.0%
	18 - 24	90	9	15	41	19.16%	45.6%
	25 - 34	263	10	31	94	43.93%	35.7%
	35 - 44	200	9	21	55	25.7%	27.5%
	45 - 54	116	3	5	21	9.81%	18.1%
	55 - 64	16	1	2	2	.93%	12.5%
	65+	1	0	0	0	0.0%	0.0%
	Total	687	32	74	214	100%	

Recidivism by Age (Male)							
Gender	AGE	Total Releases	6 Months Returns	1 Year Returns	3 Years Returns	Total % Returns	% of Age Group Returned
Male	<=17	2	0	0	2	0.8%	100.00%
	18 - 24	888	110	215	500	20.28%	56.3%
	25 - 34	2143	223	485	1000	40.55%	46.7%
	35 - 44	1451	151	308	644	26.12%	44.4%
	45 - 54	795	46	113	275	11.15%	34.6%
	55 - 64	208	10	17	39	1.58%	18.8%
	65+	24	0	1	6	.24%	25.0%
	Total	5511	540	1139	2466	100%	

Recidivism Rates: Offense

Table 8 reflects the return rates as a result of the type of offense for a selected period of time. A variety of offenses were analyzed in order to understand the breadth and depth of recidivism rates by offense and the return to prison within the three-year time frame. For clarity, Table 8 denotes the offense category, the actual number of releases/returns for 2010, and the actual numbers and percentages of returns within three years for each category.

**Table 8
Recidivism Rates By Offense Category-2010**

Offense Category	No.Releases	Ret w/in 3 yrs	% Returned
0101 - Capital Murder	3	0	0.0%
0102 - Murder-1st Degree	39	16	41.0%
0103 - Murder-2nd Degree	48	15	31.3%
0104 - Manslaughter	35	11	31.4%
0105 - Negligent Homicide	17	3	17.6%
0201 - Kidnapping	38	20	52.6%
0202 - False Imprisonment-1st Degree	35	15	42.9%
0301 - Robbery	443	251	56.7%
0302 - Aggravated Robbery	125	52	41.6%
0401 - Battery-1st Degree	140	51	36.4%
0402 - Battery-2nd Degree	385	195	50.6%
0403 - Aggravated Assault	213	109	51.2%
0404 - Terroristic Threatening	161	80	49.7%
0405 - Terroristic Act	17	5	29.4%
0406 - Agg. Assault On Corr. Employee	4	3	75.0%
0407 - Battery 3rd Deg. (Enhanced)	2	1	50.0%
0408 - Intro. Cont. Subs. Body/Another	2	1	50.0%
0416 - Offense Com. Presence of Child	2	1	50.0%
0424 - Falsely Making Terror Threat	1	0	0.0%
0501 - Rape	57	23	40.4%
0502 - Carnal Abuse-1st Degree	2	0	0.0%
0504 - Sexual Abuse-1st Degree	32	21	65.6%
0505 - Violation Of A Minor-1st Dg	1	0	0.0%
0510 - Carnal Abuse-3rd Degree	3	2	66.7%
0512 - Indecent Exposure	1	1	100.0%
0513 - Sexual Assault	152	53	34.9%
0518 - Reg. Sex offend near cert. facl	3	1	33.3%
0634 - Violation of Protect Order	1	0	0.0%
0658 - Residential Burglary	571	342	59.9%
0659 - Commercial Burglary	259	139	53.7%
0701 - Incest	5	1	20.0%
0702 - Domestic Battering-1st Degree	14	6	42.9%
0703 - Domestic Battering-2nd Degree	45	15	33.3%
0704 - Agg. Aslt On Family/Household	18	7	38.9%
0705 - Non-Support	43	11	25.6%
0707 - Interference With Custody	1	0	0.0%
0708 - Domestic Battering-3rd Degree	79	38	48.1%
0801 - Endanger Welfare Minor-1st Dg	14	5	35.7%
0803 - Permit Child Abuse	1	0	0.0%
0804- Engage Child in Sex Expct. Condt.	1	0	0.0%
0805 - Trans, Distr.Mat. Deplctg Chil	3	1	33.3%
0809 - Solicit Money/Prop From Incomp.	1	0	0.0%
0810 - Sexual Solicitation Of A Child	3	2	66.7%
0813 - Dist/Poss/View Sex Explicit	8	2	25.0%
0814 - Computer Child Pornography	12	4	33.3%
0828 - Expose Child to Chem Substance	2	1	50.0%
0830 - Sexual Indecency With A Child	14	7	50.0%
0901 - Abuse Of Adults	2	0	0.0%
1001 - Theft Of Property	655	308	47.2%
1004 - Theft By Receiving	223	106	47.5%
1005 - Theft Of Leased Property	2	1	50.0%
1006 - Theft Of Public Benefits	5	2	40.0%
1046 - Internet Stalk.- Child Fel. C	5	3	60.0%
1048 - Internet Stalk.- Child Fel. B	13	4	30.8%
1066 - Theft of Scrap Metal	3	1	33.3%

**Table 8—Continued
Recidivism Rates By Offense Category-2010**

Offense Category	No. Releases	Ret w/in 3 yrs	% Returned
1075 - Reg. Sex Off. Pro. Entering School Campus	1	0	0.0%
1101 - Forgery	217	104	47.9%
1102 - Defrauding Secured Creditors	1	0	0.0%
1104 - Fraudulent Use Of Credit Card	26	10	38.5%
1113 - Hot Check Violation	87	27	31.0%
1118 - Financial Identity Fraud	3	1	33.3%
1202 - Impair Oper. Of Vital Pub.Facil	2	1	50.0%
1203 - Arson	18	7	38.9%
1204 - Reckless Burning	1	0	0.0%
1205 - Criminal Mischief-1st Degree	27	10	37.0%
1207 - Criminal Mischief 2nd Degree	2	1	50.0%
1301 - Burglary	5	2	40.0%
1302 - Breaking And Entering	76	34	44.7%
1601 - Perjury	1	0	0.0%
1604 - Tampering With Physical Evid.	16	7	43.8%
1612 - Retaliation Against Informant	3	1	33.3%
1701 - Interfering with Law Enf. Off.	1	1	100.0%
1702- Hindering Apprehension or Proc	10	2	20.0%
1706 - Escape-2nd Degree	4	2	50.0%
1711 - Furnishing Prohib. Articles	16	13	81.3%
1712 - Failure To Appear	86	41	47.7%
1713 - Fleeing	39	17	43.6%
1715 - Filing A False Report	7	2	28.6%
1720 - Fail To Register Child/Sex Off	66	23	34.8%
1901- Traffic In Illegal Food Coupon	1	0	0.0%
2001 - Abuse of a Corpse	2	1	50.0%
2201- Fail. To Keep Records Dist. Drg	86	16	18.6%
2202 - Advertise Drug Paraphernalia	445	140	31.5%
2203 - Manu/Delv/Poss Control Subs.	800	228	28.6%
2205 - Use Of Communication Facility	1	1	100.0%
2214 - Poss W/I To Manufacture	4	2	50.0%
2215 - Possession Of Ephedrine	3	1	33.3%
2300 - DWI Offenses	3	2	66.7%
2301 - Viol Of Omb DWI Act 4th Offense	49	6	12.2%
2707 - Stalking	1	0	0.0%
2901 - Poss. Firearm Certain Person	37	12	32.4%
2902 - Criminal Use Prohibited Weapon	1	0	0.0%
2904 - Criminal Poss. Of Explosives	1	0	0.0%
2907 - Poss. Of Firearm - School	1	0	0.0%
2912- Possession of Defaced Firearm	1	0	0.0%
3001 - Criminal Attempt	40	13	32.6%
3003 - Criminal Conspiracy	27	9	33.3%
3513 - Unlawful Use/aAccess W/Computer	1	0	0.0%
6503 - Fail To Stop Acc. W/Inj/Death	5	1	20.0%
8001 - Discharge Firearm From Vehicle	3	1	33.3%
8002- Engage In Viol. Crim. Group Act	2	2	100.0%
8004- Simul. Poss of Drugs/Firearm	6	2	33.3%
Total	6198	2680	43.2%