



Vision Statement: To be an honorable and professional organization through ethical and innovative leadership at all levels, providing cost efficient, superior correctional services that return productive people to the community.

Director's message:

While FY09 saw a decrease in the monthly growth rate from FY08, our inmate population continues to climb, and we continue to back log inmates in the county jails. The monthly growth rate decreased from 65 per month in FY08 to 27 per month in FY09, but when you are at capacity any growth strains the system. A national report by the Pew Center on the States determined that in Arkansas one out of every 29 adults is under some sort of correctional supervision. Fortunately, the bulk of this population has been diverted from the Department of Correction and is serving probated sentences. Unfortunately, as I indicated last year, I believe that without a significant shift in sentencing laws and practices of the local courts, an upward trend in our population will continue.

Once again I want to commend the employees of the Department of Correction for their continued professional service and dedication to this agency and the State of Arkansas as our job becomes increasingly more difficult. We have continued to address the increasing bed space needs by opening 200 beds at McPherson in August of 08 and 100 beds at Ouachita River in May of 09. Along with increased numbers comes increased demands on security. We are expanding our biometric entrance monitoring to include staff, and we are continuing to address the issue of cell phones and other wireless communication devices.

The Department had the opportunity to work with a number of federal, state, and local agencies and associations during the year. With federal funding and use of the eOMIS data base, an Electronic Sex Offender Management system (eSOMA) was created by the Department of Correction, the Department of Community Correction, and the Arkansas Crime Information Center to enhance the state's Sex Offender Registry Program. Working in partnership with the Department of Workforce Education, the American Correctional Association, and the National Partnership for Careers in Law, Public Safety, Corrections and Security, the Department of Correction initiated the Correctional Officer Provisional Certification program for high school and community college students. The Department of Correction also worked closely with the Old State House Museum to take steps to preserve historical artifacts and documents of the penitentiary. The results of this effort are on display at the Old State House Museum's exhibit "Badges, Bandits, and Bars".

The achievements made during the past year were accomplished only through the continued efforts of Arkansas' professional correctional staff. It is on their behalf that I extend our thanks to the Governor, the General Assembly and the Board of Corrections for their support in our efforts to provide Arkansas with the best correctional system possible.

*The Mission Statement of the Arkansas Department of Correction is to:*

- Provide public safety by carrying out the mandates of the courts;
- Provide a safe, humane environment for staff and inmates;
- Provide programs to strengthen the work ethic;
- Provide opportunities for spiritual, mental, and physical growth.

annual report



Sincerely,

Larry B. Norris



Governor - Mike Beebe

# Highlights fy 09

## **eSOMA (Electronic Sex Offender Management of Arkansas)**

Through federal funding by the Bureau of Justice Assistance the Arkansas Department of Correction (ADC), Department of Community Correction (DCC), and the Arkansas Crime Information Center (ACIC) were able to enhance the state's Sex Offender Registry by adding a web application that allows citizens to search for sex offenders within a specified area and register to receive phone and e-mail notifications when a registered sex offender moves into the area.

For convenience, users can log on directly to [www.communitynotification.com/arkansas](http://www.communitynotification.com/arkansas), or be redirected to this site by accessing [www.acic.org](http://www.acic.org) and following the links for the sex offender registry. From there, users can enter any number of addresses for specific locations — such as a home, school, child care center, or park — and register to receive notifications when a sex offender moves within a one-mile radius of the registered address or addresses. Registration is free and confidential.

## **Cellular Telephones**

In response to a situation where a cellular telephone was used to facilitate an escape, the ADC established a policy (AD 09-26) to prohibit the possession or use of mobile/wireless telephones devices by employees or others while within a facility perimeter or while supervising inmates on the grounds of the facility. The seriousness of this issue was also recognized by state legislators. Act 479 of 2009 made the mere possession of a cellular phone or components of a cellular phone by an inmate a Class B felony. Act 479 of 2009 further provided that if an inmate uses a cellular phone to commit or attempt to commit an escape or conduct other felonious activity it becomes a Class A felony.

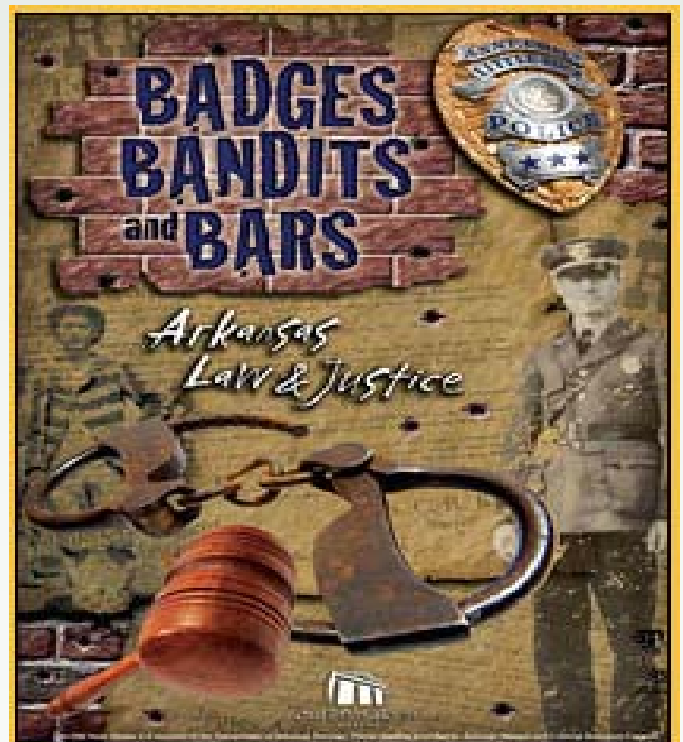
## **PBMS**

This year the ADC began submitting data electronically to the Association of State Correctional Administrator's (ASCA) Performance Based Measuring System (PBMS). Utilizing the established counting rules for the 224 key indicators, data is generated for most measures by

eOMIS and reviewed monthly by unit staff. Approved data is then uploaded to the ASCA website where data from other states is available for comparison. With all state using the same counting rules, the comparisons are more meaningful, and at the close of FY09 there were 24 states entering data. The eOMIS PBMS module that generates the data is also capable of generating comparative reports between facilities of the ADC.

## **ADC's History On View**

A memorandum of understanding between the ADC and the Old State House Museum has resulted in an exhibit of artifacts and photographs being placed on public display in Little Rock. The agreement is a working relationship that will protect, maintain and preserve documents and other artifacts depicting the history of the Department of Correction and is aimed at serving the public purpose of awareness in and support of Arkansas history. The ADC material is being displayed in conjunction with artifacts from the Arkansas State Police in an exhibit called "Badges, Bandits and Bars: Arkansas Law and Justice". The "Badges, Bandits and Bars" exhibit will be on view until March 6, 2011.



# Budget fy 09

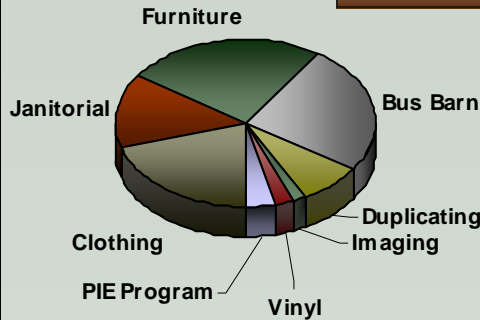
## Construction Expenditures

Cummins Unit, Trustee Barracks	\$2,040,990.50
Cummins Unit, Security Ceiling	20,273.70
Cummins Unit, .Armory	15,372.26
Cummins Unit, Fire House	66,237.13
East AR Unit, Lethal Fence	327,468.40
East AR Unit, Non-Contact Visitation	38,147.55
Delta Unit, Recreation Yard	41,583.43
Grimes Unit, Fuel Station	160,435.59
Grimes Unit, Industry Building	942,746.36
Grimes Unit, Trailer Park	2,284.31
Grimes Unit, Vegetable Cooler	67,250.38
ORCU, Special Needs Unit	6,960,888.18
ORCU, Fuel Station	113,653.30
McPherson Unit, Fence	59,190.85
McPherson Unit, 200 Bed Const.	29,408.76
Wville. Unit, Infirmary	70,815.90
Wville. Unit, Entrance Bldg.	17,545.71
Wville. Unit, ICC Garage	107.00
Wville. Unit, Staff House	81,035.64
Wville. Unit, Heartbeat Detector Bldg.	90,693.25
Wville. Unit, Multi Use Building	24,857.59
Wville. Unit, Industry Building	651,860.34
Tucker Unit, Entrance Building	33,682.95
Tucker Unit, Office	58,499.50
Tucker Max Unit, Chapel	17,007.71
Tucker Max Unit, Recreation Yards	47,360.90
Various Locks & Door Replacement	72,595.20
Diagnostic Unit, VUB Renovations	3,953.80
Various Roof Repairs	411,054.49
Training Academy, BOQ	69,972.40
Hawkins Unit Entrance Building	29,493.73
Central Off. Security Enhancement	16,976.36
Armory, Construction	3,779.89
Varner Unit, Heartbeat Monitor	39,084.04
Admin. East Building, IT Warehouse	61,168.04
<b>Total Expenditures</b>	<b>\$12,687,475.14</b>

## Funding

General Revenue	\$ 277,491,266
Work Release	2,309,091
Agriculture	11,673,876
Industry	8,248,641
<b>Total</b>	<b>\$ 280,135,153</b>

## Industry Revenue



Clothing	\$1,510,049
Janitorial	1,066,352
Furniture	1,860,267
Bus Barn	1,859,506
Duplicating	580,062
Imaging	119,419
Vinyl	157,081
PIE Program	299,164
<b>Total</b>	<b>\$7,451,900</b>

## Inmate Cost Per Inmate

	Per Day	Per Year
1997	36.86	13,453.90
1998	37.40	13,651.00
1999	37.65	13,742.25
2000	39.35	14,362.75
2001	40.79	14,888.35
2002	42.59	16,100.15
2003	44.11	15,545.35
2004	47.32	17,271.80
2005	48.24	17,607.60
2006	52.12	19,023.80
2007	54.82	20,009.30
2008	57.13	20,852.45
2009	60.19	21,969.35

## Care & Custody

Operating Expenditures	
1998	146,461,122
1999	151,336,081
2000	164,025,025
2001	175,717,556
2002	182,187,792
2003	185,682,413
2004	209,542,704
2005	215,042,365
2006	243,207,957
2007	253,342,707
2008	272,844,471
2009	280,135,153

## Agriculture Programs

Unit	Acres	Program
Cummins	14,680	Crops, Garden, Livestock
Tucker	3,601	Row crops, Garden
Wrightsville	5,000	Livestock
East AR Reg.	2,500	Cotton, Wheat, Soybean
Ouachita	100	Garden, Livestock
Newport	129	Garden, Livestock
N. Central	93	Orchard, Garden, Livestock
<b>Total Acreage</b>	<b>26,103</b>	

## Federal Grants Received

Tuberculosis Grant (TB-2008)	\$ 40,163
Residential Substance Abuse (07-1907R)	45,962
Residential Substance Abuse (08-190R)	25,384
State Criminal Alien Asst. Program (SCAAP) 08	254,704
Adam Walsh SMART08	231,500
Statewide Automated Victim Information	184,500
FEMA	296,925
<b>Total Received</b>	<b>\$ 1,079,138</b>

# Demographics fy 09

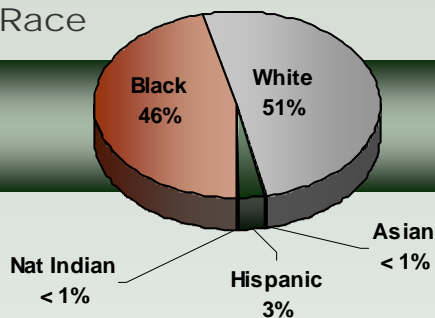
Top 10 Admission Offenses

Offense	Total	Avg Sentence
Controlled Substance	2,050	8y 4m 16d
Burglary	946	8y 4m 15d
Theft	655	6y 4m 21d
Assault & Battery	417	7y 6m 21d
Robbery	333	12y 1m 11d
Sexual Offenses	325	15y 5m 13d
Obstructing Gov. Oper.	293	5y 2m 2d
Forgery	292	5y 1m 15d
Weapons	176	6y 4m 5d
Offense Involving Family	167	5y 0m 17d

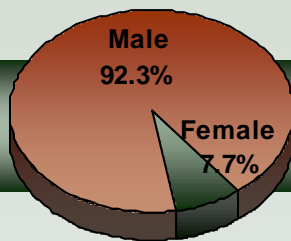
Top 10 Stock Population Offenses

Offense	Total	Avg Sentence
Controlled Substance	2,819	13y 11m 0d
Sexual Offenses	2,182	25y 2m 22d
Homicide	1,935	36y 3m 26d
Aggrav. Robbery	1,173	28y 10m 26d
Burglary	1,076	13y 0m 25d
Assault & Battery	662	16y 4m 7d
Robbery	661	16y 1m 20d
Theft	558	9y 9m 17d
Gang Related	387	20y 11m 2d
Obstruct. Gov Oper.	279	8y 1m 8d

Race

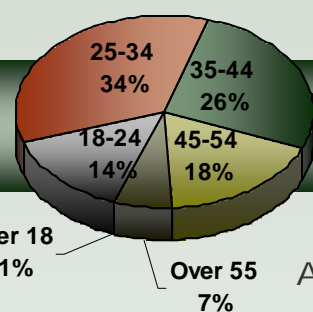


Gender



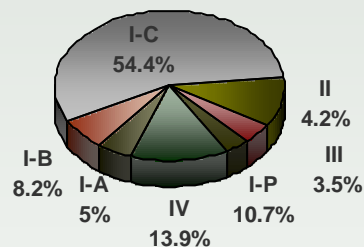
Under 18 <1%

Age



FY09 Releases			Average Sentence Data				
	Male	Female	Total		Male	Female	Total
Asian	16	2	18	Sent.	5y 5m 19d	8y 0m 0d	5y 9m 0d
				Stay	1y 7m 26d	1y 4m 1d	1y 4m 20d
Black	2,593	225	2,818	Sent.	9y 5m 2d	6y 7m 0d	9y 2m 10d
				Stay	4y 2m 19d	2y 2m 14d	4y 0m 21d
Hispanic	218	14	232	Sent.	6y 10m 11d	9y 0m 26d	7y 0m 0d
				Stay	2y 2m 0d	2y 1m 2d	2y 1m 26d
NA Indian	11	2	13	Sent.	6y 2m 5d	4y 6m 1d	5y 11m 2d
				Stay	2y 0m 0d	1y 0m 9d	1y 10m 5d
Mexican	9	0	9	Sent.	9y 3m 10d	0	9y 3m 10d
				Stay	2y 8m 18d	0	2y 8m 18d
Other	4	0	4	Sent.	17y 3m 0d	0	17y 3m 0d
				Stay	4y 0m 0d	0	4y 0m 0d
Caucasian	3,202	543	3,745	Sent.	8y 0m 0d	6y 7m 24d	7y 9m 17d
				Stay	3y 6m 0d	2y 0m 10d	3y 3m 11d
Total	6,053	786	6,839	Sent.	8y 6m 22d	6y 8m 1d	8y 4m 3d
				Stay	3y 9m 0d	2y 0m 27d	3y 6m 19d

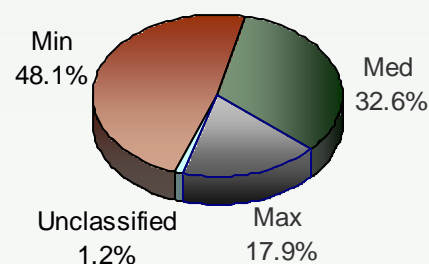
Good Time Class



Population - 6/30/2009

Custody - 13,237  
Jurisdiction - 14,996  
Average Daily - 14,529

Custody Class





# Admissions fy 09

County	Males			Females		
	B	W		B	W	
Arkansas	41	19	0.9%	2	1	0.0%
Ashley	28	21	0.7%	11	6	0.3%
Baxter	0	58	0.9%	0	3	0.0%
Benton	9	232	3.5%	0	47	0.7%
Boone	1	51	0.8%	0	8	0.1%
Bradley	13	6	0.3%	1	1	0.0%
Calhoun	5	5	0.1%	0	0	0.0%
Carroll	0	22	0.3%	0	2	0.0%
Chicot	27	4	0.5%	1	0	0.0%
Clark	23	16	0.6%	0	1	0.0%
Clay	1	36	0.5%	0	2	0.0%
Cleburne	1	41	0.6%	0	4	0.1%
Cleveland	7	14	0.3%	0	1	0.0%
Columbia	38	9	0.7%	2	0	0.0%
Conway	12	17	0.2%	1	0	0.2%
Craighead	89	113	3.0%	8	20	0.4%
Crawford	14	119	2.0%	1	20	0.3%
Crittenden	184	52	3.5%	16	10	0.4%
Cross	6	7	0.2%	0	0	0.0%
Dallas	11	4	0.2%	0	0	0.0%
Desha	29	4	0.5%	1	1	0.0%
Drew	27	17	0.7%	2	6	0.1%
Faulkner	91	125	3.2%	9	24	0.5%
Franklin	2	35	0.5%	0	6	0.1%
Fulton	0	11	0.2%	0	3	0.0%
Garland	56	78	2.0%	4	9	0.2%
Grant	9	20	0.4%	1	8	0.1%
Greene	7	91	1.4%	1	7	0.1%
Hempstead	41	12	0.8%	5	2	0.1%
Hot Springs	20	34	0.8%	1	6	0.1%
Howard	40	27	1.0%	5	8	0.2%
Independ.	11	46	0.8%	2	6	0.1%
Izard	0	14	0.2%	0	0	0.0%
Jackson	27	41	1.0%	4	5	0.1%
Jefferson	108	28	2.0%	8	3	0.2%
Johnson	4	56	0.9%	0	11	0.2%
Lafayette	26	7	0.5%	2	1	0.0%
Lawrence	25	9	0.5%	5	1	0.1%
Lee	10	5	0.2%	0	0	0.0%
Lincoln	5	4	0.1%	1	1	0.0%

County	Males			Females		
	B	W		B	W	
Little River	21	26	0.7%	4	5	0.1%
Logan	3	19	0.3%	0	3	0.0%
Lonoke	44	111	2.3%	6	18	0.4%
Madison	7	6	0.2%	1	0	0.0%
Marion	1	29	0.4%	0	2	0.0%
Miller	98	81	2.6%	12	13	0.4%
Mississippi	94	44	2.0%	5	6	0.2%
Monroe	21	10	0.5%	1	2	0.0%
Montgomery	0	6	0.1%	0	0	0.0%
Nevada	11	8	0.3%	1	2	0.0%
Newton	0	9	0.1%	0	1	0.0%
Ouachita	44	10	0.8%	0	0	0.0%
Perry	0	12	0.2%	0	0	0.0%
Phillips	21	8	0.4%	1	1	0.0%
Pike	0	13	0.2%	0	0	0.0%
Poinsett	10	34	0.7%	0	9	0.1%
Polk	0	14	0.2%	0	2	0.0%
Pope	21	114	2.0%	5	21	0.4%
Prairie	8	6	0.2%	0	1	0.0%
Pulaski	614	217	12.3%	52	46	1.4%
Randolph	0	27	0.4%	0	4	0.1%
St Francis	44	10	0.8%	2	2	0.1%
Saline	22	105	1.9%	3	21	0.4%
Scott	2	18	0.3%	0	3	0.0%
Searcy	0	7	0.1%	0	1	0.0%
Sebastian	148	369	7.6%	14	33	0.7%
Sevier	8	38	0.7%	0	7	0.1%
Sharp	1	19	0.3%	0	2	0.0%
Stone	0	19	0.3%	0	4	0.1%
Union	115	22	2.0%	12	5	0.3%
Van Buren	1	26	0.4%	0	5	0.1%
Washington	103	384	7.2%	5	60	1.0%
White	25	112	2.0%	2	26	0.4%
Woodruff	1	1	0.0%	0	0	0.0%
Yell	0	21	0.3%	0	4	0.1%
Int.St.Comp.	0	0	0.0%	0	0	0.0%
Unknown	1	1	0.0%	0	1	0.0%

**Males = 6,003 Females = 764 Total Intakes = 6,767**

**Average County Jail Backup - 1,294  
Average County 309 Contract - 279**

# Directory fy 09

**Larry B. Norris, Director** (870) 267-6200  
 Raymond Naylor, Assistant to the Director  
 Jan Scussel, Staff Attorney  
 Dina Tyler, Legislative and Public Affairs  
 James Gibson, Administrator, Internal Affairs  
 Tracey Robertson, EEO/Grievance Officer  
 Mike Wynn, Internal Auditor

**Institutions**

**Ray Hobbs, Chief Deputy Director** (870) 267-6300  
 Roy Agee, Administrator, Classification  
 Mary Jones, Coordinator, Vocational Education  
 John Kleiner, Coordinator, Emergency Preparedness  
 Lt. Dennis Reap, Supervisor, K-9 Drug/Contraband  
 Nancy Koonce, Manager, Accreditation  
 Shery Moring, Coordinator, Drug Testing

**Ronald Dobbs, Assistant Director** (870) 267-6215  
 Danny Heflin, Coordinator, Transportation

**Health and Correctional Programs**

**Wendy Kelley, Deputy Director** (870) 267-6360  
 Rory Griffin, Administrator, Medical Services  
 Bob Parker, Administrator, Mental Health Services  
 Dr. Stephen Holt, Clinical Director, Mental Health  
 Roger Cameron, Coordinator, Alcohol & Drug Treatment  
 Sherrie Williams, Coordinator, Volunteer Services  
 Eddie Sensat, Administrator, Religious Services  
 Sheri Flynn, Administrator, Sex Offender Assessment  
 Bernstein Coleman, Coordinator, Pre-Release  
 Dennice Alexander, Administrator, Inmate Library

**Institutional Operations**

**Larry May, Deputy Director** (870) 267-6303  
 Jerry Campbell, Administrator, Industry  
 Mark McCown, Administrator, Agriculture  
 Tiffanye Compton, Coordinator, Inmate Grievance  
 Bill Terry, Coordinator, Act 309 Program

**Administrative Services**

**Sheila Sharp, Assistant Director** (870) 267-6240  
 Kevin Murphy, Administrator, Human Resources  
 Kay Skillen, Administrator, Warehouse Operations  
 Mike Carraway, Administrator, Fiscal Affairs  
 Jeff Jerry, Administrator, Accounting Control, Banking  
 Rick Norton, Administrator, Accounting Operations  
 Rhonda Westerman, Administrator, Information Systems  
 Teresa Funderburg, Administrator, Procurement  
 George Brewer, Administrator, Research and Planning

**Construction/Maintenance**

**Vacant, Assistant Director** (870) 267-6625  
 Leon Starks, Coordinator, Maintenance  
 Robert Leggett, Coordinator, Construction  
 Lynn Roberts, Coordinator, Construction//Maintenance

**Correction School System**

**Charles Allen, Ph.D., Chief Adm. Officer** (870) 267-6725  
 8000 Correction Circle, Pine Bluff, AR 71603

**Riverside Vo-Tech School**

**Joe Kelnhofer, Director** (870) 267-6903  
 8000 Correction Circle, Pine Bluff, AR 71603

**AR Correctional School**  
**Dubs Byers, Superintendent** (870) 267-6736  
 8000 Correction Circle, Pine Bluff, AR 71603

**Facilities**

**Benton Unit** : (501) 315-2252  
**Sara McQuilliams, Warden**  
 6701 Hwy. 67, Benton, AR 72015-8488

**Cummins Unit** (870) 850-8899  
**Gaylon Lay, Warden**  
 P.O. Box 500, Grady, AR 71644-0500

**Delta Regional Unit** (870) 538-2000  
**Mark Cashion, Warden**  
 880 East Gaines, Dermott, AR 71638-9505

**Diagnostic Unit** (870) 267-6410  
**Marvin Evans, Warden**  
 7500 Correction Circle, Pine Bluff, AR 71603-1498

**East Arkansas Regional Unit** (870) 295-4700  
**Greg Harmon, Warden**  
 P.O. Box 180, Brickeys, AR 72320-0180

**Grimes Unit** (870) 523-8302  
**John Maples, Jr., Warden**  
 300 Corrections Drive, Newport, AR 72112-33493

**J. Aaron Hawkins Sr. Center (Women)** (501) 897-1195  
**Kay Howell, Warden**  
 P.O. Box 1010, Wrightsville, AR 72183-1010

**Randall L. Williams Correctional Facility** (870) 267-6800  
**Marvin Evans, Warden**  
 7206 West 7<sup>th</sup> Ave., Pine Bluff, AR 71603

**Maximum Security Unit** (501) 842-3800  
**David White, Warden**  
 2501 State Farm Road, Tucker, AR 72168-8713

**McPherson Unit (Women's Unit)** (870) 523-2639  
**John Maples, Jr., Warden**  
 302 Corrections Drive, Newport, AR 72112-33493

**Mississippi County Work Release** (870) 658-2214  
**Joe Porchia, Supervisor**  
 P.O. Box 10, Luxora, AR 72358-0010

**North Central Unit** (870) 297-4311  
**Danny Burl, Warden**  
 HC 62, Box 300 Calico Rock, AR 72519-0300

**Northwest AR Work Release Center** (479) 756-2037  
**James Brooks, Supervisor**  
 200 East Price Ave., Springdale, AR 72764-1352

**Ouachita River Correctional Unit** (501) 467-3400  
**Dale Reed, Warden**  
 P.O. Box 1630, Malvern, AR 72104

**Pine Bluff Unit** (870) 267-6510  
**Marvin Evans, Warden**  
 890 Freeline Dr., Pine Bluff, AR 71603 -1498

**Texarkana Regional Correction Center** (870) 779-3939  
**Larry Cauley, Supervisor**  
 305 East 5th Street, Texarkana, AR 75501

**Tucker Unit** (501) 842-2519  
**Jimmy Banks, Warden**  
 P.O. Box 240, Tucker, AR 72168-0240

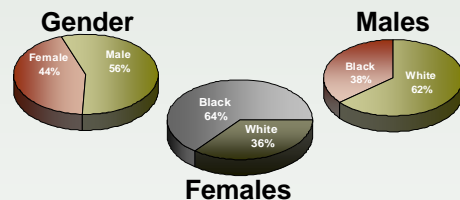
**Varner/ Varner Supermax Unit** (870) 575-1800  
**Grant Harris, Warden**  
 P.O. Box 600, Grady, AR 71644-0600

**Wrightsville Unit** (501) 897-5806  
**Kay Howell, Warden**  
 P.O. Box 1000, Wrightsville, AR 72183-1000

**Wrightsville Boot Camp** (501) 897-2800  
**Kay Howell, Warden**  
 P.O. Box 1010, Wrightsville, AR 72183-1000

**Arkansas Board of Corrections**  
**P.O. Box 20550**  
**Pine Bluff, AR 71612**  
**(870) 267- 6754**

**Benny Magness, Chair**  
**Dr. Mary Parker, Vice-Chair**  
**Alonza Jiles, Secretary**  
**Leroy Brownlee, Member**  
**Drew Baker, Member**  
**Ken Jones, Member**  
**Janis Walmsley, Member**  
**Mark Colbert, Compliance Attorney**  
**Shari Gray, Admin. Assistant**



Personnel Ethnic Breakdown			
	Male	Female	Total
White	1,331	579	1,910
Black	761	1,053	1,814
Hispanic	2	7	9
Others	9	3	12
<b>Total</b>	<b>2,103</b>	<b>1,642</b>	<b>3,766</b>

**See our website for additional information**  
<http://www.adc.arkansas.gov>

**Administration Building/Central Office** (870) 267-6999  
 6814 Princeton Pike, Pine Bluff, AR 71602

**Administrative Annex East Building** (870) 850-8510  
 2403 East Harding, Pine Bluff, AR 71601