



Department
Of Correction

Arkansas Recidivism Study

Tiffanye Compton, Research and Planning Administrator
Brenda K Wilson, Administrative Analyst

2011

1. Overall Recidivism rate increased from 40.3% in 2007 to 44.9% in CY2008, a variance of 4.6 percentage points. This is due largely to the limit placed on how many times a TPV may be housed at the Omega Technical Violator Center (Table 1, pg 2).
2. At a three-year post release, 2008 recidivism rates increased from 7.5% the first six months to 44.9% in three years, a 37.4% overall increase (Table 1, pg. 2).
3. Recidivism rate, at 45.6% over three years for paroled inmates, was significantly higher in 2008 than that of discharged inmates at 15.9% (Table 2, pg. 3).
4. For 2008, Parole and Discharge return rates increased significantly throughout the three-year post return (Table 2, pg. 3).
5. Parole Violators with New Sentences, within a three-year post release, accounted for 61% of the recidivists and Parole Violators with Technical Violations accounted for 33%, while Discharges with New Sentences only accounted for 6%.
6. 2008 Recidivism rates for male offenders show a three-year post release return rate of 47% as compared to a return rate of 28.7% for females (Table 4, pg. 6).
7. An overall three-year post release for 2008 demonstrates that 47.4% of blacks and 44.6% of whites returned to prison. The recidivism rates for blacks and whites increased by 2.9 points and 6.6 points respectively from the previous year (Table 5, pg. 9).
8. For 2008 releases within a three-year post release and a return to prison, inmates within the age range of 25-34 for both males and females demonstrated the highest total return rates, with ages 35-44 coming in second (Table 6, pg. 10).

Public Services Division, Research and Planning, Arkansas Department of Correction
P.O. Box 8707, Pine Bluff, AR 71602, Telephone (870) 267-6335
Ray Hobbs, Director Dina Tyler, Asst. Director

Arkansas' Recidivism Study (Addendum)

The **2008** recidivism research is an addendum to the original **1997-1999** study produced in **2003** and to the addendums through **2007**, produced in prior years. This addendum was prepared by the Arkansas Department of Correction's Research and Planning Division. The addendum reviews the return rates of inmates released from custody in **2008**, as compared to prior years. The data for this research was obtained from the ADC electronic Offender Management Information System (eOMIS). If an individual was released **January 1, 2008**, through **December 31, 2008**, the data provided reflects returns for a full three-year post release. All charts and tables reflect a three-year post release review and are utilized strictly for clarity and ease to the reader.

The study is categorized into return rates of six months, one year, and three years, respectively. As with the **2007** addendum regarding a three-year post release of inmates produced in **2010**, the ADC Research and Planning Section will continue to study, track and update trends in release/return rates annually.

Overall Recidivism Rates

As demonstrated, Table 1 shows the overall ADC **2008** recidivism rates. The post-release period consists of six months, one year, and three years, from **1997** through **2008**. In **2008**, there were a total of **6,305** inmates released from ADC (refer to Table 1, year 2008). Within six months of release, **7.5%** returned to prison. Within one year of release, **20.2%** returned and within three years there was an overall rate of **44.9%** returned to prison. ADC has experienced a **46.1%** average return rate for inmates released from prison over the ten years studied.

**In all tables, the "number of releases" is the number of unduplicated releases in a given year used to generate recidivism rates. Table 1 does not specify the type of return. It demonstrates an overall return rate, regardless of reason.*

Table 1

| Overall Recidivism Rates | | | | | | | | |
|---------------------------------|-----------------------|----------------------------|----------------------------|--------------------------|--------------------------|---------------------------|---------------------------|------------------------|
| Release Year | Total Releases | % Returned 6 Months | # Returned 6 Months | % Returned 1 Year | # Returned 1 Year | % Returned 3 Years | # Returned 3 Years | Total % Returns |
| 1999 | 5,330 | 15.6% | 832 | 30.6% | 1,629 | 51.4% | 2,738 | 51.4% |
| 2000 | 5,872 | 14.2% | 834 | 29.0% | 1,701 | 51.8% | 3,040 | 51.8% |
| 2001 | 5,962 | 15.9% | 948 | 29.7% | 1,771 | 51.4% | 3,066 | 51.4% |
| 2002 | 6,015 | 15.1% | 911 | 28.5% | 1,716 | 49.4% | 2,969 | 49.4% |
| 2003 | 6,135 | 12.9% | 792 | 25.9% | 1,586 | 47.4% | 2,905 | 47.4% |
| 2004 | 6,244 | 11.2% | 698 | 22.1% | 1,377 | 44.4% | 2,772 | 44.4% |
| 2005 | 5,657 | 7.4% | 418 | 18.3% | 1,036 | 41.4% | 2,344 | 41.4% |
| 2006 | 5,505 | 6.4% | 355 | 17.1% | 943 | 37.4% | 2,060 | 37.4% |
| 2007 | 5,783 | 6.2% | 359 | 15.2% | 881 | 40.3% | 2,330 | 40.3% |
| 2008 | 6,305 | 7.5% | 475 | 20.2% | 1,275 | 44.9% | 2,831 | 44.9% |
| Averages | 5,881 | 11.7% | 662 | 24.0% | 1,392 | 46.1% | 2,706 | 46.1% |

Recidivism Rates: Release Type

Table 2 demonstrates recidivism rate by type of release. ADC releases inmates by parole with supervision, which is granted by the Parole Board, or by discharge (max flat of sentence). In **2008**, there were **6,160** inmates released by regular parole and **145** inmates discharged. Results indicate that within six months of release in **2008**, **469** or **7.6%** of inmates released on parole had returned, while only **6** or **4.1%** of inmates discharged returned with a new sentence. Total returns of parole releases from ADC in **2008** show a **45.6%** return rate, while discharges reflect a **15.9%** return rate.

Table 2

| Recidivism Rates By Type of Release | | | | | | | | |
|--|--------------------------|-----------------------|-----------------------|------------------|-----------------------|------------------|------------------------|------------------|
| Year | Type of Release | Total Releases | 6 Mths Returns | % Returns | 1 Year Returns | % Returns | 3 Years Returns | % Returns |
| 1999 | Paroled - Regular | 4,677 | 803 | 17.2% | 1,557 | 33.3% | 2,553 | 54.6% |
| | Discharge | 643 | 28 | 4.4% | 71 | 11.0% | 184 | 28.6% |
| 2000 | Paroled - Regular | 5,691 | 832 | 14.6% | 1,691 | 29.7% | 3,005 | 52.8% |
| | Discharge | 181 | 2 | 1.1% | 10 | 5.5% | 35 | 19.3% |
| 2001 | Paroled - Regular | 5,778 | 947 | 16.4% | 1,762 | 30.5% | 3,042 | 52.6% |
| | Discharge | 184 | 1 | 0.5% | 9 | 4.9% | 24 | 13.0% |
| 2002 | Paroled - Regular | 5,841 | 910 | 15.6% | 1,707 | 29.2% | 2,938 | 50.3% |
| | Discharge | 174 | 1 | 0.6% | 9 | 5.2% | 31 | 17.8% |
| 2003 | Paroled - Regular | 5,958 | 788 | 13.2% | 1,577 | 26.5% | 2,861 | 48.0% |
| | Discharge | 177 | 4 | 2.3% | 9 | 5.1% | 43 | 24.3% |
| 2004 | Paroled - Regular | 6,075 | 693 | 11.4% | 1,368 | 22.5% | 2,735 | 45.0% |
| | Discharge | 169 | 5 | 3.0% | 9 | 5.3% | 37 | 21.9% |
| 2005 | Paroled - Regular | 5,505 | 413 | 7.5% | 1,025 | 18.6% | 2,317 | 42.1% |
| | Discharge | 152 | 5 | 3.3% | 11 | 7.2% | 27 | 17.8% |
| 2006 | Paroled - Regular | 5,358 | 350 | 6.5% | 931 | 17.4% | 2,020 | 37.7% |
| | Discharge | 147 | 5 | 3.4% | 12 | 8.2% | 40 | 27.2% |
| 2007 | Paroled - Regular | 5,623 | 357 | 6.3% | 872 | 15.5% | 2,293 | 40.8% |
| | Discharge | 160 | 2 | 1.3% | 9 | 5.6% | 37 | 23.1% |
| 2008 | Paroled - Regular | 6,160 | 469 | 7.6% | 1,262 | 20.5% | 2,808 | 45.6% |
| | Discharge | 145 | 6 | 4.1% | 13 | 9.0% | 23 | 15.9% |
| Total | Paroled - Regular | 56,666 | 6,562 | 11.6% | 13,752 | 24.3% | 26,572 | 46.9% |
| | Total Discharged | 2,132 | 59 | 2.8% | 162 | 7.6% | 481 | 22.6% |

Recidivism Rates: (Return Types) Parolees and Discharges

Table 3 and Figures 3, 3-1, and 3-2 show inmates that return to prison for parole violations with a new sentence(s); or parole violators returning with a technical violation(s); and discharges (a reconvicted inmate) that returned to prison as a recommitment with a new sentence. Although the number of technical parole violators returned to ADC since the opening of the Omega Technical Parole Violator Center decreased, the number returned in **2008** more than doubled from **2007**. Even though a new conviction may also have a technical violation attached, the new conviction in most cases will supersede the technical violation making the new conviction the primary reason for return to prison.

Table 3

| Recidivism Of Parolees And Discharges | | | | | | | | |
|---------------------------------------|----------------|--------------------------|----------------|-----------|----------------|-----------|-----------------|-----------|
| Year | Total Releases | Type of Return | 6 Mths Returns | % Returns | 1 Year Returns | % Returns | 3 Years Returns | % Returns |
| 1999 | 5,323 | PV/New Sentence | 217 | 4.1% | 388 | 7.3% | 616 | 11.6% |
| | | PV/Technical | 581 | 10.9% | 1,156 | 21.7% | 1,848 | 34.7% |
| | | Discharge - Reconviction | 30 | 0.6% | 81 | 1.6% | 309 | 5.9% |
| 2000 | 5,872 | PV/New Sentence | 196 | 3.3% | 424 | 7.2% | 795 | 13.5% |
| | | PV/Technical | 633 | 10.8% | 1,254 | 10.6% | 2,078 | 14.0% |
| | | Discharge - Reconviction | 5 | 0.1% | 23 | 0.4% | 167 | 2.9% |
| 2001 | 5,962 | PV/New Sentence | 283 | 4.7% | 540 | 9.1% | 913 | 15.3% |
| | | PV/Technical | 663 | 11.1% | 1,211 | 20.3% | 1,972 | 33.1% |
| | | Discharge - Reconviction | 2 | 0.0% | 20 | 0.3% | 181 | 3.0% |
| 2002 | 6,015 | PV/New Sentence | 793 | 13.2% | 1,516 | 25.2% | 2,549 | 42.4% |
| | | PV/Technical | 113 | 1.9% | 174 | 2.9% | 215 | 3.6% |
| | | Discharge - Reconviction | 5 | 0.1% | 26 | 0.4% | 205 | 3.4% |
| 2003 | 6,135 | PV/New Sentence | 785 | 12.8% | 1,558 | 25.4% | 2,668 | 43.5% |
| | | Discharge - Reconviction | 7 | 0.1% | 28 | 0.5% | 237 | 3.9% |
| 2004 | 6,244 | PV/New Sentence | 686 | 11.0% | 1,341 | 21.5% | 2,535 | 40.6% |
| | | Discharge - Reconviction | 12 | 0.2% | 36 | 0.6% | 237 | 3.8% |
| 2005 | 5,657 | PV/New Sentence | 407 | 7.2% | 999 | 17.7% | 2,120 | 37.5% |
| | | Discharge - Reconviction | 11 | 0.2% | 37 | 0.7% | 224 | 4.0% |
| 2006 | 5,505 | PV/New Sentence | 346 | 6.3% | 918 | 16.7% | 1,868 | 33.9% |
| | | Discharge - Reconviction | 9 | 0.2% | 25 | .4% | 192 | 3.5% |
| 2007 | 5783 | PV/New Sentence | 352 | 6.1% | 850 | 14.7% | 1708 | 29.5% |
| | | PV/Technical | 1 | 0.0% | 10 | 0.2% | 454 | 7.9% |
| | | Discharge - Reconviction | 6 | 0.1% | 21 | 0.4% | 168 | 2.9% |
| 2008 | 6305 | PV/New Sentence | 345 | 5.5% | 818 | 13.0% | 1,732 | 27.5% |
| | | PV/Technical | 122 | 1.9 | 427 | 6.8% | 925 | 14.7% |
| | | Discharge - Reconviction | 8 | 0.1% | 30 | 0.5% | 174 | 2.8% |

Fig 3-1

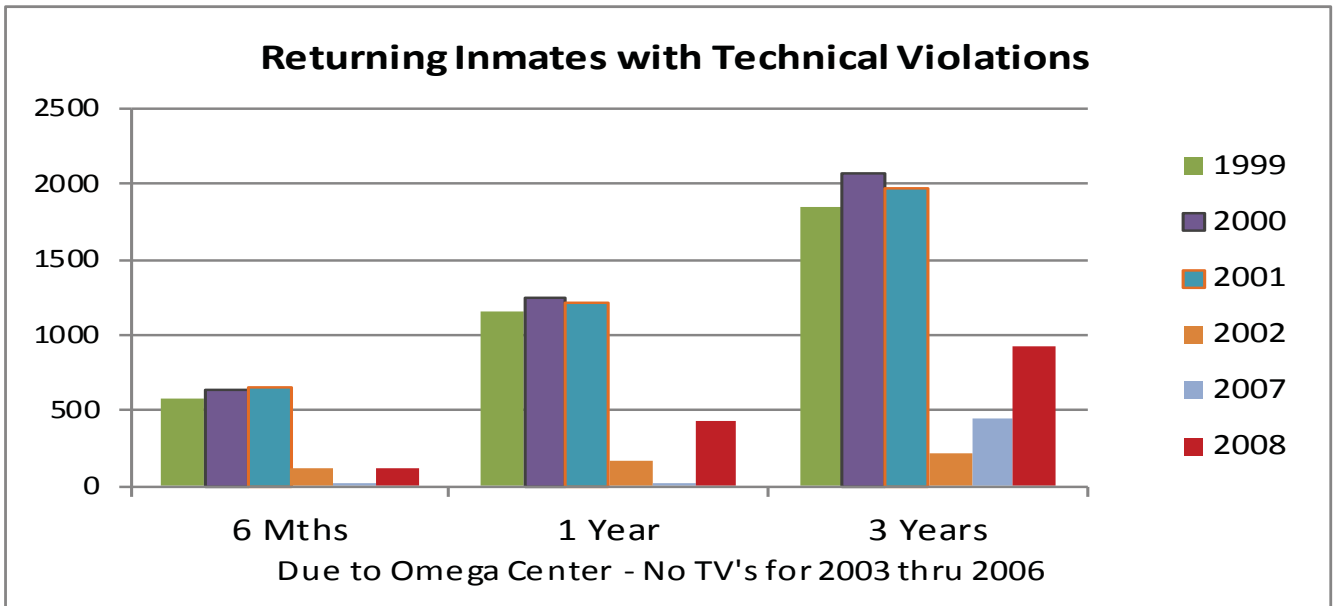


Fig 3-2

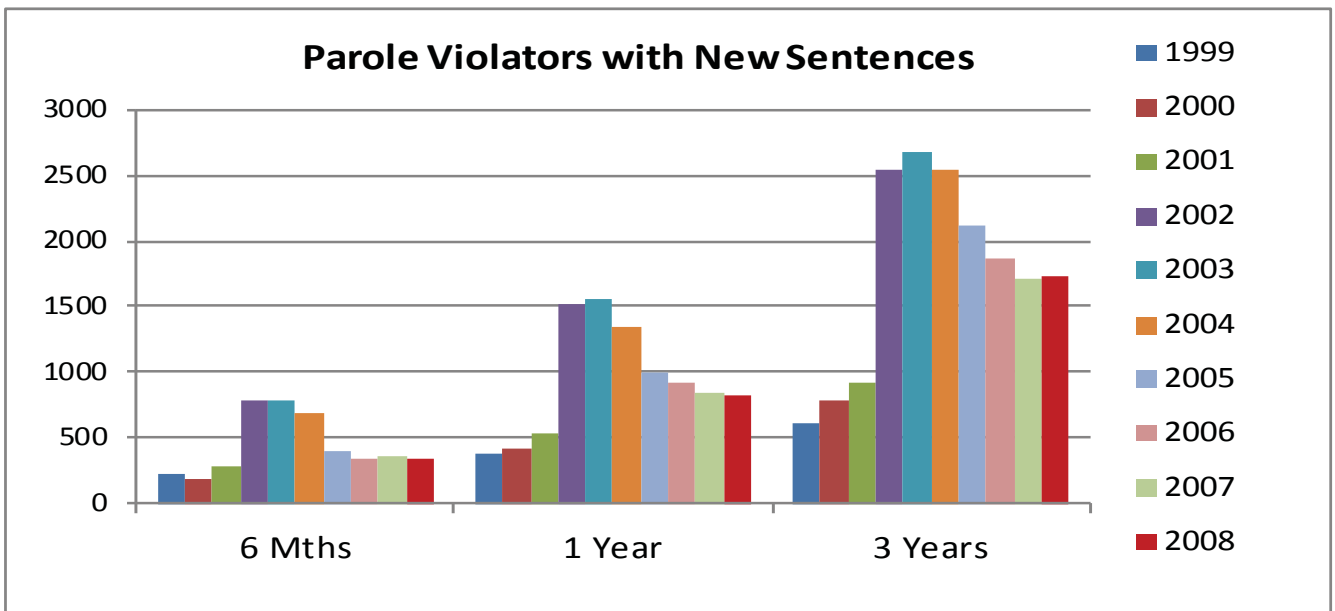
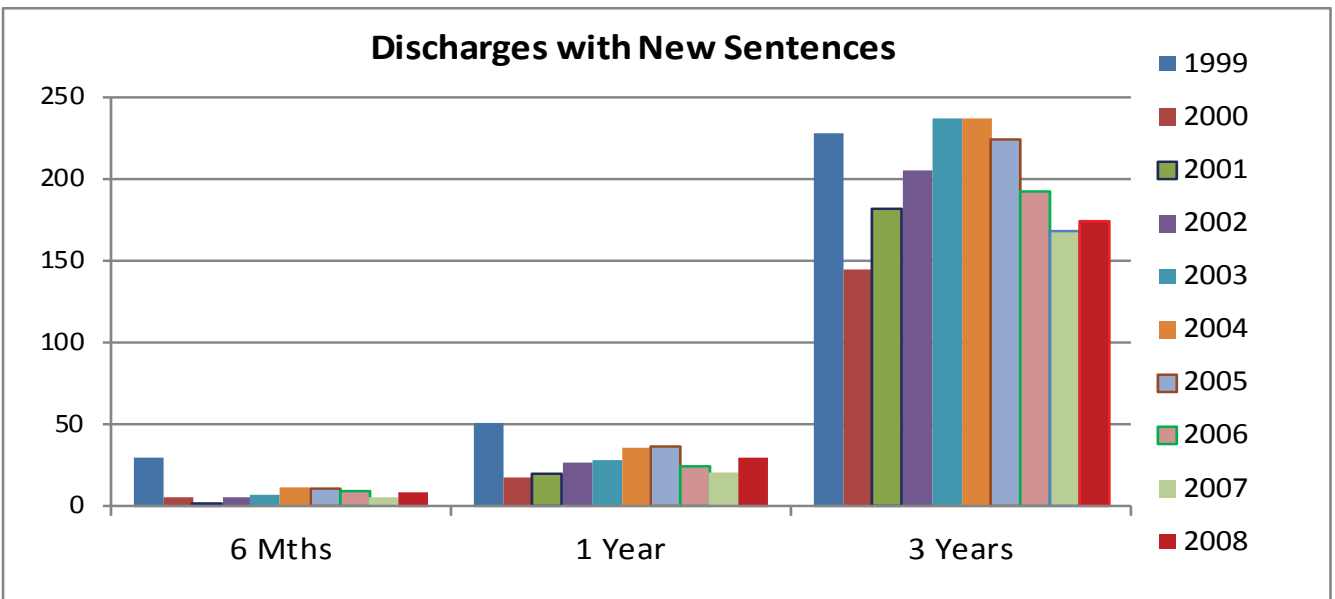


Fig 3-3



Recidivism Rates: Gender

Table 4 and Figures 4, 4-1, 4-2 exhibit recidivism rates by gender. In **2008**, males increased in return rates over the three-year post release time frame. From six months to one year, data demonstrated a fairly constant return rate for both males and females; however, by the end of the third year there was a significant increase in males returning to prison.

Table 4

| Recidivism Rates By Gender | | | | | | | | | |
|-----------------------------------|---------------|-----------------------|-----------------------|------------------|-----------------------|------------------|------------------------|------------------------|------------------------------------|
| Year | Gender | Total Releases | 6 month Return | % Returns | 1 Year Returns | % Returns | 3 Years Returns | Total % Returns | Total Inmates Not Returning |
| 1999 | Female | 545 | 58 | 10.6% | 115 | 21.1% | 206 | 37.8% | 339 |
| | Male | 4,785 | 774 | 16.2% | 1,514 | 31.6% | 2,532 | 52.9% | 2,253 |
| 2000 | Female | 652 | 75 | 11.5% | 158 | 24.2% | 264 | 40.5% | 388 |
| | Male | 5,220 | 759 | 14.5% | 1,543 | 29.6% | 2,766 | 53.0% | 2,454 |
| 2001 | Female | 625 | 81 | 13.0% | 140 | 22.4% | 260 | 41.6% | 365 |
| | Male | 5,337 | 867 | 16.2% | 1,631 | 30.6% | 2,806 | 52.6% | 2,531 |
| 2002 | Female | 594 | 67 | 11.3% | 134 | 22.6% | 242 | 40.7% | 320 |
| | Male | 5,421 | 844 | 15.6% | 1,582 | 29.2% | 2,727 | 50.3% | 2,426 |
| 2003 | Female | 616 | 54 | 8.8% | 111 | 18.0% | 215 | 34.9% | 401 |
| | Male | 5,519 | 738 | 13.4% | 1,475 | 26.7% | 2,690 | 48.7% | 2,829 |
| 2004 | Female | 551 | 31 | 5.6% | 56 | 10.2% | 139 | 25.2% | 413 |
| | Male | 5,693 | 667 | 11.7% | 1,321 | 23.2% | 2,633 | 46.2% | 3,060 |
| 2005 | Female | 534 | 15 | 2.8% | 44 | 8.2% | 123 | 23.0% | 411 |
| | Male | 5,124 | 403 | 7.9% | 992 | 19.4% | 2,221 | 43.3% | 2,903 |
| 2006 | Female | 614 | 18 | 2.9% | 57 | 9.3% | 137 | 22.3% | 477 |
| | Male | 4,891 | 337 | 6.9% | 886 | 18.1% | 1,923 | 39.3% | 2,968 |
| 2007 | Female | 675 | 21 | 3.1% | 53 | 7.9% | 158 | 23.4% | 517 |
| | Male | 5,783 | 338 | 5.8% | 828 | 14.3% | 2,172 | 37.6% | 3,611 |
| 2008 | Female | 735 | 27 | 3.7% | 87 | 11.8% | 211 | 28.7% | 524 |
| | Male | 5,570 | 448 | 8.0% | 1,188 | 21.3% | 2,620 | 47.0% | 2,950 |

Figure 4

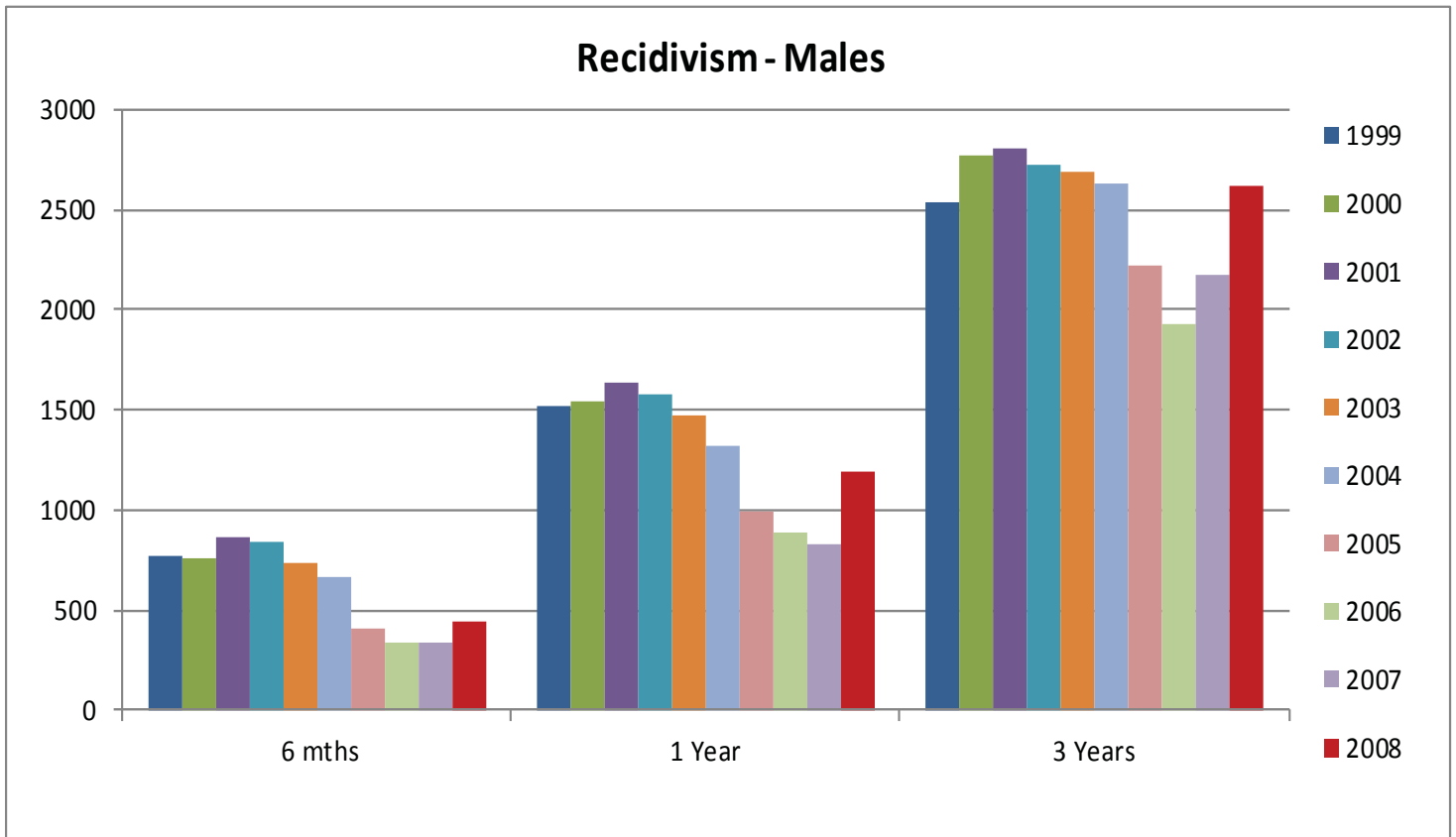


Figure 4 - 1

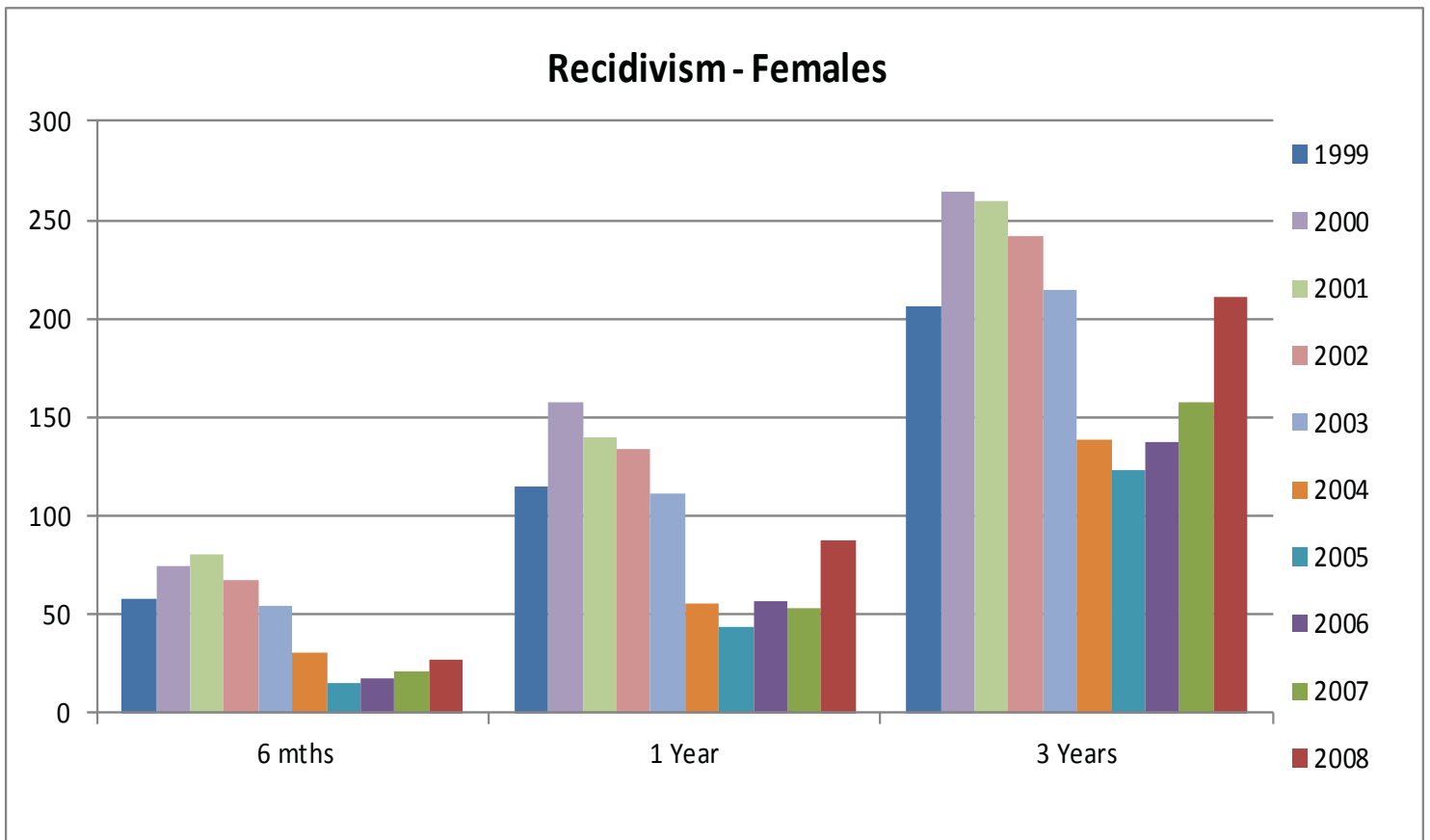
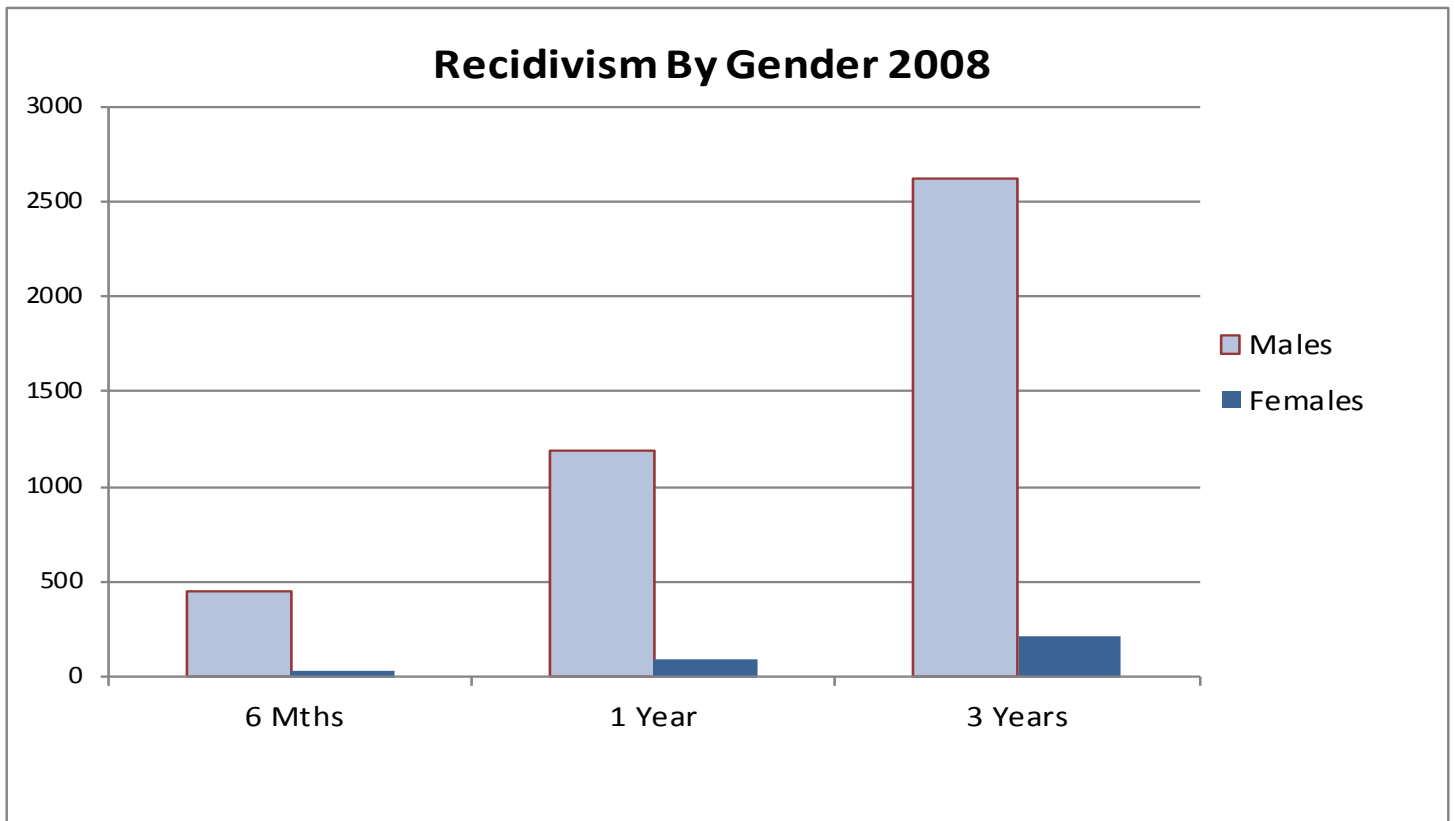


Figure 4 - 2



Recidivism Rates: Race

Figure 1. Recidivism rates were generated by race for 2008 and incorporated time frames of six months, one year, and three years. Recidivism rates were based on three areas of ethnic diversity. Within the ADC, the population primarily consists of Caucasian and African-American racial designations, while only a small percentage consists of Hispanic and Other. For this report, the category of Caucasian is denoted as White, the African-American category is denoted as Black, the Hispanic category consists of Cuban and Mexican racial designations and the Other category incorporates both Asian and Native American. The 2008 recidivism addendum study incorporates Caucasian, African-American, Hispanic, and Other racial designations to demonstrate recidivism rates by race as provided in Table 5. In 2008, 3,419 Caucasian inmates were released and within three years; 1,524 or 44.6% returned to prison, while 2,607 African-American inmates were released with 1,235 returning within three years. For 2008, African-American inmates have a higher recidivism rate (47.4% vs. 44.6%) than their Caucasian counterparts (see Table 5).

Table 5

| Recidivism Rates By Race | | | | | | | | |
|--------------------------|----------|----------------|-----------------|-----------|----------------|-----------|-----------------|-----------|
| Year | Race | Total Releases | 6 Month Returns | % Returns | 1 Year Returns | % Returns | 3 Years Returns | % Returns |
| 1999 | Black | 2,541 | 414 | 16.3% | 801 | 31.5% | 1,362 | 53.6% |
| | Hispanic | 19 | 2 | 10.5% | 3 | 15.8% | 5 | 26.3% |
| | Other | 13 | 0 | 0.0% | 2 | 15.4% | 3 | 23.1% |
| | White | 2,757 | 416 | 15.1% | 822 | 29.8% | 1,367 | 49.6% |
| 2000 | Black | 2,756 | 401 | 14.6% | 817 | 29.6% | 1,512 | 54.9% |
| | Hispanic | 66 | 6 | 9.1% | 10 | 15.2% | 16 | 24.2% |
| | Other | 62 | 4 | 6.5% | 5 | 8.1% | 9 | 14.5% |
| | White | 2,988 | 423 | 14.2% | 869 | 29.1% | 1,503 | 50.3% |
| 2001 | Black | 2,718 | 463 | 17.0% | 839 | 30.9% | 1,476 | 54.3% |
| | Hispanic | 64 | 3 | 4.7% | 10 | 15.6% | 18 | 28.1% |
| | Other | 45 | 3 | 6.7% | 4 | 8.9% | 8 | 17.8% |
| | White | 3,135 | 479 | 15.3% | 918 | 29.3% | 1,564 | 49.9% |
| 2002 | Black | 2,618 | 408 | 15.6% | 741 | 28.3% | 1,335 | 51.0% |
| | Hispanic | 75 | 5 | 6.7% | 9 | 12.0% | 13 | 17.3% |
| | Other | 30 | 0 | 0.0% | 3 | 10.0% | 7 | 23.3% |
| | White | 3,292 | 497 | 15.1% | 962 | 29.2% | 1,613 | 49.0% |
| 2003 | Black | 2,768 | 321 | 11.6% | 691 | 25.0% | 1,349 | 48.7% |
| | Hispanic | 50 | 4 | 8.0% | 11 | 22.0% | 20 | 40.0% |
| | Other | 13 | 0 | 0.0% | 1 | 7.7% | 5 | 38.5% |
| | White | 3,304 | 467 | 14.1% | 883 | 26.7% | 1,531 | 46.3% |
| 2004 | Black | 2,711 | 255 | 9.4% | 573 | 21.1% | 1,260 | 46.5% |
| | Hispanic | 64 | 10 | 15.6% | 14 | 21.9% | 24 | 37.5% |
| | Other | 19 | 1 | 5.3% | 4 | 21.1% | 5 | 26.3% |
| | White | 3,450 | 432 | 12.5% | 786 | 22.8% | 1,483 | 43.0% |
| 2005 | Black | 2,285 | 167 | 7.3% | 455 | 19.9% | 1,064 | 46.6% |
| | Hispanic | 70 | 6 | 8.6% | 11 | 15.7% | 22 | 31.4% |
| | Other | 30 | 4 | 13.3% | 7 | 23.3% | 10 | 33.3% |
| | White | 3,273 | 241 | 7.4% | 563 | 17.2% | 1,248 | 38.1% |
| 2006 | Black | 2,304 | 144 | 6.3% | 396 | 17.2% | 925 | 40.1% |
| | Hispanic | 115 | 10 | 8.7% | 12 | 10.4% | 29 | 25.2% |
| | Other | 22 | 1 | 4.5% | 2 | 9.1% | 4 | 18.2% |
| | White | 3,064 | 200 | 6.5% | 533 | 17.4% | 1,102 | 36.0% |
| 2007 | Black | 2,374 | 159 | 6.7% | 403 | 17.0% | 1,057 | 44.5% |
| | Hispanic | 155 | 12 | 7.7% | 18 | 11.6% | 34 | 21.9% |
| | Other | 38 | 3 | 7.9% | 7 | 18.4% | 16 | 42.1% |
| | White | 3,210 | 185 | 5.8% | 453 | 14.1% | 1,223 | 38% |
| 2008 | Black | 2,607 | 200 | 7.7% | 535 | 20.5% | 1,235 | 47.4% |
| | Hispanic | 247 | 11 | 4.5% | 26 | 10.5% | 53 | 21.5% |
| | Other | 32 | 5 | 15.6% | 12 | 37.5% | 19 | 59.4% |
| | White | 3,419 | 259 | 7.6% | 702 | 20.5% | 1,524 | 44.6% |

Recidivism Rates: Age

Age shows to be significantly related to recidivism within the ADC. An inmate's age at his/her last admission was significantly related to return to custody (See Table 6). For both males and females, the age cohort of 25-34 at admissions is most likely to return to prison within three (3) years (See Figure 6).

Table 6

| 2008 Recidivism by Age (female) | | | | | |
|---------------------------------|---------|------------------|----------------|-----------------|-----------------|
| Gender | AGE | 6 Months Returns | 1 Year Returns | 3 Years Returns | Total % Returns |
| Female | 18 - 24 | 5 | 11 | 25 | 11.85% |
| | 25 - 34 | 16 | 46 | 91 | 43.13% |
| | 35 - 44 | 4 | 21 | 72 | 34.12% |
| | 45 - 54 | 2 | 7 | 21 | 9.95% |
| | 55 - 64 | 0 | 2 | 2 | .95% |
| | Total | | 27 | 87 | 211 |

Table 6-1

| 2008 Recidivism by Age (male) | | | | | |
|-------------------------------|---------|------------------|----------------|-----------------|-----------------|
| Gender | AGE | 6 Months Returns | 1 Year Returns | 3 Years Returns | Total % Returns |
| Male | <= 17 | 0 | 0 | 2 | <0% |
| | 18 - 24 | 92 | 231 | 515 | 20% |
| | 25 - 34 | 206 | 515 | 1100 | 42% |
| | 35 - 44 | 91 | 282 | 662 | 25% |
| | 45 - 54 | 50 | 141 | 292 | 11% |
| | 55 - 64 | 9 | 18 | 46 | 2% |
| | >= 65 | 0 | 1 | 3 | <0% |
| | Total | | 448 | 1,188 | 2,620 |

Figure 6

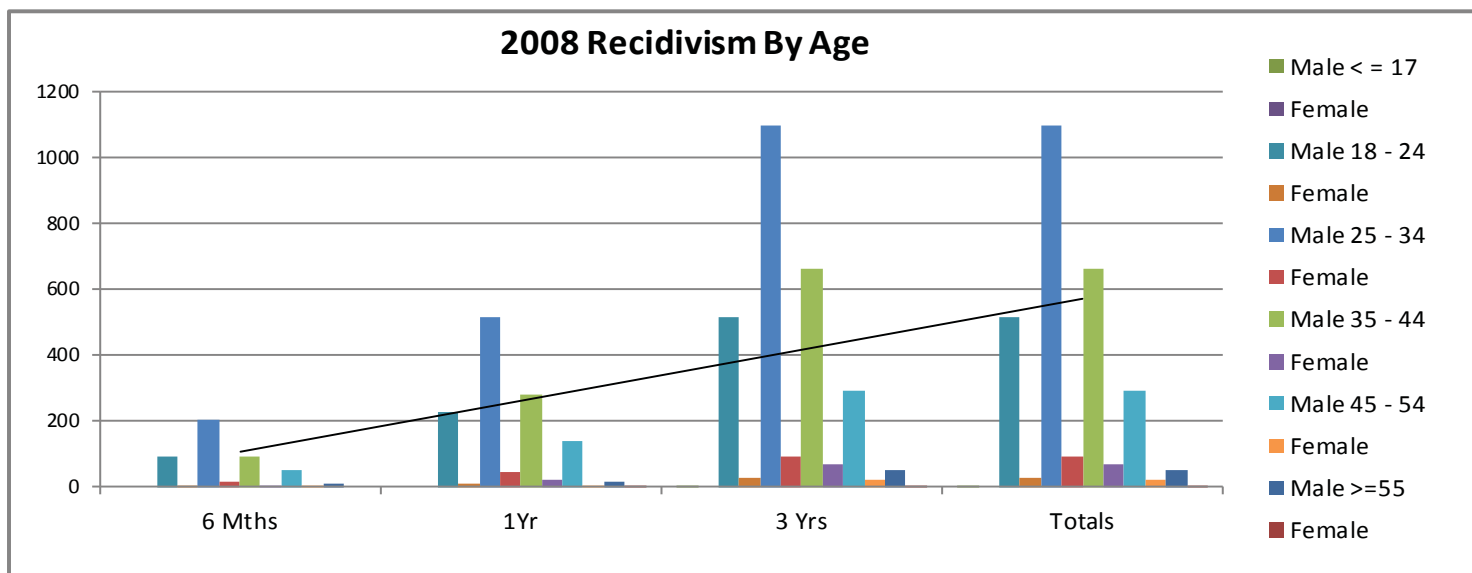


Table 7

| Recidivism Rates By Offense Category | | | |
|---|--------------------|-----------------------|-------------------|
| Offense Category | No.Releases | Ret w/in 3 yrs | % Returned |
| 0101 - Capital Murder | 5 | 3 | 60.0% |
| 0102 - Murder-1st Degree | 37 | 15 | 40.5% |
| 0103 - Murder-2nd Degree | 65 | 30 | 46.2% |
| 0104 - Manslaughter | 78 | 20 | 25.6% |
| 0105 - Negligent Homicide | 23 | 7 | 30.4% |
| 0201 - Kidnapping | 45 | 22 | 48.9% |
| 0202 - False Imprisonment-1st Degree | 33 | 20 | 60.6% |
| 0203 - Vehicular Piracy | 1 | 1 | 100.0% |
| 0204 - Permanent Detention | 2 | 1 | 50.0% |
| 0219 - Injury/Inter W/Gov. Property | 1 | 1 | 100.0% |
| 0301 - Robbery | 417 | 224 | 53.7% |
| 0302 - Aggravated Robbery | 139 | 64 | 46.0% |
| 0401 - Battery-1st Degree | 128 | 53 | 41.4% |
| 0402 - Battery-2nd Degree | 329 | 183 | 55.6% |
| 0403 - Aggravated Assault | 210 | 113 | 53.8% |
| 0404 - Terroristic Threatening | 172 | 100 | 58.1% |
| 0405 - Terroristic Act | 28 | 15 | 53.6% |
| 0406 - Agg. Assault On Corr. Employee | 8 | 4 | 50.0% |
| 0407 - Battery 3rd Deg. (Enhanced) | 4 | 2 | 50.0% |
| 0408 - Intro Cont Subs Body/Another | 2 | 1 | 50.0% |
| 0416 - Offense Com. Presence of Child | 1 | 0 | 0.0% |
| 0501 - Rape | 68 | 15 | 22.1% |
| 0502 - Carnal Abuse-1st Degree | 6 | 2 | 33.3% |
| 0503 - Carnal Abuse-2nd Degree | 2 | 1 | 50.0% |
| 0504 - Sexual Abuse-1st Degree | 57 | 24 | 42.1% |
| 0505 - Violation Of A Minor-2nd Dg | 1 | 1 | 100.0% |
| 0510 - Carnal Abuse-3rd Degree | 11 | 4 | 36.4% |
| 0513 - Sexual Assault | 149 | 52 | 34.9% |
| 0518 - Reg Sex offend near cert facI | 2 | 1 | 50.0% |
| 0658 - Residential Burglary | 568 | 351 | 61.8% |
| 0659 - Commercial Burglary | 265 | 164 | 61.9% |
| 0701 - Incest | 11 | 1 | 9.1% |
| 0702 - Domestic Battering-1st Degree | 14 | 7 | 50.0% |
| 0703 - Domestic Battering-2nd Degree | 42 | 14 | 33.3% |
| 0704 - Agg. Aslt On Family/Household | 19 | 13 | 68.4% |
| 0705 - Non-Support | 44 | 15 | 34.1% |
| 0707 - Interference With Custody | 2 | 0 | 0.0% |
| 0708 - Domestic Battering-3rd Degree | 73 | 29 | 39.7% |
| 0801 - Endanger Welfare Minor-1st Dg | 11 | 3 | 27.3% |
| 0803 - Permit Child Abuse | 3 | 0 | 0.0% |

Table 7 -contd.

| Recidivism Rates By Offense Category | | | |
|---|--------------------|-----------------------|-------------------|
| Offense Category | No.Releases | Ret w/in 3 yrs | % Returned |
| 0804 - Engage Child In Sex Explt | 1 | 0 | 0.0% |
| 0805 - Trans, Distr.Mat. Deplctg Chil | 3 | 2 | 66.7% |
| 0809 - Solicit Money/Prop From Incomp | 1 | 1 | 100.0% |
| 0810 - Sexual Solicitation Of A Child | 5 | 1 | 20.0% |
| 0813 - Dist/Poss/View Sex Explicit | 7 | 3 | 42.9% |
| 0814 - Computer Child Pornography | 10 | 2 | 20.0% |
| 0828 - Expose Child to Chem Substance | 7 | 2 | 28.6% |
| 0830 - Sexual Indecency With A Child | 31 | 16 | 51.6% |
| 0901 - Abuse Of Adults | 3 | 0 | 0.0% |
| 1001 - Theft Of Property | 661 | 332 | 50.2% |
| 1002 - Theft Of Services | 1 | 0 | 0.0% |
| 1004 - Theft By Receiving | 217 | 105 | 48.4% |
| 1005 - Theft Of Leased Property | 4 | 2 | 50.0% |
| 1006 - Theft Of Public Benefits | 5 | 2 | 40.0% |
| 1046 - Internet Stalk.- Child Fel. C | 19 | 2 | 10.5% |
| 1101 - Forgery | 221 | 99 | 44.8% |
| 1102 - Defrauding Secured Creditors | 1 | 0 | 0.0% |
| 1104 - Fraudulent Use Of Credit Card | 14 | 6 | 42.9% |
| 1113 - Hot Check Violation | 100 | 34 | 34.0% |
| 1118 - Financial Identity Fraud | 3 | 1 | 33.3% |
| 1202 - Impair Oper. Of Vital Pub.Facil | 2 | 1 | 50.0% |
| 1203 - Arson | 16 | 6 | 37.5% |
| 1204 - Reckless Burning | 1 | 1 | 100.0% |
| 1205 - Criminal Mischief-1st Degree | 29 | 15 | 51.7% |
| 1207 - Criminal Mischief 2nd Degree | 2 | 1 | 50.0% |
| 1301 - Burglary | 9 | 5 | 55.6% |
| 1302 - Breaking And Entering | 76 | 38 | 50.0% |
| 1601 - Perjury | 2 | 2 | 100.0% |
| 1603 - Intimidating A Witness | 2 | 1 | 50.0% |
| 1604 - Tampering With Physical Evid. | 12 | 5 | 41.7% |
| 1612 - Retaliation Against Informant | 2 | 1 | 50.0% |
| 1702 - Hindering Apprehension Or Proc | 11 | 5 | 45.5% |
| 1705 - Escape-1st Degree | 1 | 1 | 100.0% |
| 1706 - Escape-2nd Degree | 4 | 1 | 25.0% |
| 1707 - Permitting Escape-1st Degree | 1 | 0 | 0.0% |
| 1711 - Furnishing Prohib. Articles | 13 | 6 | 46.2% |
| 1712 - Failure To Appear | 81 | 31 | 38.3% |
| 1713 - Fleeing | 42 | 14 | 33.3% |
| 1715 - Filing A False Report | 1 | 0 | 0.0% |
| 1720 - Fail To Register Child/Sex Off | 32 | 7 | 21.9% |

Table 7 -contd.

| Recidivism Rates By Offense Category | | | |
|---|--------------------|-----------------------|-------------------|
| Offense Category | No.Releases | Ret w/in 3 yrs | % Returned |
| 2201 - Fail. To Keep Records Dist Drg | 80 | 31 | 38.8% |
| 2202 - Advertise Drug Paraphernalia | 475 | 161 | 33.9% |
| 2203 - Manu/Delv/Poss Control Subs. | 822 | 268 | 32.6% |
| 2214 - Poss W/I To Manufacture | 3 | 1 | 33.3% |
| 2215 - Possession Of Ephedrine | 3 | 0 | 0.0% |
| 2301 - Viol Of Omb DWI Act 4th Offens | 56 | 12 | 21.4% |
| 2601 - Promoting Prostitution - 1st Deg | 1 | 0 | 0.0% |
| 2704 - Communicating False Alarm | 1 | 0 | 0.0% |
| 2707 - Stalking | 3 | 1 | 33.3% |
| 2901 - Poss. Firearm Certain Person | 38 | 9 | 23.7% |
| 2902 - Criminal Use Prohibited Weapon | 2 | 1 | 50.0% |
| 2907 - Poss. Of Firearm - School | 1 | 0 | 0.0% |
| 2910 - Poss. Firearm Incar. Person | 1 | 1 | 100.0% |
| 3001 - Criminal Attempt | 43 | 10 | 23.3% |
| 3003 - Criminal Conspiracy | 36 | 8 | 22.2% |
| 6501 - False Evid. Title Or Registra. | 1 | 1 | 100.0% |
| 6503 - Fail To Stop Acc. W/Inj/Death | 4 | 0 | 0.0% |
| 8001 - Discharge Firearm From Vehicle | 2 | 0 | 0.0% |
| 8002 - Engage In Viol Crim Group Act | 2 | 0 | 0.0% |
| 8004 - Simul. Poss Of Drugs/Firearm | 2 | 0 | 0.0% |

Recidivism Rates: Offense

Table 7 reflects the return rates as a result of the type of offense, for a select period of time. A variety of offenses were analyzed in order to understand the breadth and depth of recidivism rates by offense and the return to prison within a three-year time frame. For clarity, Table 7 denotes the offense category, the actual number of releases/returns for **2008**, and the actual numbers and percent of returns within three years for each category.