



# Arkansas Department of Correction

## 2003 and 2004 Recidivism Study

George Brewer, Research and Planning Administrator  
Brenda K. Wilson, Management Project Analyst

2007

### Highlights/Summary

1. Overall Recidivism rate has decreased from 51.8% in 2000 to 44.4% in 2004, a 7.4% variance (Table 1, pg. 2).
2. At a three-year post release, 2004 recidivism rates increased from (11.2%) the first 6 months to (44.4%) in three years, a 33.2% overall increase (Table 1, pg. 2).
3. Recidivism rates, over three years, for paroled inmates (45%) were significantly higher than that of discharged inmates (21.9%), in 2004 (Table 2, pg. 3).
4. For 2004 paroles and discharges, return rates increased significantly throughout the three-year post return (Table 2, pg. 3).
5. Parole Violators with New Sentence, within a three-year post release, accounted for 91% of the recidivists. (Table 3, pg. 4).
6. 2004 recidivism rates, for male offenders, show a three-year post return rate of 46.2% as compared to a return rate of 25.2% for females (Table 4, pg. 7).
7. An overall three-year post release for CY 2004 demonstrates that 46.5% of blacks and 43% of whites return to prison. The overall variance did not significantly differentiate. Recidivism rates for both races indicate very small changes during each year studied maintaining good reliability and validity across time (Table 5, pg. 9).
8. For 2004 releases and within a three-year post release and a return to prison, both males and females within the 25-34 age range demonstrated the highest total return rates (Table 6, Pg. 10 & 11).

Administrative Services Division, Research and Planning, Arkansas Department of Correction  
P.O. Box 8707, Pine Bluff, AR. 71602, Telephone (870) 267-6335

**Larry B. Norris, Director**

**Sheila Sharp, Assistant Director**

*Arkansas' Recidivism Study (Addendum)*

The **2003** and **2004** recidivism research is an addendum to the original 1997-1999 study produced in 2003 and the 2000 addendum produced in 2004 and the 2001 addendum produced in 2005 and the 2002 addendum produced in 2006. This addendum was prepared by the Arkansas Department of Correction's Research and Planning Division. The addendum reviews the return rates of inmates released from custody in **CY2003** and **CY2004**, as compared to prior years. The data for this research was obtained from the ADC electronic Offender Management Information System (eOMIS). If an individual was released **January 1, 2003** through **December 31, 2003**, and **January 1, 2004** through **December 31, 2004**, respectively, the data provided reflects returns for a full three-year post release. All charts and tables reflect a three-year post release review and utilized strictly for clarity and ease to the reader.

The study is categorized into return rates of six (6) months, one (1) year, and three (3) years, respectively. As with the 2002 addendum regarding a three-year post release of inmates produced in 2006, the ADC Research and Planning Section will continue to study, track and update trends in release/return rates annually.

*Overall Recidivism Rates*

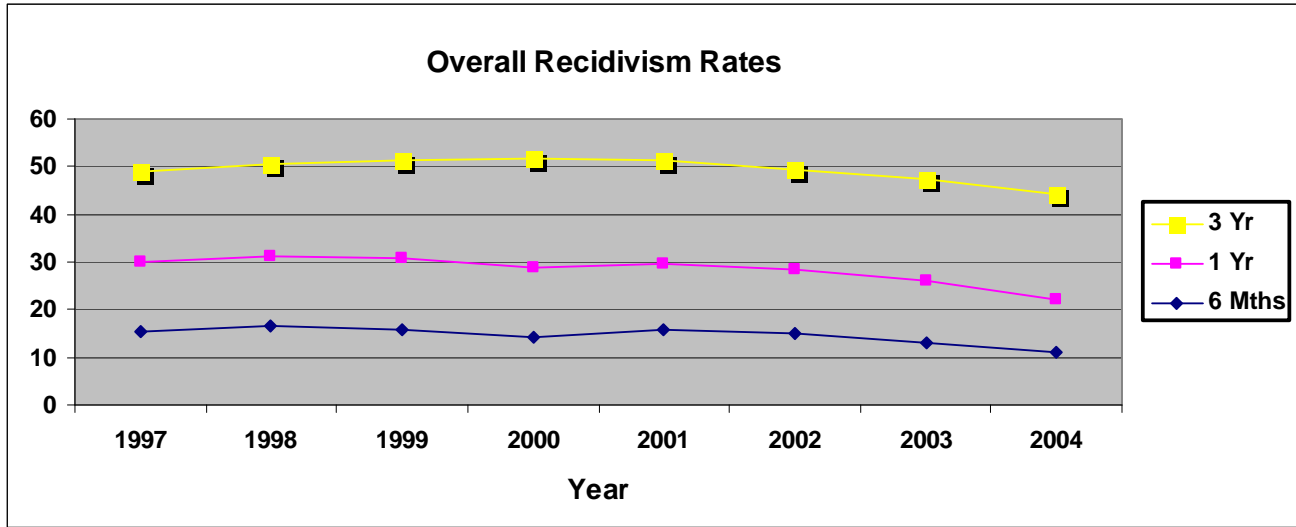
As demonstrated, table one (1) and figure one (1) show the overall ADC **2004** recidivism rates. The post-release period consists of six months, one-year, and three years, from **1997** through **2004**. In **2003**, there were a total of **6,135** inmates, and in **2004**, there were a total of **6244**, released from ADC (refer to table, year **2003** and **2004**). Within six months of release, **12.9%** for **2003** and **11.2%** for **2004**, returned to prison. Within one year of release, **25.9%** for **2003**, and **22.1%** for **2004**, returned and within three years there was an overall of **47.4%** for **2003** and **44.4%** for **2004** returned to prison. **ADC is experiencing an approximate 49.4% average return rate of inmates released from prison.**

*\* In all tables, the "number of releases", are the number of unduplicated releases in a given year used to generate recidivism rates. Table and Figure 1 do not specify the type of return. They demonstrate an overall return rate, regardless of reason.*

**Table 1**

| <u><b>Overall Recidivism Rates</b></u> |                              |                            |                            |                          |                          |                           |                           |                        |
|----------------------------------------|------------------------------|----------------------------|----------------------------|--------------------------|--------------------------|---------------------------|---------------------------|------------------------|
| <b>Release Year</b>                    | <b>Total Number Releases</b> | <b>% Returned 6 Months</b> | <b># Returned 6 Months</b> | <b>% Returned 1 Year</b> | <b># Returned 1 Year</b> | <b>% Returned 3 Years</b> | <b># Returned 3 Years</b> | <b>Total % Returns</b> |
| 1997                                   | 4668                         | 15.4%                      | 721                        | 29.9%                    | 1394                     | 49.0%                     | 2289                      | 49.0%                  |
| 1998                                   | 5434                         | 16.5%                      | 898                        | 31.2%                    | 1694                     | 52.0%                     | 2825                      | 50.7%                  |
| 1999                                   | 5330                         | 15.6%                      | 832                        | 30.6%                    | 1629                     | 51.4%                     | 2738                      | 51.4%                  |
| 2000                                   | 5872                         | 14.2%                      | 834                        | 29.0%                    | 1701                     | 51.8%                     | 3040                      | 51.8%                  |
| 2001                                   | 5962                         | 15.9%                      | 948                        | 29.7%                    | 1771                     | 51.4%                     | 3066                      | 51.4%                  |
| 2002                                   | 6015                         | 15.1%                      | 911                        | 28.5%                    | 1716                     | 49.4%                     | 2969                      | 49.4%                  |
| <b>2003</b>                            | <b>6135</b>                  | <b>12.9%</b>               | <b>792</b>                 | <b>25.9%</b>             | <b>1586</b>              | <b>47.4%</b>              | <b>2905</b>               | <b>47.4%</b>           |
| <b>2004</b>                            | <b>6244</b>                  | <b>11.2%</b>               | <b>698</b>                 | <b>22.1%</b>             | <b>1377</b>              | <b>44.4%</b>              | <b>2772</b>               | <b>44.4%</b>           |
| <b>Averages</b>                        | <b>5708</b>                  | <b>14.6%</b>               | <b>829</b>                 | <b>28.3%</b>             | <b>1609</b>              | <b>49.6%</b>              | <b>2826</b>               | <b>49.4%</b>           |

Figure 1



Recidivism Rates: Release Type

Table two (2) demonstrates recidivism rate by type of release. ADC releases inmates by parole with supervision, which is granted by the Parole Board or by discharge (max flat of sentence). In **2003** and **2004**, there were **5,958** inmates and **6,075** inmates, respectively, released by regular parole and **177** inmates and **169** inmates, respectively, discharged. Results indicate that within six months of release in **2003**, **788** or **13.2%** and in **2004**, **693** or **11.4%** inmates released returned as a result of parole violation, while only **4** or **2.3%** in **2003** and **5** or **3.0%** in **2004**, of inmates discharged returned with a new sentence. Total returns of parole releases from ADC demonstrate a **48%** in **2003** and a **45.0%** in **2004** recidivism rates, while discharges show a **24.3%** return rate in **2003** and a **21.9%** in **2004**.

Table 2

| Recidivism Rates By Type of Release |                   |                |                |           |                |           |                 |           |
|-------------------------------------|-------------------|----------------|----------------|-----------|----------------|-----------|-----------------|-----------|
| Year                                | Type of Release   | Total Releases | 6 Mths Returns | % Returns | 1 Year Returns | % Returns | 3 Years Returns | % Returns |
| 1997                                | Paroled - Regular | 3964           | 693            | 17.5%     | 1316           | 33.2%     | 2129            | 53.7%     |
|                                     | Discharge         | 692            | 28             | 4.0%      | 77             | 11.1%     | 204             | 29.5%     |
| 1998                                | Paroled - Regular | 4798           | 870            | 18.1%     | 1557           | 32.5%     | 2596            | 54.1%     |
|                                     | Discharge         | 624            | 27             | 4.3%      | 65             | 10.4%     | 156             | 25.0%     |
| 1999                                | Paroled - Regular | 4677           | 803            | 17.2%     | 1557           | 33.3%     | 2553            | 54.6%     |
|                                     | Discharge         | 643            | 28             | 4.4%      | 71             | 11.0%     | 184             | 28.6%     |
| 2000                                | Paroled - Regular | 5691           | 832            | 14.6%     | 1691           | 29.7%     | 3005            | 52.8%     |
|                                     | Discharge         | 181            | 2              | 1.1%      | 10             | 5.5%      | 35              | 19.3%     |
| 2001                                | Paroled - Regular | 5778           | 947            | 16.4%     | 1762           | 30.5%     | 3042            | 52.6%     |
|                                     | Discharge         | 184            | 1              | 0.5%      | 9              | 4.9%      | 24              | 13.0%     |
| 2002                                | Paroled - Regular | 5841           | 910            | 15.6%     | 1707           | 29.2%     | 2938            | 50.3%     |
|                                     | Discharge         | 174            | 1              | 0.6%      | 9              | 5.2%      | 31              | 17.8%     |
| 2003                                | Paroled - Regular | 5958           | 788            | 13.2%     | 1577           | 26.5%     | 2861            | 48.0%     |
|                                     | Discharge         | 177            | 4              | 2.3%      | 9              | 5.1%      | 43              | 24.3%     |
| 2004                                | Paroled - Regular | 6075           | 693            | 11.4%     | 1368           | 22.5%     | 2735            | 45.0%     |
|                                     | Discharge         | 169            | 5              | 3.0%      | 9              | 5.3%      | 37              | 21.9%     |
| Total Par Reg                       |                   | 36824          | 5074           | 13.8%     | 10958          | 29.8%     | 18998           | 51.6%     |
| Total Disch                         |                   | 2667           | 92             | 3.4%      | 250            | 9.4%      | 671             | 25.2%     |

**Recidivism Rates: (Return Types) Parolees and Discharges**

Table 3 and Figures (3, 3-1, 3-2, 3-3) show inmates that return to prison for parole violations with a new sentence(s), parole violators returning with a technical violation(s), and discharged (a reconvicted inmate) that returned to prison as a recommitment with a new sentence. Since the opening of the Technical Parole Violator Program, a return to prison for a technical violation while on parole has vastly decreased to no returns for releases of **2003** and **2004**, while a parole violation with a new sentence carries the majority of returns. **Even though a new conviction may also have a technical violation attached, the new conviction in most cases will supersede the technical violation making the new conviction the primary reason for return to prison.** In **2003** and **2004**, as reflected in Table 3 and Figure 3, within three years, **2,668** or **43.5%** and **2,535** or **40.6%**, respectively, of the parolees return to prison as a result of a parole violation with new sentence, **237** or **3.9%** and **237** or **3.8%**, respectively, of the discharged inmates returned as a result of a new charge and there were **zero (0)** returned as a result of a technical violation for both **2003** and **2004**.

**Table 3**

| <b>Recidivism Of Parolees And Discharges</b> |                 |                          |                |                |                |                |                |                |
|----------------------------------------------|-----------------|--------------------------|----------------|----------------|----------------|----------------|----------------|----------------|
| <b>Year</b>                                  | <b>Total</b>    | <b>Type of</b>           | <b>6 Mths</b>  | <b>%</b>       | <b>1 Year</b>  | <b>%</b>       | <b>3 Years</b> | <b>%</b>       |
|                                              | <b>Releases</b> | <b>Return</b>            | <b>Returns</b> | <b>Returns</b> | <b>Returns</b> | <b>Returns</b> | <b>Returns</b> | <b>Returns</b> |
| 1997                                         | 4668            | PV/New Sentence          | 179            | 3.8%           | 326            | 6.9%           | 512            | 10.9%          |
|                                              |                 | PV/Technical             | 511            | 10.9%          | 976            | 20.9%          | 1453           | 31.1%          |
|                                              |                 | Discharge - Reconviction | 31             | 0.7%           | 92             | 2.0%           | 324            | 7.0%           |
| 1998                                         | 5434            | PV/New Sentence          | 195            | 3.6%           | 378            | 7.0%           | 629            | 11.6%          |
|                                              |                 | PV/Technical             | 674            | 12.4%          | 1167           | 21.5%          | 1854           | 34.1%          |
|                                              |                 | Discharge - Reconviction | 29             | 0.5%           | 79             | 1.4%           | 272            | 5.0%           |
| 1999                                         | 5323            | PV/New Sentence          | 217            | 4.1%           | 388            | 7.3%           | 616            | 11.6%          |
|                                              |                 | PV/Technical             | 581            | 10.9%          | 1156           | 21.7%          | 1848           | 34.7%          |
|                                              |                 | Discharge - Reconviction | 30             | 0.6%           | 81             | 1.6%           | 309            | 5.9%           |
| 2000                                         | 5872            | PV/New Sentence          | 196            | 3.3%           | 424            | 7.2%           | 795            | 13.5%          |
|                                              |                 | PV/Technical             | 633            | 10.8%          | 1254           | 10.6%          | 2078           | 14.0%          |
|                                              |                 | Discharge - Reconviction | 5              | 0.1%           | 23             | 0.4%           | 167            | 2.9%           |
| 2001                                         | 5962            | PV/New Sentence          | 283            | 4.7%           | 540            | 9.1%           | 913            | 15.3%          |
|                                              |                 | PV/Technical             | 663            | 11.1%          | 1211           | 20.3%          | 1972           | 33.1%          |
|                                              |                 | Discharge - Reconviction | 2              | 0.0%           | 20             | 0.3%           | 181            | 3.0%           |
| 2002                                         | 6015            | PV/New Sentence          | 793            | 13.2%          | 1516           | 25.2%          | 2549           | 42.4%          |
|                                              |                 | PV/Technical             | 113            | 1.9%           | 174            | 2.9%           | 215            | 3.6%           |
|                                              |                 | Discharge - Reconviction | 5              | 0.1%           | 26             | 0.4%           | 205            | 3.4%           |
| 2003                                         | 6135            | PV/New Sentence          | 785            | 12.8%          | 1558           | 25.4%          | 2668           | 43.5%          |
|                                              |                 | Discharge - Reconviction | 7              | 0.1%           | 28             | 0.5%           | 237            | 3.9%           |
| 2004                                         | 6244            | PV/New Sentence          | 686            | 11.0%          | 1341           | 21.5%          | 2535           | 40.6%          |
|                                              |                 | Discharge - Reconviction | 12             | 0.2%           | 36             | 0.6%           | 237            | 3.8%           |
| <b>Total</b>                                 | <b>45653</b>    |                          | <b>6630</b>    | <b>14.5%</b>   | <b>12794</b>   | <b>28.0%</b>   | <b>22569</b>   | <b>49.4%</b>   |

Figure 3

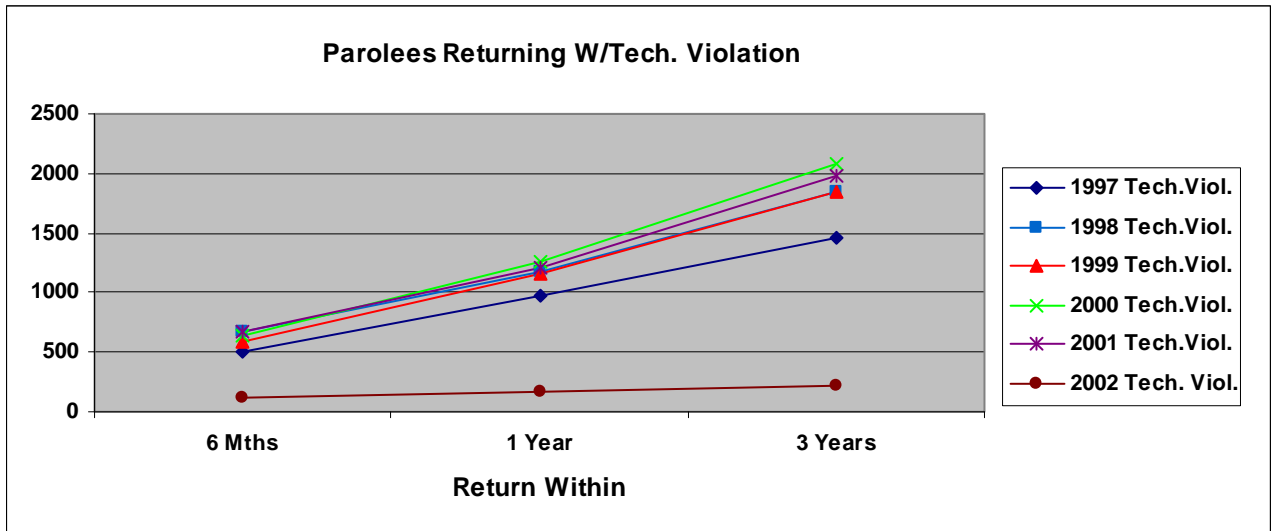


Figure 3-1

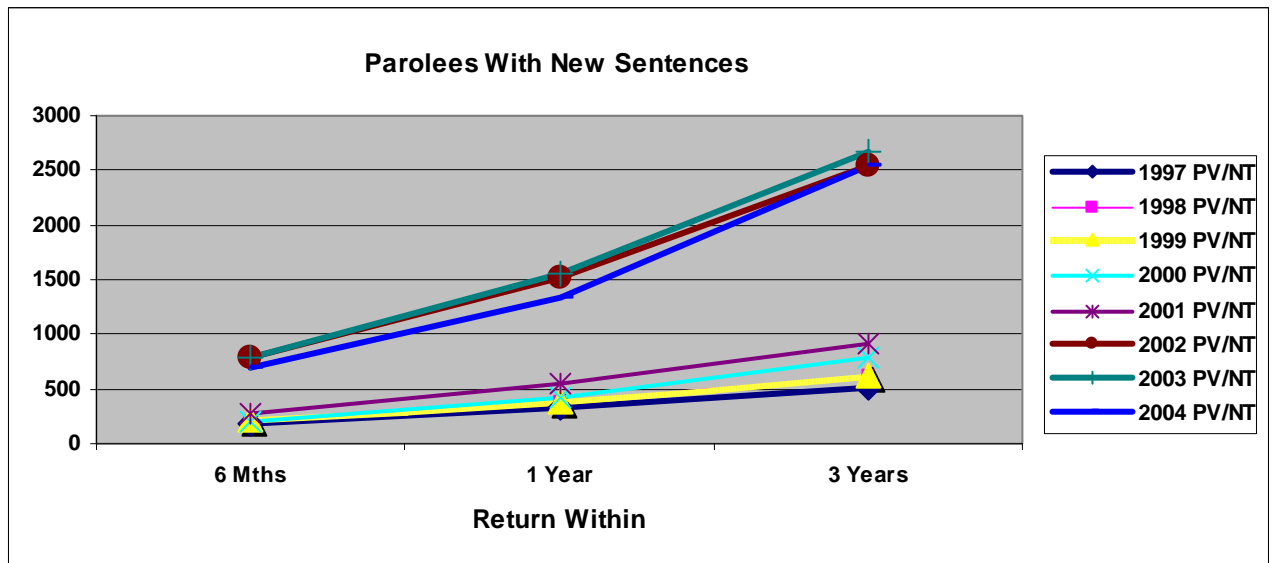


Figure 3-2

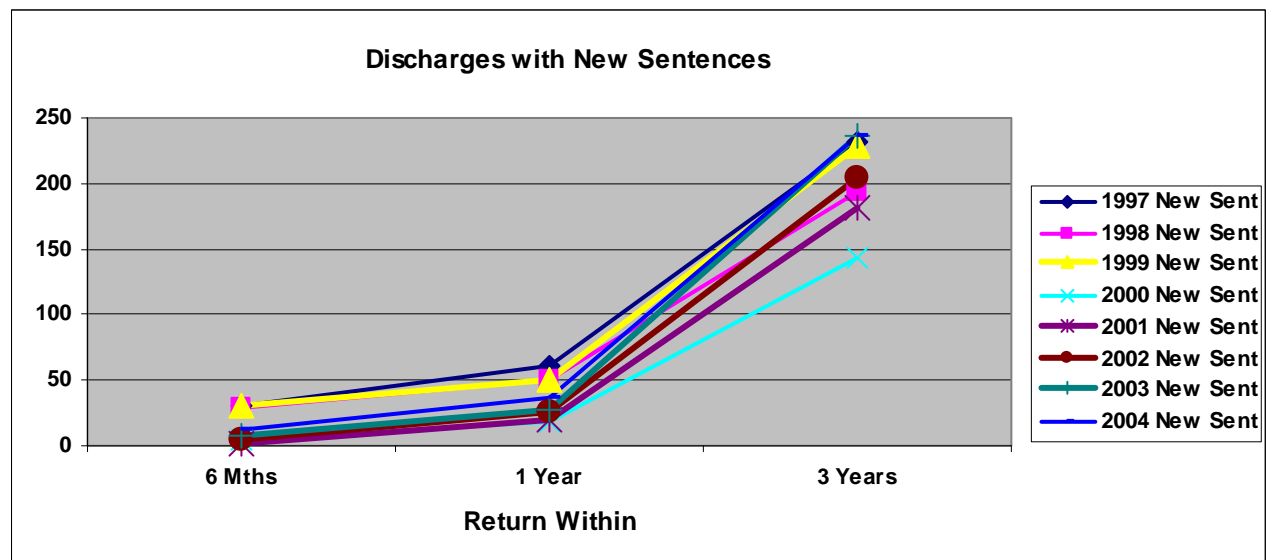


Figure 3-3

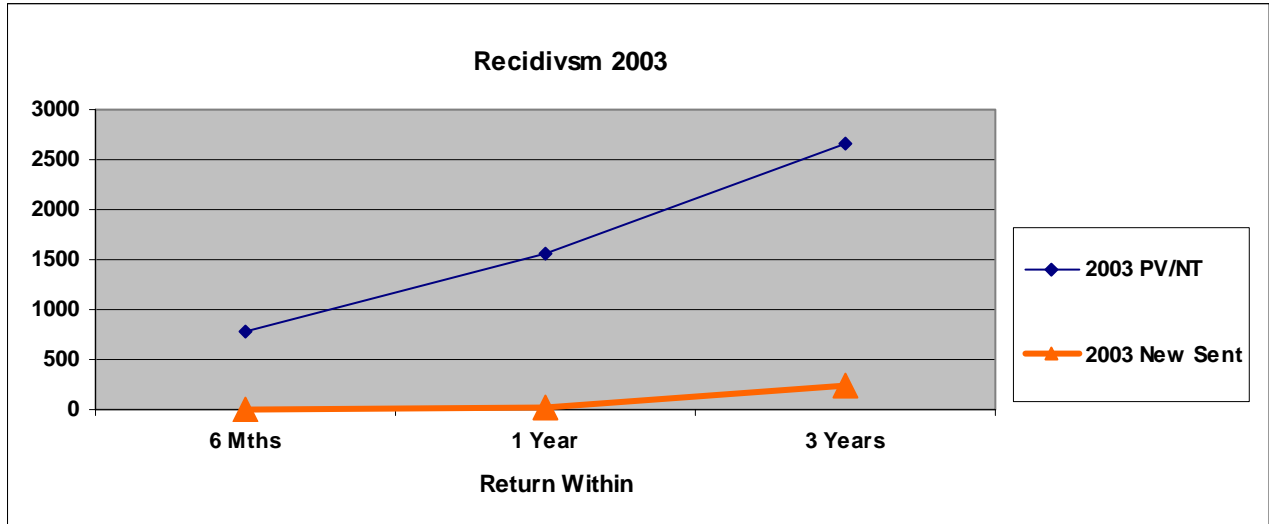
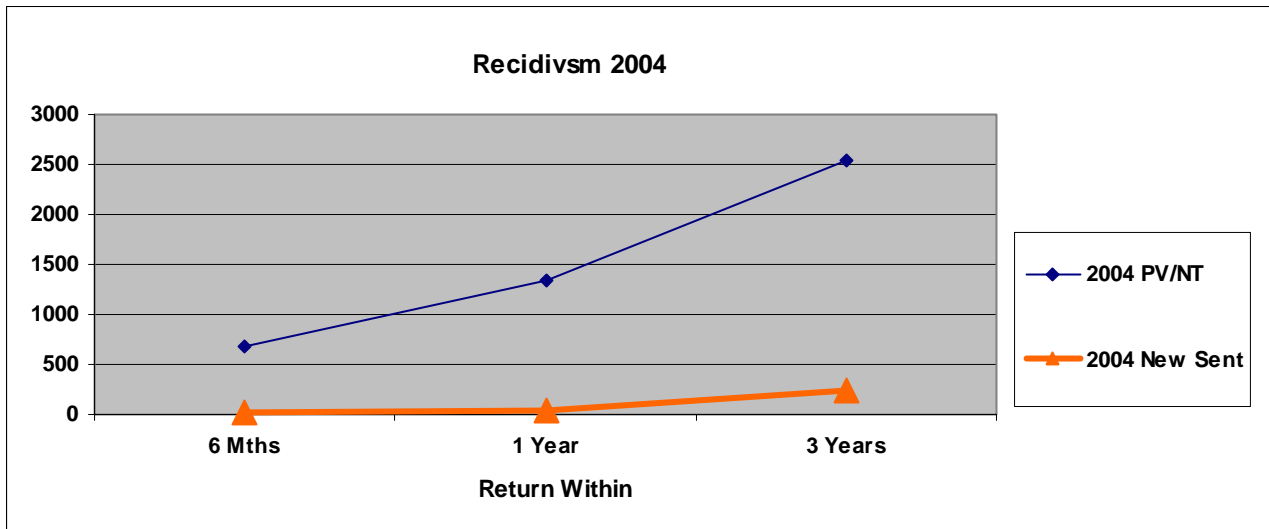


Figure 3-4



**Recidivism Rates: Gender**

Table 4 and Figures 4, 4-1, 4-2 exhibits recidivism rates by gender. In **2003** and **2004**, males increased in return rates over the three-year post release time frame. From six months to one-year, data demonstrated a fairly constant return rate for both males and females; however, by the end of the third year there was a significant increase in males returning to prison. Within each consecutive year, the overall return rate for males increased from **1997** to **2001**, while **2001** to **2004** reflects a **6.4 % decrease** in overall recidivism rates.

**Table 4**

| Recidivism Rates By Gender |        |          |         |         |         |         |         |         |               |
|----------------------------|--------|----------|---------|---------|---------|---------|---------|---------|---------------|
| Year                       | Gender | Total    | 6 month | %       | 1 Year  | %       | 3 Years | Total % | Total Inmates |
|                            |        | Releases | Return  | Returns | Returns | Returns | Returns | Returns | Not Returning |
| 1997                       | Female | 439      | 38      | 8.7%    | 94      | 21.4%   | 162     | 36.9%   | 277           |
|                            | Male   | 4229     | 683     | 16.2%   | 1300    | 30.7%   | 2127    | 50.3%   | 2102          |
| 1998                       | Female | 512      | 75      | 14.6%   | 123     | 24.0%   | 227     | 44.3%   | 285           |
|                            | Male   | 4922     | 823     | 16.7%   | 1501    | 30.5%   | 2528    | 51.4%   | 2394          |
| 1999                       | Female | 545      | 58      | 10.6%   | 115     | 21.1%   | 206     | 37.8%   | 339           |
|                            | Male   | 4785     | 774     | 16.2%   | 1514    | 31.6%   | 2532    | 52.9%   | 2253          |
| 2000                       | Female | 652      | 75      | 11.5%   | 158     | 24.2%   | 264     | 40.5%   | 388           |
|                            | Male   | 5220     | 759     | 14.5%   | 1543    | 29.6%   | 2766    | 53.0%   | 2454          |
| 2001                       | Female | 625      | 81      | 13.0%   | 140     | 22.4%   | 260     | 41.6%   | 365           |
|                            | Male   | 5337     | 867     | 16.2%   | 1631    | 30.6%   | 2806    | 52.6%   | 2531          |
| 2002                       | Female | 594      | 67      | 11.3%   | 134     | 22.6%   | 242     | 40.7%   | 320           |
|                            | Male   | 5421     | 844     | 15.6%   | 1582    | 29.2%   | 2727    | 50.3%   | 2426          |
| 2003                       | Female | 616      | 54      | 8.8%    | 111     | 18.0%   | 215     | 34.9%   | 401           |
|                            | Male   | 5519     | 738     | 13.4%   | 1475    | 26.7%   | 2690    | 48.7%   | 2829          |
| 2004                       | Female | 551      | 31      | 5.6%    | 56      | 10.2%   | 139     | 25.2%   | 413           |
|                            | Male   | 5693     | 667     | 11.7%   | 1321    | 23.2%   | 2633    | 46.2%   | 3060          |

**Figure 4**

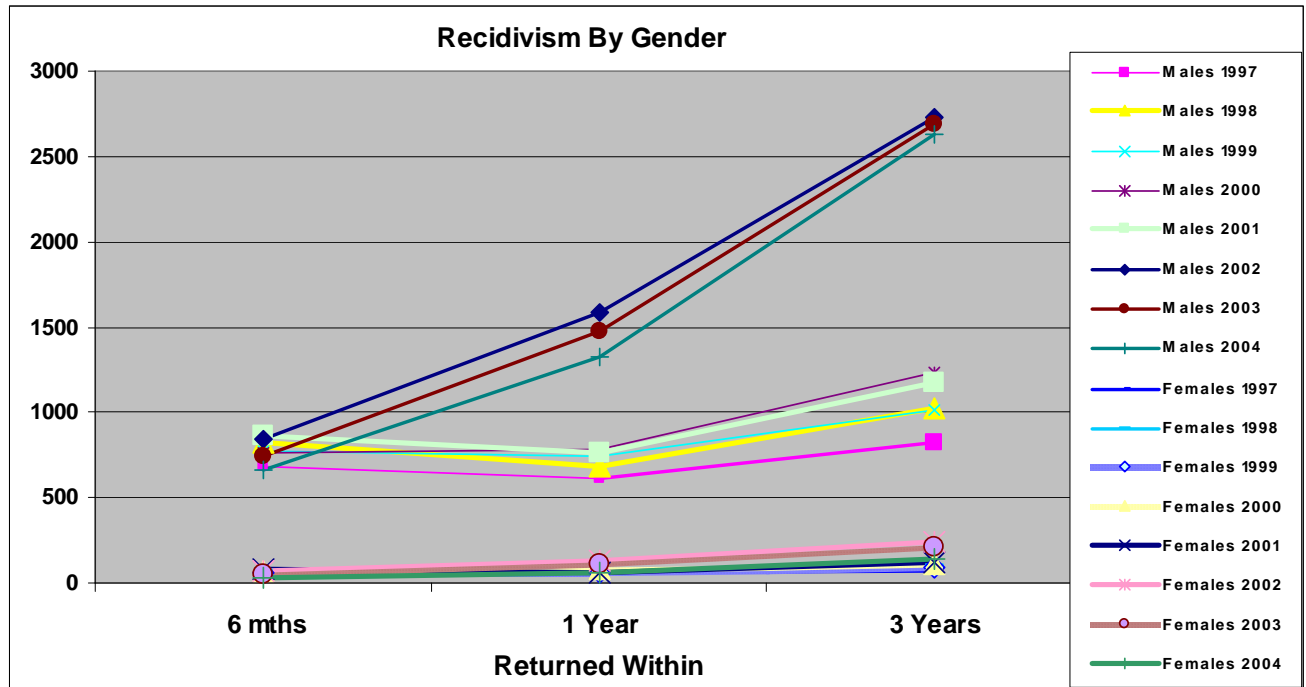


Figure 4-1

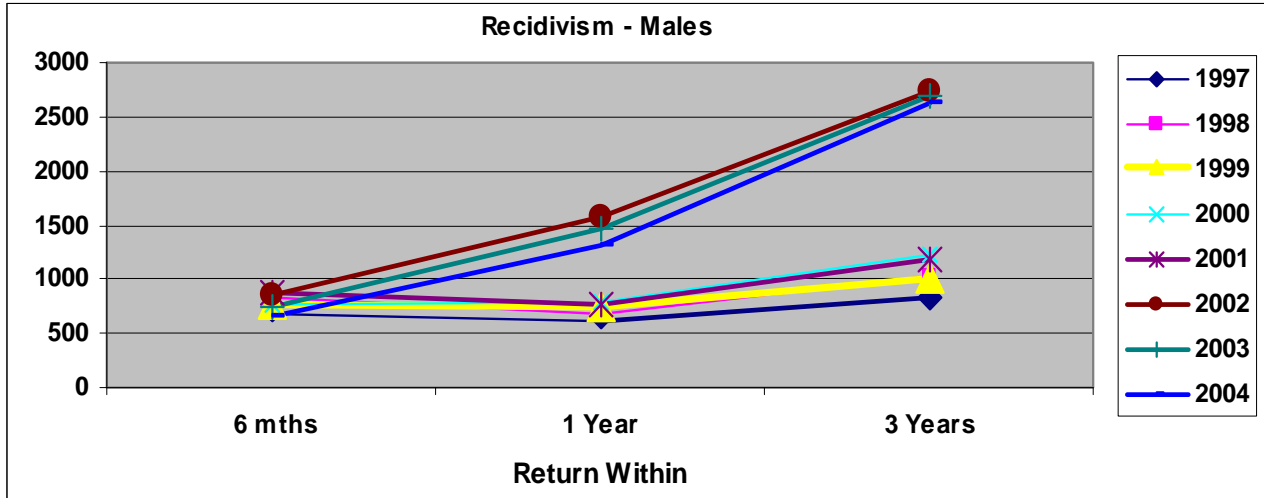
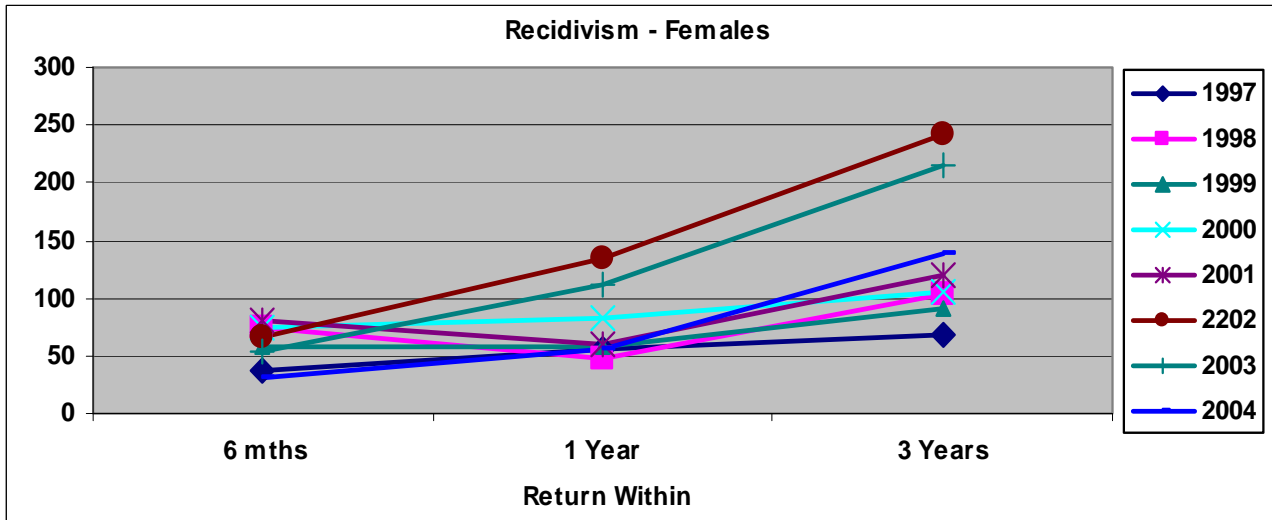


Figure 4-2



Recidivism Rates: Race

Recidivism rates were generated by race for **CY2003** and **CY2004**, respectively, and incorporated time frames of six (6) months, one-year, and three-years. Recidivism rates were based on three areas of ethnic diversity. Within the ADC, the population primarily consists of Caucasian and African-American racial designation, while only a small percentage consists of Hispanic and other. For this report, the Hispanic category consists of Cuban and Mexican racial designations, and the other category incorporates both Asian and Native American. The **2003** and **2004** recidivism addendum study incorporates Caucasian, African-American, Hispanic, and other racial designations to demonstrate recidivism rates by race as provided in Table 5. In **2003**, **3,304** and in **2004**, **3,450** Caucasian inmates were released. Within six (6) months, **467** or **14.1%** and **432** or **12.5%**, respectively, returned to prison. Within one (1) year, **883** or **26.7%** and **786** or **22.8%**, respectively, returned and within three (3) years, **1,531** or **46.3%** and **1,483** or **43.0%**, respectively, returned to prison. For **CY2003** and **CY2004**, African-American inmates have a slightly higher recidivism rate (**48.7%** vs. **46.3%**) and (**46.5%** vs. **43.0%**), respectively, than their Caucasian counterparts (see table 5).



Table 5

| 2004 Recidivism Rates By Race |          |          |         |         |         |         |         |         |
|-------------------------------|----------|----------|---------|---------|---------|---------|---------|---------|
| Year                          | Race     | Total    | 6 Month | %       | 1 Year  | %       | 3 Years | %       |
|                               |          | Releases | Returns | Returns | Returns | Returns | Returns | Returns |
| 1997                          | Black    | 2420     | 413     | 17.1%   | 795     | 32.9%   | 1268    | 52.4%   |
| 1997                          | Hispanic | 29       | 2       | 6.9%    | 4       | 13.8%   | 7       | 24.1%   |
| 1997                          | Other    | 16       | 0       | 0.0%    | 0       | 0.0%    | 2       | 12.5%   |
| 1997                          | White    | 2202     | 306     | 13.9%   | 595     | 27.0%   | 1013    | 46.0%   |
| 1998                          | Black    | 2685     | 481     | 17.9%   | 877     | 32.7%   | 1463    | 54.5%   |
| 1998                          | Hispanic | 25       | 5       | 20.0%   | 7       | 28.0%   | 8       | 32.0%   |
| 1998                          | Other    | 18       | 1       | 5.6%    | 4       | 22.2%   | 9       | 50.0%   |
| 1998                          | White    | 2706     | 411     | 15.2%   | 737     | 27.2%   | 1275    | 47.1%   |
| 1999                          | Black    | 2541     | 414     | 16.3%   | 801     | 31.5%   | 1362    | 53.6%   |
| 1999                          | Hispanic | 19       | 2       | 10.5%   | 3       | 15.8%   | 5       | 26.3%   |
| 1999                          | Other    | 13       | 0       | 0.0%    | 2       | 15.4%   | 3       | 23.1%   |
| 1999                          | White    | 2757     | 416     | 15.1%   | 822     | 29.8%   | 1367    | 49.6%   |
| 2000                          | Black    | 2756     | 401     | 14.6%   | 817     | 29.6%   | 1512    | 54.9%   |
| 2000                          | Hispanic | 66       | 6       | 9.1%    | 10      | 15.2%   | 16      | 24.2%   |
| 2000                          | Other    | 62       | 4       | 6.5%    | 5       | 8.1%    | 9       | 14.5%   |
| 2000                          | White    | 2988     | 423     | 14.2%   | 869     | 29.1%   | 1503    | 50.3%   |
| 2001                          | Black    | 2718     | 463     | 17.0%   | 839     | 30.9%   | 1476    | 54.3%   |
| 2001                          | Hispanic | 64       | 3       | 4.7%    | 10      | 15.6%   | 18      | 28.1%   |
| 2001                          | Other    | 45       | 3       | 6.7%    | 4       | 8.9%    | 8       | 17.8%   |
| 2001                          | White    | 3135     | 479     | 15.3%   | 918     | 29.3%   | 1564    | 49.9%   |
| 2002                          | Black    | 2618     | 408     | 15.6%   | 741     | 28.3%   | 1335    | 51.0%   |
| 2002                          | Hispanic | 75       | 5       | 6.7%    | 9       | 12.0%   | 13      | 17.3%   |
| 2002                          | Other    | 30       | 0       | 0.0%    | 3       | 10.0%   | 7       | 23.3%   |
| 2002                          | White    | 3292     | 497     | 15.1%   | 962     | 29.2%   | 1613    | 49.0%   |
| 2003                          | Black    | 2768     | 321     | 11.6%   | 691     | 25.0%   | 1349    | 48.7%   |
| 2003                          | Hispanic | 50       | 4       | 8.0%    | 11      | 22.0%   | 20      | 40.0%   |
| 2003                          | Other    | 13       | 0       | 0.0%    | 1       | 7.7%    | 5       | 38.5%   |
| 2003                          | White    | 3304     | 467     | 14.1%   | 883     | 26.7%   | 1531    | 46.3%   |
| 2004                          | Black    | 2711     | 255     | 9.4%    | 573     | 21.1%   | 1260    | 46.5%   |
| 2004                          | Hispanic | 64       | 10      | 15.6%   | 14      | 21.9%   | 24      | 37.5%   |
| 2004                          | Other    | 19       | 1       | 5.3%    | 4       | 21.1%   | 5       | 26.3%   |
| 2004                          | White    | 3450     | 432     | 12.5%   | 786     | 22.8%   | 1483    | 43.0%   |

### Recidivism Rates: Age

Age shows to be significantly related to recidivism within the ADC. An inmate's age at his/her last admission was significantly related to return to custody (See table 6). For males, this was fairly evident when reviewing age cohorts of **25-34** as primary, and **35-44** as secondary return age ranges. Females returning to prison also demonstrated increase returns in age ranges of **25-34** and **35-44** (See Figure 6).

Table 6

| <b>2003 Recidivism by Age (males)</b> |                |                 |                |                |                |
|---------------------------------------|----------------|-----------------|----------------|----------------|----------------|
| <b>Gender</b>                         | <b>AGE</b>     | <b>6 Months</b> | <b>1 Year</b>  | <b>3 Years</b> | <b>Total %</b> |
|                                       |                | <b>Returns</b>  | <b>Returns</b> | <b>Returns</b> | <b>Returns</b> |
| <b>Male</b>                           | <b>&lt;=17</b> | 0               | 0              | 0              | 0.0%           |
|                                       | <b>18 - 24</b> | 176             | 340            | 629            | 23.4%          |
|                                       | <b>25 - 34</b> | 302             | 596            | 1064           | 39.6%          |
|                                       | <b>35 - 44</b> | 197             | 414            | 755            | 28.1%          |
|                                       | <b>45 - 54</b> | 57              | 114            | 219            | 8.1%           |
|                                       | <b>55 - 64</b> | 5               | 9              | 19             | 0.7%           |
|                                       | <b>&gt;=65</b> | 1               | 2              | 4              | 0.1%           |
|                                       | <b>Total</b>   | 738             | 1475           | 2690           | 100.0%         |

Table 6.1

| <b>2003 Recidivism by Age (females)</b> |                  |                 |                |                |                |
|-----------------------------------------|------------------|-----------------|----------------|----------------|----------------|
| <b>Gender</b>                           | <b>AGE</b>       | <b>6 Months</b> | <b>1 Year</b>  | <b>3 Years</b> | <b>Total %</b> |
|                                         |                  | <b>Returns</b>  | <b>Returns</b> | <b>Returns</b> | <b>Returns</b> |
| <b>Female</b>                           | <b>&lt; = 17</b> | 0               | 0              | 0              | 0.0%           |
|                                         | <b>18 - 24</b>   | 6               | 10             | 18             | 8.4%           |
|                                         | <b>25 - 34</b>   | 27              | 58             | 108            | 50.2%          |
|                                         | <b>35 - 44</b>   | 14              | 32             | 71             | 33.0%          |
|                                         | <b>45 - 54</b>   | 6               | 10             | 17             | 7.9%           |
|                                         | <b>55 - 64</b>   | 1               | 1              | 1              | 0.5%           |
|                                         | <b>&gt;=65</b>   | 0               | 0              | 0              | 0.0%           |
|                                         | <b>Total</b>     | 54              | 111            | 215            | 100.0%         |

Table 6.2

| <b>2004 Recidivism by Age (males)</b> |                |                 |                |                |                |
|---------------------------------------|----------------|-----------------|----------------|----------------|----------------|
| <b>Gender</b>                         | <b>AGE</b>     | <b>6 Months</b> | <b>1 Year</b>  | <b>3 Years</b> | <b>Total %</b> |
|                                       |                | <b>Returns</b>  | <b>Returns</b> | <b>Returns</b> | <b>Returns</b> |
| <b>Male</b>                           | <b>&lt;=17</b> | 1               | 2              | 3              | 0.1%           |
|                                       | <b>18 - 24</b> | 216             | 401            | 717            | 26.3%          |
|                                       | <b>25 - 34</b> | 330             | 633            | 1050           | 38.5%          |
|                                       | <b>35 - 44</b> | 245             | 451            | 764            | 28.0%          |
|                                       | <b>45 - 54</b> | 50              | 90             | 181            | 6.6%           |
|                                       | <b>55 - 64</b> | 1               | 4              | 10             | 0.4%           |
|                                       | <b>&gt;=65</b> | 1               | 1              | 2              | 0.1%           |
|                                       | <b>Total</b>   | 844             | 1582           | 2727           | 100.0%         |

Table 6.3

| 2004 Recidivism by Age (females) |              |                  |                |                 |                 |
|----------------------------------|--------------|------------------|----------------|-----------------|-----------------|
| Gender                           | AGE          | 6 Months Returns | 1 Year Returns | 3 Years Returns | Total % Returns |
| Female                           | <= 17        | 0                | 0              | 1               | 0.4%            |
|                                  | 18 - 24      | 8                | 18             | 29              | 12.0%           |
|                                  | 25 - 34      | 26               | 52             | 106             | 43.8%           |
|                                  | 35 - 44      | 29               | 54             | 91              | 37.6%           |
|                                  | 45 -54       | 3                | 9              | 14              | 5.8%            |
|                                  | 55 - 64      | 1                | 1              | 1               | 0.4%            |
|                                  | >=65         | 0                | 0              | 0               | 0.0%            |
|                                  | <b>Total</b> | <b>67</b>        | <b>134</b>     | <b>242</b>      | <b>100.0%</b>   |

Figure 6

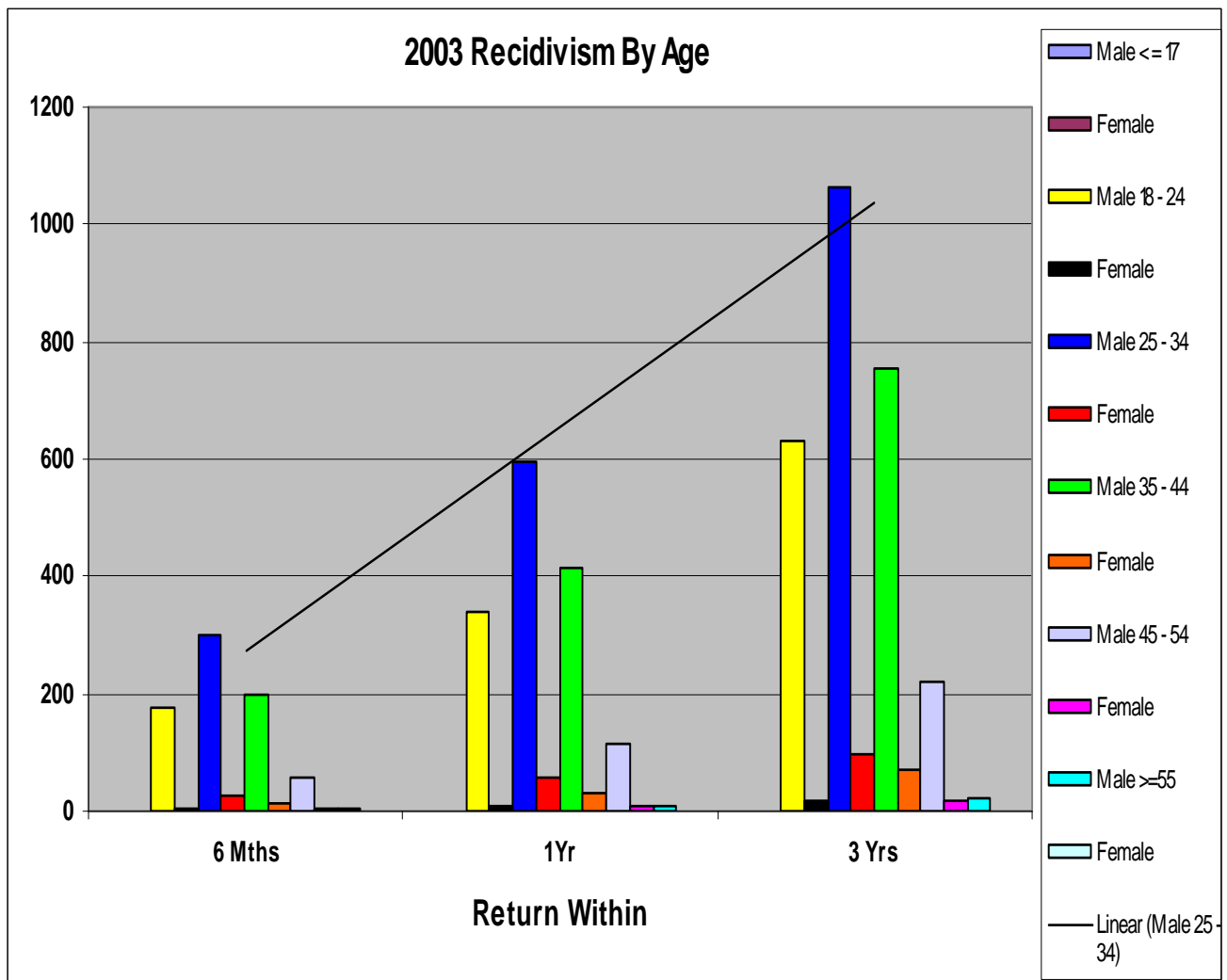
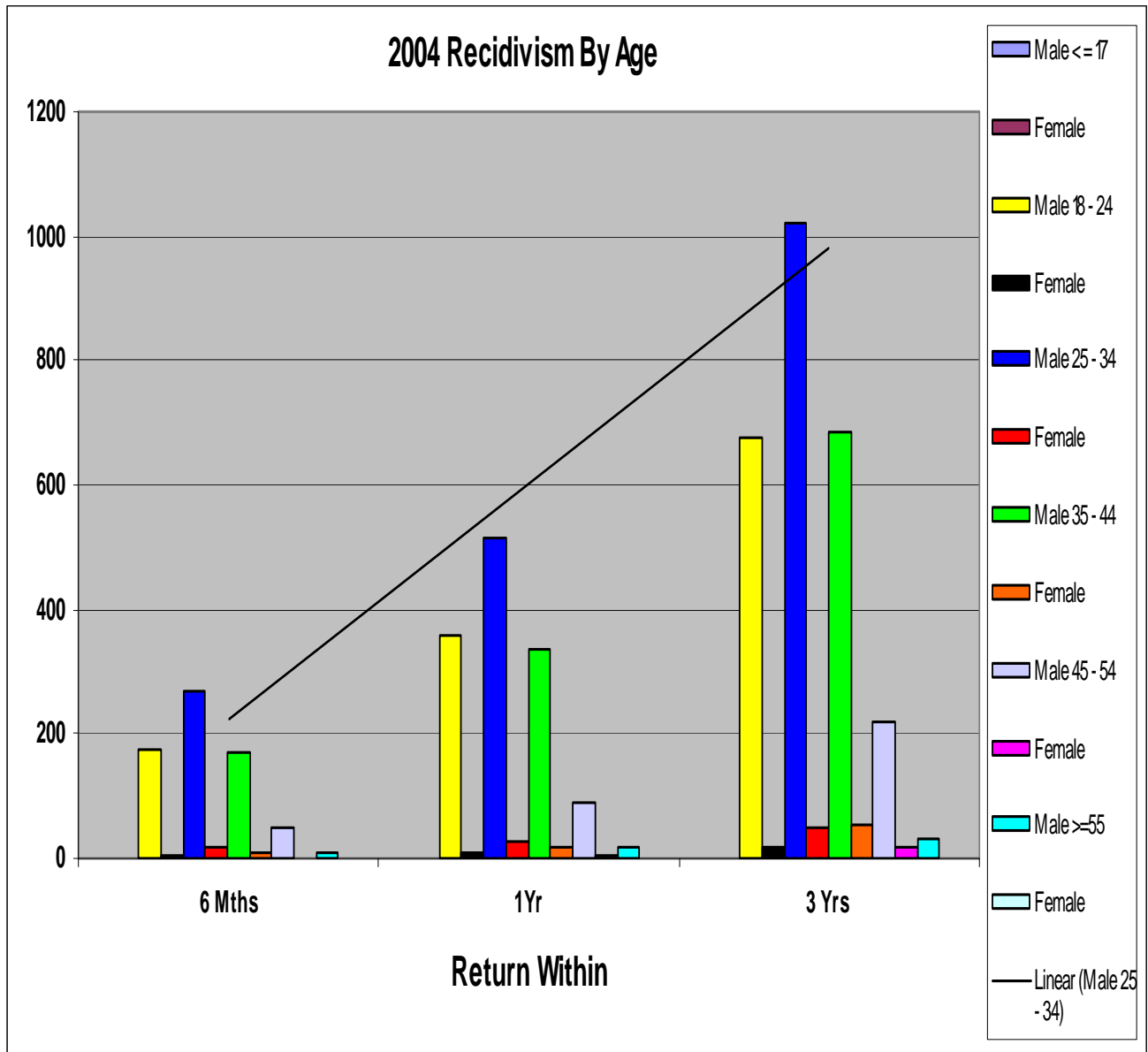


Figure 6.1



**Recidivism Rates: Offense**

Table Seven (7) reflects the return rates as a result of the type of offense, for a select period of time. A variety of offenses were analyzed in order to understand the breadth and depth of recidivism rates by offense and the return to prison within a three-year time frame. For clarity, Table 7 denotes the offense category, the actual number of releases/returns for the years **2003** and **2004**, the actual numbers and percent of returns within three (3) years for each category.

Table 7

| Three Year Recidivism Rates by Offense Category |               |                |        |               |            |        |
|-------------------------------------------------|---------------|----------------|--------|---------------|------------|--------|
| Offense Category                                | 2003 Releases | Ret w/in 3 yrs |        | 2004 Releases | Ret w/in 3 | yrs    |
| Absconding                                      | 3             | 0              | 0.0%   | 2             | 0          | 0.0%   |
| Abuse of Adults                                 | 0             | 0              | 0.0%   | 2             | 1          | 50.0%  |
| Accomplice                                      | 0             | 0              | 0.0%   | 1             | 0          | 0.0%   |
| Advertise Drug Paraphenalia                     | 470           | 212            | 45.1%  | 390           | 152        | 39.0%  |
| Agg. Assault on Corr. Employee                  | 1             | 0              | 0.0%   |               |            | 0.0%   |
| Agg. Assault on Family/Houshld                  | 7             | 5              | 71.4%  | 13            | 5          | 38.5%  |
| Aggravated Assault                              | 176           | 110            | 62.5%  | 168           | 84         | 50.0%  |
| Aggravated Robbery                              | 169           | 85             | 50.3%  | 136           | 51         | 37.5%  |
| Aiding Consumption of Offense                   | 1             | 1              | 100.0% |               |            | 0.0%   |
| Arson                                           | 29            | 10             | 34.5%  | 33            | 17         | 51.5%  |
| Battery 1st Degree                              | 142           | 59             | 41.5%  | 114           | 51         | 44.7%  |
| Battery 2nd Degree                              | 290           | 150            | 51.7%  | 204           | 94         | 46.1%  |
| Battery 3rd Degree                              | 2             | 1              | 50.0%  | 1             | 0          | 0.0%   |
| Breaking and Entering                           | 84            | 48             | 57.1%  | 137           | 80         | 58.4%  |
| Burglary                                        | 24            | 14             | 58.3%  | 150           | 97         | 64.7%  |
| Capital Murder                                  | 0             | 0              | 0.0%   | 3             | 1          | 33.3%  |
| Carnal Abuse 1st Degree                         | 15            | 9              | 60.0%  | 8             | 4          | 50.0%  |
| Carnal Abuse 2nd Degree                         | 4             | 2              | 50.0%  | 3             | 1          | 33.3%  |
| Carnal Abuse 3rd Degree                         | 19            | 8              | 42.1%  | 8             | 3          | 37.5%  |
| Commercial Burglary                             | 41            | 28             | 68.3%  | 130           | 71         | 54.6%  |
| Communicating False Alarm                       | 0             | 0              | 0.0%   | 1             | 0          | 0.0%   |
| Compounding                                     | 1             | 0              | 0.0%   | 0             | 0          | 0.0%   |
| Computer Fraud                                  | 0             | 0              | 0.0%   | 1             | 1          | 100.0% |
| Continuing Criminal Enterprise                  | 0             | 0              | 0.0%   | 1             | 1          | 100.0% |
| Criminal Attempt                                | 73            | 28             | 38.4%  | 129           | 51         | 39.5%  |
| Criminal Conspiracy                             | 52            | 26             | 50.0%  | 96            | 39         | 40.6%  |
| Criminal Mischief 1st Degree                    | 25            | 10             | 40.0%  | 38            | 19         | 50.0%  |
| Criminal Mischief 2nd Degree                    | 6             | 3              | 50.0%  | 4             | 3          | 75.0%  |
| Criminal Solicitation                           | 3             | 0              | 0.0%   | 0             | 0          | 0.0%   |
| Criminal Use Prohibited Weapon                  | 0             | 0              | 0.0%   | 2             | 0          | 0.0%   |
| Defrauding Secured Creditors                    | 0             | 0              | 0.0%   | 1             | 1          | 100.0% |
| Discharge Firearm From Vehicle                  | 5             | 2              | 40.0%  | 8             | 1          | 12.5%  |
| Dist/Poss/View Sex Explicit                     | 0             | 0              | 0.0%   | 3             | 0          | 0.0%   |
| Domestic Battering 1st Degree                   | 15            | 4              | 26.7%  | 5             | 3          | 60.0%  |
| Domestic Battering 2nd Degree                   | 20            | 12             | 60.0%  | 30            | 11         | 36.7%  |
| Domestic Battering 3rd Degree                   | 59            | 33             | 55.9%  | 44            | 24         | 54.5%  |
| Duty to Give Info & Render Aid                  | 1             | 0              | 0.0%   | 0             | 0          | 0.0%   |
| Emphy, Auth child<17 Sex Perf                   | 0             | 0              | 0.0%   | 1             | 1          | 100.0% |
| Endanger Welf. Of Incompet. 1st Deg.            | 1             | 0              | 0.0%   | 0             | 0          | 0.0%   |
| Endanger Welfare Minor 1st Degree               | 1             | 1              | 100.0% | 2             | 1          | 50.0%  |
| Engage in Viol Crim Group Act                   | 0             | 0              | 0.0%   | 5             | 2          | 40.0%  |
| Escape 1st Degree                               | 1             | 1              | 100.0% | 2             | 1          | 50.0%  |
| Escape 2nd Degree                               | 10            | 6              | 60.0%  | 12            | 8          | 66.7%  |
| Exposing One to HIV                             | 5             | 1              | 20.0%  | 2             | 0          | 0.0%   |
| Fail to Register Child/Sex Offender             | 8             | 3              | 37.5%  | 8             | 3          | 37.5%  |
| Fail Stop Acc Inj/Death                         | 1             |                | 0.0%   | 4             | 3          | 75.0%  |
| Fail, to Keep Records Dist Drg                  | 34            | 17             | 50.0%  | 35            | 9          | 25.7%  |
| Failure to Appear                               | 50            | 22             | 44.0%  | 53            | 26         | 49.1%  |
| False Imprisonment 1st Degree                   | 28            | 17             | 60.7%  | 22            | 11         | 50.0%  |
| Filing a False Report                           | 5             | 4              | 80.0%  | 3             | 0          | 0.0%   |
| Financial Identity Fraud                        | 2             | 1              | 50.0%  | 4             | 2          | 50.0%  |
| Fleeing                                         | 28            | 12             | 42.9%  | 35            | 17         | 48.6%  |
| Forgery                                         | 243           | 130            | 53.5%  | 285           | 149        | 52.3%  |
| Fraud Use of Credit Card                        | 5             | 4              | 80.0%  | 15            | 10         | 66.7%  |
| Furnishing Prohibited Articles                  | 5             | 2              | 40.0%  | 7             | 5          | 71.4%  |
| Hindering Apprehension or Proc                  | 7             | 3              | 42.9%  | 10            | 3          | 30.0%  |

| Three Year Recidivism Rates by Offense Category |               |                |        |               |            |        |
|-------------------------------------------------|---------------|----------------|--------|---------------|------------|--------|
| Offense Category                                | 2003 Releases | Ret w/in 3 yrs |        | 2004 Releases | Ret w/in 3 | yrs    |
| Hot Check Violation                             | 84            | 31             | 36.9%  | 97            | 29         | 29.9%  |
| Incest                                          | 6             | 2              | 33.3%  | 12            | 2          | 16.7%  |
| Inciting Riot                                   | 1             | 0              | 0.0%   | 0             | 0          | 0.0%   |
| Indescent Exposure                              | 2             | 0              | 0.0%   | 0             | 0          | 0.0%   |
| Interference With Custody                       | 0             | 0              | 0.0%   | 1             | 1          | 100.0% |
| Interfering With Law Enf Offic                  | 0             | 0              | 0.0%   | 1             | 0          | 0.0%   |
| Intro Cont Subs Body/Another                    | 0             | 0              | 0.0%   | 1             | 0          | 0.0%   |
| Keeping a Gambling House                        | 0             | 0              | 0.0%   | 1             | 0          | 0.0%   |
| Kidnapping                                      | 25            | 11             | 44.0%  | 15            | 8          | 53.3%  |
| Manslaughter                                    | 54            | 27             | 50.0%  | 33            | 13         | 39.4%  |
| Manu/Del/Poss Control Substance                 | 909           | 420            | 46.2%  | 1268          | 511        | 40.3%  |
| Murder 1st Degree                               | 57            | 14             | 24.6%  | 50            | 10         | 20.0%  |
| Murder 2nd Degree                               | 72            | 29             | 40.3%  | 59            | 21         | 35.6%  |
| Negligent Homicide                              | 14            | 4              | 28.6%  | 8             | 2          | 25.0%  |
| Non-Support                                     | 19            | 8              | 42.1%  | 12            | 5          | 41.7%  |
| Obtain Signature by Deception                   | 0             | 0              | 0.0%   | 1             | 0          | 0.0%   |
| Offense Com. Presence of Child                  | 1             | 1              | 100.0% |               |            | 0.0%   |
| Permit Child Abuse                              | 1             |                | 0.0%   | 1             | 0          | 0.0%   |
| Poss Anhyd Ammon Unlaw/Container                | 3             |                | 0.0%   | 2             | 2          | 100.0% |
| Poss Firearm Certain Person                     | 36            | 14             | 38.9%  | 73            | 35         | 47.9%  |
| Poss. Of Firearm - School                       | 2             | 1              | 50.0%  |               |            | 0.0%   |
| Poss of Defaced Firearm                         | 1             |                | 0.0%   | 2             | 0          | 0.0%   |
| Poss W/Intent to Mfg                            | 5             | 2              | 40.0%  | 5             | 0          | 0.0%   |
| Possession of Drug Paraphernal                  | 2             | 1              | 50.0%  | 0             | 0          | 0.0%   |
| Possession of Ephedrine                         | 6             | 3              | 50.0%  | 5             | 2          | 40.0%  |
| Promoting Prostitution 1st Degree               | 0             | 0              | 0.0%   | 1             | 0          | 0.0%   |
| Rape                                            | 50            | 22             | 44.0%  | 64            | 22         | 34.4%  |
| Reckless Burning                                | 1             | 0              | 0.0%   | 4             | 3          | 75.0%  |
| Residential Burglary                            | 134           | 82             | 61.2%  | 211           | 130        | 61.6%  |
| Robbery                                         | 504           | 328            | 65.1%  | 406           | 246        | 60.6%  |
| Sexual Abuse 1st Degree                         | 104           | 47             | 45.2%  | 95            | 33         | 34.7%  |
| Sexual Assault                                  | 14            | 6              | 42.9%  | 21            | 7          | 33.3%  |
| Sexual Indecency With a Child                   | 0             | 0              | 0.0%   | 1             | 1          | 100.0% |
| Sexual Solicitation of A Child                  | 6             | 4              | 66.7%  | 7             | 2          | 28.6%  |
| Sexual Solicitation of A Child                  | 0             | 0              | 0.0%   | 4             | 1          | 25.0%  |
| Simul Poss of Drugs/Firearm                     | 3             | 1              | 33.3%  | 13            | 2          | 15.4%  |
| Stalking                                        | 1             | 1              | 100.0% | 2             | 0          | 0.0%   |
| Tampering With Physical Evidence                | 4             | 2              | 50.0%  | 2             | 2          | 100.0% |
| Terroristic Act                                 | 23            | 10             | 43.5%  | 32            | 12         | 37.5%  |
| Terroristic Threatening 1st Deg                 | 104           | 60             | 57.7%  | 78            | 43         | 55.1%  |
| Theft By Receiving                              | 242           | 153            | 63.2%  | 267           | 154        | 57.7%  |
| Theft of Leased Property                        | 10            | 3              | 30.0%  | 5             | 1          | 20.0%  |
| Theft of Prop Lost, Mislaid, Del                | 1             | 1              | 100.0% |               | 0          | 0.0%   |
| Theft of Property                               | 1379          | 864            | 62.7%  | 905           | 509        | 56.2%  |
| Theft of Public Benefits                        | 1             | 1              | 100.0% | 3             | 1          | 33.3%  |
| Theft of Services                               | 2             | 2              | 100.0% | 3             | 1          | 33.3%  |
| Trans, Distr. Mat.Deplctg Child                 | 2             |                | 0.0%   | 2             | 0          | 0.0%   |
| Unlawful Copy/Sale of Record                    | 1             | 0              | 0.0%   | 0             | 0          | 0.0%   |
| Use of Anothers Prop for Crime                  | 0             | 0              | 0.0%   | 2             | 0          | 0.0%   |
| Use of Communication Facility                   | 1             | 1              | 100.0% |               | 0          | 0.0%   |
| Viol of a Minor 1st Degree                      | 0             | 0              | 0.0%   | 2             | 0          | 0.0%   |
| Viol Omb DWI Act 4th Offense                    | 70            | 23             | 32.9%  | 95            | 35         | 36.8%  |
| Violation of Medicaid Fraud AC                  | 1             | 0              | 0.0%   | 0             | 0          | 0.0%   |
| Violation of Minor - 1st Degree                 | 1             | 0              | 0.0%   | 0             | 0          | 0.0%   |
| Violation of Minor - 2nd Degree                 | 4             | 2              | 50.0%  | 0             | 0          | 0.0%   |
| Wife Battering 1st Degree                       | 1             | 0              | 0.0%   | 0             | 0          | 0.0%   |
| Worker's Comp Fraud                             | 0             | 0              | 0.0%   | 1             | 0          | 0.0%   |

