



Arkansas Department of Correction

2002 Recidivism Study

George Brewer, Research and Planning Administrator
Brenda K. Wilson, Management Project Analyst

2006

Highlights/Summary

1. Overall Recidivism rate decreased from 51.4% in 2001 to 49.4% in 2002. A 2.0% variance (Table 1, pg. 2).
2. At a three-year post release, 2002 recidivism rates increased from (15.1%) the first 6 months to (49.4%) in three years, a 34.3% overall increase (Table 1, pg. 2).
3. Recidivism rates, over three years, for paroled inmates (50.3%) were significantly higher than that of discharged inmates (17.8%), in 2002 (Table 2, pg. 3).
4. For 2002 paroles and discharges, return rates increased significantly throughout the three-year post return (Table 2, pg. 3).
5. Parole Violators with New Sentence, within a three-year post release, accounted for 42.4% of all inmates returned to prison (Table 3, pg. 4).
6. Technical parole violators decreased by more than 83% as a result of the technical violator program. (Table 3, pg. 4).
7. A review of 2002 releases and a return to prison within three years demonstrate that 42.4% of all inmates return for parole violations with new time as compared to 3.6% who return with a technical parole violation, while only 3.4% of discharged inmates return for reconviction (Table 3, pg. 4).
8. 2002 recidivism rates, for male offenders, show a three-year post return rate of 50.3% as compared to a return rate of 40.7% for females (Table 4, pg. 6).
9. An overall three-year post release for CY 2002 demonstrates that 51% of blacks and 49% of whites return to prison. The overall variance did not significantly differentiate. Recidivism rates for both races indicate very small changes during each year studied maintaining good reliability and validity across time (Table 5, pg. 8).
10. For 2002 releases and within a three-year post release and a return to prison, both males and females within the 25-34 cohort range demonstrated the highest total return age range rates (Table 6, Pg. 9).

Administrative Services Division, Research and Planning, Arkansas Department of Correction
P.O. Box 8707, Pine Bluff, AR. 71602, Telephone (870) 267-6335

Larry B. Norris, Director

Sheila Sharp, Assistant Director

Arkansas' Recidivism Study (Addendum)

The **2002** recidivism research is an addendum to the original 1997-1999 study produced in 2003 and the 2000 addendum produced in 2004 and the 2001 addendum produced in 2005. This addendum was prepared by the Arkansas Department of Correction's Research and Planning Division. The addendum reviews the return rates of inmates released from custody in **CY 2002**, as compared to prior years. The data for this research was obtained from the ADC electronic Offender Management Information System (eOMIS). If an individual was released **January 1, 2002** through **December 31, 2002**, the data provided reflects returns for a full three-year post release to **December 2005**. All charts and tables reflect a three-year post release review and utilized strictly for clarity and ease to the reader.

The study is categorized into return rates of six (6) months, one (1) year, and three (3) years, respectively. As with the 2001 addendum regarding a three-year post release of inmates produced in 2005, the ADC Research and Planning Section will continue to study, track and update trends in release/return rates annually.

Overall Recidivism Rates

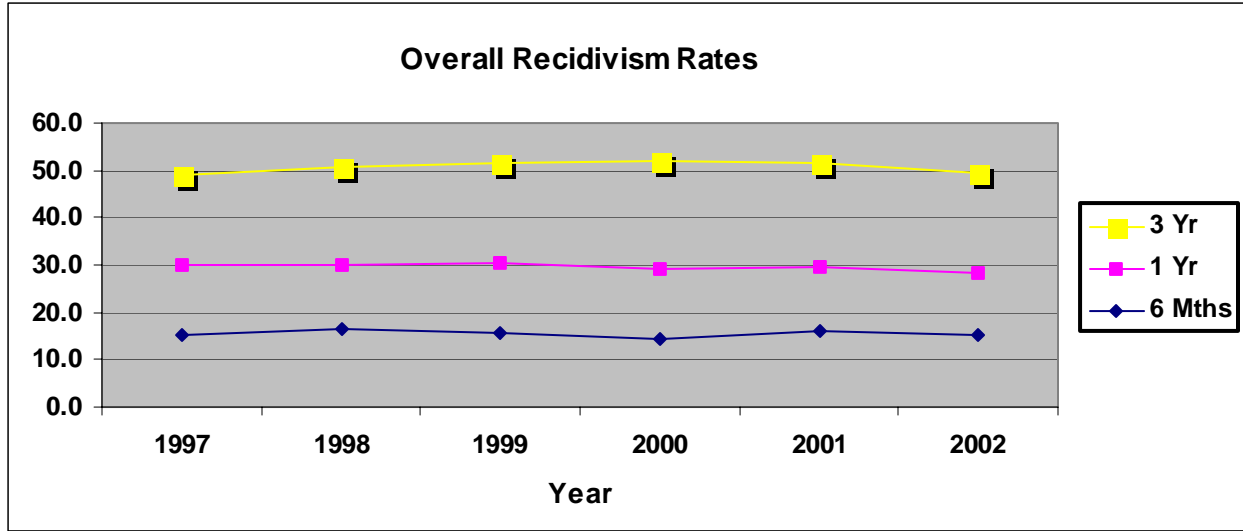
As demonstrated, table one (1) and figure one (1) show the overall ADC **2002** recidivism rates. The post-release period consists of six months, one-year, and three years, from **1997** through **2002**. In **2002**, there were a total of **6,015** inmates released from ADC (refer to table, year **2002**). Within six months of release, **15.1%** returned to prison. Within one year of release, **28.5%** returned and within three years there was an overall of **49.4%** returned to prison. **ADC is experiencing an approximate 50% return rate of inmates released from prison.**

** In all tables, the "number of releases", are the number of unduplicated releases in a given year used to generate recidivism rates. Table and Figure 1 do not specify the type of return. They demonstrate an overall return rate, regardless of reason.*

Table 1

Overall Recidivism Rates								
Release	Total Number	% Returned	# Returned	% Returned	# Returned	% Returned	# Returned	Total %
Year	Releases	6 Months	6 Months	1 Year	1 Year	3 Years	3 Years	Returns
1997	4668	15.4%	721	29.9%	1394	49.0%	2289	49.0%
1998	5434	16.5%	898	31.2%	1694	52.0%	2825	50.7%
1999	5330	15.6%	832	30.6%	1629	51.4%	2738	51.4%
2000	5872	14.2%	834	29.0%	1701	51.8%	3040	51.8%
2001	5962	15.9%	948	29.7%	1771	51.4%	3066	51.4%
2002	6015	15.1%	911	28.5%	1716	49.4%	2969	49.4%

Figure 1



Recidivism Rates: Release Type

Table two (2) demonstrates recidivism rate by type of release. ADC releases inmates by parole with supervision, which is granted by the Parole Board or by discharge (max flat of sentence). In **2002**, there were **5,841** inmates released by regular parole and **174** inmates discharged. Results indicate that within six months of release in **2002**, **910 or 15.6%** inmates released returned as a result of parole violation, while only **1 or 0.5%** of inmates discharged returned with a new sentence. Total returns for **2002** parole releases from ADC demonstrate a **50.3%** recidivism rate, while discharges show a **17.8%** return rate.

Table 2

Recidivism Rates By Type of Release								
Year	Type of Release	Total Releases	6 Mths Returns	% Returns	1 Year Returns	% Returns	3 Years Returns	% Returns
1997	Paroled - Regular	3964	693	17.5%	1316	33.2%	2129	53.7%
	Discharge	692	28	4.0%	77	11.1%	204	29.5%
1998	Paroled - Regular	4798	870	18.1%	1557	32.5%	2596	54.1%
	Discharge	624	27	4.3%	65	10.4%	156	25.0%
1999	Paroled - Regular	4677	803	17.2%	1557	33.3%	2553	54.6%
	Discharge	643	28	4.4%	71	11.0%	184	28.6%
2000	Paroled - Regular	5691	832	14.6%	1691	29.7%	3005	52.8%
	Discharge	181	2	1.1%	10	5.5%	35	19.3%
2001	Paroled - Regular	5778	947	16.4%	1762	30.5%	3042	52.6%
	Discharge	184	1	0.5%	9	4.9%	24	13.0%
2002	Paroled - Regular	5841	910	15.6%	1707	29.26%	2938	50.3%
	Discharge	174	1	0.6%	9	6.2%	31	17.8%
Total Paroled - Regular		30749	5055	16.4%	9590	31.2%	16263	52.9%
Total Discharged		2498	87	3.5%	241	5.6%	634	25.4 %

Recidivism Rates: (Return Types) Parolees and Discharges

Table 3 and Figures (3, 3-1, 3-2, 3-3) show inmates that return to prison for parole violations with a new sentence(s), parole violators returning with a technical violation(s), and discharged (a reconvicted inmate) that returned to prison as a recommitment with a new sentence. Since the opening of the Technical Parole Violator Program, a return to prison for a technical violation while on parole has vastly decreased, while a parole violation with a new sentence has more than doubled. **Even though a new conviction may also have a technical violation attached, the new conviction in most cases will supersede the technical violation making the new conviction the primary reason for return to prison.** In 2002, as reflected in Table 3 and Figure 3, within three years, **2,549 or 42.4%** of the parolees return to prison as a result of a parole violation with new sentence, **215 or 3.6%** returned as a result of a technical violation, and **205 or 3.4%** of the discharged inmates returned as a result of a new charge.

Table 3

Recidivism Of Parolees And Discharges								
Year	Total	Type of	6 Mths	%	1 Year	%	3 Years	%
	Releases	Return	Returns	Returns	Returns	Returns	Returns	Returns
1997	4668	PV/New Sentence	179	3.8%	326	6.9%	512	10.9%
		PV/Technical	511	10.9%	976	20.9%	1453	31.1%
		Discharge - Reconviction	31	0.7%	92	2.0%	324	7.0%
1998	5434	PV/New Sentence	195	3.6%	378	7.0%	629	11.6%
		PV/Technical	674	12.4%	1167	21.5%	1854	34.1%
		Discharge - Reconviction	29	0.5%	79	1.4%	272	5.0%
1999	5323	PV/New Sentence	217	4.1%	388	7.3%	616	11.6%
		PV/Technical	581	10.9%	1156	21.7%	1848	34.7%
		Discharge - Reconviction	30	0.6%	81	1.6%	309	5.9%
2000	5872	PV/New Sentence	196	3.3%	424	7.2%	795	13.5%
		PV/Technical	633	10.8%	1254	10.6%	2078	14.0%
		Discharge - Reconviction	5	0.1%	23	0.4%	167	2.9%
2001	5962	PV/New Sentence	283	4.7%	540	9.1%	913	15.3%
		PV/Technical	663	11.1%	1211	20.3%	1972	33.1%
		Discharge - Reconviction	2	0.0%	20	0.3%	181	3.0%
2002	6015	PV/New Sentence	793	13.2%	1516	25.2%	2549	42.4%
		PV/Technical	113	1.9%	174	2.9%	215	3.6%
		Discharge - Reconviction	5	0.1%	26	0.4%	205	3.4%
Total	33274		5140	15.4%	9831	29.5%	16892	50.8%

Figure 3

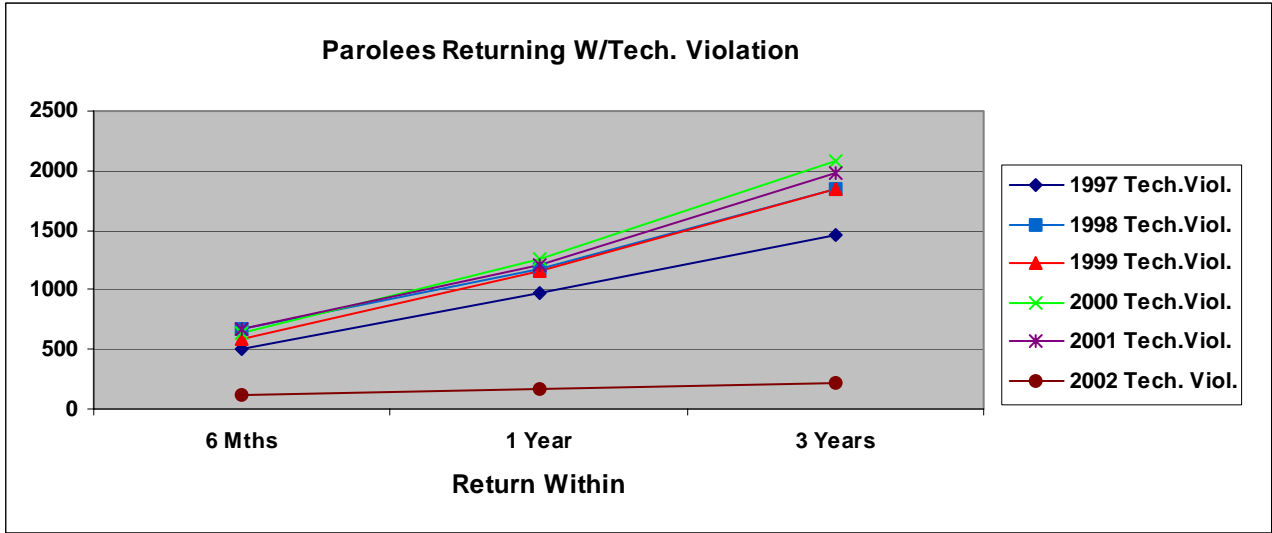


Figure 3-1

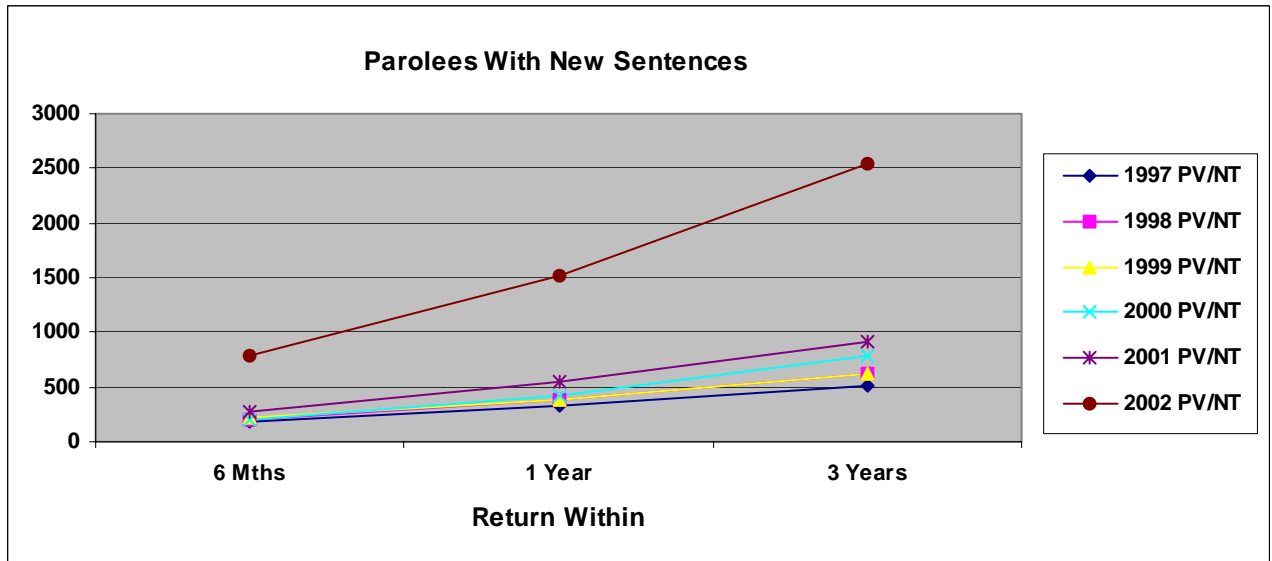


Figure 3-2

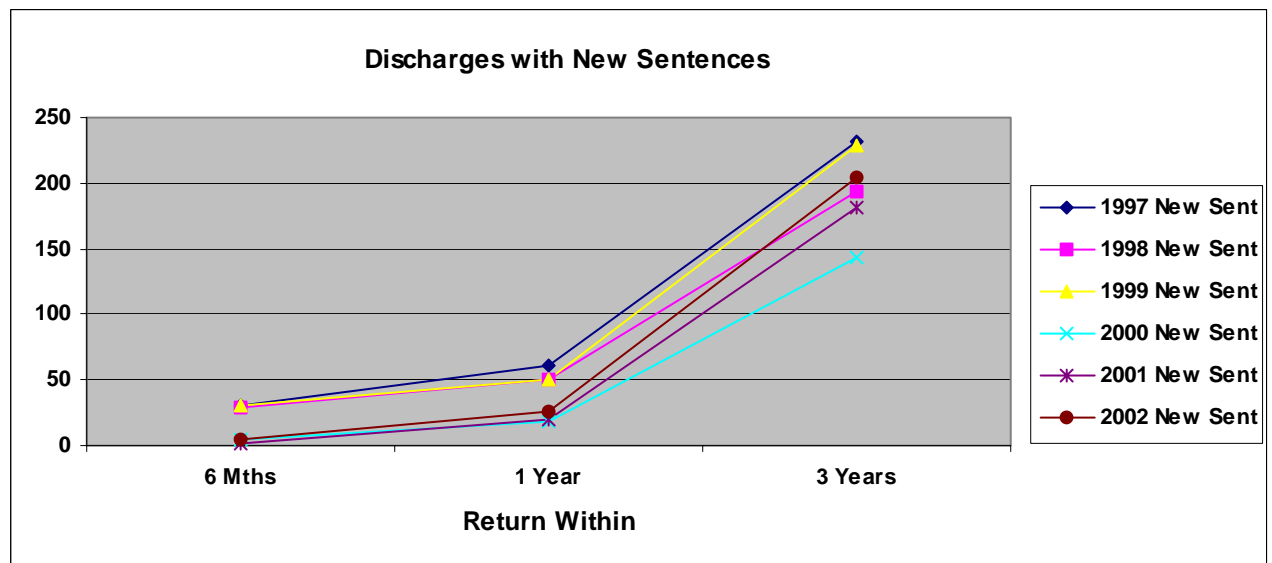
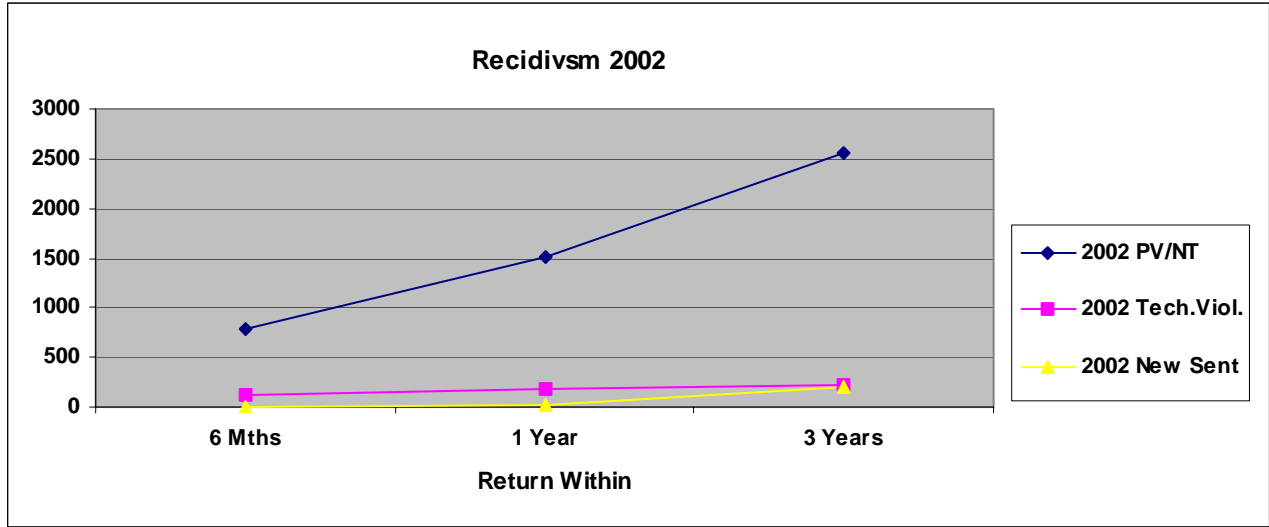


Figure 3-3



Recidivism Rates: Gender

Table 4 and Figures 4, 4-1, 4-2 exhibits recidivism rates by gender. In **2002**, males increased in return rates over the three-year post release time frame. From six months to one-year, data demonstrated a fairly constant return rate for both males and females; however, by the end of the third year there was a significant increase in males returning to prison. As a result, females, (slightly under two thirds), unlike their male counterparts, who parole and/or discharge their time do not return to prison, where nearly half of all males return.

Table 4

Recidivism Rates By Gender									
Year	Gender	Total	6 month	%	1 Year	%	3 Years	Total %	Total Inmates
		Releases	Return	Returns	Returns	Returns	Returns	Returns	Not Returning
1997	Female	439	38	8.7%	94	21.4%	162	36.9%	277
	Male	4229	683	16.2%	1300	30.7%	2127	50.3%	2102
1998	Female	512	75	14.6%	123	24.0%	227	44.3%	285
	Male	4922	823	16.7%	1501	30.5%	2528	51.4%	2394
1999	Female	545	58	10.6%	115	21.1%	206	37.8%	339
	Male	4785	774	16.2%	1514	31.6%	2532	52.9%	2253
2000	Female	652	75	11.5%	158	24.2%	264	40.5%	388
	Male	5220	759	14.5%	1543	29.6%	2766	53.0%	2454
2001	Female	625	81	13.0%	140	22.4%	260	41.6%	365
	Male	5337	867	16.2%	1631	30.6%	2806	52.6%	2531
2002	Female	594	67	11.3%	134	22.6%	242	40.7%	320
	Male	5421	844	15.6%	1582	29.2%	2727	50.3%	2426

Figure 4

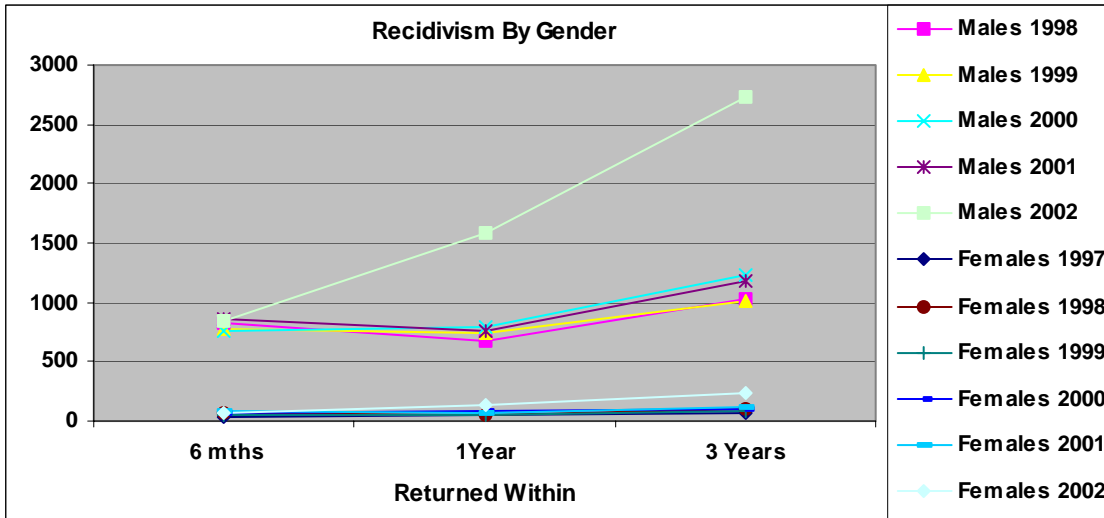


Figure 4-1

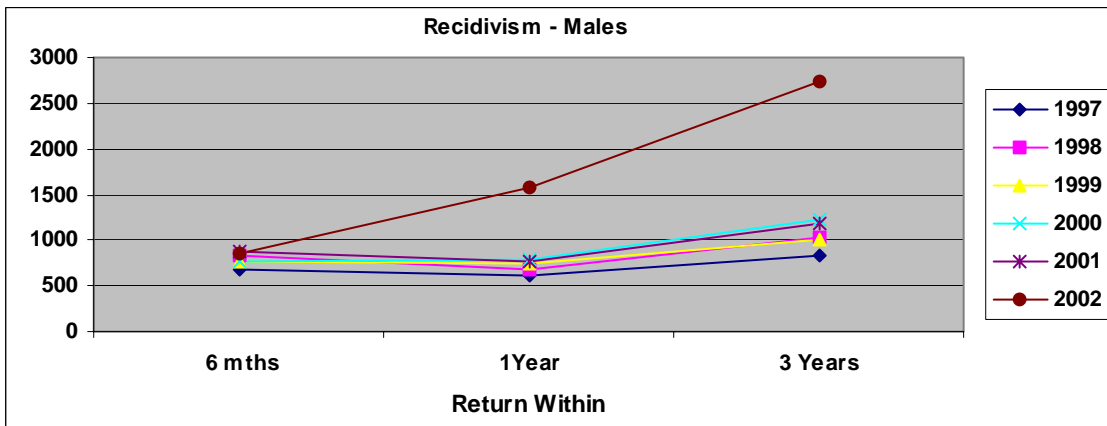
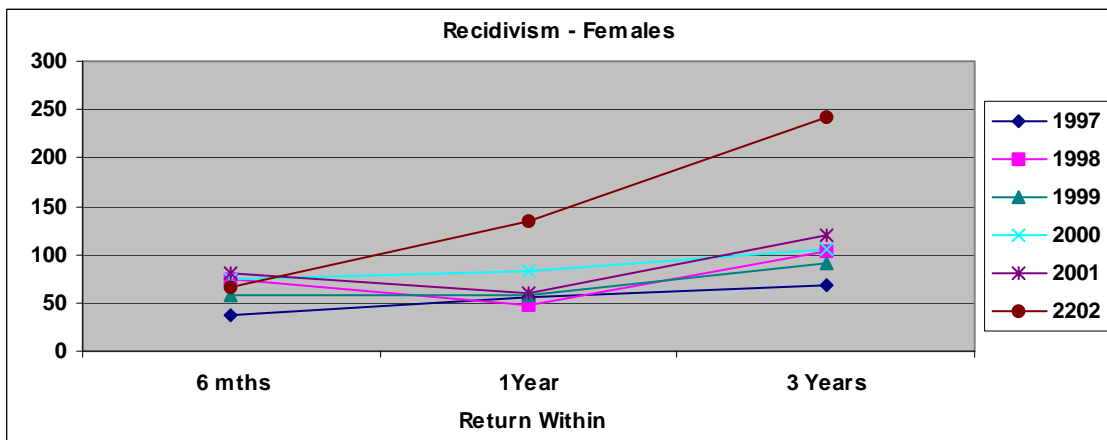


Figure 4-2



Recidivism Rates: Race

Recidivism rates were generated by race for **CY2002** and incorporated time frames of six (6) months, one-year, and three-years. Recidivism rates were based on three areas of ethnic diversity. Within the ADC, the population primarily consists of Caucasian and African-American racial designation, while only a small percentage consists of Hispanic and other. For this report, the Hispanic category consists of Cuban and Mexican racial designations, and the other category incorporates both Asian and Native American. The **2002** recidivism addendum study incorporates Caucasian, African-American, Hispanic, and other racial designations to demonstrate recidivism rates by race as provided in Table 5. In **2002**, **3,292** Caucasian inmates were released. Within six (6) months, **497 or 15.1%** returned to prison. Within one (1) year, **962 or 29.2%** returned and within three (3) years, **1,613 or 49.0%** returned to prison. For **CY 2002**, African-American inmates have a slightly higher recidivism rate (**51% vs. 49%**) than their Caucasian counterparts (see table 5).

Table 5

2002 Recidivism Rates By Race								
Year	Race	Total	6 Month	%	1 Year	%	3 Years	%
		Releases	Returns	Returns	Returns	Returns	Returns	Returns
1997	Black	2420	413	17.1%	795	32.9%	1268	52.4%
1997	Hispanic	29	2	6.9%	4	13.8%	7	24.1%
1997	Other	16	0	0.0%	0	0.0%	2	12.5%
1997	White	2202	306	13.9%	595	27.0%	1013	46.0%
1998	Black	2685	481	17.9%	877	32.7%	1463	54.5%
1998	Hispanic	25	5	20.0%	7	28.0%	8	32.0%
1998	Other	18	1	5.6%	4	22.2%	9	50.0%
1998	White	2706	411	15.2%	737	27.2%	1275	47.1%
1999	Black	2541	414	16.3%	801	31.5%	1362	53.6%
1999	Hispanic	19	2	10.5%	3	15.8%	5	26.3%
1999	Other	13	0	0.0%	2	15.4%	3	23.1%
1999	White	2757	416	15.1%	822	29.8%	1367	49.6%
2000	Black	2756	401	14.6%	817	29.6%	1512	54.9%
2000	Hispanic	66	6	9.1%	10	15.2%	16	24.2%
2000	Other	62	4	6.5%	5	8.1%	9	14.5%
2000	White	2988	423	14.2%	869	29.1%	1503	50.3%
2001	Black	2718	463	17.0%	839	30.9%	1476	54.3%
2001	Hispanic	64	3	4.7%	10	15.6%	18	28.1%
2001	Other	45	3	6.7%	4	8.9%	8	17.8%
2001	White	3135	479	15.3%	918	29.3%	1564	49.9%
2002	Black	2618	408	15.6%	741	28.3%	1335	51.0%
2002	Hispanic	75	5	6.7%	9	12.0%	13	17.3%
2002	Other	30	0	0.0%	3	10.0%	7	23.3%
2002	White	3292	497	15.1%	962	29.2%	1613	49.0%

Recidivism Rates: Age

Age shows to be significantly related to recidivism within the ADC. An inmate's age at his/her last admission was significantly related to return to custody (See table 6). For males, this was fairly evident when reviewing age cohorts of **25-34** as primary, and **35-44** as secondary return age ranges. Females returning to prison also demonstrated increase returns in age ranges of **25-34** and **35-44** (See Figure 6). Within each consecutive year, the overall return rate for males increased from to 1997 to 1999. From 1997 to 1998, there was a 1.1% increase in return rates, 1998 to 1999 showed a 1.6% increase, while from **2001 to 2002** reflects a **3.1 %** decrease in overall recidivism rates.

Table 6

2002 Recidivism by Age (male)					
Gender	AGE	6 Months	1 Year	3 Years	Total %
		Returns	Returns	Returns	Returns
Male	<=17	1	2	3	0.1%
	18 - 24	216	401	717	26.3%
	25 - 34	330	633	1050	38.5%
	35 - 44	245	451	764	28.0%
	45 -54	50	90	181	6.6%
	55 - 64	1	4	10	0.4%
	>=65	1	1	2	0.1%
	Total	844	1582	2727	100.0%

Table 6 Cont.

2002 Recidivism by Age (female)					
Gender	AGE	6 Months	1 Year	3 Years	Total %
		Returns	Returns	Returns	Returns
Female	< = 17	0	0	1	0.4%
	18 - 24	8	18	29	12.0%
	25 - 34	26	52	106	43.8%
	35 - 44	29	54	91	37.6%
	45 -54	3	9	14	5.8%
	55 - 64	1	1	1	0.4%
	>=65	0	0	0	0.0%
	Total	67	134	242	100.0%

Figure 6

