



Arkansas Department of Correction

2001 Recidivism Study

Michael D. Cannon, Ph.D., Research and Planning Administrator
Brenda K. Wilson, Management Project Analyst

2005

Highlights/Summary

1. Overall Recidivism rate decreased from 51.8% in 2000 to 51.4% in 2001. A 0.4% variance (Table 1, pg. 2).
2. At a three-year post release, 2001 recidivism rates increased from (15.9%) the first 6 months to (51.4%) in three years, a 35.5% overall increase (Table 1, pg. 2).
3. Recidivism rates, over three years, for paroled inmates (52.6%) were significantly higher than that of discharged inmates (12.5%), in 2001 (Table 2, pg. 3).
4. For 2001 paroles and discharges, return rates increased significantly through out the three-year post return (Table 2, pg. 3).
5. Technical parole violators, within a three-year post release, accounted for 33.1% of all inmates returned to prison (Table 3, pg. 4).
6. Technical parole violators more than doubled parole violators with a new sentence and far surpassed the return rate of discharged inmates reconvicted on a new sentence for the 3-year period of inmates released in CY2001 (Table 3, pg. 4).
7. A review of 2001 releases and a return to prison within three years demonstrate that 33.1% of all inmates return for technical parole violations as compared to 15.3% who return with a parole violation incorporating new time, while only 3.0% of discharged inmates return for reconviction (Table 3, pg. 4).
8. 2001 recidivism rates, for male offenders, show a three-year post return rate of 52.6% as compared to a return rate of 41.6% for females (Table 4, pg. 6).
9. An overall three-year post release for CY 2001 demonstrates that 54% of blacks and 50% of whites return to prison. The overall variance did not significantly differentiate. Recidivism rates for both races indicate very small changes during each year studied maintaining good reliability and validity across time (Table 5, pg. 8).
10. For 2001 releases and within a three-year post release and a return to prison, both males and females within the 25-34 cohort range demonstrated the highest total return age range rates (Table 6, Pg. 9).
11. Recidivism rates are shown for all the number of offenses released and number of returns in that specific category (Table 7, pg. 11 and 12).

Administrative Services Division, Research and Planning, Arkansas Department of Correction
P.O. Box 8707, Pine Bluff, AR. 71602, Telephone (870) 267-6335

Larry B. Norris, Director

Sheila Sharp, Assistant Director

Arkansas' Recidivism Study (Addendum)

The **2001** recidivism research is an addendum to the original 1997-1999 study produced in 2003 and the 2000 addendum produced in 2004. This addendum was prepared by the Arkansas Department of Correction's Research and Planning Division. The addendum reviews the return rates of inmates released from custody in **CY 2001**, as compared to prior years. The data for this research was obtained from the ADC electronic Offender Management Information System (eOMIS). If an individual was released **January 1, 2001** through **December 31, 2001**, the data provided reflects returns for a full three-year post release to **December 2004**. All charts and tables reflect a three-year post release review and utilized strictly for clarity and ease to the reader.

The study is categorized into return rates of six (6) months, one (1) year, and three (3) years, respectively. As with the 2000 addendum regarding a three-year post release of inmates produced in 2004, the ADC Research and Planning Section will continue to study, track and update trends in release/return rates annually.

Overall Recidivism Rates

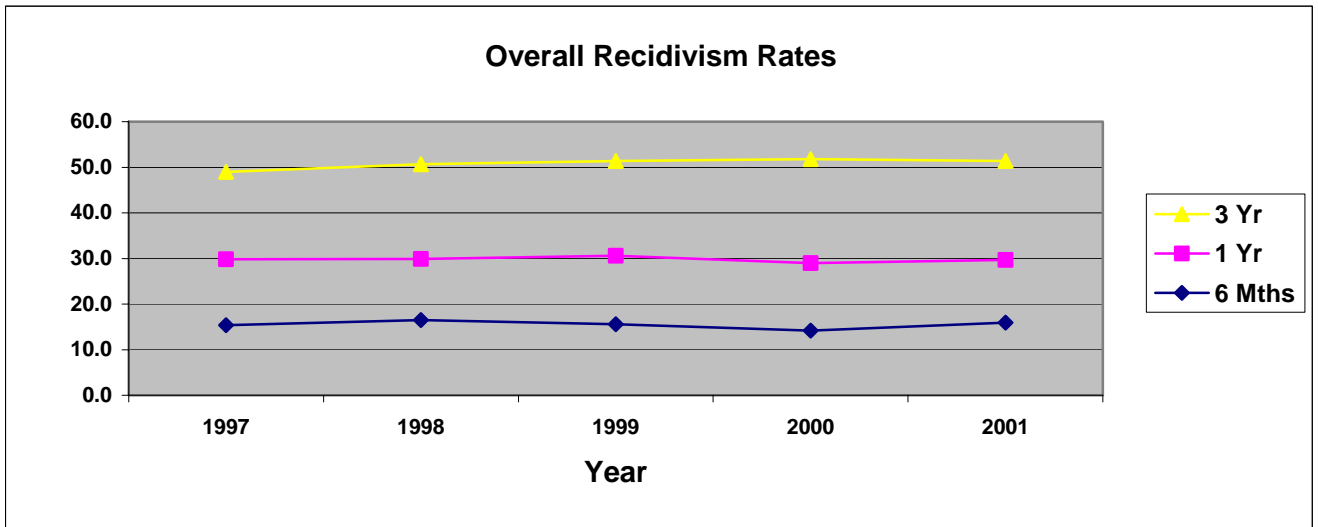
As demonstrated, table one (1) and figure one (1) show the overall ADC **2001** recidivism rates. The post-release period consists of six months, one-year, and three years, from **1997** through **2001**. In **2001**, there were a total of **5,962** inmates released from ADC (refer to table, year **2001**). Within six months of release, **15.9%** returned to prison. Within one year of release, **29.7%** returned and within three years there was an overall of **51.4%** returned to prison. **ADC is experiencing an approximate 50% return rate of inmates released from prison.**

** In all tables, the "number of releases", are the number of unduplicated releases in a given year used to generate recidivism rates. Table and Figure 1 do not specify the type of return. They demonstrate an overall return rate, regardless of reason.*

Table 1

Overall Recidivism Rates								
Release	Total Number	% Returned	# Returned	% Returned	# Returned	% Returned	Total # Returned	Total %
Year	Releases	6 Months	6 Months	1 Year	1 Year	3 Years	3 Years	Returns
1997	4668	15.4%	721	29.8%	1394	49.0%	2289	49.0%
1998	5434	16.5%	898	29.9%	1694	50.7%	2825	50.7%
1999	5330	15.6%	832	30.6%	1629	51.4%	2738	51.4%
2000	5872	14.2%	834	29.0%	1701	51.8%	3040	51.8%
2001	5962	15.9%	948	29.7%	1771	51.4%	3066	51.4%

Figure 1



Recidivism Rates: Release Type

Table two (2) demonstrates recidivism rate by type of release. ADC releases inmates by parole with supervision, which is granted by the Post Prison Transfer Board (PPTB) or by discharge (max flat of sentence). In **2001**, there were **5,778** inmates released by regular parole and **184** inmates discharged. Results indicate that within six months of release in **2001**, **947** or **16.4%** inmates released returned as a result of parole violation, while only **1** or **0.5%** of inmates discharged returned with a new sentence. Total returns for **2001** parole releases from ADC demonstrate a **52.6%** recidivism rate, while discharges show a **12.5%** return rate.

Table 2

Recidivism Rates By Type Of Release								
Year	Type of Release	Total Releases	6 Mths Returns	% Returns	1 Year Returns	% Returns	3 Years Returns	% Returns
1997	Paroled - Regular	3964	693	17.5%	1316	33.2%	2129	53.7%
	Discharge	692	28	4.0%	77	11.1%	204	29.5%
1998	Paroled - Regular	4798	870	18.1%	1557	32.5%	2596	54.1%
	Discharge	624	27	4.3%	65	10.4%	156	25.0%
1999	Paroled - Regular	4677	803	17.2%	1557	33.3%	2553	54.6%
	Discharge	643	28	4.4%	71	11.0%	184	28.6%
2000	Paroled - Regular	5691	832	14.6%	1691	29.7%	3005	52.8%
	Discharge	181	2	1.1%	10	5.5%	35	19.3%
2001	Paroled - Regular	5778	947	16.4%	1762	30.5%	3042	52.6%
	Discharge	184	1	0.5%	9	4.9%	24	12.5%
Total Paroled - Regular		24908	4145	16.6%	7883	31.6%	13325	53.5%
Total Discharged		2324	86	3.7%	232	10.0%	602	25.9%

Recidivism Rates: (Return Types) Parolees and Discharges

Table 3 and Figures (3, 3-1, 3-2, 3-3) show inmates that return to prison for parole violations with a new sentence(s), parole violators returning with a technical violation(s), and discharged (a reconvicted inmate) that returned to prison as a recommitment with a new sentence. For ADC, a return to prison for a technical violation while on parole is the foremost reason released inmate's return to prison, while a parole violation with a new sentence is secondary. **Even though a new conviction may also have a technical violation attached, the new conviction in most cases will supersede the technical violation making the new conviction the primary reason for return to prison.** In 2001, as reflected in Table 3 and Figure 3, within three years, **913 or 15.3 %** of the parolees return to prison as a result of a parole violation with new time, **1,972 or 33.1%** returned as a result of a technical violation, and **181 or 3.0%** of the discharged inmates returned as a result of a new charge.

Table 3

Recidivism Of Parolees And Discharges								
Year	Total	Type of	6 Mths	%	1 Year	%	3 Years	%
	Releases	Return	Returns	Returns	Returns	Returns	Returns	Returns
1997	4668	PV/New Sentence	179	3.8%	326	6.9%	512	10.9%
		PV/Technical	511	10.9%	976	20.9%	1453	31.1%
		Discharge - Reconviction	31	0.7%	92	2.0%	324	7.0%
1998	5434	PV/New Sentence	195	3.6%	378	7.0%	629	11.6%
		PV/Technical	674	12.4%	1167	21.5%	1854	34.1%
		Discharge - Reconviction	29	0.5%	79	1.4%	272	5.0%
1999	5323	PV/New Sentence	217	4.1%	388	7.3%	616	11.6%
		PV/Technical	581	10.9%	1156	21.7%	1848	34.7%
		Discharge - Reconviction	30	0.6%	81	1.6%	309	5.9%
2000	5872	PV/New Sentence	196	3.3%	424	7.2%	795	13.5%
		PV/Technical	633	10.8%	1254	10.6%	2078	14.0%
		Discharge - Reconviction	5	0.1%	23	0.4%	167	2.9%
2001	5962	PV/New Sentence	283	4.7%	540	9.1%	913	15.3%
		PV/Technical	663	11.1%	1211	20.3%	1972	33.1%
		Discharge - Reconviction	2	0.0%	20	0.3%	181	3.0%
Total	27259		4229	15.5%	8115	29.8%	13923	51.1%

Figure 3

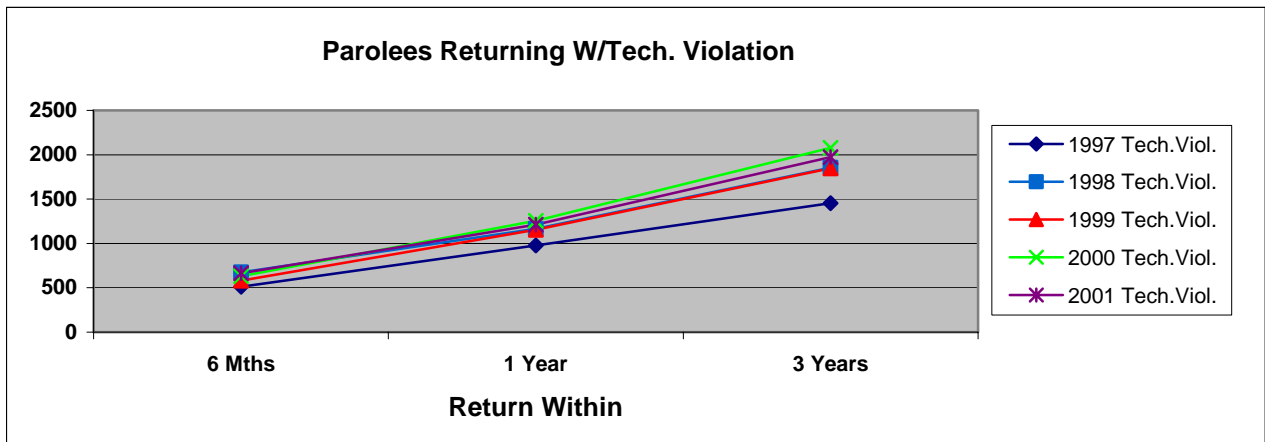


Figure 3-1

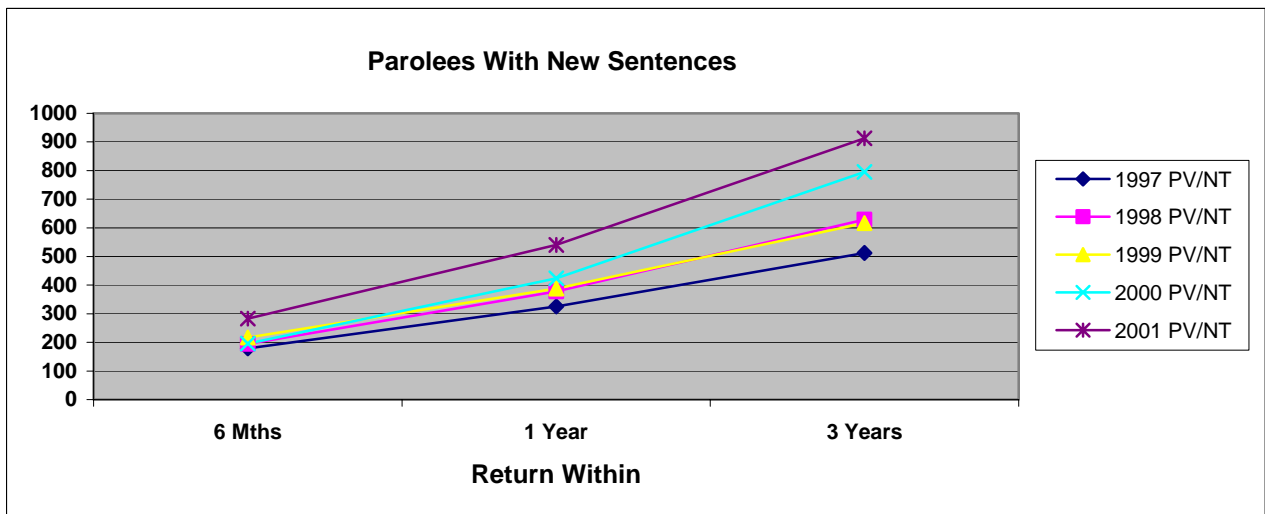


Figure 3-2

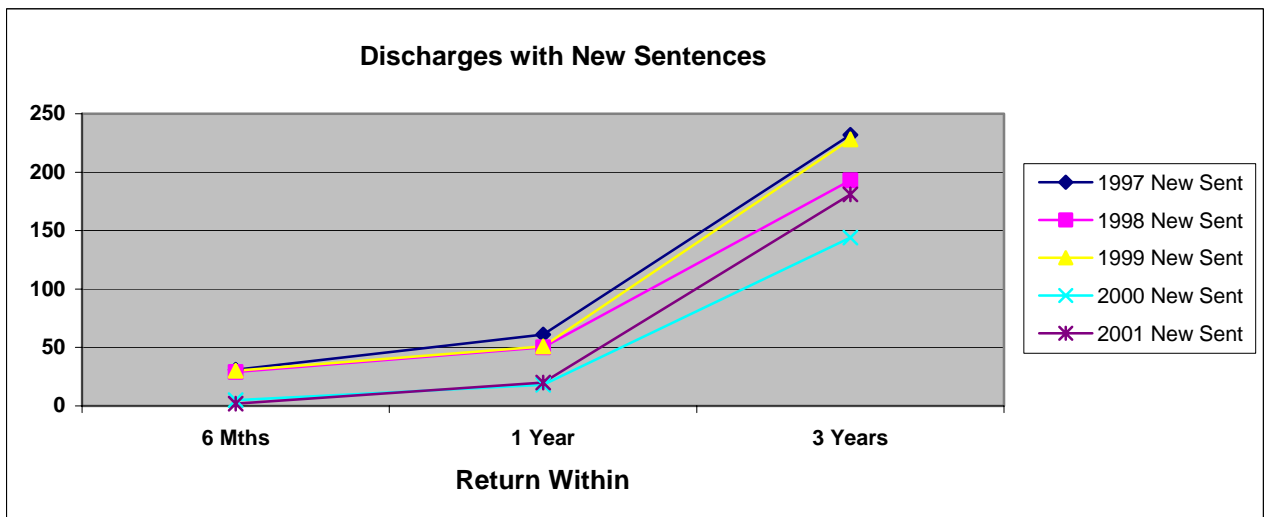
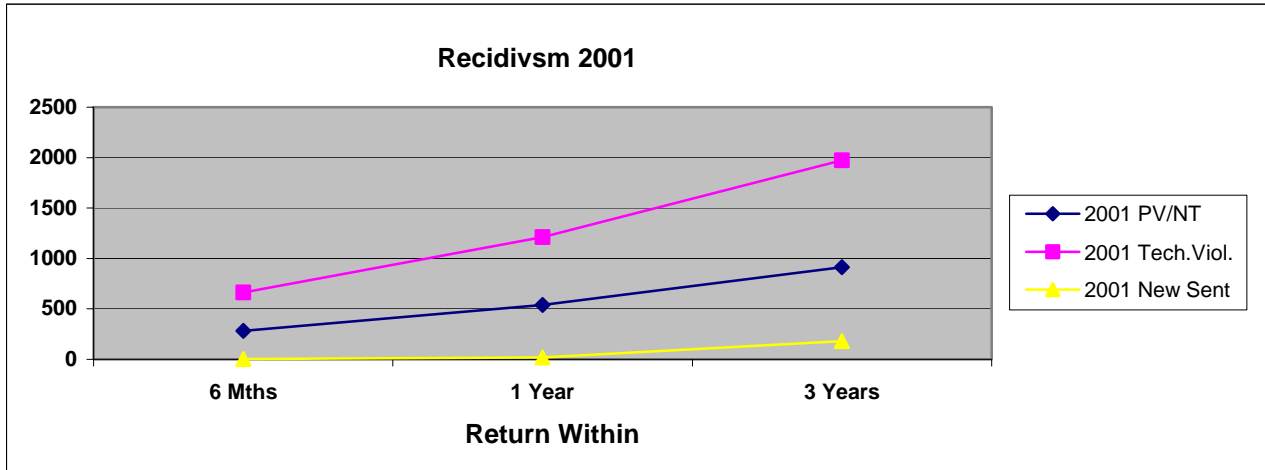


Figure 3-3



Recidivism Rates: Gender

Table 4 and Figures 4, 4-1, 4-2 exhibits recidivism rates by gender. In **2001**, both males and females increased in return rates over the three-year post release time frame. From six months to one-year, data demonstrated a fairly constant return rate for both males and females; however, by the end of the third year there was a significant increase in males returning to prison. As a result, females, (approximately a third), unlike their male counter parts, who parole and/or discharge their time do not return to prison, where nearly half of all males return.

Table 4

Recidivism Rates By Gender									
Year	Gender	Total	6 month	%	1 Year	%	3 Years	Total %	Total Inmates
		Releases	Return	Returns	Returns	Returns	Returns	Returns	Not Returning
1997	Female	439	38	8.7%	94	21.4%	162	36.9%	277
	Male	4229	683	16.2%	1300	30.7%	2127	50.3%	2102
1998	Female	512	75	14.6%	123	24.0%	227	44.3%	285
	Male	4922	823	16.7%	1501	30.5%	2528	51.4%	2394
1999	Female	545	58	10.6%	115	21.1%	206	37.8%	339
	Male	4785	774	16.2%	1514	31.6%	2532	52.9%	2253
2000	Female	652	75	11.5%	158	24.2%	264	40.5%	388
	Male	5220	759	14.5%	1543	29.6%	2766	53.0%	2454
2001	Female	625	81	13.0%	140	22.4%	260	41.6%	365
	Male	5337	867	16.2%	1631	30.6%	2806	52.6%	2531

Figure 4

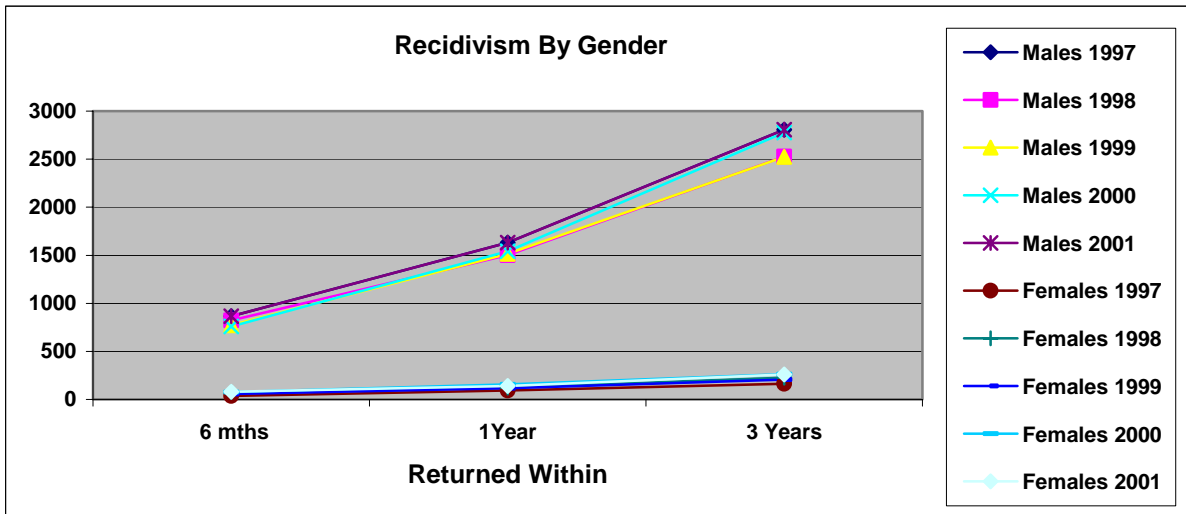


Figure 4-1

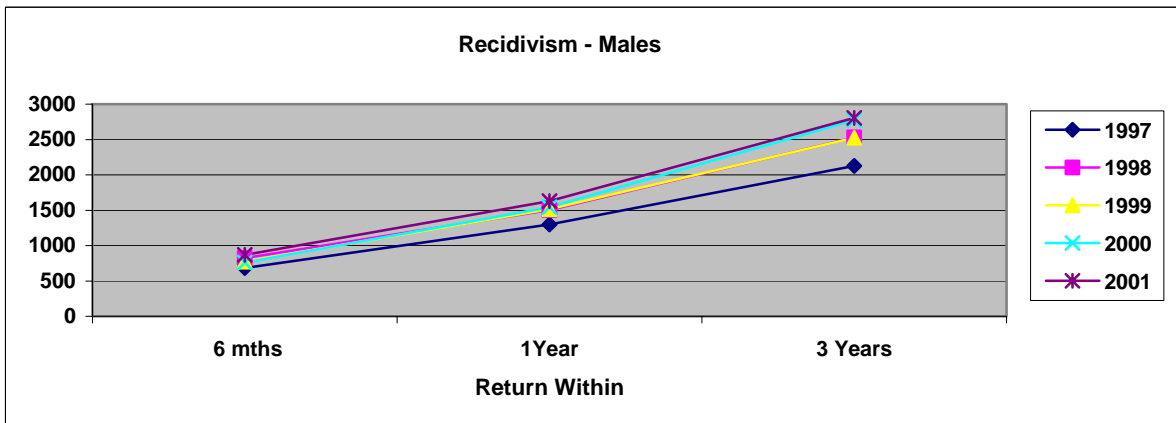
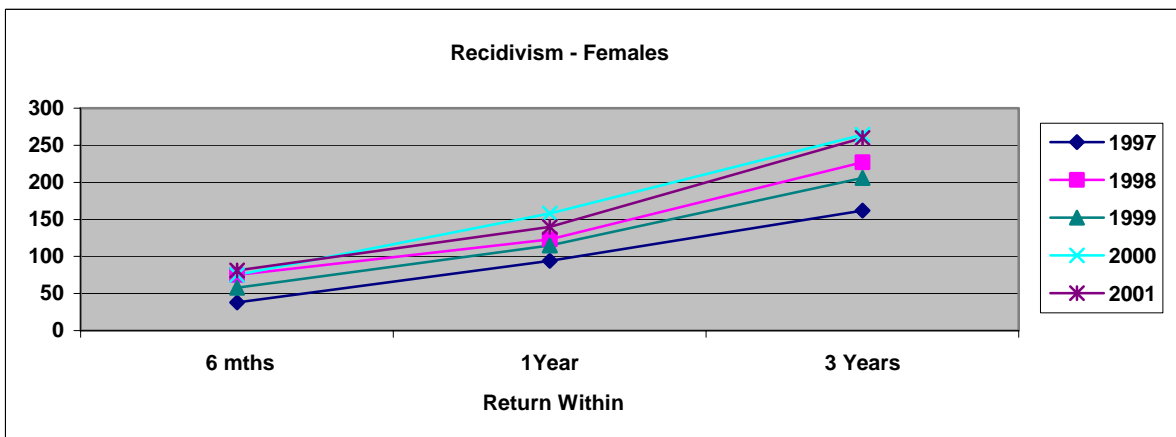


Figure 4-2



Recidivism Rates: Race

Recidivism rates were generated by race for **CY2001** and incorporated time frames of six (6) months, one-year, and three-years. Recidivism rates were based on three areas of ethnic diversity. Within the ADC, the population primarily consists of Caucasian and African-American racial designation, while only a small percentage consists of Hispanic and other. For this report, the Hispanic category consists of Cuban and Mexican racial designations, and the other category incorporates both Asian and Native American. The **2001** recidivism addendum study incorporates Caucasian, African-American, Hispanic, and other racial designations to demonstrate recidivism rates by race as provided in Table 5. In **2001**, **3,135** Caucasian inmates were released. Within six (6) months, **479 or 15.2%** returned to prison. Within one (1) year, **918 or 29.3%** returned and within three (3) years, **1,564 or 49.9%** returned to prison. For **CY 2001**, African-American inmates have a slightly higher recidivism rate (**54% vs. 50%**) than their Caucasian counterparts (see table 5).

Table 5

2001 Recidivism Rates By Race								
Year	Race	Total	6 Month	%	1 Year	%	3 Years	%
		Releases	Returns	Returns	Returns	Returns	Returns	Returns
1997	Black	2420	413	17%	795	33%	1268	52%
1997	Hispanic	29	2	7%	4	14%	7	24%
1997	Other	16	0	0%	0	0%	2	13%
1997	White	2202	306	14%	595	27%	1013	46%
1998	Black	2685	481	18%	877	33%	1463	54%
1998	Hispanic	25	5	20%	7	28%	8	32%
1998	Other	18	1	6%	4	22%	9	50%
1998	White	2706	411	15%	737	27%	1275	47%
1999	Black	2541	414	16%	801	32%	1362	54%
1999	Hispanic	19	2	11%	3	16%	5	26%
1999	Other	13	0	0%	2	15%	3	23%
1999	White	2757	416	15%	822	30%	1367	50%
2000	Black	2756	401	15%	817	30%	1512	55%
2000	Hispanic	66	6	9%	10	15%	16	24%
2000	Other	62	4	6%	5	8%	9	15%
2000	White	2988	423	14%	869	29%	1503	50%
2001	Black	2718	463	17%	839	31%	1476	54%
2001	Hispanic	64	3	5%	10	16%	18	28%
2001	Other	45	3	7%	4	9%	8	18%
2001	White	3135	479	15%	918	29%	1564	50%

Recidivism Rates: Age

Age shows to be significantly related to recidivism within the ADC. An inmate's age at his/her last admission was significantly related to return to custody (See table 6). For males, this was fairly evident when reviewing age cohorts of **25-34** as primary, and **35-44** as secondary return age ranges. Females returning to prison also demonstrated increase returns in age ranges of **25-34** and **35-44** (See Figure 6). Within each consecutive year, the overall return rate for males increased from to 1997 to 1999. From 1997 to 1998, there was a 1.1% increase in return rates, 1998 to 1999 showed a 1.6% increase, and **2000 to 2001** reflects a **1.0 %** increase in overall recidivism rates.

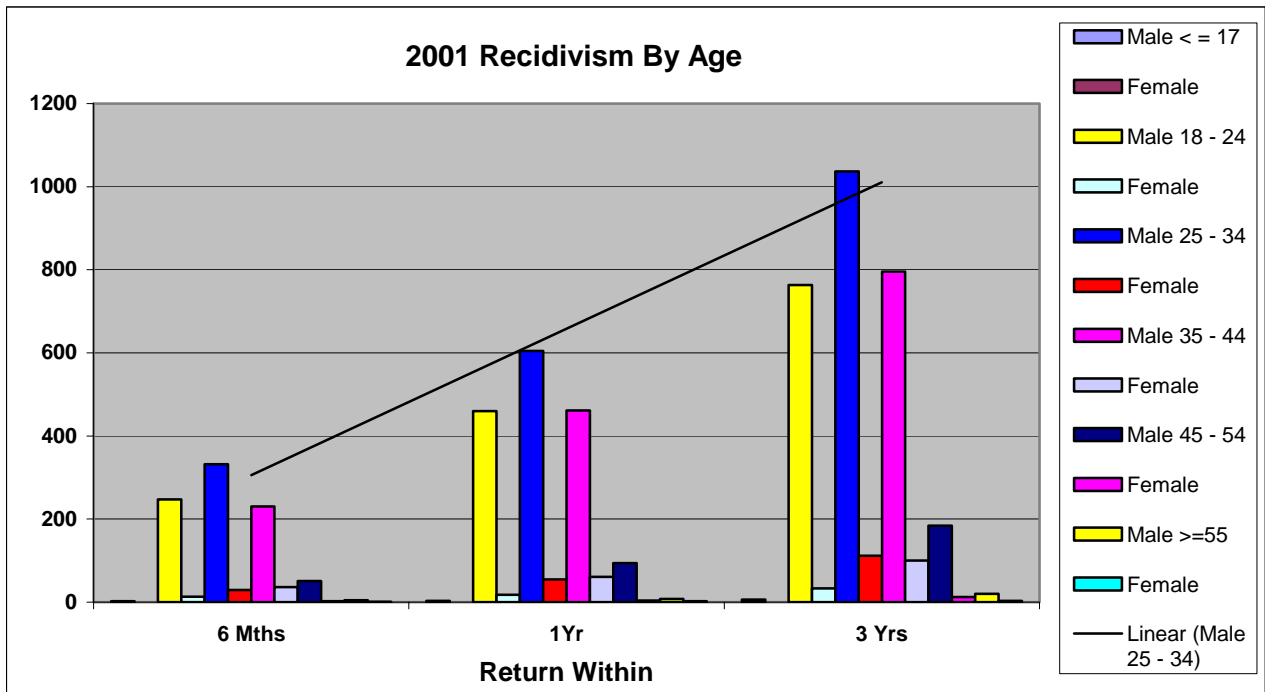
Table 6

2001 Recidivism by Age (female)					
Gender	AGE	6 Months	1 Year	3 Years	Total %
		Returns	Returns	Returns	Returns
Female	< = 17				
	18 - 24	13	18	33	12.7%
	25 - 34	29	55	112	43.1%
	35 - 44	36	61	100	38.5%
	45 -54	2	4	12	4.6%
	55 - 64	0	1	2	0.8%
	>=65	1	1	1	0.4%
	Total	81	140	260	100.0%

Table 6 Cont.

2001 Recidivism by Age (male)					
Gender	AGE	6 Months	1 Year	3 Years	Total %
		Returns	Returns	Returns	Returns
Male	<=17	2	3	6	0.2%
	18 - 24	247	460	763	27.2%
	25 - 34	332	605	1037	37.0%
	35 - 44	230	461	796	28.4%
	45 -54	51	94	184	6.6%
	55 - 64	4	7	17	0.6%
	>=65	1	1	3	0.1%
	Total	867	1631	2806	100.0%

Figure 6



Recidivism Rates: Offense

Table Seven (7) reflects the return rates as a result of the type of offense, for a select period of time. A variety of offenses were analyzed in order to understand the breadth and depth of recidivism rates by offense and the return to prison within a three-year time frame. For clarity, Table 7 denotes the offense category, the actual number of releases/returns for the year **2001**, the actual number and percent of returns within three (3) years for each category.

Table 7

2001 Recidivism Rates By Offense			
Offense Category	2001	Return	%
	Releases	w/in 3 yrs	Returns
Capital Murder	9	1	11.1%
Murder 1st Degree	48	8	16.7%
Murder 2nd Degree	72	12	16.7%
Manslaughter	37	8	21.6%
Negligent Homicide	8	3	37.5%
Kidnapping	14	1	7.1%
False Imprisonment 1st Degree	14	3	21.4%
Robbery	468	278	59.4%
Aggravated Robbery	171	82	48.0%
Battery 1st Degree	166	55	33.1%
Battery 2nd Degree	215	97	45.1%
Aggravated Assault	95	35	36.8%
Terroristic Threatening 1st Deg	26	15	57.7%
Terioristic Act	29	12	41.4%
Rape	91	17	18.7%
Carnal Abuse 1st Degree	12	3	25.0%
Carnal Abuse 2nd Degree	1	1	100.0%
Sexual Abuse 1st Degree	151	33	21.9%
Carnal Abuse 3rd Degree	11	4	36.4%
Indecent Exposure	1	1	100.0%
Violation of Minor 1st Degree	5	0	0.0%
Exposing one to HIV	2	1	50.0%
Incest	6	1	16.7%
Aggravated Assault on Wife	8	4	50.0%
Continuing Criminal Enterprise	1	1	100.0%
Non-Support	6	3	50.0%
Domestic Battering 1st Degree	4	2	50.0%
Domestic Battering 2nd Degree	14	7	50.0%
Domestic Battering 3rd Degree	33	13	39.4%
Endanger Welfare Minor 1st Degree	1	0	0.0%
Trans,Distr Mat Depicting Children	4	1	25.0%
Theft of Property	662	310	46.8%
Theft of Services	2	1	50.0%
Theft of Prop Lost, Mislaid, Del	2	0	0.0%
Theft By Receiving	174	92	52.9%
Theft of Leased Property	2	2	100.0%
Forgery	156	111	71.2%
Fraud Use of Credit Card	4	4	100.0%
Hot Check Violation	94	32	34.0%
Impair Operation Of Vital Pub Facility	3	1	33.3%

Table 7 Cont.

2001 Recidivism Rate By Offense Cont.			
Offense Category	2001	Return	%
	Releases	w/in x yrs	Returns
Reckless Burning	1	0	0.0%
Arson	28	21	75.0%
Criminal Mischief 1st Degree	19	3	15.8%
Criminal Mischief 2nd Degree	1	0	0.0%
Burglary	173	60	34.7%
Breaking and Entering	77	26	33.8%
Residential Burglary	450	385	85.6%
Commercial Burglary	174	154	88.5%
Perjury	1	0	0.0%
Intimidating A Witness	2	1	50.0%
Tampering with Physical Evidence	4	1	25.0%
Hindering Apprehension or Proc	4	6	150.0%
Escape 1st Degree	1	1	100.0%
Escape 2nd Degree	2	3	150.0%
Furnishing Prohibited Articles	9	5	55.6%
Failure to Appear	58	52	89.7%
Fleeing	30	8	26.7%
Filing a False Report	3	2	66.7%
Absconding	2	1	50.0%
Failure to Register Sex Offender	7	2	28.6%
Interfering with Law Enfor. Officer	1	0	0.0%
Advertise Drug Paraphernalia	42	35	83.3%
Manf/Del/Poss Control Substance	1235	760	61.5%
Possession w/Intent to Mfg	4	1	25.0%
Possession of Ephedrine	2	1	50.0%
Viol Omb DWI Act 4th Offense	145	28	19.3%
Stalking	6	1	16.7%
Deface Object Public Respect	1	1	100.0%
Possession Firearm Certain Person	155	54	34.8%
Possession Of Firearm - School	2	1	50.0%
Criminal Use Prohibited Weapon	1	2	200.0%
Furnish Deadly Weapon to Minor	1	1	100.0%
Possession of Drug Paraphernalia	5	1	20.0%
Fraudulent Insurance Act	1	0	0.0%
Criminal Attempt	238	99	41.6%
Criminal Solicitation	1	0	0.0%
Criminal Conspiracy	161	64	39.8%
Fail Stop Acc Injury/Death	5	0	0.0%
Discharge Firearm From Vehicle	29	9	31.0%
Engage in Viol. Criminal Group Act	1	0	0.0%
Simul. Possession of Drugs/Firearm	58	22	37.9%
TOTALS	5962	3066	51.4%