

2
0
1
0

Arkansas Recidivism Study

Tiffanye Compton, M. S., Research & Planning Administrator
Jacob Laan, M.S./Ph.D. Student/Research Analyst
Darrell McHenry, Administrative Analyst

2013

Highlights/Summary

1. Recidivism is the act of reengaging in criminal offending despite having been incarcerated. The Arkansas Department of Correction (ADC) Recidivism Study reviews all inmates released three years earlier (2010) to determine how many of them were re-incarcerated (as a Recidivist) within three years following their release. This current study shows that the ADC Overall Recidivism Rate increased from 41.6% of those released during CY2009 to 43.2% of those released during CY2010, an increase of 1.6 percentage points.
2. The return of those released in 2010 increased from 9.2% during the first six months of their release to 43.2% during three years of their release, a 34.0% overall increase (Table 1, pg. 2).
3. ADC Inmates are released either on parole or they have discharged (completed their entire sentence). The Recidivism Rate for inmates released on parole was 43.8% over three years (2010-2013) which is significantly higher than the 22.5% Recidivism Rate for inmates who discharged their sentence (Table 2, pg. 3).
4. Parole Violators with New Sentences within three-year post release account for 27.4% of the recidivists and Parole Violators with Technical Violations account for 15.3%, while Discharges with New Sentences only accounted for 0.5%.
5. 2010 Recidivism Rates for male offenders show a three-year return rate of 44.7% as compared to 31.1% for females (Table 4, pg. 6).
6. The 2010 Recidivism Rate demonstrates that 44.5% of whites and 43.3% of blacks returned to prison. The Recidivism Rates for whites and blacks increased by 2.5% points and 0.6% points respectively from the previous year (Table 5, pg. 9).
7. For 2010 releases within a three-year post release and a return to prison, both males and females within the cohort age range of 25-34 constituted the highest percentage of returns (Table 6 & 7 pgs. 9 & 10).
8. Recidivism rates are shown by offense category and crime within that category in (Table 8 on pages 11 & 12.)

Research and Planning, Arkansas Department of Correction
P. O. Box 8707, Pine Bluff, AR 71602, Telephone (870) 267-6335

Ray Hobbs, Director

Wendy Kelley, Chief Deputy Director



Arkansas' Recidivism Study (Addendum)

The **2010** Recidivism research is an addendum to the original **1997-1999** study produced in 2003 and to the addendums through **2009**, produced in prior years. This addendum was prepared by the Arkansas Department of Correction's Research and Planning Division. The addendum reviews the return rates of inmates released from custody in **CY2010**, as compared to prior years. The data for this research was obtained from the ADC electronic Offender Management Information System (eOMIS). If an individual was released **January 1, 2010 through December 31, 2010**, the data provided reflect returns for a full three-year post release. All charts and tables reflect a three-year post release review and are utilized strictly for clarity and ease to the reader.

The study is categorized into return rates of six (6) months, one (1) year, and three (3) years. As with the **2009** addendum regarding a three-year post release of inmates produced in **2012**, the ADC Research and Planning Section will continue to study, track and update trends in release/return annually.

Overall Recidivism Rates

As demonstrated, Table 1 shows the overall ADC **2010** recidivism rates. The post-release period consists of six months, one year and three years, from **2001** through **2010**. In **2010**, there was a total of **6,198** inmates released from ADC. Within six months of release, **9.2%** returned to prison. Within one year **19.5%** inmates returned and within three years **43.2%** had returned to prison. ADC's recidivism rate, averaged for the last ten years, is **44.2%**.

**In all tables, the "number of releases" is the number of unduplicated releases in a given year used to generate recidivism rates. Table 1 does not specify the type of return. It demonstrates an overall return rate, regardless of reason.*

Table 1

| Overall Recidivism Rates | | | | | | | | |
|--------------------------|--------------|-------------|------------|--------------|-------------|--------------|-------------|--------------|
| Release | Total Number | % Returned | # Returned | % Returned | # Returned | % Returned | # Returned | Total % |
| Year | Releases | 6 Months | 6 Months | 1 Year | 1 Year | 3 Years | 3 Years | Returns |
| 2001 | 5962 | 15.9% | 948 | 29.7% | 1771 | 51.4% | 3066 | 51.4% |
| 2002 | 6015 | 15.1% | 911 | 28.5% | 1716 | 49.4% | 2969 | 49.4% |
| 2003 | 6135 | 12.9% | 792 | 25.9% | 1586 | 47.4% | 2905 | 47.4% |
| 2004 | 6244 | 11.2% | 698 | 22.1% | 1377 | 44.4% | 2772 | 44.4% |
| 2005 | 5657 | 7.4% | 418 | 18.3% | 1036 | 41.4% | 2344 | 41.4% |
| 2006 | 5505 | 6.4% | 355 | 17.1% | 943 | 37.4% | 2060 | 37.4% |
| 2007 | 5783 | 6.2% | 359 | 15.2% | 881 | 40.3% | 2330 | 40.3% |
| 2008 | 6305 | 7.5% | 475 | 20.2% | 1275 | 44.9% | 2831 | 44.9% |
| 2009 | 6585 | 8.3% | 547 | 20.4% | 1343 | 41.6% | 2742 | 41.6% |
| 2010 | 6198 | 9.2% | 572 | 19.5% | 1213 | 43.2% | 2680 | 43.3% |
| Ten Year- | 6,039 | 10.7% | 608 | 21.8% | 1314 | 44.2% | 2670 | 44.2% |

Recidivism Rates: Release Type

Table 2 demonstrates recidivism rate by type of release. ADC releases inmates by parole with supervision, which is granted by the Parole Board, or by discharge (max flat of sentence). In **2010**, there were **6,047** released by regular parole and **151** inmates discharged. Results indicate that within six months of release in **2010**, **568** inmates or **9.4%** of the inmates released on parole had returned, while only **4** or **2.6%** of the inmates discharged returned with a new sentence. Total returns of parole releases from ADC in **2010** show a **43.8%** return rate, while discharges reflects a **22.5%** return rate within three-years.

Table 2

| Recidivism Rates By Type of Release-2010 | | | | | | | | |
|---|------------------------|-----------------------|-----------------------|------------------|-----------------------|------------------|------------------------|------------------|
| Year | Type of Release | Total Releases | 6 Mths Returns | % Returns | 1 Year Returns | % Returns | 3 Years Returns | % Returns |
| 2001 | Paroled - Regular | 5,778 | 947 | 16.4% | 1,762 | 30.5% | 3,042 | 52.6% |
| | Discharge | 184 | 1 | 0.5% | 9 | 4.9% | 24 | 13.0% |
| 2002 | Paroled - Regular | 5,841 | 910 | 15.6% | 1,707 | 29.2% | 2,938 | 50.3% |
| | Discharge | 174 | 1 | 0.6% | 9 | 5.2% | 31 | 17.8% |
| 2003 | Paroled - Regular | 5,958 | 788 | 13.2% | 1,577 | 26.5% | 2,861 | 48.0% |
| | Discharge | 177 | 4 | 2.3% | 9 | 5.1% | 43 | 24.3% |
| 2004 | Paroled - Regular | 6,075 | 693 | 11.4% | 1,368 | 22.5% | 2,735 | 45.0% |
| | Discharge | 169 | 5 | 3.0% | 9 | 5.3% | 37 | 21.9% |
| 2005 | Paroled - Regular | 5,505 | 413 | 7.5% | 1,025 | 18.6% | 2,317 | 42.1% |
| | Discharge | 152 | 5 | 3.3% | 11 | 7.2% | 27 | 17.8% |
| 2006 | Paroled - Regular | 5,358 | 350 | 6.5% | 931 | 17.4% | 2,020 | 37.7% |
| | Discharge | 147 | 5 | 3.4% | 12 | 8.2% | 40 | 27.2% |
| 2007 | Paroled - Regular | 5,623 | 357 | 6.3% | 872 | 15.5% | 2,293 | 40.8% |
| | Discharge | 160 | 2 | 1.3% | 9 | 5.6% | 37 | 23.1% |
| 2008 | Paroled - Regular | 6,160 | 469 | 7.6% | 1,262 | 20.5% | 2,808 | 45.6% |
| | Discharge | 145 | 6 | 4.1% | 13 | 9.0% | 23 | 15.9% |
| 2009 | Paroled - Regular | 6,421 | 543 | 8.5% | 1329 | 20.7% | 2694 | 42.0% |
| | Discharge | 164 | 4 | 2.4% | 15 | 9.1% | 34 | 20.7% |
| 2010 | Paroled- Regular | 6,047 | 568 | 9.4% | 1202 | 19.9% | 2646 | 43.8% |
| | Discharge | 151 | 4 | 2.6% | 11 | 7.3% | 34 | 22.5% |
| Total Paroled - Regular | | 58,766 | 6,038 | 10.3% | 13,035 | 22.2% | 26,354 | 44.8% |
| Total Discharged | | 1623 | 37 | 2.3% | 107 | 6.6% | 330 | 20.3% |

Table 3.

| Recidivism Of Parolees And Discharges-2010 | | | | | | | | |
|--|----------|--------------------------|---------|---------|---------|---------|---------|---------|
| Year | Total | Type of | 6 Mths | % | 1 Year | % | 3 Years | % |
| | Releases | Return | Returns | Returns | Returns | Returns | Returns | Returns |
| 2001 | 5962 | PV/New Sentence | 283 | 4.7% | 540 | 9.1% | 913 | 15.3% |
| | | PV/Technical | 663 | 11.1% | 1211 | 20.3% | 1972 | 33.1% |
| | | Discharge - Reconviction | 2 | 0.0% | 20 | 0.3% | 181 | 3.0% |
| 2002 | 6015 | PV/New Sentence | 793 | 13.2% | 1516 | 25.2% | 2549 | 42.4% |
| | | PV/Technical | 113 | 1.9% | 174 | 2.9% | 215 | 3.6% |
| | | Discharge - Reconviction | 5 | 0.1% | 26 | 0.4% | 205 | 3.4% |
| 2003 | 6135 | PV/New Sentence | 785 | 12.8% | 1558 | 25.4% | 2668 | 43.5% |
| | | Discharge - Reconviction | 7 | 0.1% | 28 | 0.5% | 237 | 3.9% |
| 2004 | 6244 | PV/New Sentence | 686 | 11.0% | 1341 | 21.5% | 2535 | 40.6% |
| | | Discharge - Reconviction | 12 | 0.2% | 36 | 0.6% | 237 | 3.8% |
| 2005 | 5657 | PV/New Sentence | 407 | 7.2% | 999 | 17.7% | 2120 | 37.5% |
| | | Discharge - Reconviction | 11 | 0.2% | 37 | 0.7% | 224 | 4.0% |
| 2006 | 5505 | PV/New Sentence | 346 | 6.3% | 918 | 16.7% | 1868 | 33.9% |
| | | Discharge - Reconviction | 9 | 0.2% | 25 | 0.5% | 192 | 3.5% |
| 2007 | 5783 | PV/New Sentence | 352 | 6.1% | 850 | 14.7% | 1708 | 29.5% |
| | | PV/Technical | 1 | 0.0% | 10 | 0.2% | 454 | 7.9% |
| | | Discharge - Reconviction | 6 | 0.1% | 21 | 0.4% | 168 | 2.9% |
| 2008 | 6305 | PV/New Sentence | 345 | 5.5% | 818 | 13.0% | 1732 | 27.5% |
| | | PV/Technical | 122 | 1.9% | 427 | 6.8% | 925 | 14.7% |
| | | Discharge - Reconviction | 8 | 0.1% | 30 | 0.5% | 174 | 2.8% |
| 2009 | 6585 | PV/New Sentence | 403 | 6.1% | 911 | 13.8% | 1665 | 25.3% |
| | | PV/Technical | 138 | 2.1% | 404 | 6.1% | 916 | 13.9% |
| | | Discharge - Reconviction | 6 | 0.1% | 28 | 0.4% | 161 | 2.4% |
| 2010 | 6198 | PV/New Sentence | 445 | 7.2% | 835 | 13.5% | 1700 | 27.4% |
| | | PV/Technical | 123 | 2.0% | 367 | 5.9% | 946 | 15.3% |
| | | Discharge-Reconviction | 4 | 0.1% | 11 | 0.2% | 34 | 0.5% |

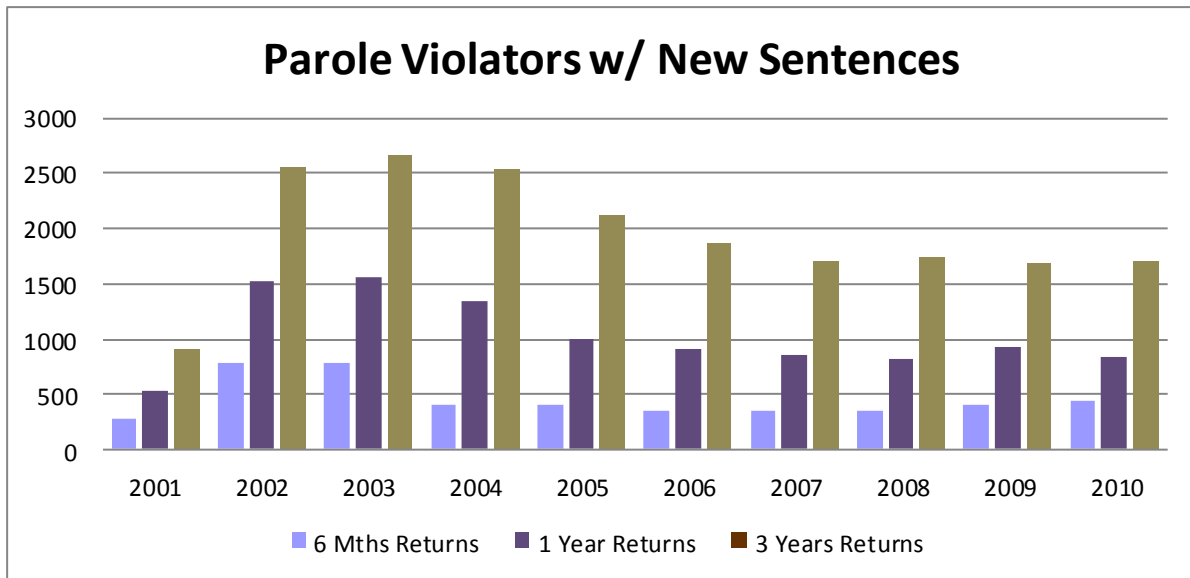
Recidivism Rates: (Return Types) Parolees and Discharges

Table 3 and Figures 3, 3-1 and 3-2 show inmates that return to prison for parole violations with a new sentence (s); or parole violators returning with a technical violation (s); and discharges (reconvicted inmates) that returned to prison as a new commitment with a new sentence. Although the number of technical violators returned to ADC has decreased since the opening in 2003 of the Omega Technical Parole Violators Center, the number returned in **2010** has increased from its lowest number in **2007**. Even though a new conviction might also have a technical violation attached, the new conviction on most cases will supersede the technical violation, making the new conviction the primary reason for returning to prison.

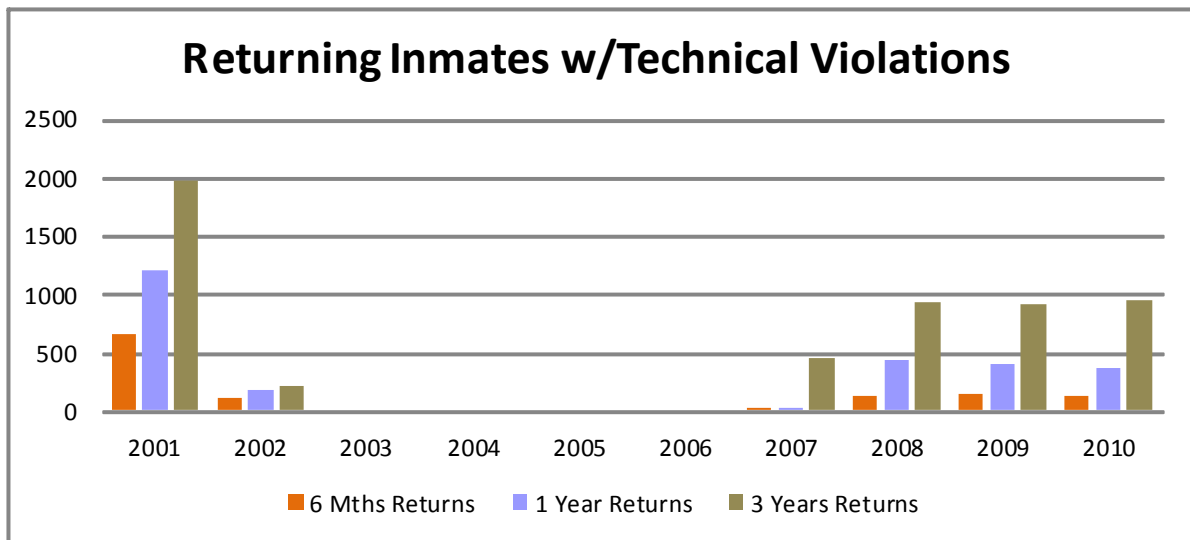
*Previously, Discharge-Reconviction was not specific to only include Discharge Inmates. CY2010 Releases only includes those Inmates who were specifically Discharged.



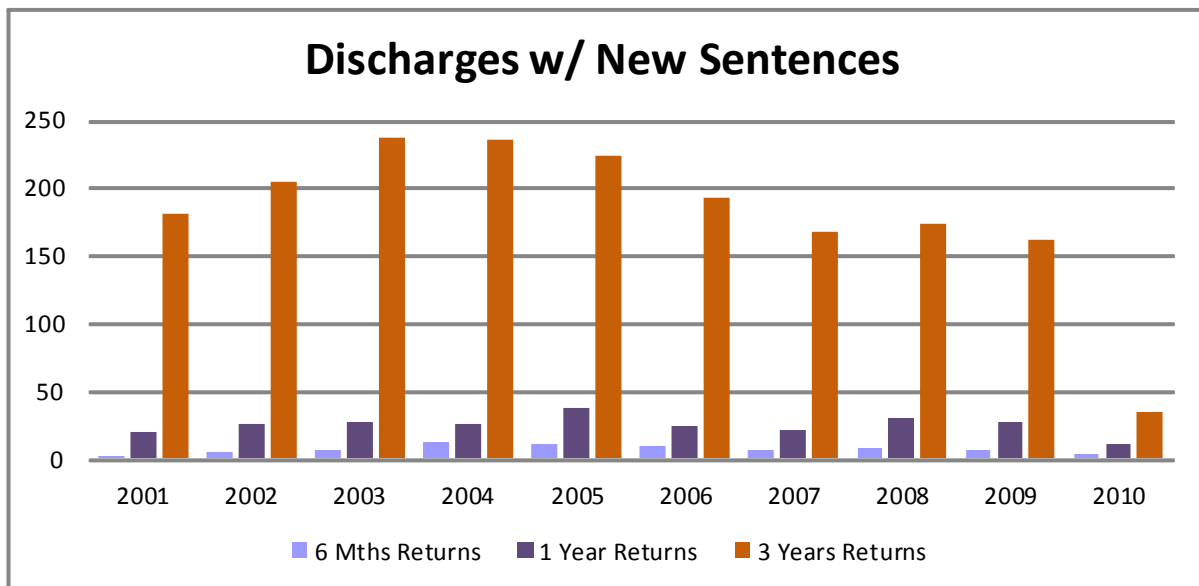
3. Fig. 1



3. Fig. 2



3. Fig. 3



Recidivism Rates: Gender

Table 4 , 4-1, 4-2 exhibits recidivism rates by gender. Across the years, male Inmates have a higher recidivism rate when compared to female Inmates. In **2010**, 44.7% of male Inmates released returned to the ADC versus 31.1% of the female Inmates released. From six months to one year, data demonstrated a constant return rate for both males and females; however, by the end of the third year there was a larger percentage of males returning to prison compared to females.

Table 4

| Recidivism Rates By Gender | | | | | | | | | |
|----------------------------|--------|----------|---------|---------|---------|---------|---------|---------|---------------|
| Year | Gender | Total | 6 month | Total % | 1 Year | Total % | 3 Years | Total % | Total Inmates |
| | | Releases | Return | Returns | Returns | Returns | Returns | Returns | Not Returning |
| 2001 | Female | 625 | 81 | 13.0% | 140 | 22.4% | 260 | 41.6% | 365 |
| | Male | 5,337 | 867 | 16.2% | 1,631 | 30.6% | 2,806 | 52.6% | 2,531 |
| 2002 | Female | 594 | 67 | 11.2% | 134 | 22.6% | 242 | 40.7% | 320 |
| | Male | 5,421 | 844 | 15.6% | 1,582 | 29.2% | 2,727 | 50.3% | 2,426 |
| 2003 | Female | 616 | 54 | 8.8% | 111 | 18.0% | 215 | 34.9% | 401 |
| | Male | 5,519 | 738 | 13.4% | 1,475 | 26.7% | 2,690 | 48.7% | 2,829 |
| 2004 | Female | 551 | 31 | 5.6% | 56 | 10.2% | 139 | 25.2% | 413 |
| | Male | 5,693 | 667 | 11.8% | 1,321 | 23.2% | 2,633 | 46.2% | 3,060 |
| 2005 | Female | 534 | 15 | 2.8% | 44 | 8.2% | 123 | 23.0% | 411 |
| | Male | 5,124 | 403 | 7.9% | 992 | 19.4% | 2,221 | 43.3% | 2,903 |
| 2006 | Female | 614 | 18 | 2.9% | 57 | 9.3% | 137 | 22.3% | 477 |
| | Male | 4,891 | 337 | 6.9% | 886 | 18.1% | 1,923 | 39.3% | 2,968 |
| 2007 | Female | 675 | 21 | 3.1% | 53 | 7.9% | 158 | 23.4% | 517 |
| | Male | 5,783 | 338 | 5.8% | 828 | 14.3% | 2,172 | 37.6% | 3,611 |
| 2008 | Female | 735 | 27 | 3.7% | 87 | 11.8% | 211 | 28.7% | 524 |
| | Male | 5,570 | 448 | 5.0% | 1,188 | 21.3% | 2,620 | 47.0% | 2,950 |
| 2009 | Female | 755 | 41 | 5.4% | 99 | 13.1% | 210 | 27.8% | 545 |
| | Male | 5,830 | 506 | 8.7% | 1245 | 21.4% | 2533 | 43.4% | 3297 |
| 2010 | Female | 687 | 32 | 4.7% | 74 | 10.8% | 214 | 31.1 | 473 |
| | Male | 5,511 | 540 | 9.8% | 1139 | 20.7% | 2,466 | 44.7 | 3,045 |

Figure 4

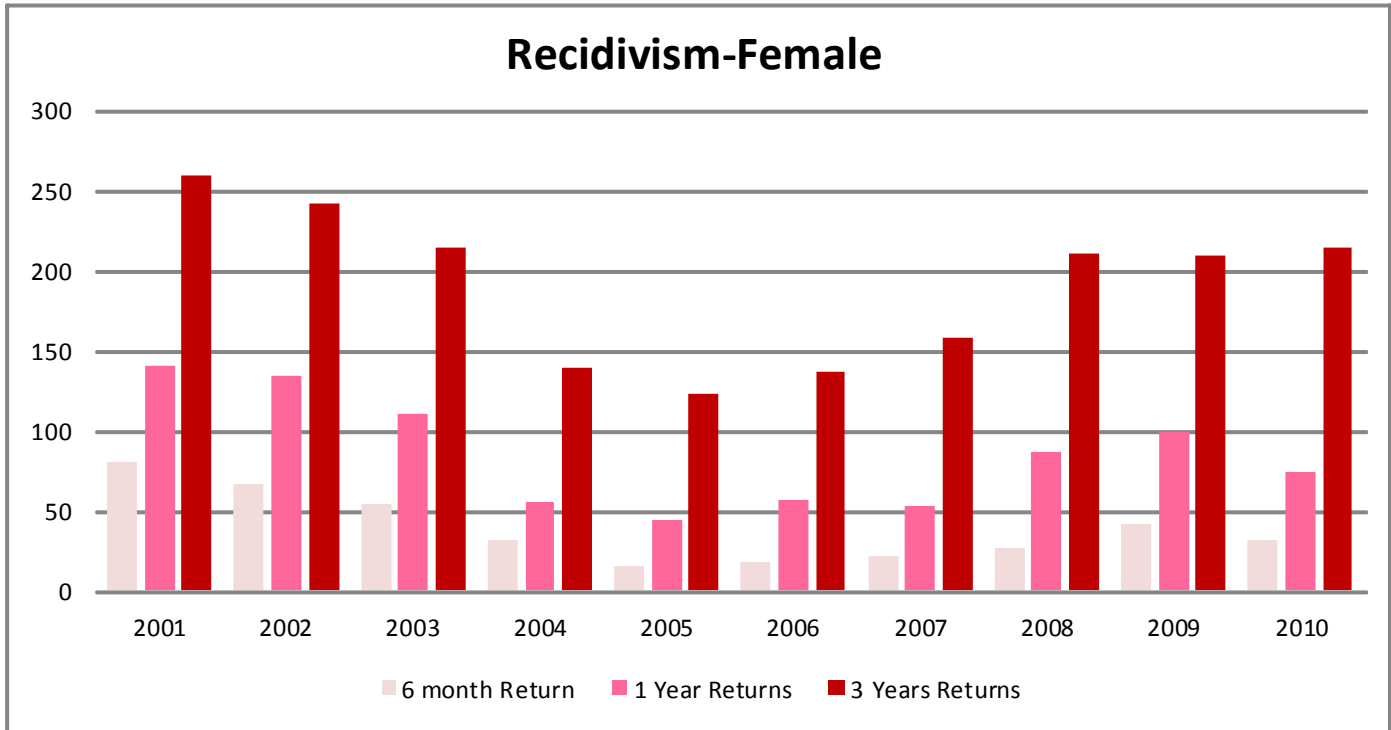


Figure 4.1

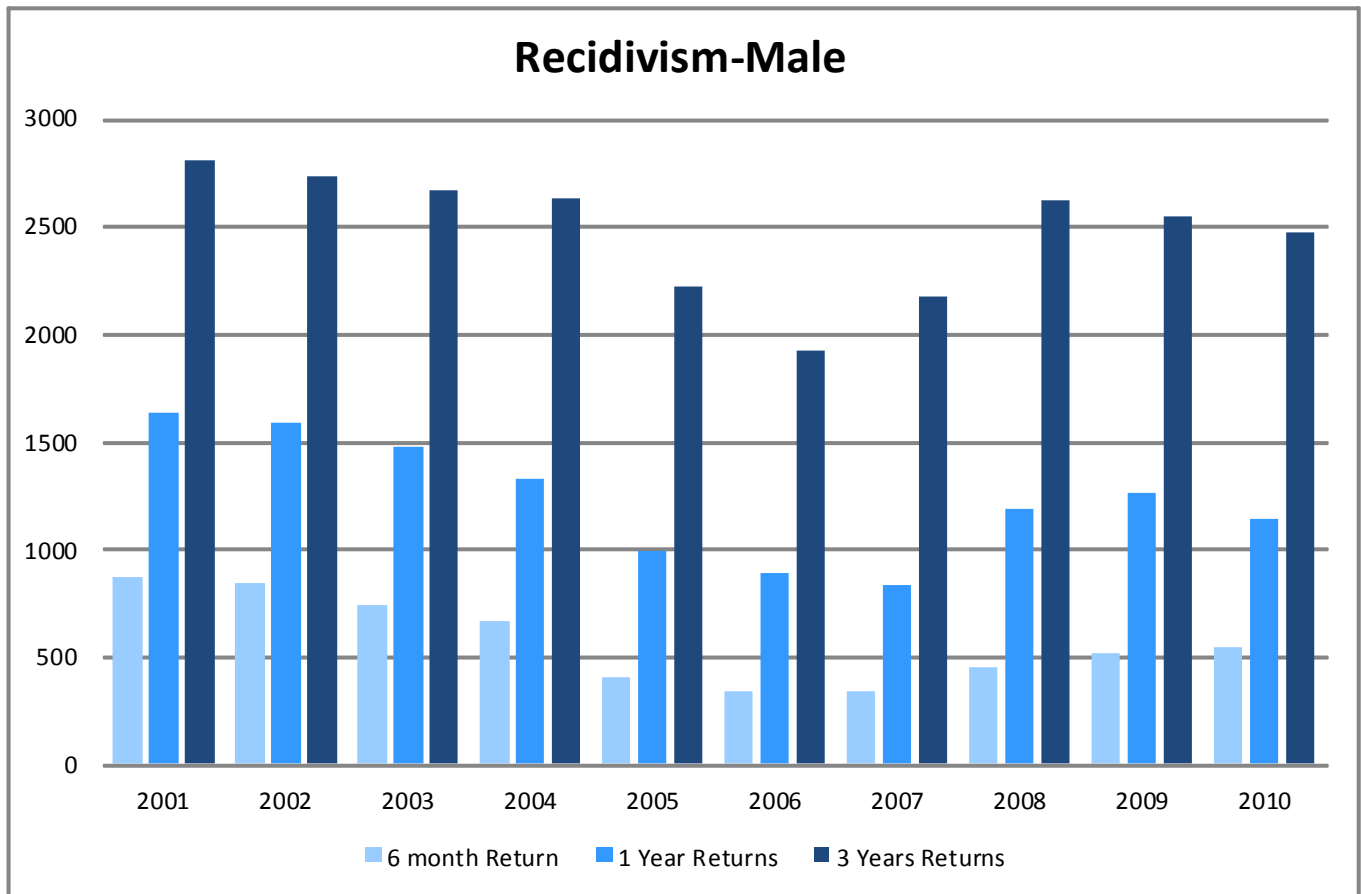


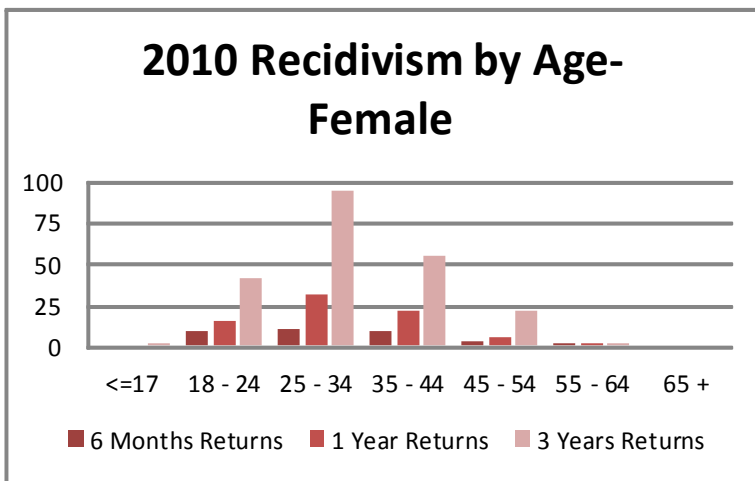
Table 5

| 2010 Recidivism Rates By Race | | | | | | | | |
|-------------------------------|----------|----------------|-----------------|-----------|----------------|-----------|----------------|-----------|
| Year | Race | Total Releases | 6 Month Returns | % Returns | 1 Year Returns | % Returns | 3 Year Returns | % Returns |
| 2001 | Black | 2,718 | 463 | 17.0% | 839 | 30.9% | 1,476 | 54.3% |
| | Hispanic | 64 | 3 | 4.7% | 10 | 15.6% | 18 | 28.1% |
| | Other | 45 | 3 | 6.7% | 4 | 8.9% | 8 | 17.8% |
| | White | 3,135 | 479 | 15.3% | 918 | 29.3% | 1,564 | 49.9% |
| 2002 | Black | 2,618 | 408 | 15.6% | 741 | 28.3% | 1,335 | 51.0% |
| | Hispanic | 75 | 5 | 6.7% | 9 | 12.0% | 13 | 17.3% |
| | Other | 30 | 0 | 0.0% | 3 | 10.0% | 7 | 23.3% |
| | White | 3,292 | 497 | 15.1% | 962 | 29.2% | 1,613 | 49.0% |
| 2003 | Black | 2,768 | 321 | 11.6% | 691 | 25.0% | 1,349 | 48.7% |
| | Hispanic | 50 | 4 | 8.0% | 11 | 22.0% | 20 | 40.0% |
| | Other | 13 | 0 | 0.0% | 1 | 7.7% | 5 | 38.5% |
| | White | 3,304 | 467 | 14.1% | 883 | 26.7% | 1,531 | 46.3% |
| 2004 | Black | 2,711 | 255 | 9.4% | 573 | 21.1% | 1,260 | 46.5% |
| | Hispanic | 64 | 10 | 15.6% | 14 | 21.9% | 24 | 37.5% |
| | Other | 19 | 1 | 5.3% | 4 | 21.1% | 5 | 26.3% |
| | White | 3,450 | 432 | 12.5% | 786 | 22.8% | 1,483 | 43.0% |
| 2005 | Black | 2,285 | 167 | 7.3% | 455 | 19.9% | 1,064 | 46.6% |
| | Hispanic | 70 | 6 | 8.6% | 11 | 15.7% | 22 | 31.4% |
| | Other | 30 | 4 | 13.3% | 7 | 23.3% | 10 | 33.3% |
| | White | 3,273 | 241 | 7.4% | 563 | 17.2% | 1,248 | 38.1% |
| 2006 | Black | 2,304 | 144 | 6.3% | 396 | 17.2% | 925 | 40.1% |
| | Hispanic | 115 | 10 | 8.7% | 12 | 10.4% | 29 | 25.2% |
| | Other | 22 | 1 | 4.5% | 2 | 9.1% | 4 | 18.2% |
| | White | 3,064 | 200 | 6.5% | 533 | 17.4% | 1,102 | 36.0% |
| 2007 | Black | 2,374 | 159 | 6.7% | 403 | 17.0% | 1,057 | 44.5% |
| | Hispanic | 155 | 12 | 7.7% | 18 | 11.6% | 34 | 21.9% |
| | Other | 38 | 3 | 7.9% | 7 | 18.4% | 16 | 42.1% |
| | White | 3,216 | 185 | 5.8% | 453 | 14.1% | 1,223 | 38.0% |
| 2008 | Black | 2,607 | 200 | 7.7% | 535 | 20.5% | 1,235 | 47.4% |
| | Hispanic | 247 | 11 | 4.5% | 26 | 10.5% | 53 | 21.5% |
| | Other | 32 | 5 | 15.6% | 12 | 37.5% | 19 | 59.4% |
| | White | 3,419 | 259 | 7.6% | 702 | 20.5% | 1,524 | 44.6% |
| 2009 | Black | 2,641 | 207 | 7.8% | 509 | 19.3% | 1128 | 42.7% |
| | Hispanic | 213 | 15 | 7.0% | 27 | 12.7% | 41 | 19.2% |
| | Other | 37 | 5 | 13.5% | 12 | 32.4% | 20 | 54.1% |
| | White | 3694 | 319 | 8.6% | 795 | 21.5% | 1553 | 42.0% |
| 2010 | Black | 2,540 | 205 | 8.1% | 464 | 18.3% | 1101 | 43.3% |
| | Hispanic | 210 | 17 | 8.1% | 29 | 13.8% | 46 | 21.9% |
| | Other | 46 | 5 | 10.7% | 10 | 21.7% | 20 | 43.5% |
| | White | 3,402 | 345 | 10.1% | 711 | 20.9% | 1513 | 44.5% |

Recidivism Rates: Race

In Table 5 Recidivism Rates were generated by race for **2010** and encompasses time frames of six months, one year and three-year post release. Recidivism rates were based on six racial groups. Within the ADC, the population primarily consists of Caucasian and African-American racial cohorts, while only a small percentage consists of Hispanic and other categories. For this report, the category of Caucasian is denoted as White; the African-American category is denoted as Black; the Hispanic Category consists of Cuban, Mexican and Hispanic racial designations; and the Other category incorporates both Asian and Native Americans. The **2010** Recidivism Study addendum incorporates Caucasian, African-American, Hispanic, and Other racial designations to demonstrate recidivism rates by race as provided in Table 5. In **2010, 3,402** Caucasian inmates were released and within three years **1,513** or **44.5%** returned to prison, while **2,540** African-American inmates were released with **1,101** or **43.3%** returning to prison within three years. For **2010**, the Recidivism Rate for Caucasian inmates is marginally higher than for African-Americans (see Table 5).

Table 6



Recidivism Rate: Age

Age shows to be related to recidivism within the ADC. There was considerable variation between age groups among recidivists (see Tables 6, 6.1 & 7). For both males and females, the age cohort of 25-34 was the highest frequency age group among recidivists (See Table 7).



Table 6.1

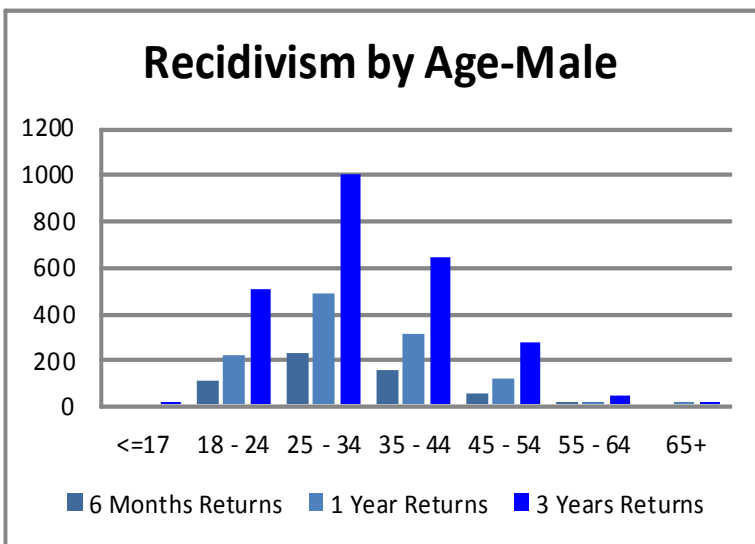


Table 7

| Recidivism by Age (Female) | | | | | | | |
|----------------------------|--------------|----------------|-----------|-----------|------------|-------------|----------------|
| Gender | AGE | Total Releases | 6 Months | 1 Year | 3 Years | % of Total | % of Age Group |
| | | | Returns | Returns | Returns | Returns | Returned |
| Female | <=17 | 1 | 0 | 0 | 1 | 0.47% | 100.0% |
| | 18 - 24 | 90 | 9 | 15 | 41 | 19.16% | 45.6% |
| | 25 - 34 | 263 | 10 | 31 | 94 | 43.93% | 35.7% |
| | 35 - 44 | 200 | 9 | 21 | 55 | 25.7% | 27.5% |
| | 45 - 54 | 116 | 3 | 5 | 21 | 9.81% | 18.1% |
| | 55 - 64 | 16 | 1 | 2 | 2 | .93% | 12.5% |
| | 65+ | 1 | 0 | 0 | 0 | 0.0% | 0.0% |
| | Total | 687 | 32 | 74 | 214 | 100% | |

| Recidivism by Age (Male) | | | | | | | |
|--------------------------|--------------|----------------|------------------|----------------|-----------------|-----------------|-------------------------|
| Gender | AGE | Total Releases | 6 Months Returns | 1 Year Returns | 3 Years Returns | Total % Returns | % of Age Group Returned |
| Male | <=17 | 2 | 0 | 0 | 2 | 0.8% | 100.00% |
| | 18 - 24 | 888 | 110 | 215 | 500 | 20.28% | 56.3% |
| | 25 - 34 | 2143 | 223 | 485 | 1000 | 40.55% | 46.7% |
| | 35 - 44 | 1451 | 151 | 308 | 644 | 26.12% | 44.4% |
| | 45 - 54 | 795 | 46 | 113 | 275 | 11.15% | 34.6% |
| | 55 - 64 | 208 | 10 | 17 | 39 | 1.58% | 18.8% |
| | 65+ | 24 | 0 | 1 | 6 | .24% | 25.0% |
| | Total | 5511 | 540 | 1139 | 2466 | 100% | |

Recidivism Rates: Offense

Table 8 reflects the return rates as a result of the type of offense for a selected period of time. A variety of offenses were analyzed in order to understand the breadth and depth of recidivism rates by offense and the return to prison within the three-year time frame. For clarity, Table 8 denotes the offense category, the actual number of releases/returns for 2010, and the actual numbers and percentages of returns within three years for each category.

**Table 8
Recidivism Rates By Offense Category-2010**

| Offense Category | No.Releases | Ret w/in 3 yrs | % Returned |
|---|--------------------|-----------------------|-------------------|
| 0101 - Capital Murder | 3 | 0 | 0.0% |
| 0102 - Murder-1st Degree | 39 | 16 | 41.0% |
| 0103 - Murder-2nd Degree | 48 | 15 | 31.3% |
| 0104 - Manslaughter | 35 | 11 | 31.4% |
| 0105 - Negligent Homicide | 17 | 3 | 17.6% |
| 0201 - Kidnapping | 38 | 20 | 52.6% |
| 0202 - False Imprisonment-1st Degree | 35 | 15 | 42.9% |
| 0301 - Robbery | 443 | 251 | 56.7% |
| 0302 - Aggravated Robbery | 125 | 52 | 41.6% |
| 0401 - Battery-1st Degree | 140 | 51 | 36.4% |
| 0402 - Battery-2nd Degree | 385 | 195 | 50.6% |
| 0403 - Aggravated Assault | 213 | 109 | 51.2% |
| 0404 - Terroristic Threatening | 161 | 80 | 49.7% |
| 0405 - Terroristic Act | 17 | 5 | 29.4% |
| 0406 - Agg. Assault On Corr. Employee | 4 | 3 | 75.0% |
| 0407 - Battery 3rd Deg. (Enhanced) | 2 | 1 | 50.0% |
| 0408 - Intro. Cont. Subs. Body/Another | 2 | 1 | 50.0% |
| 0416 - Offense Com. Presence of Child | 2 | 1 | 50.0% |
| 0424 - Falsely Making Terror Threat | 1 | 0 | 0.0% |
| 0501 - Rape | 57 | 23 | 40.4% |
| 0502 - Carnal Abuse-1st Degree | 2 | 0 | 0.0% |
| 0504 - Sexual Abuse-1st Degree | 32 | 21 | 65.6% |
| 0505 - Violation Of A Minor-1st Dg | 1 | 0 | 0.0% |
| 0510 - Carnal Abuse-3rd Degree | 3 | 2 | 66.7% |
| 0512 - Indecent Exposure | 1 | 1 | 100.0% |
| 0513 - Sexual Assault | 152 | 53 | 34.9% |
| 0518 - Reg. Sex offend near cert. facl | 3 | 1 | 33.3% |
| 0634 - Violation of Protect Order | 1 | 0 | 0.0% |
| 0658 - Residential Burglary | 571 | 342 | 59.9% |
| 0659 - Commercial Burglary | 259 | 139 | 53.7% |
| 0701 - Incest | 5 | 1 | 20.0% |
| 0702 - Domestic Battering-1st Degree | 14 | 6 | 42.9% |
| 0703 - Domestic Battering-2nd Degree | 45 | 15 | 33.3% |
| 0704 - Agg. Aslt On Family/Household | 18 | 7 | 38.9% |
| 0705 - Non-Support | 43 | 11 | 25.6% |
| 0707 - Interference With Custody | 1 | 0 | 0.0% |
| 0708 - Domestic Battering-3rd Degree | 79 | 38 | 48.1% |
| 0801 - Endanger Welfare Minor-1st Dg | 14 | 5 | 35.7% |
| 0803 - Permit Child Abuse | 1 | 0 | 0.0% |
| 0804- Engage Child in Sex Expct. Condt. | 1 | 0 | 0.0% |
| 0805 - Trans, Distr.Mat. Deplctg Chil | 3 | 1 | 33.3% |
| 0809 - Solicit Money/Prop From Incomp. | 1 | 0 | 0.0% |
| 0810 - Sexual Solicitation Of A Child | 3 | 2 | 66.7% |
| 0813 - Dist/Poss/View Sex Explicit | 8 | 2 | 25.0% |
| 0814 - Computer Child Pornography | 12 | 4 | 33.3% |
| 0828 - Expose Child to Chem Substance | 2 | 1 | 50.0% |
| 0830 - Sexual Indecency With A Child | 14 | 7 | 50.0% |
| 0901 - Abuse Of Adults | 2 | 0 | 0.0% |
| 1001 - Theft Of Property | 655 | 308 | 47.2% |
| 1004 - Theft By Receiving | 223 | 106 | 47.5% |
| 1005 - Theft Of Leased Property | 2 | 1 | 50.0% |
| 1006 - Theft Of Public Benefits | 5 | 2 | 40.0% |
| 1046 - Internet Stalk.- Child Fel. C | 5 | 3 | 60.0% |
| 1048 - Internet Stalk.- Child Fel. B | 13 | 4 | 30.8% |
| 1066 - Theft of Scrap Metal | 3 | 1 | 33.3% |

**Table 8—Continued
Recidivism Rates By Offense Category-2010**

| Offense Category | No. Releases | Ret w/in 3 yrs | % Returned |
|--|--------------|----------------|--------------|
| 1075 - Reg. Sex Off. Pro. Entering School Campus | 1 | 0 | 0.0% |
| 1101 - Forgery | 217 | 104 | 47.9% |
| 1102 - Defrauding Secured Creditors | 1 | 0 | 0.0% |
| 1104 - Fraudulent Use Of Credit Card | 26 | 10 | 38.5% |
| 1113 - Hot Check Violation | 87 | 27 | 31.0% |
| 1118 - Financial Identity Fraud | 3 | 1 | 33.3% |
| 1202 - Impair Oper. Of Vital Pub.Facil | 2 | 1 | 50.0% |
| 1203 - Arson | 18 | 7 | 38.9% |
| 1204 - Reckless Burning | 1 | 0 | 0.0% |
| 1205 - Criminal Mischief-1st Degree | 27 | 10 | 37.0% |
| 1207 - Criminal Mischief 2nd Degree | 2 | 1 | 50.0% |
| 1301 - Burglary | 5 | 2 | 40.0% |
| 1302 - Breaking And Entering | 76 | 34 | 44.7% |
| 1601 - Perjury | 1 | 0 | 0.0% |
| 1604 - Tampering With Physical Evid. | 16 | 7 | 43.8% |
| 1612 - Retaliation Against Informant | 3 | 1 | 33.3% |
| 1701 - Interfering with Law Enf. Off. | 1 | 1 | 100.0% |
| 1702- Hindering Apprehension or Proc | 10 | 2 | 20.0% |
| 1706 - Escape-2nd Degree | 4 | 2 | 50.0% |
| 1711 - Furnishing Prohib. Articles | 16 | 13 | 81.3% |
| 1712 - Failure To Appear | 86 | 41 | 47.7% |
| 1713 - Fleeing | 39 | 17 | 43.6% |
| 1715 - Filing A False Report | 7 | 2 | 28.6% |
| 1720 - Fail To Register Child/Sex Off | 66 | 23 | 34.8% |
| 1901- Traffic In Illegal Food Coupon | 1 | 0 | 0.0% |
| 2001 - Abuse of a Corpse | 2 | 1 | 50.0% |
| 2201- Fail. To Keep Records Dist. Drg | 86 | 16 | 18.6% |
| 2202 - Advertise Drug Paraphernalia | 445 | 140 | 31.5% |
| 2203 - Manu/Delv/Poss Control Subs. | 800 | 228 | 28.6% |
| 2205 - Use Of Communication Facility | 1 | 1 | 100.0% |
| 2214 - Poss W/I To Manufacture | 4 | 2 | 50.0% |
| 2215 - Possession Of Ephedrine | 3 | 1 | 33.3% |
| 2300 - DWI Offenses | 3 | 2 | 66.7% |
| 2301 - Viol Of Omb DWI Act 4th Offense | 49 | 6 | 12.2% |
| 2707 - Stalking | 1 | 0 | 0.0% |
| 2901 - Poss. Firearm Certain Person | 37 | 12 | 32.4% |
| 2902 - Criminal Use Prohibited Weapon | 1 | 0 | 0.0% |
| 2904 - Criminal Poss. Of Explosives | 1 | 0 | 0.0% |
| 2907 - Poss. Of Firearm - School | 1 | 0 | 0.0% |
| 2912- Possession of Defaced Firearm | 1 | 0 | 0.0% |
| 3001 - Criminal Attempt | 40 | 13 | 32.6% |
| 3003 - Criminal Conspiracy | 27 | 9 | 33.3% |
| 3513 - Unlawful Use/aAccess W/Computer | 1 | 0 | 0.0% |
| 6503 - Fail To Stop Acc. W/Inj/Death | 5 | 1 | 20.0% |
| 8001 - Discharge Firearm From Vehicle | 3 | 1 | 33.3% |
| 8002- Engage In Viol. Crim. Group Act | 2 | 2 | 100.0% |
| 8004- Simul. Poss of Drugs/Firearm | 6 | 2 | 33.3% |
| Total | 6198 | 2680 | 43.2% |