



Arkansas Recidivism Study

George Brewer, Research and Planning Administrator
Brenda K. Wilson, Management Project Analyst

2009

1. Overall Recidivism rate has decreased from 41.4% in 2005 to 37.4% in 2006, a 4.0% variance (Table 1, pg. 2).
2. At a three-year post release, 2006 recidivism rates increased from (6.4%) the first six months to (37.4%) in three years, a 31% overall increase (Table 1, pg. 2).
3. Recidivism rates, over three years, for paroled inmates (37.7%) were moderately higher than that of discharged inmates (27.2%), in 2006 (Table 2, pg. 3).
4. For 2006 paroles and discharges, return rates increased significantly throughout the three-year post return (Table 2, pg. 3).
5. Parole Violators with New Sentences, within a three year post release, accounted for 91% of the recidivists (Table 3, pg. 4).
6. 2006 recidivism rates, for male offenders, show a three year post return rate of 39.3% as compared to a return rate of 22.3% for females (Table 4, pg. 6).
7. An overall three year post release for CY 2006 demonstrates that 40.1% of blacks and 36% of whites return to prison. The recidivism rates for blacks and whites dropped by 6.5% points and 2.1% points respectively, from the previous year (Table 5, pg. 9).
8. For 2006 releases and within a three-year post release and a return to prison, males within the age range of 25-34 and females within the age range of 35-44 demonstrated the highest total return rates (Table 6, pg. 10).

Administrative Services Division, Research and Planning, Arkansas Department of Correction
P.O. Box 8707, Pine Bluff, AR 71602, Telephone (870) 267-6335

Ray Hobbs, Interim Director

Sheila Sharp, Deputy Director

Arkansas' Recidivism Study (Addendum)

The 2006 recidivism research is an addendum to the original 1997-1999 study produced in 2003 and to the addendums through 2005, produced in prior years. This addendum was prepared by the Arkansas Department of Correction's Research and Planning Division. The addendum reviews the return rates of inmates released from custody in CY2006, as compared to prior years. The data for this research was obtained from the ADC electronic Offender Management Information System (eOMIS). If an individual was released **January 1, 2006** through **December 31, 2006**, the data provided reflects returns for a full three-year post release. All charts and tables reflect a three year post release review and are utilized strictly for clarity and ease to the reader.

The study is categorized into return rates of six months, one year, and three years, respectively. As with the 2005 addendum regarding a three-year post release of inmates produced in 2008, the ADC Research and Planning Section will continue to study, track and update trends in release/return rates annually.

Overall Recidivism Rates

As demonstrated, Table 1 shows the overall ADC 2006 recidivism rates. The post-release period consists of six months, one year, and three years, from 1997 through 2006. In 2006, there were a total of 5,505 inmates released from ADC (refer to Table 1, year 2006). Within six months of release, 6.4% returned to prison. Within one year of release, 17.1% returned and within three years there was an overall rate of 37.4% returned to prison. ADC has experienced an average of 47.6% average return rate for inmates released from prison, over the ten years studied.

**In all tables, the "number of releases" are the number of unduplicated releases in a given year used to generate recidivism rates. Table 1 does not specify the type of return. It demonstrates an overall return rate, regardless of reason.*

Table 1

Overall Recidivism Rates								
Release Year	Total Releases	% Returned 6 Months	# Returned 6 Months	% Returned 1 Year	# Returned 1 Year	% Returned 3 Years	# Returned 3 Years	Total % Returns
1997	4,668	15.4%	721	29.9%	1,394	49.0%	2,289	49.0%
1998	5,434	16.5%	898	31.2%	1,694	52.0%	2,825	52.0%
1999	5,330	15.6%	832	30.6%	1,629	51.4%	2,738	51.4%
2000	5,872	14.2%	834	29.0%	1,701	51.8%	3,040	51.8%
2001	5,962	15.9%	948	29.7%	1,771	51.4%	3,066	51.4%
2002	6,015	15.1%	911	28.5%	1,716	49.4%	2,969	49.4%
2003	6,135	12.9%	792	25.9%	1,586	47.4%	2,905	47.4%
2004	6,244	11.2%	698	22.1%	1,377	44.4%	2,772	44.4%
2005	5,657	7.4%	418	18.3%	1,036	41.4%	2,344	41.4%
2006	5,505	6.4%	355	17.1%	943	37.4%	2,060	37.4%
Averages	5,682	13.1%	741	26.2%	1,485	47.6%	2,701	47.6%

Recidivism Rates: Release Type

Table 2 demonstrates recidivism rate by type of release. ADC releases inmates by parole with supervision, which is granted by the Parole Board, or by discharge (max flat of sentence). In **2006**, there were **5,358** inmates released by regular parole and **147** inmates discharged. Results indicate that within six months of release in **2006**, **350** or **6.5%** of inmates released on parole had returned, while only **5** or **3.4%** of inmates discharged returned with a new sentence. Total returns of parole releases from ADC in **2006** show a **37.7%** return rate, while discharges reflect a **27.2%** return rate.

Table 2

Recidivism Rates By Type of Release								
Year	Type of Release	Total Releases	6 Mths Returns	% Returns	1 Year Returns	% Returns	3 Years Returns	% Returns
1997	Paroled - Regular	3,964	693	17.5%	1,316	33.2%	2,129	53.7%
	Discharge	692	28	4.0%	77	11.1%	204	29.5%
1998	Paroled - Regular	4,798	870	18.1%	1,557	32.5%	2,596	54.1%
	Discharge	624	27	4.3%	65	10.4%	156	25.0%
1999	Paroled - Regular	4,677	803	17.2%	1,557	33.3%	2,553	54.6%
	Discharge	643	28	4.4%	71	11.0%	184	28.6%
2000	Paroled - Regular	5,691	832	14.6%	1,691	29.7%	3,005	52.8%
	Discharge	181	2	1.1%	10	5.5%	35	19.3%
2001	Paroled - Regular	5,778	947	16.4%	1,762	30.5%	3,042	52.6%
	Discharge	184	1	0.5%	9	4.9%	24	13.0%
2002	Paroled - Regular	5,841	910	15.6%	1,707	29.2%	2,938	50.3%
	Discharge	174	1	0.6%	9	5.2%	31	17.8%
2003	Paroled - Regular	5,958	788	13.2%	1,577	26.5%	2,861	48.0%
	Discharge	177	4	2.3%	9	5.1%	43	24.3%
2004	Paroled - Regular	6,075	693	11.4%	1,368	22.5%	2,735	45.0%
	Discharge	169	5	3.0%	9	5.3%	37	21.9%
2005	Paroled - Regular	5,505	413	7.5%	1,025	18.6%	2,317	42.1%
	Discharge	152	5	3.3%	11	7.2%	27	17.8%
2006	Paroled - Regular	5,358	350	6.5%	931	17.4%	2,020	37.7%
	Discharge	147	5	3.4%	12	8.2%	40	27.2%
Total	Paroled - Regular	47,687	7,299	16.4%	12,914	29.0%	23,335	48.9%
	Total Discharged	2,966	102	3.6%	273	9.5%	738	24.9%

Recidivism Rates: (Return Types) Parolees and Discharges

Table 3 and Figures 3 and 3-1 show inmates that return to prison for parole violations with a new sentence(s); or parole violators returning with a technical violation(s); and discharges (a reconvicted inmate) that returned to prison as a recommitment with a new sentence. Since the opening of the Technical Parole Violator Program, a return to prison for a technical violation while on parole has vastly decreased the technical returns, while a parole violation with a new sentence causes the majority of returns. Even though a new conviction may also have a technical violation attached, the new conviction in most cases will supersede the technical violation making the new conviction the primary reason for return to prison. In **2006**, as reflected in Table 3 and Figure 3, within three years, **1,868** or **33.9%** of the releases return to prison as a result of a parole violation or new sentence and **192** or **3.5%** of these discharges (includes **152** inmates that discharged after being released on parole), returned as a result of a new charge.

Table 3

Recidivism Of Parolees And Discharges								
Year	Total Releases	Type of Return	6 Mths Returns	% Returns	1 Year Returns	% Returns	3 Years Returns	% Returns
1997	4,668	PV/New Sentence	179	3.8%	326	6.9%	512	10.9%
		PV/Technical	511	10.9%	976	20.9%	1,453	31.1%
		Discharge - Reconviction	31	0.7%	92	2.0%	324	7.0%
1998	5,434	PV/New Sentence	195	3.6%	378	7.0%	629	11.6%
		PV/Technical	674	12.4%	1,167	21.5%	1,854	34.1%
		Discharge - Reconviction	29	0.5%	79	1.4%	272	5.0%
1999	5,323	PV/New Sentence	217	4.1%	388	7.3%	616	11.6%
		PV/Technical	581	10.9%	1,156	21.7%	1,848	34.7%
		Discharge - Reconviction	30	0.6%	81	1.6%	309	5.9%
2000	5,872	PV/New Sentence	196	3.3%	424	7.2%	795	13.5%
		PV/Technical	633	10.8%	1,254	10.6%	2,078	14.0%
		Discharge - Reconviction	5	0.1%	23	0.4%	167	2.9%
2001	5,962	PV/New Sentence	283	4.7%	540	9.1%	913	15.3%
		PV/Technical	663	11.1%	1,211	20.3%	1,972	33.1%
		Discharge - Reconviction	2	0.0%	20	0.3%	181	3.0%
2002	6,015	PV/New Sentence	793	13.2%	1,516	25.2%	2,549	42.4%
		PV/Technical	113	1.9%	174	2.9%	215	3.6%
		Discharge - Reconviction	5	0.1%	26	0.4%	205	3.4%
2003	6,135	PV/New Sentence	785	12.8%	1,558	25.4%	2,668	43.5%
		Discharge - Reconviction	7	0.1%	28	0.5%	237	3.9%
2004	6,244	PV/New Sentence	686	11.0%	1,341	21.5%	2,535	40.6%
		Discharge - Reconviction	12	0.2%	36	0.6%	237	3.8%
2005	5,657	PV/New Sentence	407	7.2%	999	17.7%	2,120	37.5%
		Discharge - Reconviction	11	0.2%	37	0.7%	224	4.0%
2006	5,505	PV/New Sentence	346	6.3%	918	16.7%	1,868	33.9%
		Discharge - Reconviction	9	0.2%	25	.4%	192	3.5%
Total	56,815		7,403	13.0%	14,773	26.0%	26,973	47.5%

Figure 3

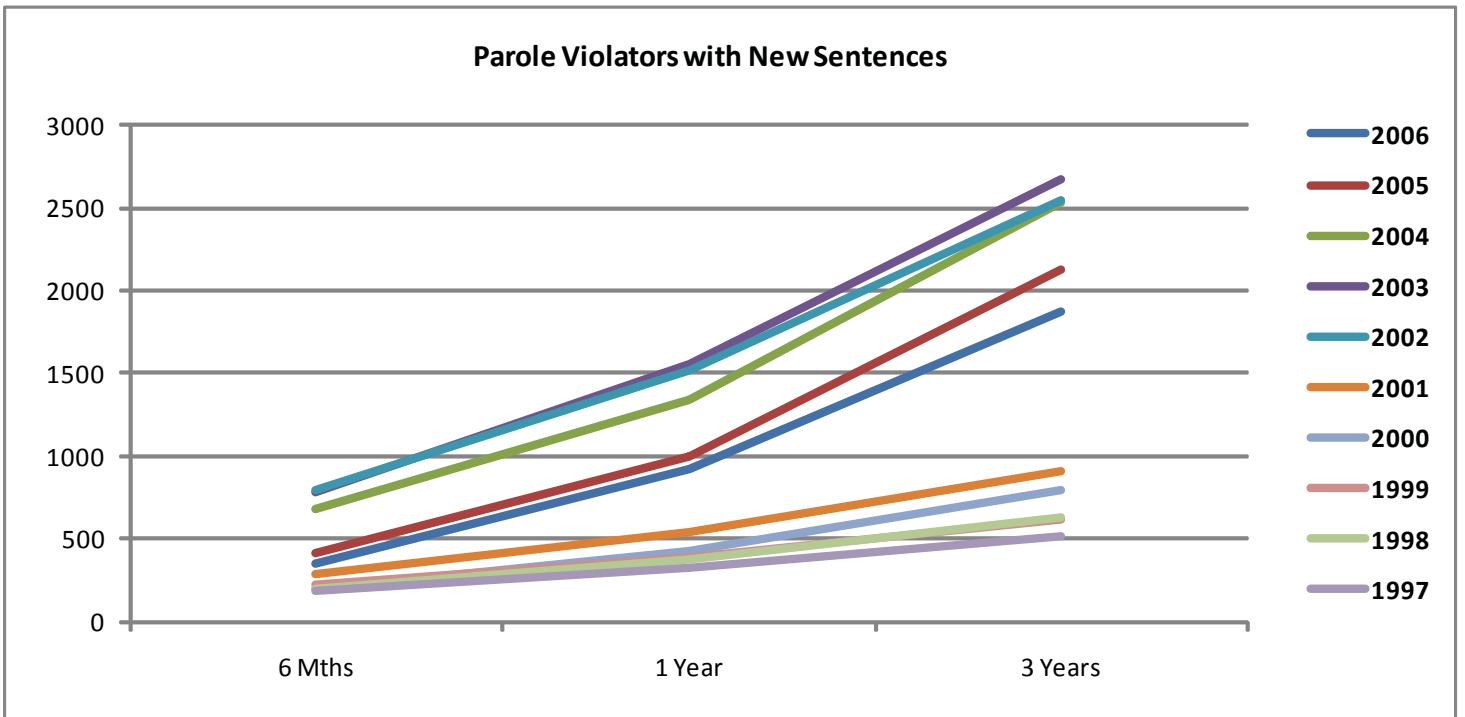
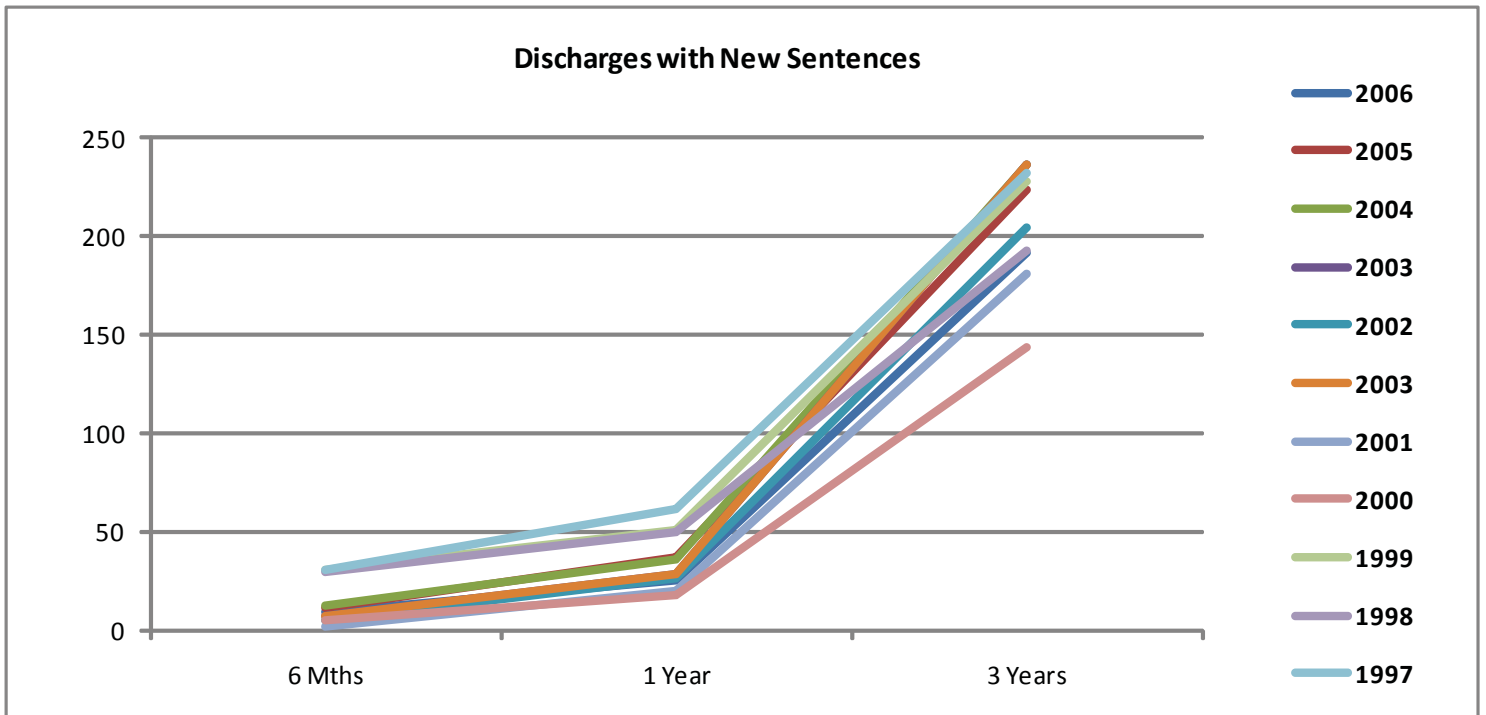


Figure 3-1



Recidivism Rates: Gender

Table 4 and Figures 4, 4-1, 4-2 exhibit recidivism rates by gender. In **2006**, males increased in return rates over the three-year post release time frame. From six months to one year, data demonstrated a fairly constant return rate for both males and females; however, by the end of the third year there was a significant increase in males returning to prison. Within each consecutive year, the overall return rate for males increased from **1997** to **2001**, while **2002** to **2005** reflects a **9.3 %** decrease in overall recidivism rates.

Table 4

Recidivism Rates By Gender									
Year	Gender	Total Releases	6 month Return	% Returns	1 Year Returns	% Returns	3 Years Returns	Total % Returns	Total Inmates Not Returning
1997	Female	439	38	8.7%	94	21.4%	162	36.9%	277
	Male	4,229	683	16.2%	1,300	30.7%	2,127	50.3%	2,102
1998	Female	512	75	14.6%	123	24.0%	227	44.3%	285
	Male	4,922	823	16.7%	1,501	30.5%	2,528	51.4%	2,394
1999	Female	545	58	10.6%	115	21.1%	206	37.8%	339
	Male	4,785	774	16.2%	1,514	31.6%	2,532	52.9%	2,253
2000	Female	652	75	11.5%	158	24.2%	264	40.5%	388
	Male	5,220	759	14.5%	1,543	29.6%	2,766	53.0%	2,454
2001	Female	625	81	13.0%	140	22.4%	260	41.6%	365
	Male	5,337	867	16.2%	1,631	30.6%	2,806	52.6%	2,531
2002	Female	594	67	11.3%	134	22.6%	242	40.7%	320
	Male	5,421	844	15.6%	1,582	29.2%	2,727	50.3%	2,426
2003	Female	616	54	8.8%	111	18.0%	215	34.9%	401
	Male	5,519	738	13.4%	1,475	26.7%	2,690	48.7%	2,829
2004	Female	551	31	5.6%	56	10.2%	139	25.2%	413
	Male	5,693	667	11.7%	1,321	23.2%	2,633	46.2%	3,060
2005	Female	534	15	2.8%	44	8.2%	123	23.0%	411
	Male	5,124	403	7.9%	992	19.4%	2,221	43.3%	2,903
2006	Female	614	18	2.9%	57	9.3%	137	22.3%	477
	Male	4,891	337	6.9%	886	18.1%	1,923	39.3%	2,968

Figure 4

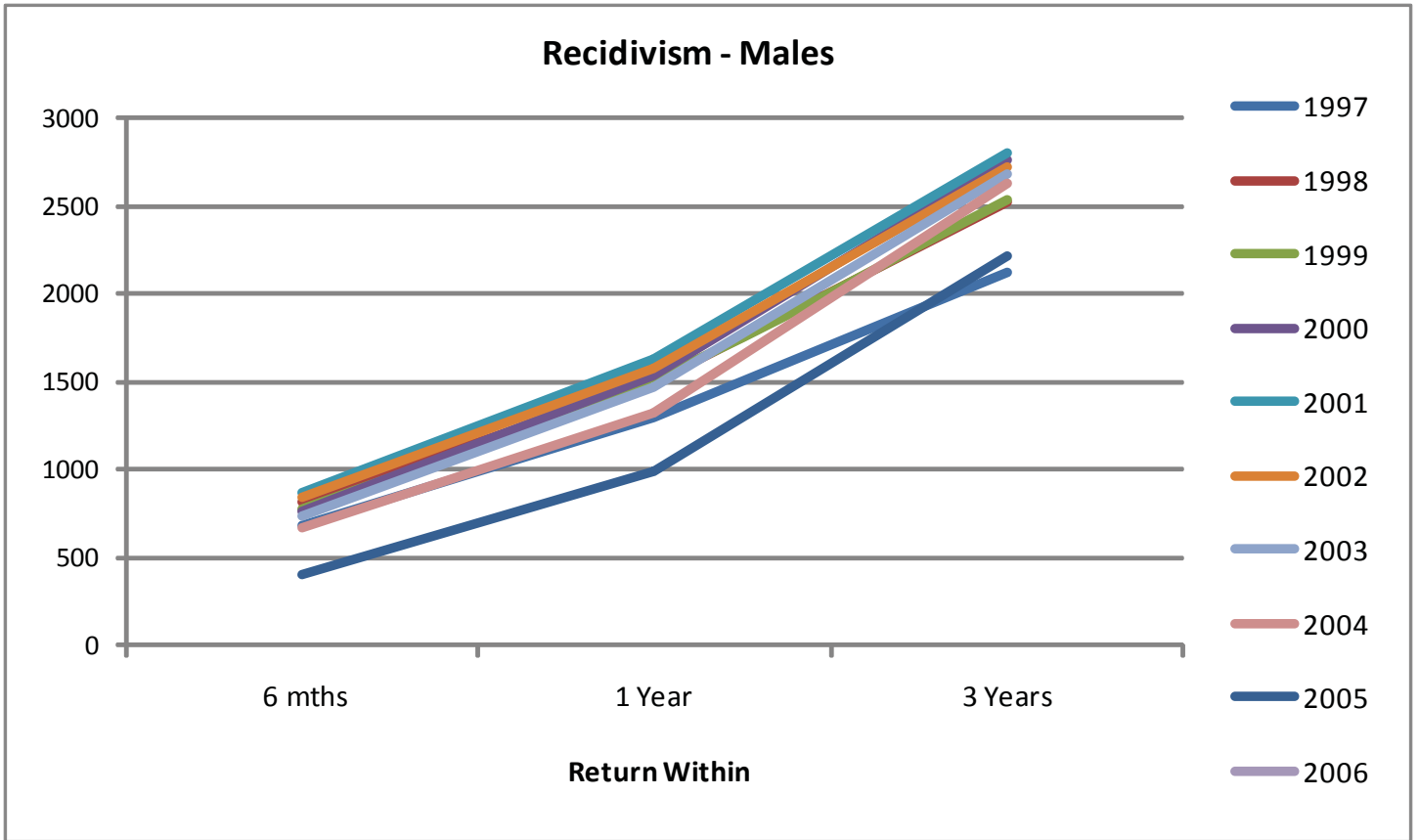


Figure 4-1

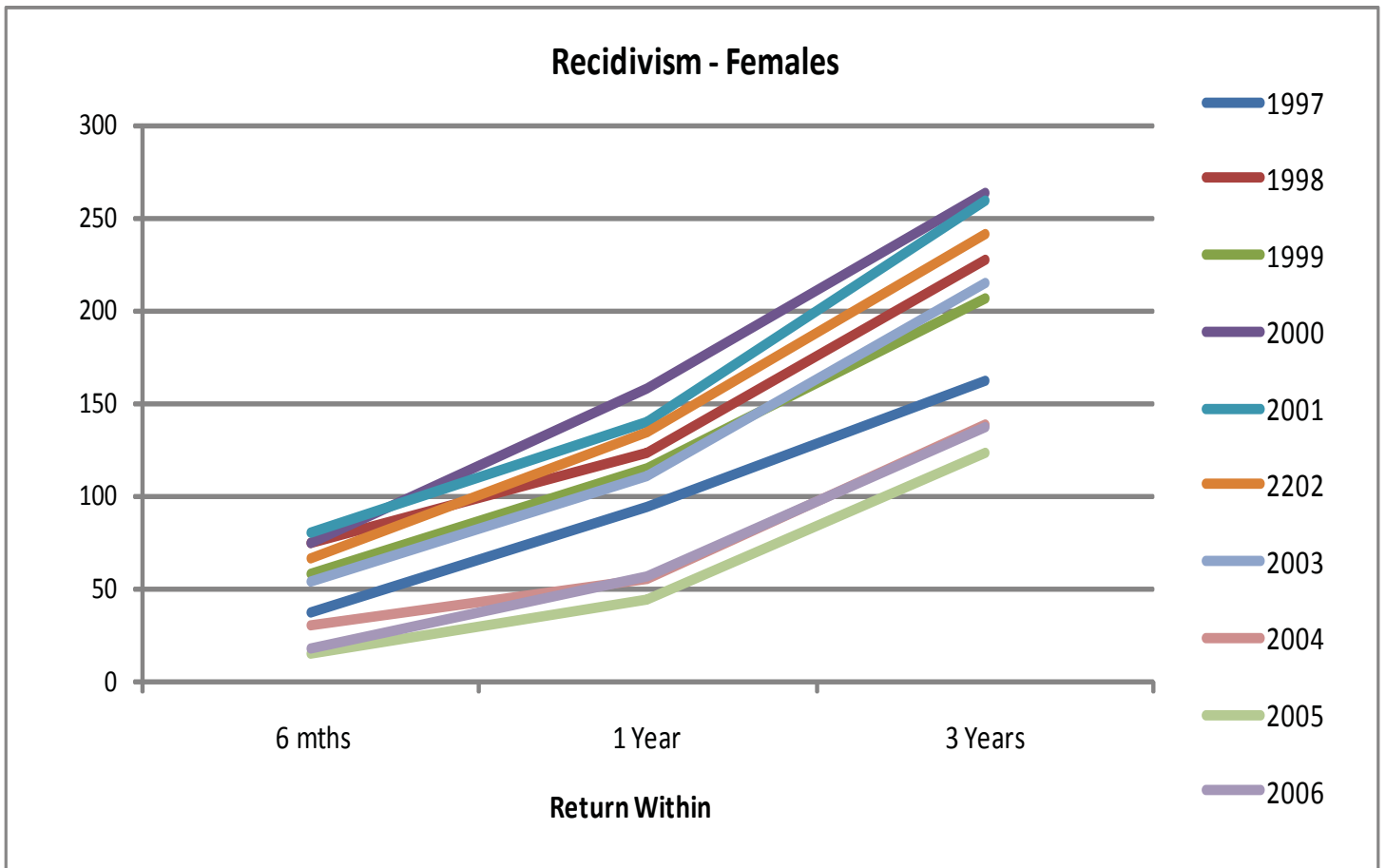
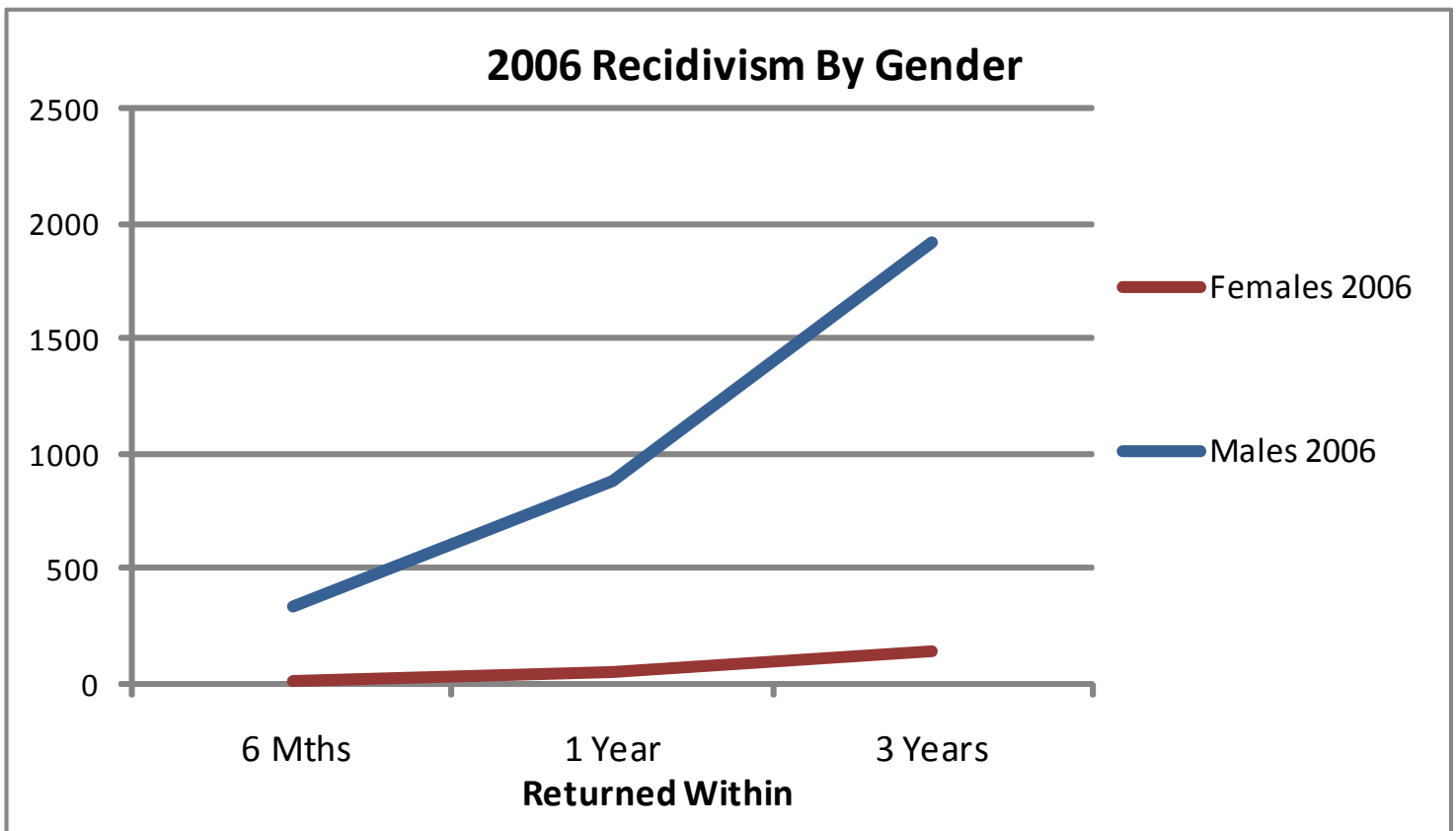


Figure 4-2



Recidivism Rates: Race

Recidivism rates were generated by race for **CY2006**, and incorporated time frames of six months, one year, and three years. Recidivism rates were based on three areas of ethnic diversity. Within the ADC, the population primarily consists of Caucasian and African-American racial designations, while only a small percentage consists of Hispanic and Other. For this report, the category of Caucasian is denoted as White, the African-American category is denoted as Black, the Hispanic category consists of Cuban and Mexican racial designations and the Other category incorporates both Asian and Native American. The **2006** recidivism addendum study incorporates Caucasian, African-American, Hispanic, and Other racial designations to demonstrate recidivism rates by race as provided in Table 5. In **2006**, **3,064** Caucasian inmates were released. Within six months, **200** or **6.5%** returned to prison. Within one year, **533** or **17.4%** returned and within three years, **1,102** or **36.0%** returned to prison. For **CY2006**, African-American inmates have a higher recidivism rate (**40.1% vs. 36.0%**) than their Caucasian counterparts (see Table 5).

Table 5

Recidivism Rates By Race								
Year	Race	Total Releases	6 Month Returns	% Returns	1 Year Returns	% Returns	3 Years Returns	% Returns
1997	Black	2,420	413	17.1%	795	32.9%	1,268	52.4%
	Hispanic	29	2	6.9%	4	13.8%	7	24.1%
	Other	16	0	0.0%	0	0.0%	2	12.5%
	White	2,202	306	13.9%	595	27.0%	1,013	46.0%
1998	Black	2,685	481	17.9%	877	32.7%	1,463	54.5%
	Hispanic	25	5	20.0%	7	28.0%	8	32.0%
	Other	18	1	5.6%	4	22.2%	9	50.0%
	White	2,706	411	15.2%	737	27.2%	1,275	47.1%
1999	Black	2,541	414	16.3%	801	31.5%	1,362	53.6%
	Hispanic	19	2	10.5%	3	15.8%	5	26.3%
	Other	13	0	0.0%	2	15.4%	3	23.1%
	White	2,757	416	15.1%	822	29.8%	1,367	49.6%
2000	Black	2,756	401	14.6%	817	29.6%	1,512	54.9%
	Hispanic	66	6	9.1%	10	15.2%	16	24.2%
	Other	62	4	6.5%	5	8.1%	9	14.5%
	White	2,988	423	14.2%	869	29.1%	1,503	50.3%
2001	Black	2,718	463	17.0%	839	30.9%	1,476	54.3%
	Hispanic	64	3	4.7%	10	15.6%	18	28.1%
	Other	45	3	6.7%	4	8.9%	8	17.8%
	White	3,135	479	15.3%	918	29.3%	1,564	49.9%
2002	Black	2,618	408	15.6%	741	28.3%	1,335	51.0%
	Hispanic	75	5	6.7%	9	12.0%	13	17.3%
	Other	30	0	0.0%	3	10.0%	7	23.3%
	White	3,292	497	15.1%	962	29.2%	1,613	49.0%
2003	Black	2,768	321	11.6%	691	25.0%	1,349	48.7%
	Hispanic	50	4	8.0%	11	22.0%	20	40.0%
	Other	13	0	0.0%	1	7.7%	5	38.5%
	White	3,304	467	14.1%	883	26.7%	1,531	46.3%
2004	Black	2,711	255	9.4%	573	21.1%	1,260	46.5%
	Hispanic	64	10	15.6%	14	21.9%	24	37.5%
	Other	19	1	5.3%	4	21.1%	5	26.3%
	White	3,450	432	12.5%	786	22.8%	1,483	43.0%
2005	Black	2,285	167	7.3%	455	19.9%	1,064	46.6%
	Hispanic	70	6	8.6%	11	15.7%	22	31.4%
	Other	30	4	13.3%	7	23.3%	10	33.3%
	White	3,273	241	7.4%	563	17.2%	1,248	38.1%
2006	Black	2,304	144	6.3%	396	17.2%	925	40.1%
	Hispanic	115	10	8.7%	12	10.4%	29	25.2%
	Other	22	1	4.5%	2	9.1%	4	18.2%
	White	3,064	200	6.5%	533	17.4%	1,102	36.0%

Recidivism Rates: Age

Age shows to be significantly related to recidivism within the ADC. An inmate's age at his/her last admission was significantly related to return to custody (See Table 6). For males, this was fairly evident when reviewing age cohorts of **25-34** as primary and **18-24** instead of **35-44** as reported last year, as secondary return age ranges. Females returning to prison also demonstrated increased returns in age ranges of **25-34** and **35-44** (See Figure 6).

Table 6

2006 Recidivism by Age (female)					
Gender	AGE	6 Months Returns	1 Year Returns	3 Years Returns	Total % Returns
Female	18 - 24	7	11	25	18.2%
	25 - 34	4	16	47	34.3%
	35 - 44	6	24	54	39.5%
	45 - 54	1	6	11	8.0%
	Total	18	57	137	100.0%

Table 6-1

2006 Recidivism by Age (male)					
Gender	AGE	6 Months Returns	1 Year Returns	3 Years Returns	Total % Returns
Male	<= 17	0	1	4	0.2%
	18 - 24	85	224	490	25.5%
	25 - 34	137	362	752	39.1%
	35 - 44	84	216	470	24.4%
	45 - 54	24	71	180	9.4%
	55 - 64	6	11	24	1.2%
	>= 65	1	1	3	0.2%
	Total	337	886	1,923	100.0%

Figure 6

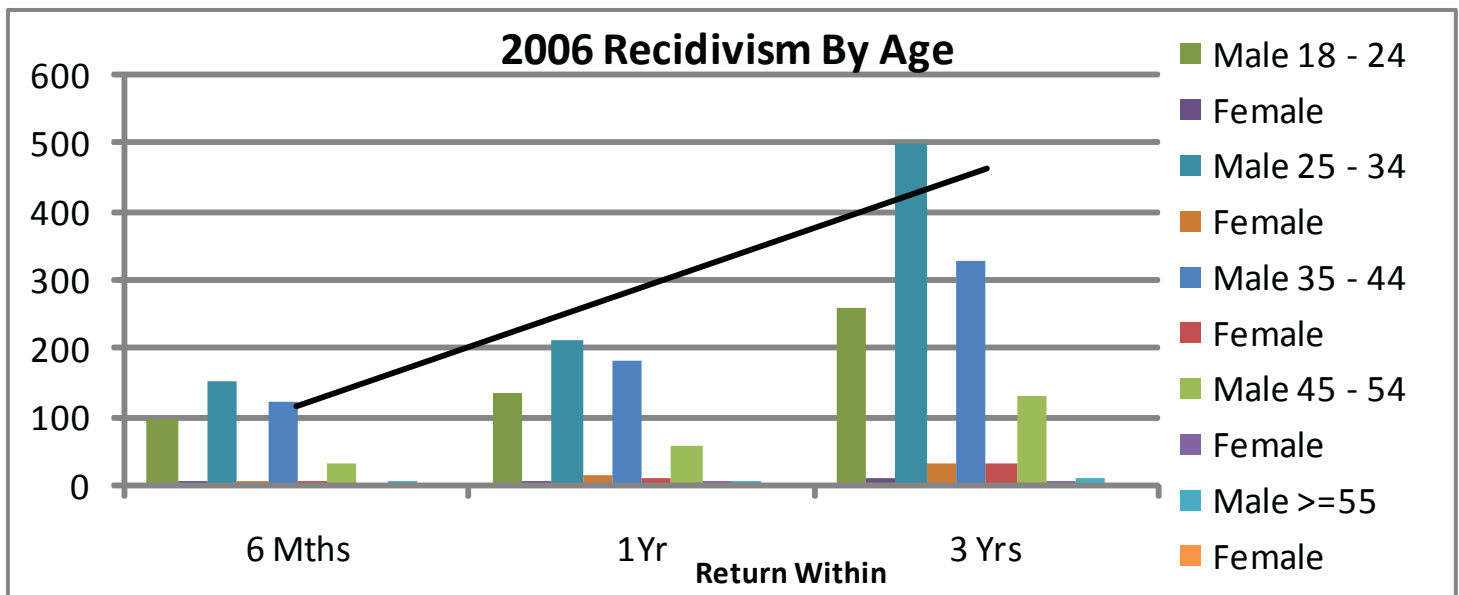


Table 7

Recidivism Rates By Offense Category			
Offense Category	No.Releases	Ret w/in 3 yrs	% Returned
0101 - Capital Murder	1	0	0.0%
0102 - Murder-1st Degree	57	13	22.8%
0103 - Murder-2nd Degree	40	19	47.5%
0104 - Manslaughter	44	17	38.6%
0105 - Negligent Homicide	9	5	55.6%
0201 - Kidnapping	24	2	8.3%
0202 - False Imprisonment-1st Degree	28	12	42.9%
0203 - Vehicular Piracy	1	1	100.0%
0301 - Robbery	390	196	50.3%
0302 - Aggravated Robbery	140	47	33.6%
0401 - Battery-1st Degree	111	39	35.1%
0402 - Battery-2nd Degree	258	117	45.3%
0403 - Aggravated Assault	173	74	42.8%
0404 - Terroristic Threatening	111	48	43.2%
0405 - Terroristic Act	25	18	72.0%
0406 - Agg.Assault on Corr Employee	1	1	100.0%
0407 - Battery 3rd Deg. (Enhanced)	2	2	100.0%
0408 - Intro Cont Subs Body/Another	1	0	0.0%
0416 - Offense Com Presence of Child	1	0	0.0%
0501 - Rape	53	14	26.4%
0502 - Carnal Abuse-1st Degree	10	4	40.0%
0503 - Carnal Abuse-2nd Degree	5	1	20.0%
0504 - Sexual Abuse-1st Degree	80	25	31.3%
0505 - Violation Of A Minor-1st Dg	4	0	0.0%
0507 - Exposing One To HIV	1	0	0.0%
0510 - Carnal Abuse-3rd Degree	15	4	26.7%
0511 - Sexual Solicitation Of A Child	1	0	0.0%
0513 - Sexual Assault	72	22	30.6%
0701 - Incest	6	2	33.3%
0702 - Domestic Battering-1st Degree	11	2	18.2%
0703 - Domestic Battering-2nd Degree	38	14	36.8%
0704 - Agg. Aslt On Family/Household	24	7	29.2%
0705 - Non-Support	26	7	26.9%
0707 - Interference With Custody	1	0	0.0%
0708 - Domestic Battering-3rd Degree	71	26	36.6%
0801 - Endanger Welfare Minor-1st Dg	4	2	50.0%
0803 - Permit Child Abuse	1	1	100.0%
0804 - Engage Child In Sex Explot	2	0	0.0%
0805 - Trans Distr Mat Depictg Child	2	0	0.0%
0809 - Solicit Money/Prop From Incomp	1	1	100.0%

Table 7 -contd.

Recidivism Rates By Offense Category			
Offense Category	No.Releases	Ret w/in 3 yrs	% Returned
0810 - Sexual Solicitation Of A Child	12	3	25.0%
0813 - Dist/Poss/View Sex Explicit	2	0	0.0%
0814 - Computer Child Pornography	3	1	33.3%
0828 - Expose Child to Chem Substance	8	1	12.5%
0830 - Sexual Indecency With A Child	6	3	50.0%
1001 - Theft Of Property	1054	492	46.7%
1002 - Theft Of Services	3	0	0.0%
1003 - Thft of Prop Lost, Mislaid, Del	1	1	100.0%
1004 - Theft By Receiving	207	94	45.4%
1005 - Theft Of Leased Property	3	1	33.3%
1006 - Theft Of Public Benefits	4	0	0.0%
1101 - Forgery	242	97	40.1%
1104 - Fraudulent Use Of Credit Card	15	2	13.3%
1113 - Hot Check Violation	94	27	28.7%
1118 - Financial Identity Fraud	1	0	0.0%
1202 - Impair Oper Of Vital Pub Facility	1	0	0.0%
1203 - Arson	21	10	47.9%
1204 - Reckless Burning	5	1	20.0%
1205 - Criminal Mischief-1st Degree	36	12	33.3%
1207 - Criminal Mischief-2nd Degree	1	0	0.0%
1301 - Burglary	11	2	18.2%
1302 - Breaking And Entering	75	29	38.7%
1303 - Residential Burglary	99	41	41.4%
1304 - Commercial Burglary	42	25	59.5%
1501 - Public Servant Bribery	1	0	0.0%
1601 - Perjury	1	0	0.0%
1603 - Intimidating A Witness	2	0	0.0%
1604 - Tampering With Physical Evid.	6	2	33.3%
1702 - Hindering Apprehension Or Proc	4	2	50.0%
1706 - Escape-2nd Degree	11	4	36.4%
1709 - Furnishing Implement For Escape	1	1	100.0%
1711 - Furnishing Prohib. Articles	15	2	13.3%
1712 - Failure To Appear	78	26	33.3%
1713 - Fleeing	44	14	31.8%
1715 - Filing A False Report	5	1	20.0%
1718 - Absconding	3	1	33.3%
1720 - Fail To Register Child/Sex Off	22	8	36.4%
2201 - Fail To Keep Records Dist Drg	78	13	16.7%
2202 - Advertise Drug Paraphernalia	485	123	25.4%
2203 - Manu/Delv/Poss Control Subs.	746	233	31.2%

Table 7 -contd.

Recidivism Rates By Offense Category			
Offense Category	No.Releases	Ret w/in 3 yrs	% Returned
2214 - Poss W/I To Manufacture	3	1	33.3%
2215 - Possession Of Ephedrine	3	1	33.3%
2301 - Viol Of Omb DWI Act 4th Offens	70	10	14.3%
2707 - Stalking	3	0	0.0%
2901 - Poss. Firearm Certain Person	25	8	32.0%
2902 - Criminal Use Prohibited Weapon	2	1	50.0%
3001 - Criminal Attempt	54	17	31.5%
3002 - Criminal Solicitation	1	0	0.0%
3003 - Criminal Conspiracy	37	7	18.9%
3600 - Video Voyeurism	1	0	0.0%
6503 - Fail To Stop Acc. W/Inj/Death	4	0	0.0%
8001 - Discharge Firearm From Vehicle	3	0	0.0%
8002 - Engage In Viol Crim Group Act	3	0	0.0%
8004 - Simul. Poss Of Drugs/Firearm	3	0	0.0%
Total	5,505	2,060	37.4%

Recidivism Rates: Offense

Table 7 reflects the return rates as a result of the type of offense, for a select period of time. A variety of offenses were analyzed in order to understand the breadth and depth of recidivism rates by offense and the return to prison within a three-year time frame. For clarity, Table 7 denotes the offense category, the actual number of releases/returns for **2006**, and the actual numbers and percent of returns within three years for each category.